



 borgo<sup>®</sup>  
Theatre Seating

+

**MAYER**FABRICS



**TWIST**  
304-026 Cloud



**SANCTUARY**  
643-007 Ivory



**NIMBLE**  
WC723-017 Cobblestone



**CONNECT**  
635-007 Latte



**SEQUOIA**  
WC738-007 Birch



**BEAUX**  
366-006 Quarry



**SANCTUARY**  
643-016 Platinum



**TWIST**  
304-016 Mushroom



**HAVEN**  
472-026 Iron



**BEAUX**  
366016 Masonry



**SEQUOIA**  
WC738-006 Ebony



**CONNECT**  
635-006 Charcoal



**NIMBLE**  
WC723-000 Obsidian



**CASPIAN**  
329-016 Cinder



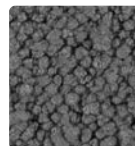
**FLECK**  
474-027 Heron



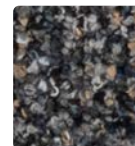
**RITZI**  
401-027 Lunar



**FLECK**  
474-016 Piano



**RITZI**  
401-026 Shale



**FLECK**  
474-036 Peppercorn



**RITZI**  
401-006 Peppercorn

**Connect and Sequoia shown at approx. 50% scale.**

Additional colors are available. Please refer to the Borgo or Mayer Fabrics website.



**HAVEN**  
472-010 Shiitake



**SANCTUARY**  
643-002 Honey



**TWIST**  
304-009 Habanero



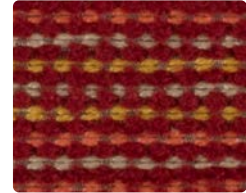
**HAVEN**  
472-011 Ruby



**CONNECT**  
635-009 Spice



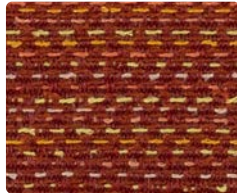
**NIMBLE**  
WC723-009 Amber



**CASPIAN**  
329-011 Sunset



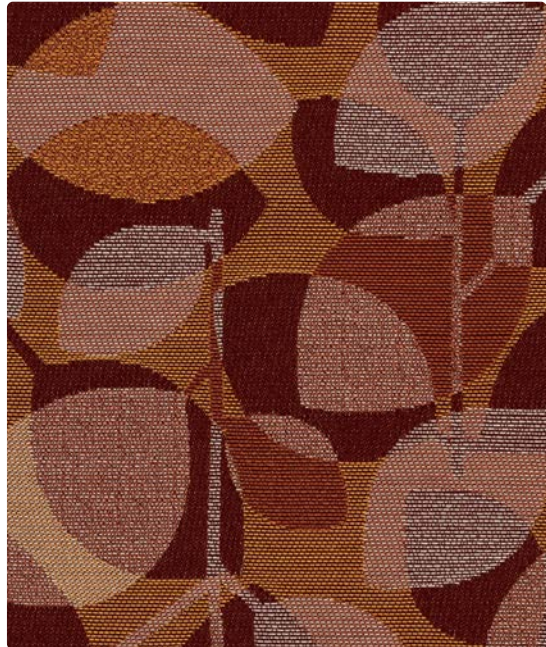
**TWIST**  
304-001 Flame



**BEAUX**  
366-019 Ablaze



**SANCTUARY**  
643-001 Rosewood



**SEQUOIA**  
WC738-009 Autumn



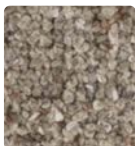
**CONNECT**  
635-005 Plum



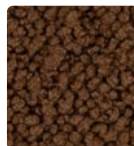
**BEAUX**  
366-005 Majestic



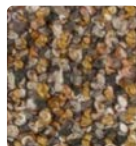
**HAVEN**  
472-005 Eggplant



**FLECK**  
474-017 Dune



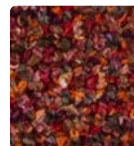
**RITZI**  
401-020 Coffee



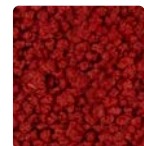
**FLECK**  
474-012 Umber



**RITZI**  
401-002 Amber



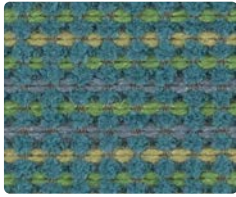
**FLECK**  
474-001 Flare



**RITZI**  
401-001 Scarlet

**Connect and Sequoia shown at approx. 50% scale.**

Additional colors are available. Please refer to the Borgo or Mayer Fabrics website.



**CASPIAN**  
329-013 Jungle



**TWIST**  
304-003 Fern



**SEQUOIA**  
WC738-003 Bamboo



**SANCTUARY**  
643-003 Palmetto



**CONNECT**  
635-013 Meadow



**BEAUX**  
366-014 Tidal



**HAVEN**  
472-033 Peacock



**NIMBLE**  
WC723-013 Jade



**SANCTUARY**  
643-004 Atlantis



**TWIST**  
304-004 Inkwell



**SEQUOIA**  
WC738-014 Indigo



**CONNECT**  
635-004 Cobalt



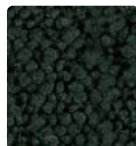
**CASPIAN**  
329-004 Ink



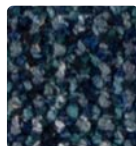
**HAVEN**  
472-044 Navy



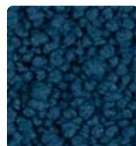
**FLECK**  
474-003 Mallard



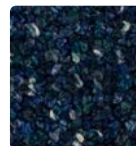
**RITZI**  
401-033 Emerald



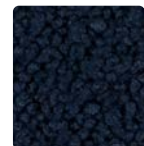
**FLECK**  
474-024 Tidal



**RITZI**  
401-014 Ocean



**FLECK**  
474-044 Midnight



**RITZI**  
401-004 Naval

**Connect and Sequoia shown at approx. 50% scale.**

Additional colors are available. Please refer to the Borgo or Mayer Fabrics website.

# TECHNICAL INFORMATION

| Pattern 54"                     | Content and Backing  | Certifications  | Weight/<br>Linear Yd. | Pattern<br>Repeat    | Finish                          | Abrasion<br>Wyzenbeek               | Light-<br>Fastness | Flammability                           | Cleaning<br>Code |
|---------------------------------|--|-----------------|-----------------------|----------------------|---------------------------------|-------------------------------------|--------------------|--|------------------|
| BEAUX<br><i>Directional</i>     | 100% Post-Consumer Recycled Polyester<br>Backing: Acrylic  | GREENGUARD Gold | 10.86oz.              | .188" H,<br>1.813" V | Stain Repellent -<br>PFAS Free  | 100,000 <sup>^</sup><br>Double Rubs | 40 hours           | Cal. 117-2013<br>NFPA 260/UFAC Class 1 | WS, BC           |
| CASPIAN<br><i>Directional</i>   | 76% Polyester,<br>24% SEAQUAL® YARN (Post-Con-<br>sumer Recycled Polyester)<br>Backing: Acrylic    | GREENGUARD Gold | 17.89 oz.             | .125" H,<br>2.5" V   | Stain Repellent -<br>PFAS Free  | 80,000 <sup>^</sup><br>Double Rubs  | 40 hours           | Cal. 117-2013<br>NFPA 260/UFAC Class 1 | WS, BC           |
| CONNECT<br><i>Directional</i>   | 100% Post-Consumer Recycled Polyester<br>Backing: Acrylic  | GREENGUARD Gold | 18.848 oz.            | 7.25" H,<br>10.75" V | Stain Repellent -<br>PFAS Free  | 100,000 <sup>^</sup><br>Double Rubs | 40 hours           | Cal. 117-2013<br>NFPA 260/UFAC Class 1 | WS, BC           |
| FLECK                           | 94% Polyester, 4% TPU,<br>2% Silicone<br>Backing: Fluid Barrier (Supreen)<br>Polyurethane          | GREENGUARD Gold | 19.7 oz.              | None                 | Supreen (Silicone)<br>PFAS Free | 100,000 <sup>^</sup><br>Double Rubs | 40 hours           | Cal. 117-2013<br>NFPA 260/UFAC Class 1 | WS, BC           |
| HAVEN<br><i>Directional</i>     | 92% Polyester, 6% Polyurethane,<br>2% Silicone<br>Backing: Fluid Barrier (Supreen)<br>Polyurethane | GREENGUARD Gold | 22 oz.                | Non-<br>Matching     | Supreen (Silicone)<br>PFAS Free | 100,000 <sup>^</sup><br>Double Rubs | 40 hours           | Cal. 117-2013<br>NFPA 260/UFAC Class 1 | WS, BC           |
| NIMBLE<br><i>Directional</i>    | 97% Polyester, 3% Viscose<br>Backing: Crypton® Moisture<br>Barrier                                 | GREENGUARD Gold | 18.33 oz.             | None                 | Crypton®                        | 100,000 <sup>^</sup><br>Double Rubs | 40 hours           | Cal. 117-2013<br>NFPA 260/UFAC Class 1 | W, C,<br>BC      |
| RITZI                           | 94% Polyester, 4% TPU,<br>2% Silicone<br>Backing: Fluid Barrier (Supreen)<br>Polyurethane          | GREENGUARD Gold | 18 oz.                | None                 | Supreen (Silicone)<br>PFAS Free | 100,000 <sup>^</sup><br>Double Rubs | 40 hours           | Cal. 117-2013<br>NFPA 260/UFAC Class 1 | WS, BC           |
| SANCTUARY<br><i>Directional</i> | 100% Polyester<br>Backing: Acrylic   | GREENGUARD Gold | 20.19 oz.             | Random<br>Match      | Nanotex® by Crypton®            | 100,000 <sup>^</sup><br>Double Rubs | 40 hours           | Cal. 117-2013<br>NFPA 260/UFAC Class 1 | W, C, BC         |
| SEQUOIA<br><i>Directional</i>   | 100% Polyester<br>Backing: Crypton® Moisture<br>Barrier  | GREENGUARD Gold | 16.08 oz.             | 14" H,<br>21.25" V   | Crypton®                        | 100,000 <sup>^</sup><br>Double Rubs | 40 hours           | Cal. 117-2013<br>NFPA 260/UFAC Class 1 | W, C,<br>BC      |
| TWIST<br><i>Directional</i>     | 70% Post-Consumer Recycled Polyester,<br>30% Polyester<br>Backing: Acrylic                         | GREENGUARD Gold | 23 oz.                | None                 | None                            | 100,000 <sup>^</sup><br>Double Rubs | 40 hours           | Cal. 117-2013<br>NFPA 260/UFAC Class 1 | WS, BC           |

## REDUCED ENVIRONMENTAL IMPACT

These products are GREENGUARD Gold Certified for low chemical and particle emissions to UL standard UL 2818 and may contribute to LEED certification.

## CARE AND CLEANING INFORMATION

W: Water-Based Cleaner    WS: Water/Solvent Cleaner    C: Crypton Cleaning

BC: Bleach Cleanable – 1 part bleach, 9 parts water = 10% bleach, 90% water solution. **Do not clean/disinfect fabric for longer than 10 minutes using the 10% bleach solution. Always rinse promptly with clean water after applying the bleach solution. Failure to do so will void any and all warranties.**

## DYE TRANSFER DISCLAIMER

Certain clothing and accessory dyes (such as those used on denim jeans) may migrate to lighter colors. This phenomenon is increased by humidity and temperature and is irreversible. Mayer Fabrics will not assume responsibility for dye transfer caused by external contaminants. Please check compatibility when using this product in combination with painted or varnished surfaces.

## ADDITIONAL INFORMATION

<sup>^</sup>Abrasion test results exceeding ACT Performance Guidelines are not an indicator of product lifespan. Multiple factors affect fabric durability and appearance retention.

Warranty: Please refer to the Mayer website for warranty information by pattern.

Custom Colors: All patterns can be custom colored. Minimum yardage applies.

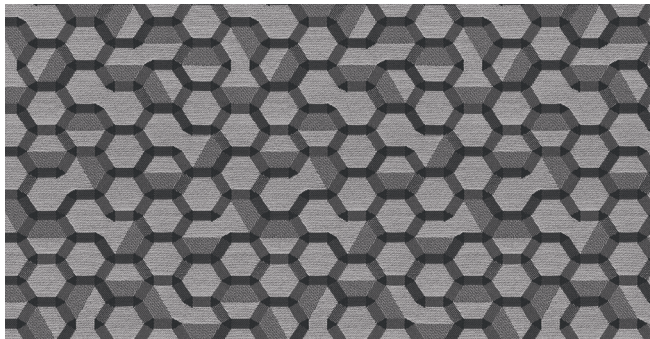
Digital Swatch Card Color Matching: Due to color variations on different monitors and color printers, actual swatch colors may vary slightly. Please request a memo sample from Mayer Fabrics to ensure proper color representation.

Complete and current product information available at [mayerfabrics.com](http://mayerfabrics.com).



These fabrics meet or exceed these ACT performance guidelines.  
\*Certification Marks owned by ACT®

©2025  
BTHEATERCD MP1125



CONNECT



SEQUOIA



# MAYER FABRICS

T 800.428.4415    [mayerfabrics.com](http://mayerfabrics.com)  
500 S. Kitley Ave. Indianapolis, IN 46219