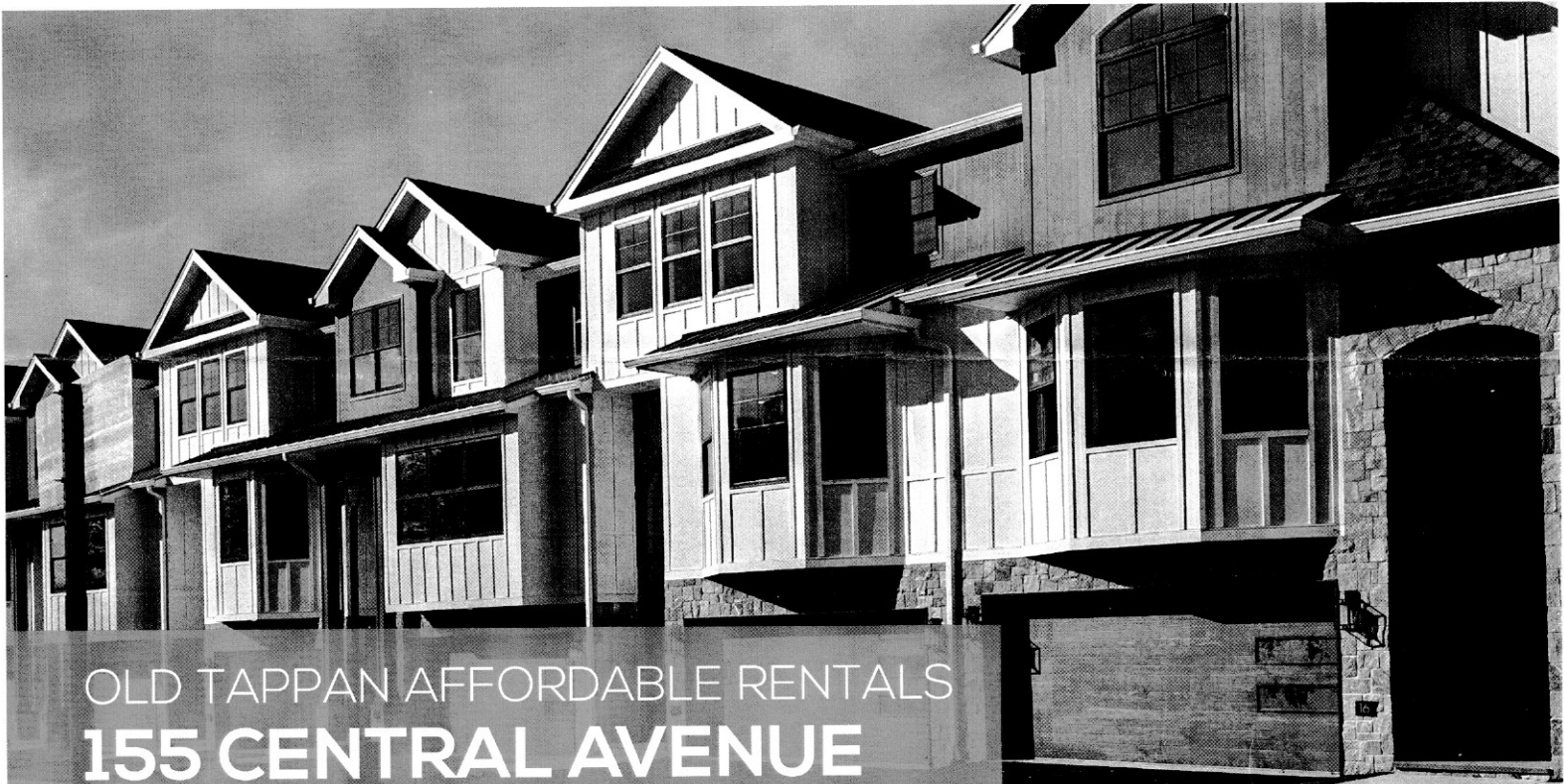


AFFORDABLE HOUSING UNITS AVAILABLE



OLD TAPPAN AFFORDABLE RENTALS
155 CENTRAL AVENUE

3

3BR

2

2BR

1

1BR

townhouses for income qualified individuals and families.

Amenities include laundry facilities, doorbell cameras, and garage parking. Two units are wheelchair accessible.

Applicants must be income eligible as follows: The minimum income for a one-bedroom (very low income) unit is \$27,093. The maximum income for a three-bedroom (moderate income) unit is \$100,183. Monthly rents will range from \$963 to \$2,689 based on family size and income level. Tenants will pay electric, gas and water.

You may **REQUEST AN APPLICATION** by contacting the Madeline Corporation office at 201-944-3222.

Completed applications along with a \$25 application fee must be received by **Friday, February 2, 2024.**