

# ST. LUKE'S EPISCOPAL SCHOOL UPPER SCHOOL

**St. Luke's**  
EPISCOPAL SCHOOL

**Girls, Grades 6 - 12**

Shop In-Store or Online  
April 28 - May 4  
and Receive 10% O

**Must be worn on chapel day**



4 - 16      \$29.50  
Adult      \$32.50

White Oxford with Logo  
**#55E26**

**#5515  
MONO**

Can wear L/S Oxford #5415

**6th - 8th: White  
9th - 12th: Black**



Pique or Performance  
Polo with Logo

**#57E12 / #57E28**

**Pique #5738**

Youth      \$25.50  
Adult      \$28.50

**Performance #5728**

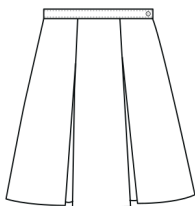
Youth      \$30.50  
Adult      \$33.50

**MONO**

Can wear L/S Pique Polo #5639

**Hem lengths are to be no more than 3" from the top of the knee cap.  
Zoghby's does not alter 148s**

134 Skirt,  
Plaid 70

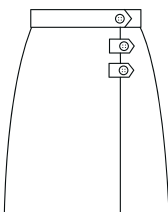


**#3953**

4 - 16      \$46.50  
7H - 28H      \$49.50

148 Skort  
Plaid 70

**DO NOT ALTER**

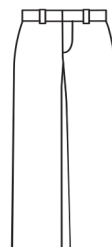


**#3929**

4 - 16      \$49.50  
7H - 28H      \$52.50



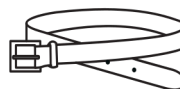
**Pants must be worn with white oxford OR  
White UNIFORM polo and a black belt.**



**Black Twill Pants**

4-16      \$31.50  
Half Size      \$33.50  
Junior      \$36.50

**#4035**



**Black Plain or  
Braided Belt**

Plain      \$17.50  
Braided      \$20.50

**Black & Grey Suede  
Saddle Oxford**



Youth      \$99.00  
Adult      \$100.00

**Predominately  
Black Tennis Shoe,  
No Converse Allowed  
Only accent color  
allowed is White**



**Not Sold at Zoghby's**

**Black Blazer with Patch**



**LADIES: #2000  
GIRLS: #4000  
ALT**

Girls      \$85.50  
Ladies      \$95.50  
Patch      \$6.00  
Sew on Patch      \$5.00

Patch free with purchase of blazer

**White or Black  
Ankle Socks  
(Logo Optional on White,  
No Logo on Black)**

3-Pack Plain      \$10.95  
3-Pack Logo      \$17.95

**Black Leggings  
(Jefferies Brand)**



**\$11.50**

# ST. LUKE'S EPISCOPAL SCHOOL UPPER SCHOOL

**St. Luke's**  
EPISCOPAL SCHOOL

**Boys, Grades 6 - 12**

Shop In-Store or Online  
April 28 - May 4  
and Receive 10% O

**Must be worn with blazer**



4 - 20 \$29.50  
Adult \$32.50

White Oxford with Logo  
**#51E26**

**#5115  
MONO**

Can wear L/S Oxford #5015

**6th - 8th: White**

**9th - 12th: Black**



**Pique #5738**

Youth \$25.50

Adult \$28.50

**Performance #5728**

Youth \$30.50

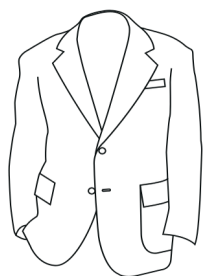
Adult \$33.50

Pique or Performance  
Polo with Logo

**#57E12 / #57E28**

**MONO**

Can wear L/S Pique Polo #5639

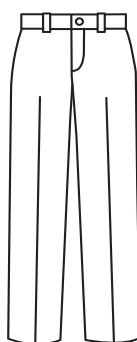


Boys \$85.50  
Mens \$95.50  
Patch \$6.00  
Sew on Patch \$5.00

Patch free with purchase of blazer

Black Blazer with Patch

**MENS: #1000  
BOYS: #3000  
ALT**



Grey Performance Pants  
**Performance material is required**

4-16 \$37.50

Husky \$40.50

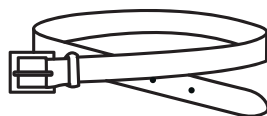
Mens \$43.50

**#1348**

Black Plain or  
Braided Belt

Plain \$17.50

Braided \$20.50



Red & Black Stripe  
Clip-On, Self, or Bow Tie

All Styles \$18.50



**COLOR:  
1303**

Black Loafer



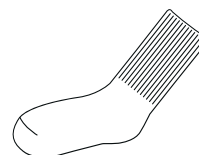
Youth \$76.00

Adult \$94.50

"Black athletic/tennis shoe (the only accent color allowed is white). Converse are not allowed.\*\*



Black or White  
Crew Socks



3-Pack \$10.95

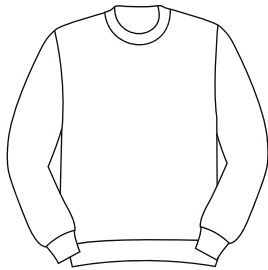
**Not Sold at Zoghby's**

# ST. LUKE'S EPISCOPAL SCHOOL UPPER SCHOOL

**St. Luke's**  
EPISCOPAL SCHOOL

## Outerwear, Grades 6 - 12

Shop In-Store or Online  
April 28 - May 4  
and Receive 10% O



Youth \$30.50  
Adult \$35.50



Black Sweatshirt  
with Logo

**#1500  
MONO**

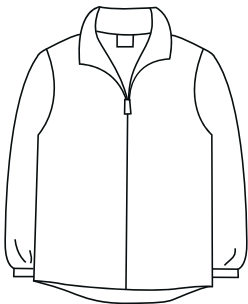


Youth \$41.50  
Adult \$44.50



Black Pullover  
with Logo

**#1110  
MONO**

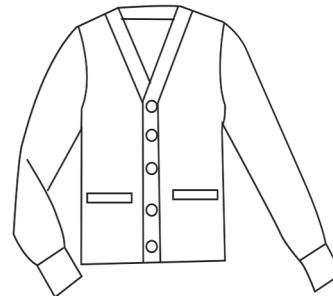


Youth \$46.50  
Adult \$49.50



Black Full-Zip Fleece  
with Logo

**#1001  
MONO**

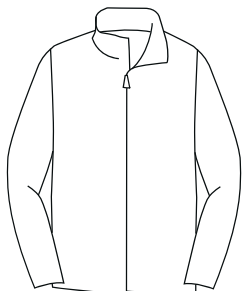


Youth \$41.50  
Adult \$44.50



Black V-Neck Cardigan  
with Logo

**#1100  
MONO**



Youth \$46.50  
Adult \$49.50



Black Soft-Shell Jacket  
with Logo

**#317  
MONO**



Youth \$36.50  
Adult \$40.50



Black Sweater Vest  
with Logo

**#1111  
MONO**