



JAPONICA CAMPUS

Announcements



JAPONICA CAMPUS DESIGNATED SPIRIT WEAR DAYS

On designated days, students in K2-5th grade may wear "spirit wear." Spirit wear consists of a St. Luke's t-shirt or sweatshirt, fingertip-length shorts or pants, St. Luke's cheer uniform, or St. Luke's athletic jersey.

Athletic shorts, cutoff shorts, rips/holes are not allowed. Athletic tennis shoes must be closed-toe without wheels or lights and can be red, grey, white or black.



- February 6 - Wear Blue Day in support of the John Wesley Holt Legacy Race \$3 ([more information below](#))
- March 17 - St. Patrick's Day - Green holiday clothing or Spirit Wear
- April 3 - Good Friday 1/2 Day - Holiday or Spirit Wear
- May 1 - Spring Fest - Red & Black/Spirit Wear
- May 18-21 - Spirit Wear Week (in conjunction with the Used Uniform Sale)

FRIDAY, FEBRUARY 6

**WEAR A
BLUE SHIRT**

On Friday, February 6, St. Luke's students may bring \$3 and wear a blue shirt or a JWH Legacy 5k t-shirt in support of the John Wesley Holt Legacy Race.

Japonica Campus: Jeans, slacks, jean shorts, or chino shorts are acceptable.

No athletic shorts or leggings. Please turn in money to your teacher.

University Campus: Wear your designated shirt with jeans.

Please turn money in at Student Services.

***The proceeds will support the John Wesley Holt Foundation.*

BRING \$3

To register, visit

<https://runsignup.com/Race/AL/Mobile/JohnWesleyHoltLegacyRace>

JAPONICA CAMPUS- WEAR BLUE DAY(S): FEBRUARY 6

On Friday, February 6, students in grades K2-5th may bring \$3 each date and wear a blue shirt or a JWH Legacy 5K t-shirt.

You may wear your shirt with jeans, slacks, jean shorts, or chino shorts.

No athletic shorts or leggings.

Please turn in the money to your teacher.

***The proceeds support the John Wesley Holt Foundation.

If you have any questions, please email pcummings@slesmobile.org.



JAPONICA CAMPUS

Announcements



JAPONICA CAMPUS GRANDPARENTS DAY - FEBRUARY 13

We are excited to welcome grandparents and grandfriends to the Japonica Campus for one of our favorite traditions—Grandparents Day—on **Friday, February 13, 2026**, from 8:30–10:30 a.m. to enjoy the Grandparents Reception, musical presentations, Mardi Gras Parade, and classroom visits!

We look forward to sharing this meaningful day with our extended St. Luke's family!



JAPONICA LOST & FOUND NOTICE

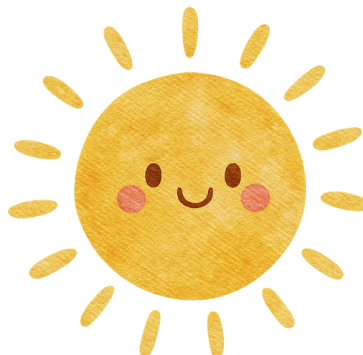
Lost-and-found items will be displayed in the Dining Hall beginning Thursday afternoon, **February 12**, and will remain available through Grandparents Day on **February 13**. Families are encouraged to check for any missing belongings during this time.

Any unclaimed uniform items will be added to the school-wide used uniform sale at the end of the year. Non-school-related items will be donated to Goodwill on the afternoon of February 13.

CAMP WILDCAT 2026

Camp Wildcat packets will be sent out on February 9. To qualify for camp, you have to be enrolled at St. Luke's for next school year.

If you have any questions, please email kchampagne@slesmobile.org.





JAPONICA CAMPUS

Announcements



St. Luke's Science Camp with Mr. Mutchnick

For Rising 5, 6, 7, and 8th grades

\$197 (includes supplies and fees)

June 8-12 8:00 a.m. until noon

3975 Japonica Lane

251-604-9724 or email gmutchnick@aol.com

Students will explore a wide range of scientific disciplines through hands-on discovery—conducting experiments, creating a real sonic boom, investigating the effects of light, and diving into space science by following the Voyager 1 and Voyager 2 missions. They'll learn about electricity by generating up to 50,000 volts with a Van de Graaff Generator, then apply their knowledge by soldering and building a working circuit board—and so much more.

St. Luke's Engineering Camp with Mr. Mutchnick

For Rising 5, 6, ,7 and 8th grades

\$197 (includes supplies and fees)

June 15-19 8:00 a.m. until noon

3975 Japonica Lane

Students will study, design, build, and test—through friendly competitions—cars, floating cars, hot air balloons, airplanes, and boats. Along the way, they'll explore aeronautical engineering and learn about NASA. Students will design, build, and launch straw rockets while studying solid rocket propulsion, test their engines, and, at the end of the week, construct real rockets capable of soaring up to 1,000 feet in the air. Parents are invited to attend the launch!



JAPONICA CAMPUS

Important Dates



February

February 2-12	Re-Enrollment Days
February 6	Wear Blue Shirt (\$3) in Support of the John Wesley Holt Legacy Race (<i>information on page 1</i>)
February 7	John Wesley Holt Legacy Race
February 8	Heron Lakes Parade 2:00 p.m.
February 11	Bigs/Littles 8:20 - 9:50 a.m. University Campus STEM+M Center
February 12	Japonica Campus Valentine's Day Parties
February 13	Grandparents Day & Mardi Gras Parade 8:30 - 10:30 a.m. K2-K3 Dismiss at 11:00 a.m. K4-5 th Dismiss at 11:30 a.m. Booster Club Heart Pizza Fundraiser
February 16-20	Mardi Gras Holidays

March

March 5	Read Across America Book Character Day Parade
March 6	Casino Night @ The Locale 7:00 - 10:30 p.m.
March 13	3 rd Quarter Ends
March 17	Japonica Campus Spirit Day: Wear Green Holiday Clothing or Spirit Wear
March 27-28	Spongebob The Musical Youth Edition 6:30 p.m.
March 29	Spongebob The Musical Youth Edition 3:30 p.m.

Click [HERE](#) for the link to the Japonica Campus website page

[Click here for the Master School Calendar](#)