

Hurricanes “Katrina” and “Rita”:

The Case for Coordinated Regional Hospital Response

Knox Address, RN

For LA ESF8 – “Lunch & Learn”; 7/2/2025

Outline:

1. Hurricane impact overview
2. Louisiana Hospital Organization
3. Louisiana Region 7 Response
4. Lessons Learned

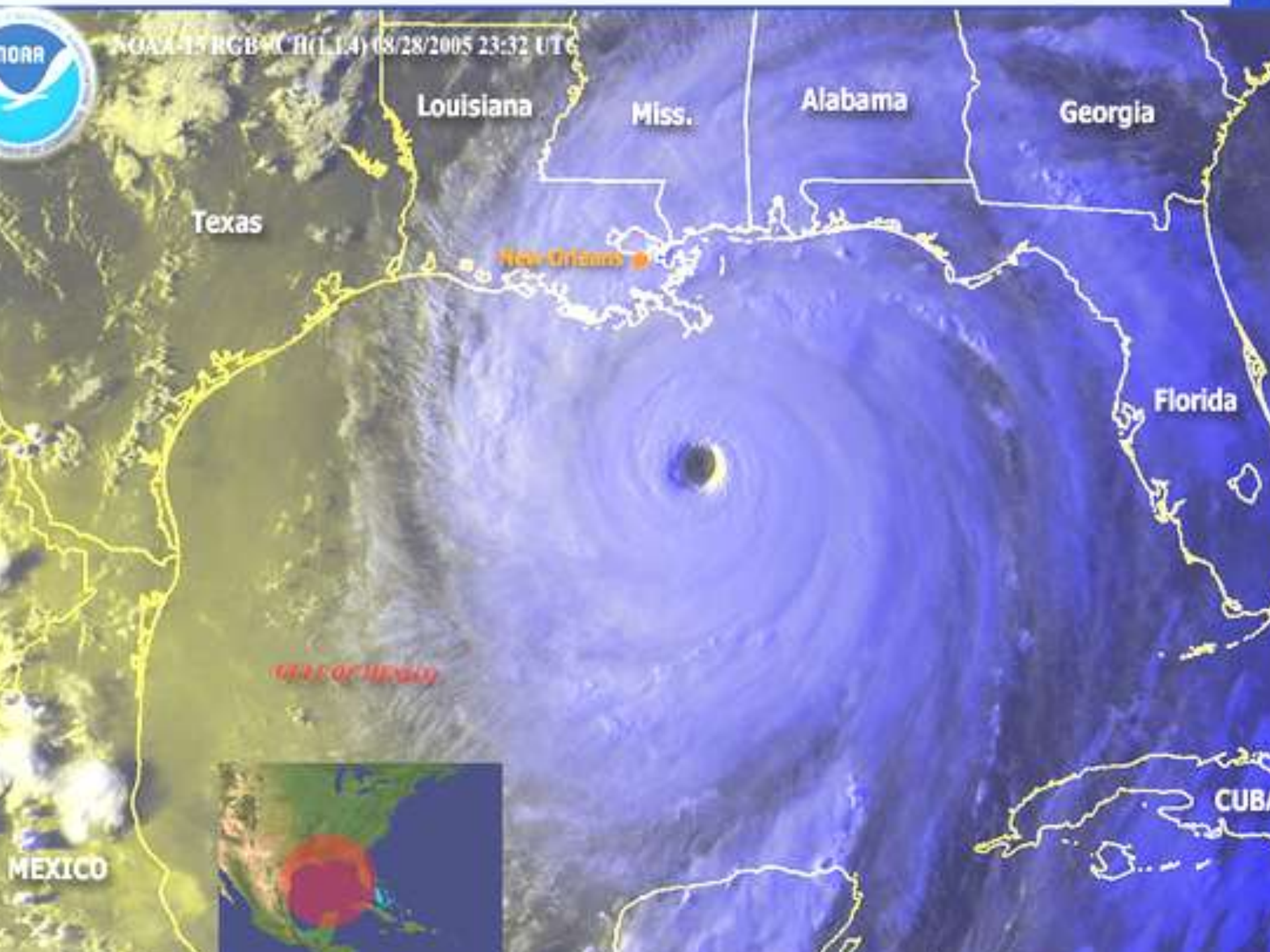


“Katrina” Impact

- Landfall – August 29, 2005;
- Winds - 140mph
- Storm surge - 4 – 32 feet
- Area impacted - 108,456 miles
- Casualties – 1292 Dead / 1265 Missing
- Homeless - 288,700 (LA)
- Job losses - 400,000+ (LA)
- Damage estimates - \$22 Billion (LA)



NOAA-15 RGB-CH(L14) 08/28/2005 23:32 UTC



Louisiana

Miss.

Alabama

Georgia

Texas

New Orleans

Florida

GULF OF MEXICO

CUBA

MEXICO



Methodist Hospital

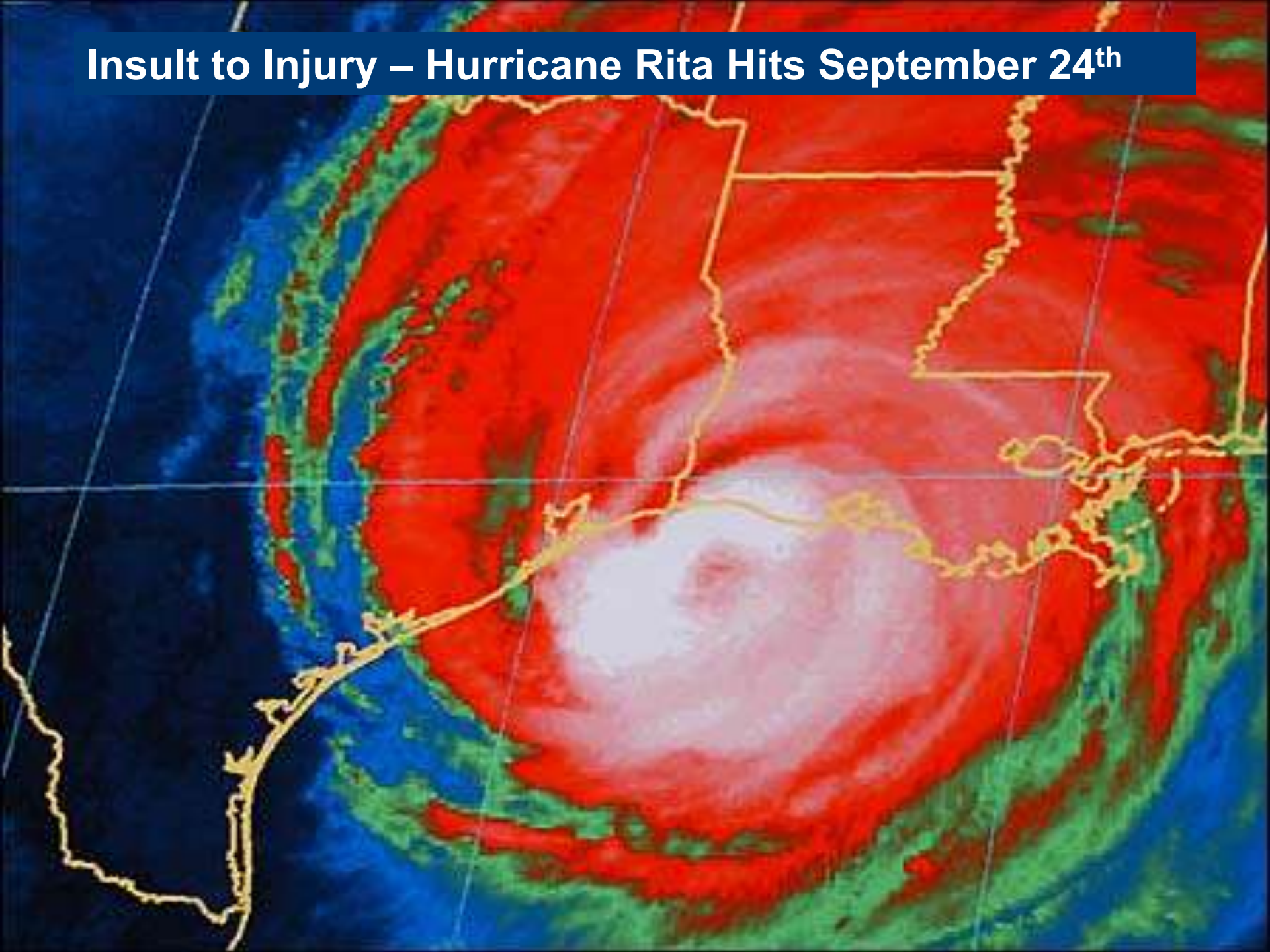


UNIVERSITY
HOSPITAL

PEDIATRIC
EMERGENCY

Operation
FREE

Insult to Injury – Hurricane Rita Hits September 24th



Hurricane Rita
September 22, 2005
4 PM CDT Thursday
 NWS TPC/National Hurricane Center
 Advisory 21

Current Center Location 25.8 N 89.5 W
 Max Sustained Wind 145 mph
 Current Movement WNW at 9 mph

- Current Center Location
- Forecast Center Positions
- H Sustained wind > 73 mph
- S Sustained wind 39-73 mph
- D Sustained wind < 39 mph
- Potential Day 1-3 Track Area
- Potential Day 4-5 Track Area
- Hurricane Warning
- Tropical Storm Warning
- Tropical Storm Watch



“Rita” Impact

- Landfall - September 23, 2005
- Winds - 120mph (Category 3)
- Storm surge - 4 – 16 feet
- Area impacted - 85,729 miles
- Casualties – 0 Dead / 0 Missing
- Homeless - 76,500 (LA)
- Job losses - 45,000+ (LA)
- Damage estimates - \$2.4 Billion (LA)

Louisiana Hospital Impact

- Hurricane "Katrina" – directly impacted 88 Critical and Non-Critical Care Facilities
- Hurricane "Rita" – directly impacted 53 Critical and Non-Critical Care Facilities

(includes Acute, Critical Access, Limited Services, and Specialty Hospitals)

So...how are hospital needs/issues reported and coordinated?

- Communications
- Continued Medical care
- Transportation
- Staffing
- Pharmaceuticals and Supplies
- Security
- Coordination
- And others

HRSA Grant Partners



Dr. Jimmy Guidry

Dr. Rosanne Prats, MHA



Dr. Michael Butler, MHA

Dr. Jim Aiken, MHA

Dr. Thomas Arnold, FAAEM, ACMT



Erin Downey, MPH

Marcia Fries

Asha Green, MPH

HRSA Hospital Infrastructure

- **Designated Regional Coordinators (DRC):** Designated individuals, in each region, who coordinate emergency response information and efforts.
- **Designated Regional Hospitals (DRH):** Designated hospitals, in each region, that serve to provide capacity and resources in the initial emergency response of a mass casualty or event.
- **Tier 1 and Tier 2 Hospitals:** Generally defined as having Acute Care (Tier 1) and Non-Acute Care (Tier 2) capabilities.

DRC's

DESIGNATED REGIONAL COORDINATORS

REGION	COORDINATOR	FACILITY	RADIO ID	OFFICE	HOME	CELL	PAGER	FAX	E-MAIL
1	Rex Oxner	VA Medical Center	HRSA						r@med.va.gov
1	Cynthia Matherne	Bywater Hospital	HRSA						p@peoplepc.com
1	Norris Yarbrough	Ochsner Foundation Hospital	No						rough@ochsner.org
1	Adena Boris	Metropolitan Hospital Council	No						@mhcn.org
2	Anna Silva	Our Lady of the Lake RMC	HRSA						@ololrnc.com
2	Allyn Whaley	Our Lady of the Lake RMC	HRSA						y@ololrnc.com
2	Keith Phillips	Earl K. Long	HRSA						@tsuhsc.edu
2	Christine Perkins	Baton Rouge General	HRSA						@brgeneral.org
3	Bob Basye	Terrebonne General Med Ctr	HRSA						.com
4	Anjanette Hebert	Lafayette General Med Ctr	HRSA 4-1	337					m
5	Mark Severns	Lake Charles Memorial Hosp	HRSA 5-1	337					.com
5	Lee Willeford	CHRISTUS St. Patrick of L.C.	HRSA 5-2	337					ristushealth.org
6	Mary Tarver	CHRISTUS St. Frances Cabrini	HRSA 6-2	318					stushealth.org
7	Knox Andress	CHRISTUS Schumpert Hlth Sys	HRSA 7-1	318					ristushealth.org
8	Mike Brame	St. Francis Medical Center	HRSA 8-1	318					.com
8	Teresa Reagan	Glenwood Regional Med Ctr	None	318					m
9	Robert Muller, MD	Northshore RMC	HRSA 9-1	985-641-2100	2244	985-960-1370	8125	2152	rmullerreg9bioter@aol.com

Wallet Cards
(front: names
and phone numbers)

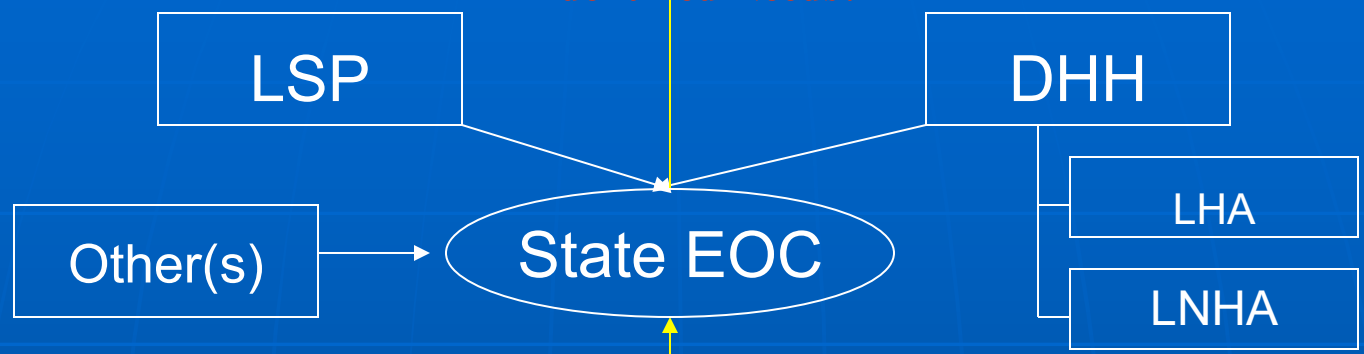
Wallet Cards
(back: radio call signs)

Federal Assets

Federal Level



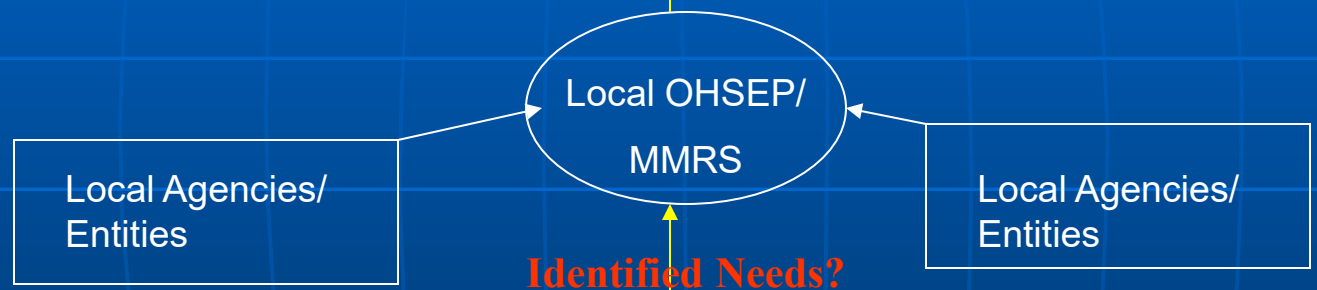
State Level



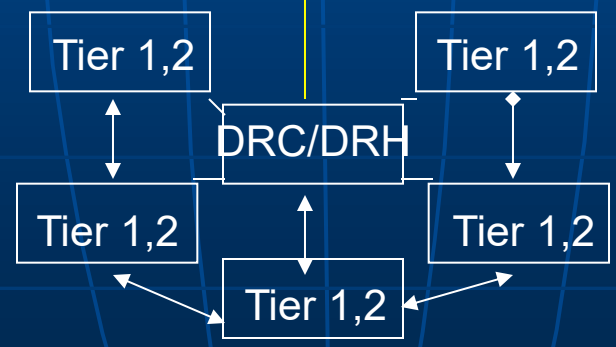
Identified Needs?



Local Level

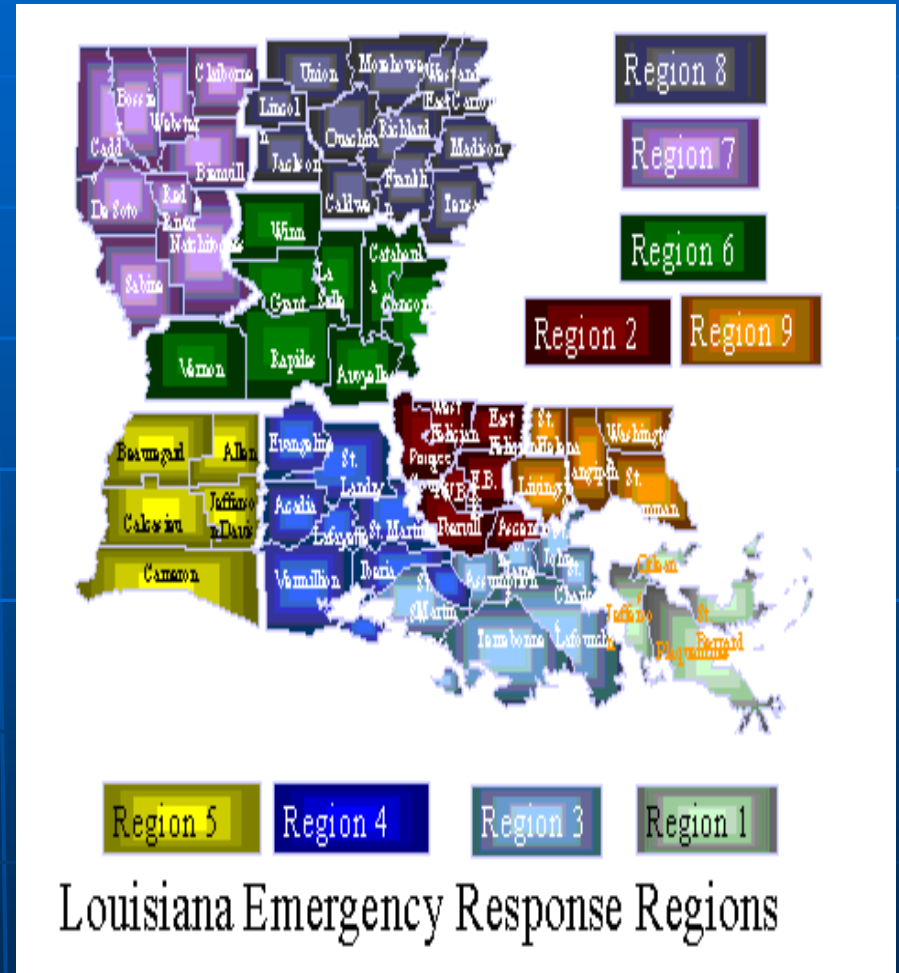


Identified Needs?



So lets drill this down...

- to northwest Louisiana's Region 7



HRSA Louisiana Region 7: Demographics

General Demographics:

- Region Population: 524,000 (Census 2000)
- Shreveport largest city: 200,145 (Census 2000)
- Planning for surging 264 (500/100,000,000)
- Number of Parishes: 9 in Northwest Louisiana
- Number of hospitals: 28 (17 "Tier 1" and "11 Tier 2")
- Partners - Shreveport Metropolitan Medical Response System; Caddo-Bossier Office of Homeland Security and Emergency Preparedness; Louisiana Office of Public Health (OPH)

Region 7 Hospitals in 9 Parishes



BIENVILLE PARISH

LA Extended Care Hospital

BOSSIER PARISH

CHRISTUS Schumpert Bossier

Summit Hospital of Northwest LA

Willis-Knighton Bossier HC

CADDO PARISH

Brentwood, A Behavior Health Company

CHRISTUS Schumpert Health System

CHRISTUS Schumpert Highland
Doctors' Hospital of Shreveport, Inc.
(Gen-108)

Dubuis Hospital of Shreveport

Highland Hills Hospital

Lagniappe Hospital

LifeCare Hospital

LSU-Health Sciences Center

North Caddo MC

Overton Brooks VA Medical Center

Shreveport Rehabilitation Hospital

Shriners Hospitals for Children-
Shreveport

Willis-Knighton MC

Willis Knighton Pierremont Health
Center

Willis-Knighton South and Center for
Women's Health

CLAIRBORNE PARISH

Homer Memorial Hospital

DESOTO PARISH

DeSoto Regional MC

NATCHITOCHE PARISH

Natchitoches Parish Hospital

Satellite Rehab Hospital

Extended Care

RED RIVER PARISH

CHRISTUS Coushatta

SABINE PARISH

Sabine MC

WEBSTER PARISH

Bernice Community Rehab

Community Hospital

Minden MC

Springhill Medical Center

HRSA Louisiana Region 7 Hospital Network Building

- **Network building**
 - **Meetings** – quarterly planning
 - **Education** - Hospital Hazmat courses; HEICS; Ham radio education; Guest speakers
 - **Exercises** – Strategic National Stockpile; Radiologic Dispersal Device (RDD); Hurricane/Aircraft Disaster; 800 MHz radio roll calls on Mondays AM.
 - **Entertainment** – Crawfish boil; Vendor fair (food)
 - **Outreach** hospital site visits

Region 7 Hospital Emergency Operations Center (EOC) Chronology

- August 28 - HRSA Louisiana DRC activation by Louisiana Hospital Association (LHA)
- August 29 - Report to Bossier EOC;
 - Katrina makes landfall.
 - Locate to CHRISTUS Schumpert Health System site.
 - Classrooms 3&4 transformation
- September 23 - Hurricane Rita landfall
- October 13 - Region 7 Hospital EOC stands down

Region 7 Hospital EOC Participants

- Brentwood Hospital
- CHRISTUS Schumpert Health System
- LSUHSC-Shreveport
- Promise Hospital
- Shriner's Children's
- Willis-Knighton Health System

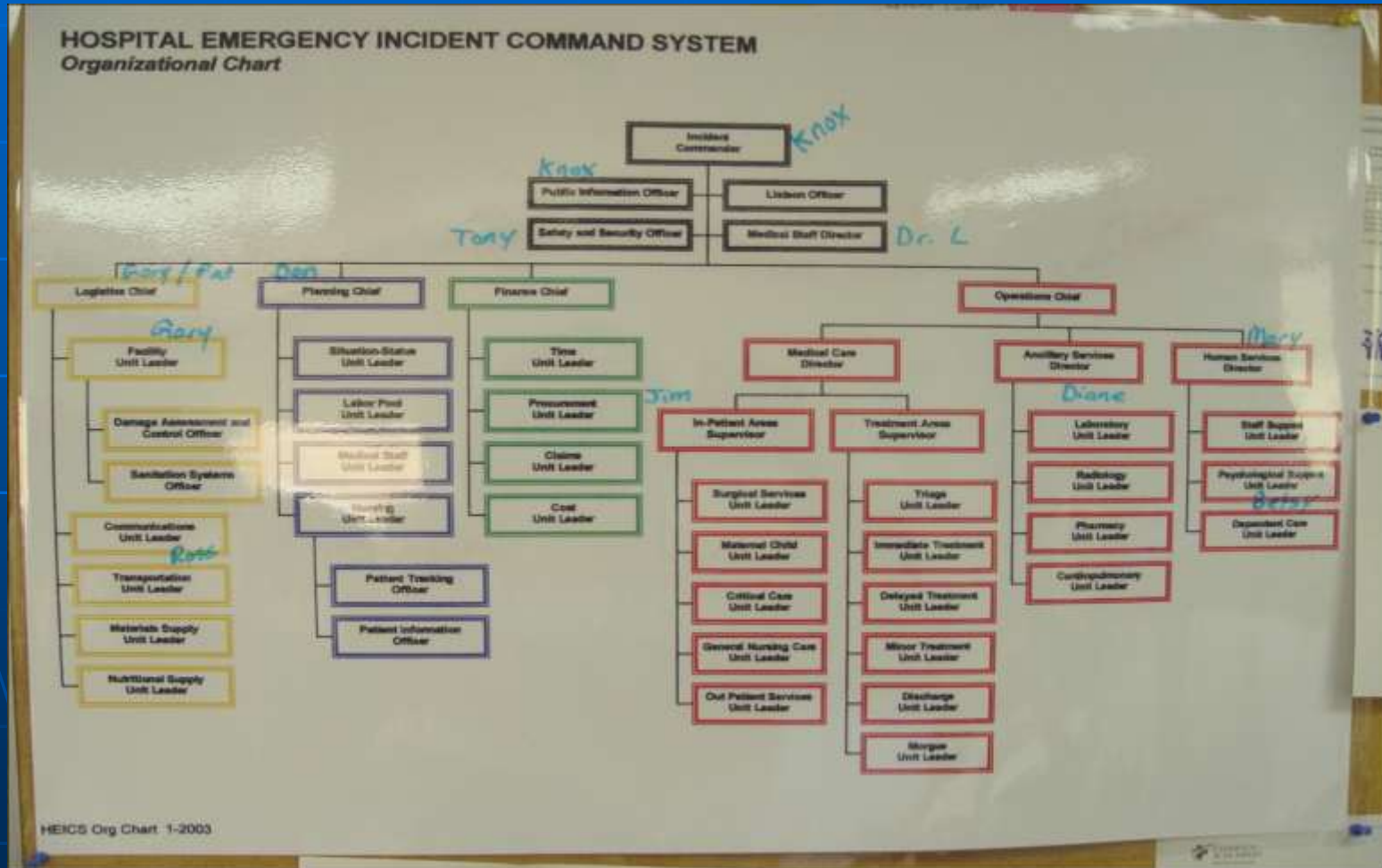


Region 7 Hospital EOC Functions

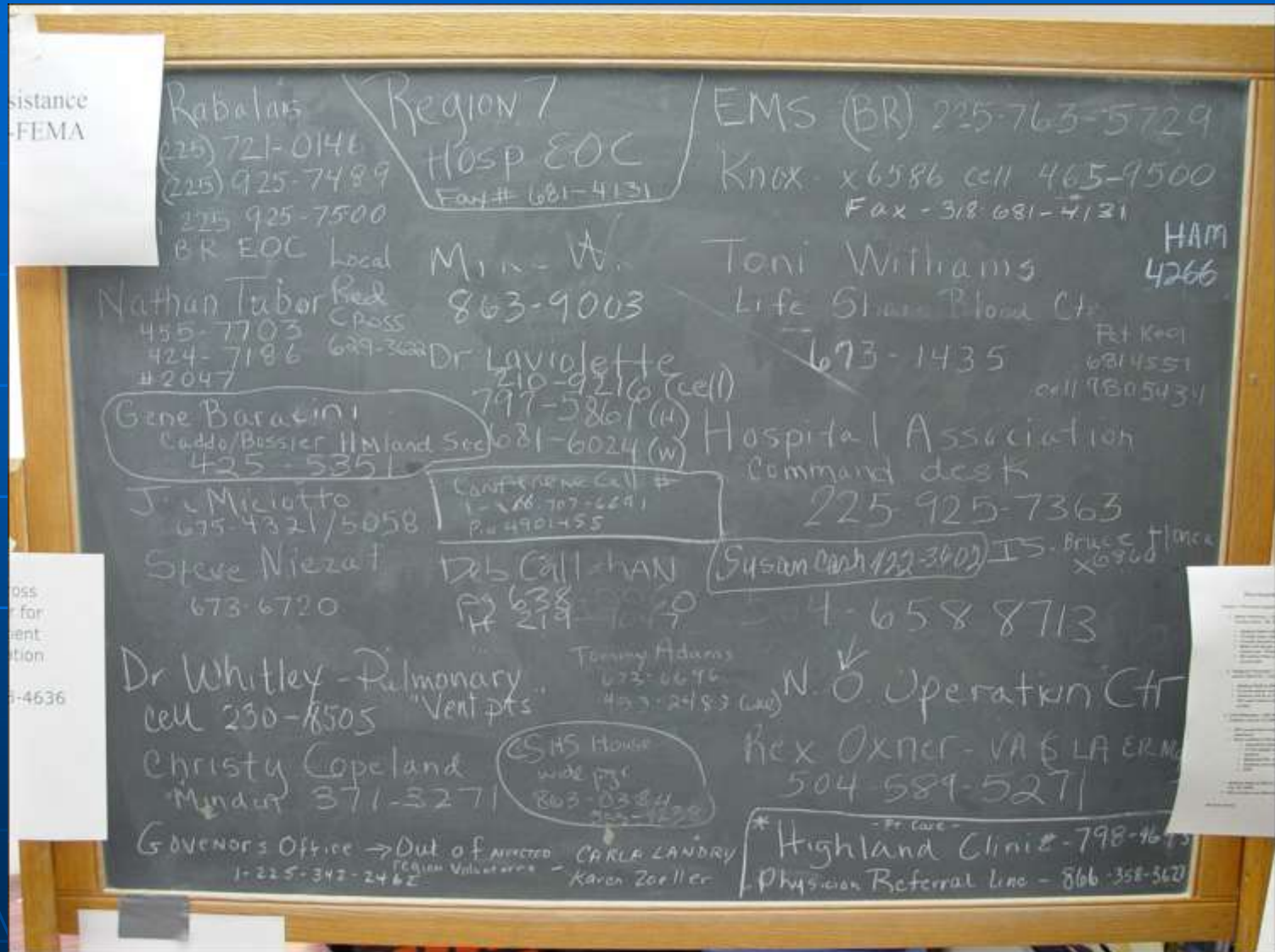
- Coordinate hospital/medical evacuee movement from hurricane affected regions
 - air & ground
- General and special needs shelter support
- Communications support
- Pharmaceuticals
- Medical supply
- Evacuee tracking



Coordination - Incident Command



Contacts



The Case for Regional Hospital Coordination, NDMS 2006, Knox Andress, RN

Coordination - Local Emergency Management

- Daily 9am briefings at Caddo-Bossier Office of Homeland Security and Office of Emergency Preparedness
- Daily telephone calls
- Coordinate medical needs - requests

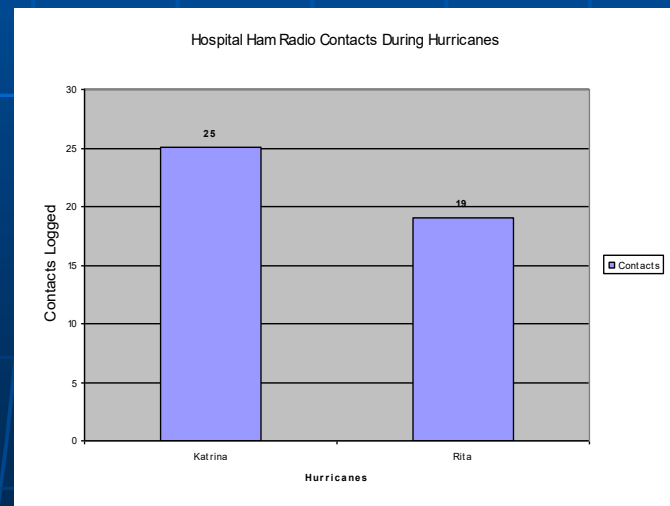


Hospital WEB-EOC Integration



Communications

- Statewide Regional Hospital conference calls 10am and 4 pm
- Region 7 hospital conference calls at 2 pm
- 800 MHz radio communications
- Email reports and requests for bed and ventilator inventories
- Ham radio operations



HRSA Region 7 Hospital Patient-Evacuee Web Page

Katrina Patient Finder

This information is posted to assist the public in locating hospital patients admitted or transferred from Hurricane Katrina affected areas. The information posted may not be accurate or complete, and the operators of this web site cannot be responsible for errors or omissions. This site was originally created at the request of the Health Resources and Services Administration (HRSA) Region 7 Coordinator. We are expanding the use of this site to include information about patients transferred to other hospitals in Louisiana and Texas as requested by government agencies or those hospital's administrators ([click here to see a current list of participating hospitals.](#))

Government agencies or hospital administrators interested in posting Hurricane Katrina patients on this site, please click [here](#) for more information.

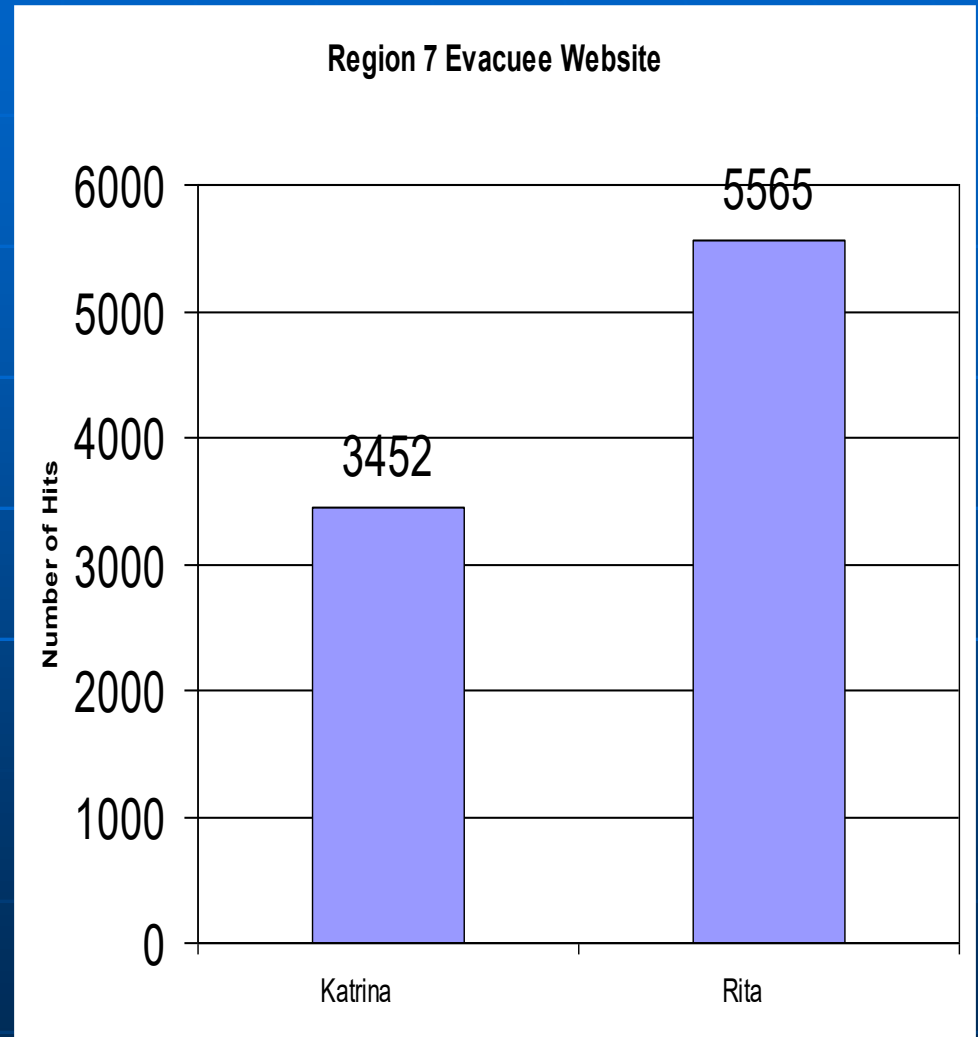
First name:

Last name:

(Please enter complete last name.)

Search

Evacuee Tracking Web Page – “Hits”



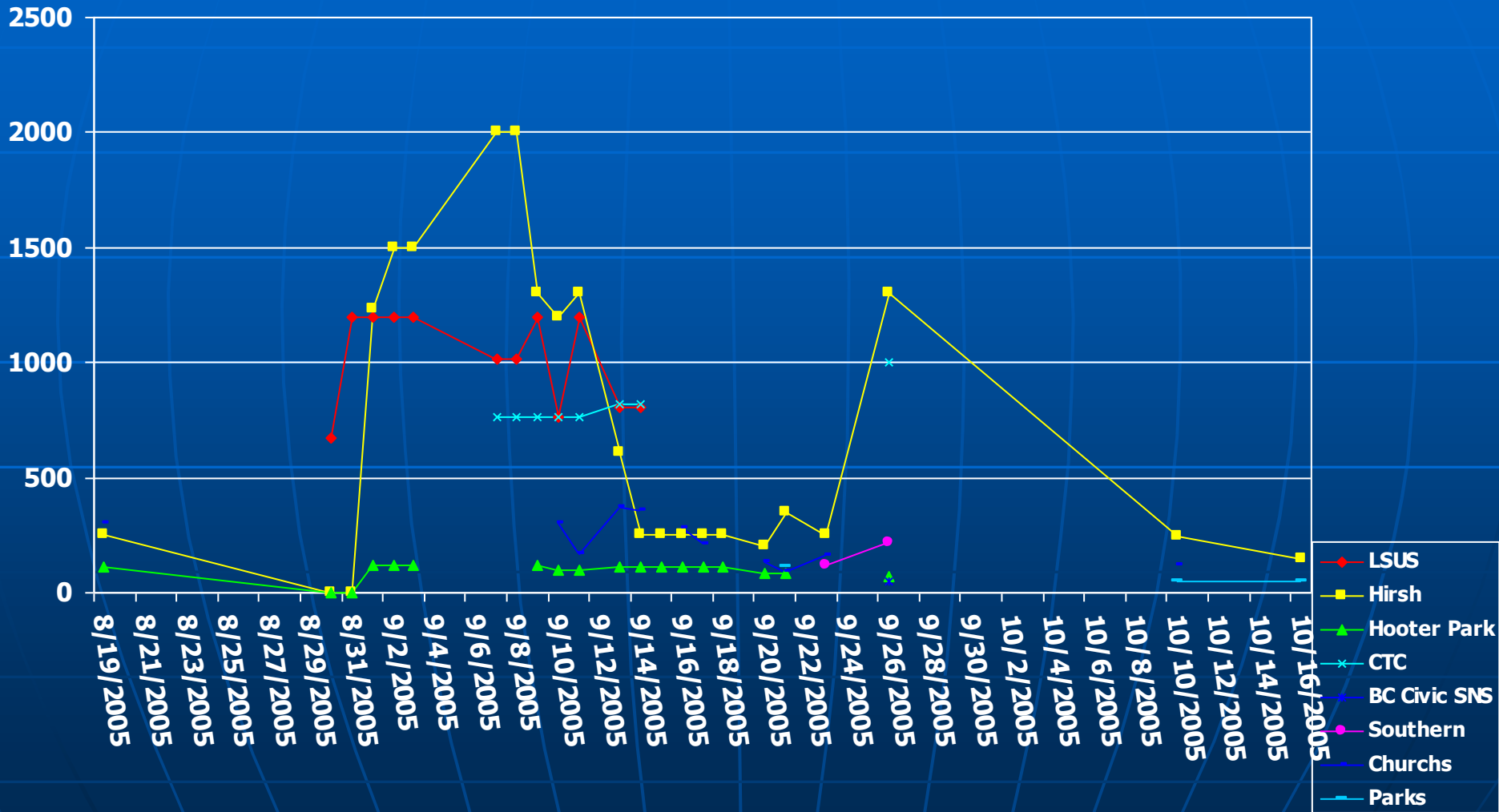
Volunteer Organization



Alternate Care Facilities

- Red Cross / General Shelters (4) in Shreveport-Bossier; others throughout the region.
- Bossier City Civic Center – “Special Needs Shelter”
- CHRISTUS Schumpert Bossier Rehabilitation (shuttered facility) reopened as “Special Needs Shelter”

Region 7 Shelter Populations



Shelter Support



Shelter Support - Clinics



Shelter Support - Pharmacy

- Local general shelters
- Statewide needs
- Staffing
- Inventories
- Dispensing questions

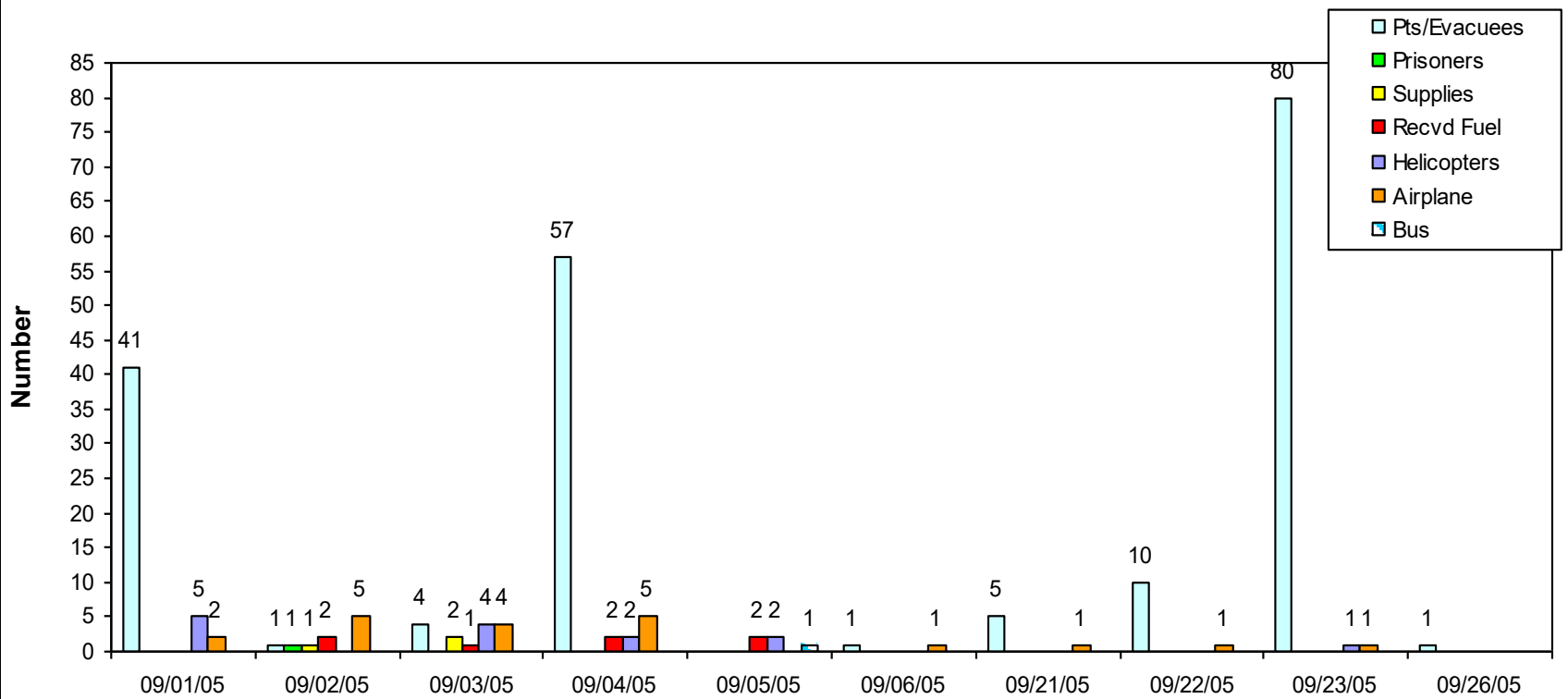


Shelter Support - Supplies



Flights into Regional Airport

Hurricane Katrina and Rita Region 7 Aircraft Activity



Coordinating Transports: Air and Ground



Coordinating Transports – Air and Ground



Region 7

Hospital Patient/Evacuee Numbers

- **2978 Katrina patient evacuees**
(August 28 – September 15).
- **1108 Rita patient evacuees**
(September 21 – October 20).

(HRSA guidance surge 500/1,000,000 population
= 264 for Region 7)

“Region 7 Lessons Learned”

- Need full-time scribe/recorder
- IT support superlative
- Tracking – evacuees, volunteers, medical participants
- Manual reporting bed counts and assets very challenging
- Linens/Oxygen were in short supply
- Shelter support with staffing needs
- Rumors – “How many planes are coming?”

“Lessons Learned” – (continued)

- Prepare to coordinate volunteer resources
- Hospital network – pre ID’s contacts important
- Develop alternate care sites (shuttered hospitals)
- Mental health issues/needs for hospitals and shelters - treatment locations and staffing
- Communication – 800 MHz, email, conference calls and ham radio were assets.
- Support financial recovery – legislation
- Plan for the degradation of standards

In Closing Region 7:

- The Region 7 Hospital EOC successfully coordinated response for 28 acute and non-acute care hospitals. (K=2978/R=1108)
- Response was locally coordinated with and supported by the Caddo-Bossier OHSEP and Shreveport MMRS.
- Recovery efforts (\$\$) continue.
- Regional hospital coordination with the other Louisiana hospital regions was paramount.

Thank you

Knox Andress, BA, RN, FAEN
Region 7 Administrative Hospital DRC
LSU Health - Shreveport
Louisiana Poison Center
1455 Wilkinson Street, Shreveport
Office (318) 813-3311; Cell (318) 465-9500
Willie.andress@lsuhs.edu