



CALIFORNIA'S COVID-19 RESPONSE

July 17, 2020

California's Bottom Line

Learning is non-negotiable.

Schools must provide meaningful instruction during the pandemic whether they are physically open or closed.

California's Bottom Line

Students, teachers, staff, and parents prefer in-classroom instruction — but only if it can be done safely.

Safety is determined by local health data.

California's Pandemic Plan for Schools



1. Safe in-person school based on local health data



2. Mask requirements



3. Physical distancing + other adaptations



4. Regular testing + dedicated contact tracing



5. Rigorous distance learning

1. Safe In-Person School Based on Local Health Data



Using health data, schools can physically open when its county has been off the Monitoring List for 14 consecutive days.

Schools that don't meet this requirement must begin the year distance learning.

2. Mask Requirements



- All school staff and students in 3rd grade and above must wear masks
- Students in 2nd grade and below are encouraged to wear masks or face shields

3. Physical Distancing & Other Adaptations



- **Staff must maintain 6 ft between each other and with students**
- **Symptom checks**
- **Hand washing stations**
- **Sanitation and disinfection**
- **Quarantine protocols**

4. Testing and Contact Tracing



- **Requirement to test staff regularly**
- **State contact tracing workforce will prioritize schools**

5. Rigorous Distance Learning

New Statewide Requirements:



- **Access to devices and connectivity for all kids**
- **Daily live interaction with teachers and other students**
- **Challenging assignments equivalent to in-person classes**
- **Adapted lessons for English language learners and special education students**

Ensuring Quality Instruction this School Year



The State has invested \$5.3 billion in additional funding with priority on equity

When Should In-Person Learning Close?

- Schools should consult with a public health officer first
- A classroom cohort goes home when there is a confirmed case
- A school goes home when multiple cohorts have cases or more than 5% of school is positive
- A district goes home if 25% of their schools are closed within a 14-day period

California's Bottom Line

Learning is non-negotiable.

Neither is safety.

Today's COVID-19 Case Numbers

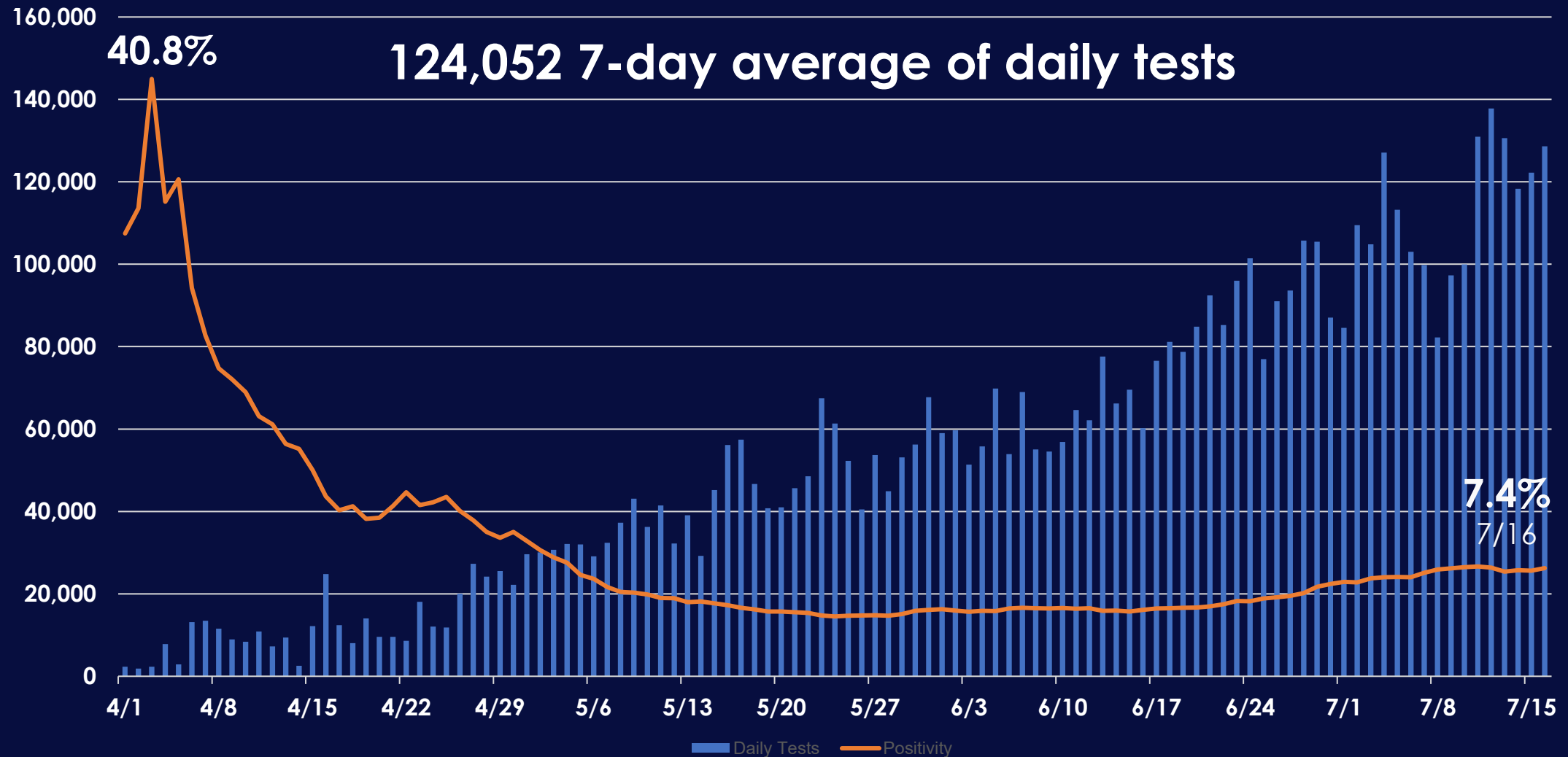
9,986

July 16

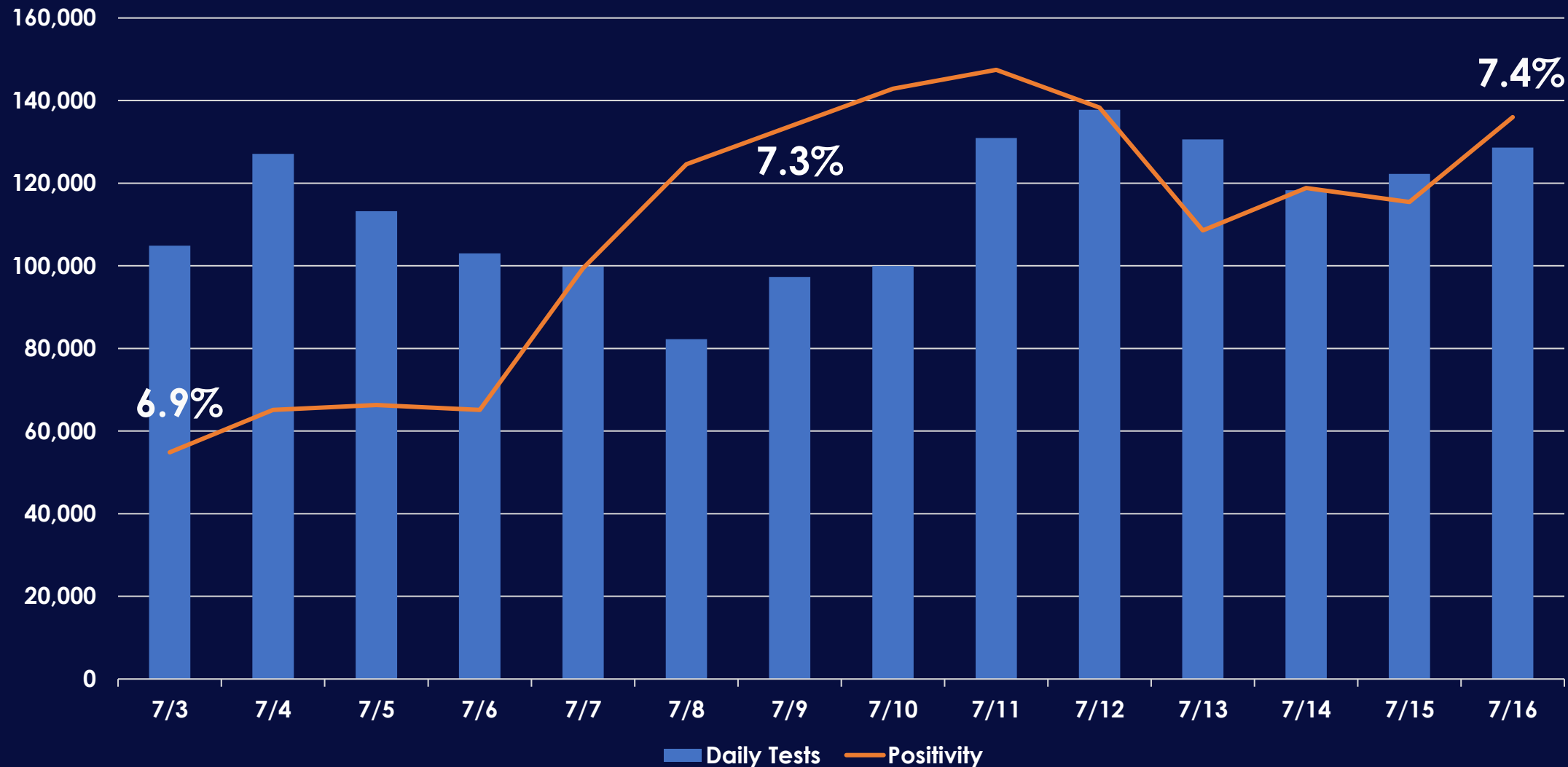
8,838

7-Day Average

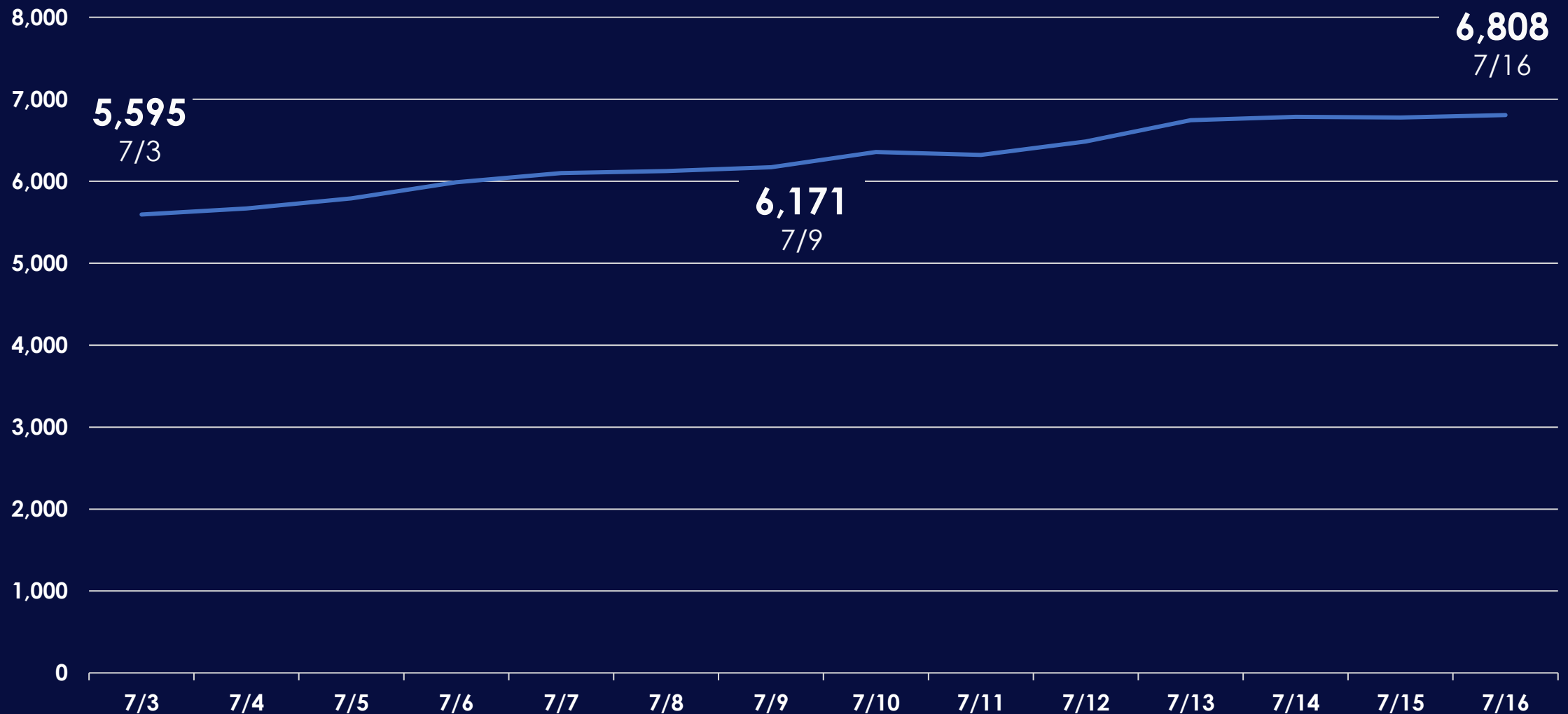
Total Tests vs. Positivity Rate



14-Day Look at Test Positivity Rate



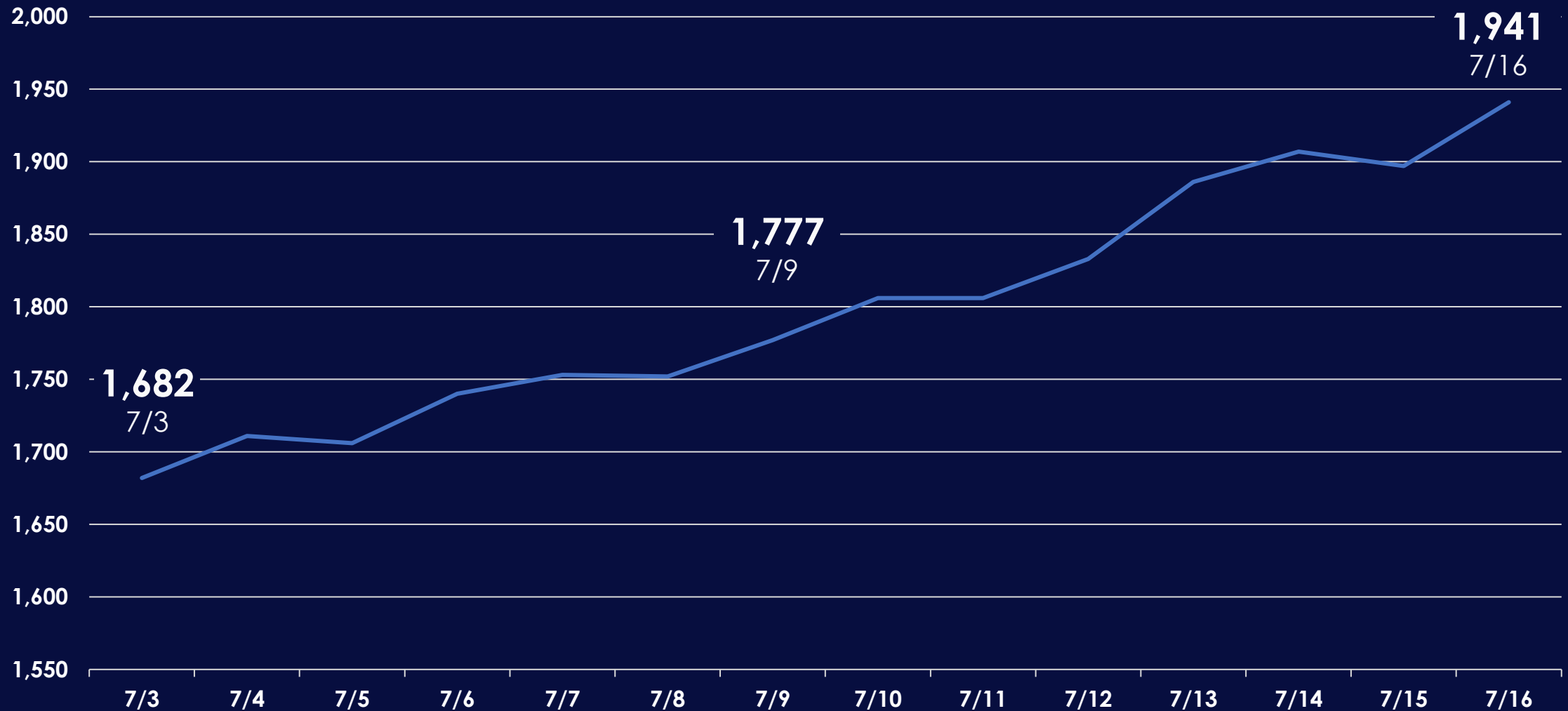
COVID-19+ Hospitalizations are Increasing



California's Healthcare System Capacity



COVID-19+ ICU Admissions are Increasing



California's Critical Care Capacity

1,941

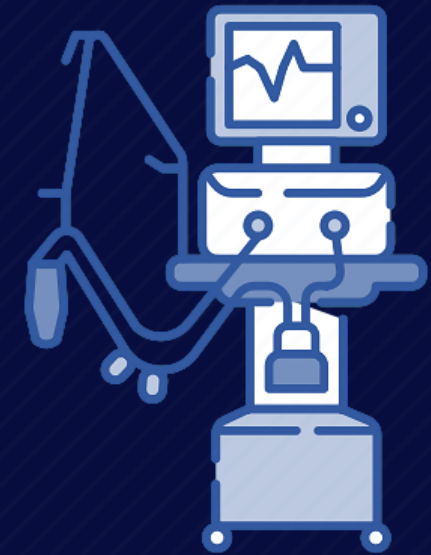
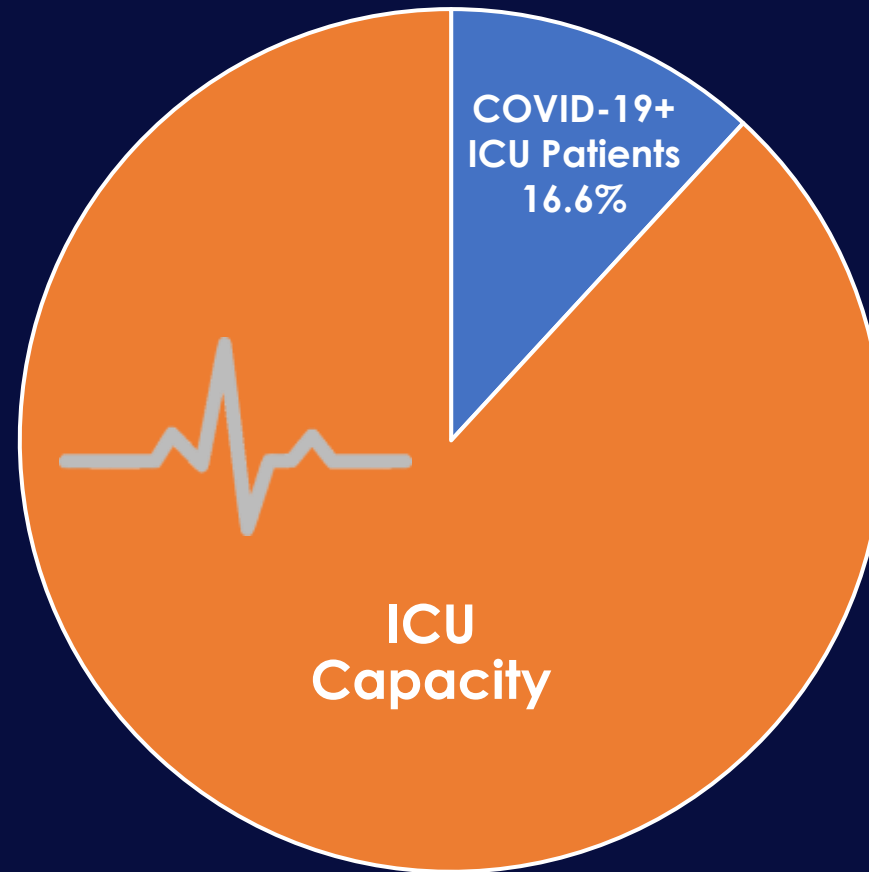
Total ICU
COVID-19+ Patients

3,802

Total ICU & NICU Beds
Available

11,711

Total ICU & NICU Beds



10,332

Ventilators Available

Counties on Monitoring List for 3+ Days



Alameda

Colusa

Contra Costa

Fresno

Glenn

Imperial

Kings

Los Angeles

Madera

Marin

Merced

Monterey

Napa

Orange

Placer

Riverside

Sacramento

San Benito

San Bernardino

San Diego

San Joaquin

San Luis Obispo

Santa Barbara

Santa Clara

Solano

Sonoma

Stanislaus

Sutter

Tulare

Ventura

Yolo

Yuba

REMINDER: Your Actions Can Save Lives

Wear a mask

Physically distance

Wash your hands

Minimize mixing



Learn more at
covid19.ca.gov