


2022 ANNUAL REPORT

HARRIS COUNTY JUVENILE PROBATION DEPARTMENT



Redefining

Juvenile Justice A New Strategy



Provide Equitable Opportunities | Support Positive Youth Development
Embrace the Voice of Lived Experience | Engage Community Collaboration

“We have a powerful potential in our youth, and we must have the courage to change old ideas and practices so that we may direct their power toward good ends.”

- Mary Mcleod Bethune

MISSION STATEMENT

The Harris County Juvenile Probation Department is committed to the protection of the public utilizing intervention strategies that are community-based, family oriented, and least restrictive while emphasizing responsibility and accountability of both parent and child.

CORNERSTONES



Youth Centered

Because all young people have value and potential, even when they have made serious mistakes, everything we do will be youth centered.



Community & Family Partnerships

Because young people are most likely to thrive when they are connected to positive adults and opportunities in their own communities, we will continuously build meaningful and authentic partnerships with communities and families most impacted by the youth justice system.



Accountability & Continuous Improvement

Because we believe we can always be better tomorrow than we are today, we will strive for continuous improvement. We will hold ourselves accountable for results and for putting our values into practice while modeling and advocating for accountability in the young people we serve.



Equity

All aspects of our work will expressly prioritize an equitable and individualized approach to juvenile justice with special emphasis on our most impacted communities and vulnerable populations.

Harris County Commissioners Court

Harris County Commissioners Court is a five-member elected body responsible for the general administration of county business.

As a county agency, the Juvenile Probation Department receives most of its annual budget from the Commissioners Court.

The Commissioners Court also determines county personnel regulations and sets operational guidelines followed by the department.

Commissioners Court support enables the Juvenile Probation Department to provide services to thousands of at-risk young people and their families each year.

Harris County Juvenile Board

The Harris County Juvenile Board is the governing body of the Juvenile Probation Department. It also serves as the school board for the Juvenile Probation's Excel Academy Charter School. As mandated by state statute, the Juvenile Board monitors all of the department's programs, institutional services, and residential placement facilities. The board also sets administrative policies and approves the department's annual budget prior to submission to Commissioners Court.

2022 Board Members

Judge Lina Hildalgo Harris County Judge Chairperson	Judge Natalia Oakes 313th District Court	Judge Michelle Moore 314th District Court	Judge Leah Shapiro 315th District Court Vice Chairperson Secretary
Judge Julia Maldonado 507th Family District Court	Judge Tanya Garrison 157th Civil District Court	Judge Lucia Bates Justice of the Peace Precinct 3 Place 2	Judge Danilo Lacayo 182nd Criminal District Court

Lina Hidalgo

Harris County Judge

2022 Commissioners

Rodney Ellis

Commissioner, Precinct 1

Adrian Garcia

Commissioner, Precinct 2

Tom S. Ramsey

Commissioner, Precinct 3

R. Jack Cagle

Commissioner, Precinct 4

LETTER FROM THE CHIEF

Henry Gonzales Executive Director Chief Juvenile Probation Officer

As we began to transition out of a pandemic, 2022 brought with it a sense of normalcy. However, for juvenile justice in Harris County, this normalcy would look different. The urgency to respond to the pandemic to ensure the safety of all involved provided the opportunity to examine not only our processes, but also our response to referrals.

Once the pandemic started to subside, we anticipated referral numbers would begin returning to pre-pandemic status, and the data in this report will show that was an accurate assessment.

However, our response to those referrals demonstrates just how juvenile justice has been redefined using strategies that minimize a young person's exposure to the system.

Community-based, non-profit Change Happens became the intermediary for the first Youth Justice Community Reinvestment Fund in Harris County.

This fund provides financial support to smaller, community-based organizations who are addressing the needs of those involved in our system from within the most impacted communities. As the intermediary, Change Happens also

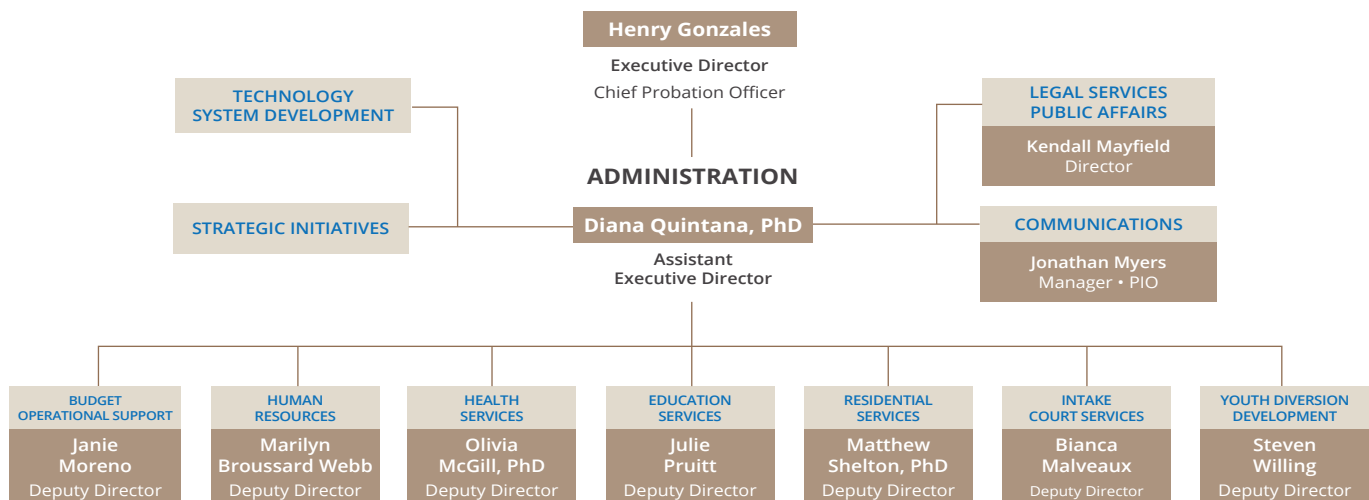
assists these organizations in building their capacity to continue their efforts in prevention and intervention strategies.

Through a collaboration with Harris County Resources for Children and Adults, (HCRCA) youth referred for lower-level offenses are diverted to HCRCA away from the juvenile justice system.

The Juvenile Courts continue their focus on keeping adjudicated youth in their communities with connections to supports and opportunities that increase their chances for success.

We have made great progress in our commitment to transform a former juvenile correctional facility into a community-based center providing education, vocational training, workforce development, job placement, and wrap around services as an alternative to out of home placement.

As we continue redefining juvenile justice, our strategy is to create a positive system that leads to safer communities by providing opportunities for young people while supporting their redirection from justice system involvement.



EXPENDITURES

Department Statistics

Harris County	\$
Harris County General Fund	85,498,440.13
Juvenile Supervision Fees	1,485.00
Family Protection Fees	10,100.00
	\$85,510,025.13

State	\$
TJJD • State Financial Assistance	16,548,215.96
TJJD • Leadership Academy	1,140,788.66
TJJD • Special Needs Diversionary	249,626.69
TJJD • Discretionary State Aid- Residential Leadership	304,402.42
TJJD • Vocational Pilot Program	46,514.40
TJJD • Risk & Needs Assessment	59,983.43
TJJD • Multi-Systemic Therapy	339,501.03
TJJD • Discretionary State Aid- Residential Detention	4,895.88
HGAC • Regional Juvenile Mental Health Services	15,000.00
OOG • Gang Recidivism Intervention Program	10,000.00
OOG • Sobriety Over Addiction and Relapse Drug	55,686.72
	\$18,747,615.19

Private	\$
Anne E. Casey Foundation	10,531.64
Work Texas	89,405.57
	\$ 99,937.21

Federal	\$
Girls Inspiring Future Triumphs (GIFT)	359,929.90
	\$359,929.90

Federal • State • Other	\$
JJAEP Programs and Charter School	\$5,401,380.00

Total	\$
2022 EXPENDITURES	\$110,145,887.43

JPD Expenditures	\$
Without JJAEP/Charter School	\$104,744,507.43

Total Expenditures

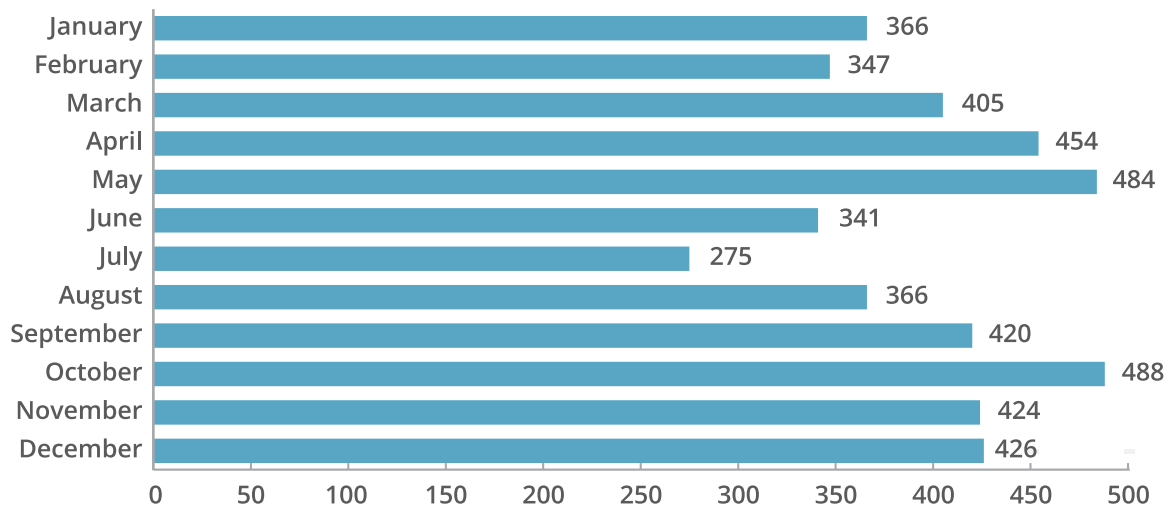
\$104,744,507.43

Harris County	\$85,510,025.13
State	\$18,747,615.19
Private	\$99,937.21
Federal	\$359,929.90
Other	\$5,401,380.00

*In Calendar Year 2022,
\$85,498,440.13 was
allocated for staff salaries,
direct client services, county
facilities, and general
operating expenses.*

REFERRAL DATA

Number of Referrals by Month



Total 4,796

Females by Age, Race, Ethnicity

Age	Black	Hispanic	White	Other	Total
10	2	1	0	1	4
11	8	8	1	0	17
12	34	30	5	0	69
13	64	46	13	0	123
14	111	73	32	2	218
15	133	94	19	0	246
16+	158	103	20	2	283
Females Sub-Total	510	355	90	5	960

Males by Age, Race, Ethnicity

Age	Black	Hispanic	White	Other	Total
10	4	3	4	0	11
11	25	28	6	0	59
12	69	52	10	1	132
13	178	141	40	7	366
14	351	263	46	9	669
15	512	421	74	5	1,012
16+	855	629	91	12	1,587
Males Sub-Total	1,994	1,537	271	34	3,836

As pandemic threat levels decreased through 2022, referrals increased to levels comparable with pre-pandemic (2019) statistics; however, post-pandemic (2022) referrals were down by 27% over pre-pandemic (2019) numbers.

Total Referrals by Age, Race, Ethnicity

Age	Black	Hispanic	White	Other	Total	% of Total
10	6	4	4	1	15	0.31%
11	33	36	7	0	76	1.58%
12	103	82	15	1	201	4.19%
13	242	187	53	7	489	10.20%
14	462	336	78	11	887	18.49%
15	645	515	93	5	1,258	26.23%
16+	1,013	732	111	14	1,870	38.99%
Total	2,504	1,892	361	39	4,796	100.00%
% Total	52.21%	39.45%	7.53%	0.81%	100.00%	

Referrals by School District

School District	Black	Hispanic	White	Other	Total
Aldine	164	165	8	0	337
Alief	109	70	4	3	186
Angleton	1	0	0	0	1
Channelview	3	19	6	0	28
Clear Creek	15	17	13	3	48
Conroe	3	0	1	0	4
Crosby	5	8	6	0	19
Cypress-Fairbanks	302	192	35	10	539
Dayton	0	0	1	0	1
Deer Park	2	17	9	0	28
Excel Academy	243	109	4	1	357
Fort Bend	23	9	1	0	33
Galena Park	35	54	3	0	92
Goose Creek	35	42	11	0	88
Houston	693	420	30	3	1,146
Huffman	1	5	1	1	8
Humble	143	49	27	3	222
Katy	65	29	17	3	114
Klein	85	70	34	2	191
La Porte	3	4	10	0	17
Montgomery	1	0	0	0	1
Pasadena	33	202	12	1	248
Richard Milburn Academy	5	4	0	0	9
Sheldon	25	12	1	0	38
Southwest School	1	0	1	0	2
Spring	111	37	8	2	158
Spring Branch	17	46	6	0	69
Stafford	3	0	0	0	3
Sweeny	0	0	1	0	1
Texans Can Academies	25	17	0	0	42
Tomball	8	1	10	1	20
Waller	6	12	6	1	25
Charter Schools	30	43	0	0	73
GED Program	14	25	3	0	42
Private/Parochial	19	16	6	0	41
Out of County	98	63	33	1	195
Home School	52	36	15	0	103
Harris County Education Dept.	12	13	4	0	29
Juvenile Board Charter School	0	0	0	0	0
In Transition - Not Enrolled	0	0	0	0	0
Not Available	114	86	34	4	238
Total	2,504	1,892	361	39	4,796

Referring Agency

Agency	Total
Baytown Police Department	37
Constable's Office	423
Harris County Sheriff	655
Houston Police Department	1,388
Juvenile Probation Officer	205
Pasadena Police	147
Schools	1,271
Other	670
Total	4,796

Efforts in 2020 and 2021 to reduce the number of young people admitted to the Juvenile Detention Center resulted in a 31.4% drop. By the end of 2022, as the pandemic continued to alleviate, detention center admissions increased by 28% over 2021 numbers.

Referrals by Offense

Referral Type	2020	2021	2022
Felonies			
Arson	15	25	20
Assault - Felony	318	314	391
Auto Theft	34	28	37
Burglary	193	98	127
Drugs - Felony	77	70	87
Evade/Resisting Arrest Felony	167	186	185
Homicide	9	21	24
Mischief/Felony	32	31	41
Other	98	166	207
Other Personal	33	31	52
Robbery	420	419	326
Sexual Assault	65	73	77
Theft - Felony	69	70	114
Unauthorized Use of a Motor Vehicle	216	195	211
Sub-Total	1,746	1,727	1,899
Misdemeanor A & B			
Assault	508	573	1,103
Drugs	64	40	35
DWI - MA/MB	15	5	7
Evade/Resisting Arrest	364	297	384
Mischief	82	65	93
Other	425	434	622
Theft	302	163	219
Trespass - MA/MB	124	98	144
Sub-Total	1,884	1,675	2,607
Violations of Probation			
Violation of Probation - Technical	94	82	110
Violation of Probation - Other Juris.	104	109	180
Sub-Total	198	191	290
Grand Total	3,828	3,593	4,796

Court Activity

Court Decisions	Youth
Certification	16
TJJJD Commitment	16
TJJJD-Determinate Sentence	44
Probation	690
Placement	273
Field Supervision	416
Probation Other	1
Deferred Adjudication	212
Non-Suit/Dismissed	306
Total	1,284

Offense per Admission to Detention

Offenses	2016	2017	2018	2019	2020	2021	2022
Murder	5	5	18	16	10	21	35
Arson	34	23	24	26	10	4	6
Assault							
Felony	350	284	478	377	287	220	253
Misd A/B	598	549	605	581	250	121	159
Misd C	0				0	0	0
Sexual Assault	94	95	100	80	45	47	26
Robbery	347	403	398	470	458	423	333
Burglary	220	172	101	135	80	45	22
Theft							
Felony	86	85	89	61	37	29	30
Misd A/B	368	262	210	133	58	28	23
Misd C	0	0	0	0	0		0
Auto Theft	22	19	18	22	16	6	12
Unauthorized Use of a Motor Vehicle	152	181	160	156	93	82	58
Drugs							
Felony	55	36	32	37	27	8	10
Misd A/B	306	249	220	141	9	4	2
Misd C							
Mischief							
Felony	26	12	26	19	14	11	12
Misd A/B	116	82	80	70	15	10	17
Evade/Resisting Arrest							
Felony	98	108	102	134	95	44	43
Misd A/B	269	258	222	170	76	39	61
DWI - Misd A/B	2	1	8	2	4	1	1
Trespass	220	181	161	134	39	20	21
Other							
Felony	165	131	255	162	71	59	79
Misd A/B	297	311	576	339	206	198	249
Misd C	0	0	1	2	0		0
Disorderly Conduct	0	1	0	0	0		0
City Ordinance	0	3	0	0	0		0
Violation of Probation	768	822	565	408	148	91	191
Runaway* (CINS)	59	50	51	56	39	38	24
Other* (CHINS) Offenses							
TJJJD Runaways	6	10	23	5	0	2	4
Administrative Actions	165	130	101	104	83	78	90
Total	4,828	4,463	4,624	3,840	2,170	1,629	1,761

*Children in need of supervision (status offenses). Includes diverted youth.

Offense Severity

Offense Severity	Total
Felonies	1,899
Misdemeanor A & B	2,607
Violation of Probation	290
Total	4,796

ADMISSIONS TO DETENTION

Month, Age*

Age	Jan	Feb	Mar	Apr	May	Jun	Jul	Aug	Sep	Oct	Nov	Dec	Total	%
10	0	0	1	0	0	1	0	0	1	0	0	0	3	0.2%
11	0	1	0	1	0	0	1	2	1	0	0	2	8	0.5%
12	4	3	1	1	1	2	1	1	1	2	3	2	22	1.2%
13	12	8	5	11	13	7	8	5	4	14	8	7	102	5.8%
14	15	25	12	16	17	17	21	25	23	24	23	18	236	13.4%
15	32	25	42	34	51	39	44	40	35	46	44	30	462	26.2%
16+	78	69	83	75	73	69	64	115	67	96	60	79	928	52.7%
Total	141	131	144	138	155	135	139	188	132	182	138	138	1,761	100.0%

Month, Gender*

Gender	Jan	Feb	Mar	Apr	May	Jun	Jul	Aug	Sep	Oct	Nov	Dec	Total	%
Female	22	18	21	20	34	25	20	32	20	28	22	25	287	16.3%
Male	119	113	123	118	121	110	119	156	112	154	116	113	1,474	83.7%
Total	141	131	144	138	155	135	139	188	132	182	138	138	1,761	100.0%

*Youth may be counted multiple times if a youth had multiple admissions within the noted time period. Includes diverted youth.

Definition of Detention: Detention is the temporary and safe custody of juveniles. Generally, secure detention should be utilized for youth who, by nature of their offense(s) or conduct, are found to be a danger to self/others, or are believed to be a flight risk. Less restrictive alternatives to secure detention are preferred.

Despite continuing impacts due to the pandemic, the juvenile courts increased their dockets, and as a result, probation dispositions, deferred adjudications, and TJJD commitments increased (by 9.3%, 15.8%, and 60%, respectively.)

ADMISSIONS TO DETENTION

Month, Race, Gender*

Race	Gender	Jan	Feb	Mar	Apr	May	Jun	Jul	Aug	Sep	Oct	Nov	Dec	Total	%
Black	Female	13	9	10	13	17	13	8	16	8	16	13	13	149	8.5%
	Male	57	62	62	67	67	55	71	92	70	79	70	62	814	46.2%
Latin	Female	8	6	10	5	12	12	10	9	10	10	8	10	110	6.2%
	Male	54	42	52	45	43	49	45	56	40	68	39	48	581	33.0%
White	Female	1	2	1	1	5	0	2	5	2	2	1	2	24	1.4%
	Male	7	7	8	5	8	5	2	6	2	6	5	3	64	3.6%
Other	Female	0	1	0	1	0	0	0	2	0	0	0	0	4	0.2%
	Male	1	2	1	1	3	1	1	2	0	1	2	0	15	0.9%
Total		141	131	144	138	155	135	139	188	132	182	138	138	1,761	100.0%

Month, Race*

	Jan	Feb	Mar	Apr	May	Jun	JUL	Aug	Sep	Oct	Nov	Dec	Total	%
Black	70	71	72	80	84	68	79	108	78	95	83	75	963	54.7%
Latin	62	48	62	50	55	61	55	65	50	78	47	58	691	39.2%
White	8	9	9	6	13	5	4	11	4	8	6	5	88	5.0%
Other	1	3	1	2	3	1	1	4	0	1	2	0	19	1.1%
Total	141	131	144	138	155	135	139	188	132	182	138	138	1,761	100.0%

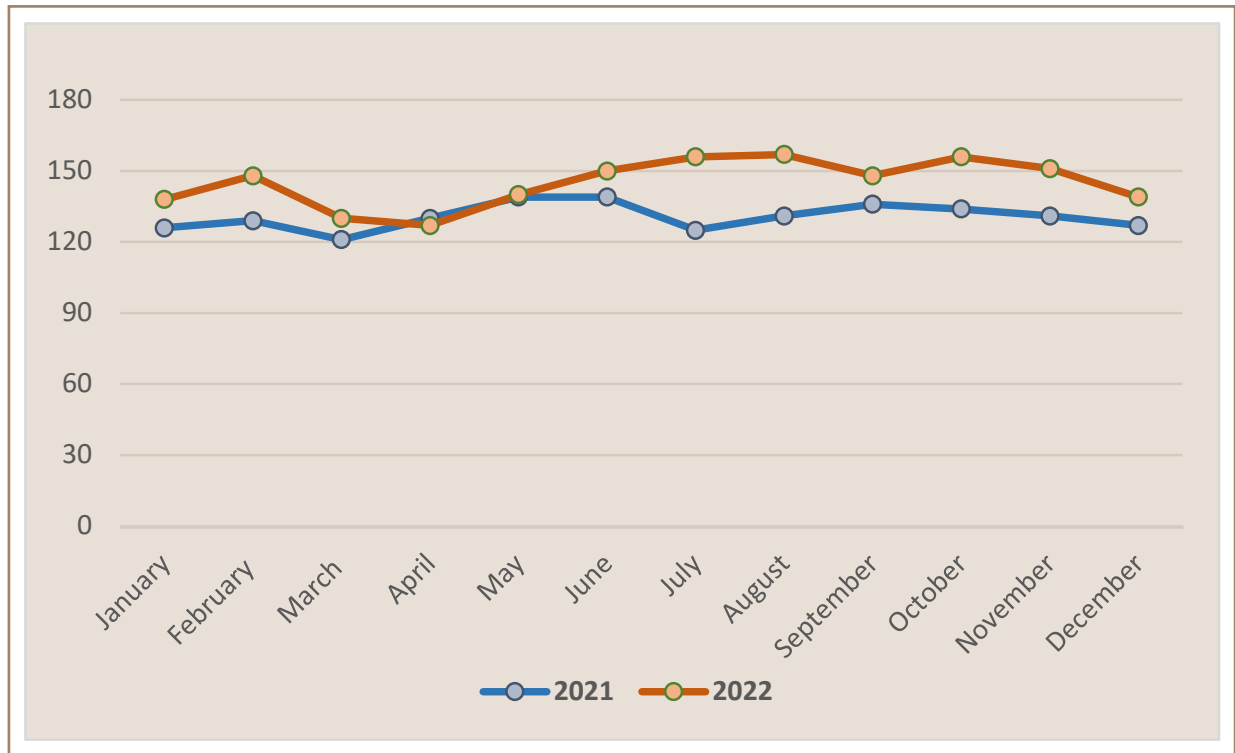
*Youth may be counted multiple times if a youth had multiple admissions within the noted time period. Includes diverted youth.

Definition of Detention: Detention is the temporary and safe custody of juveniles. Generally, secure detention should be utilized for youth who, by nature of their offense(s) or conduct, are found to be a danger to self/others, or are believed to be a flight risk. Less restrictive alternatives to secure detention are preferred.

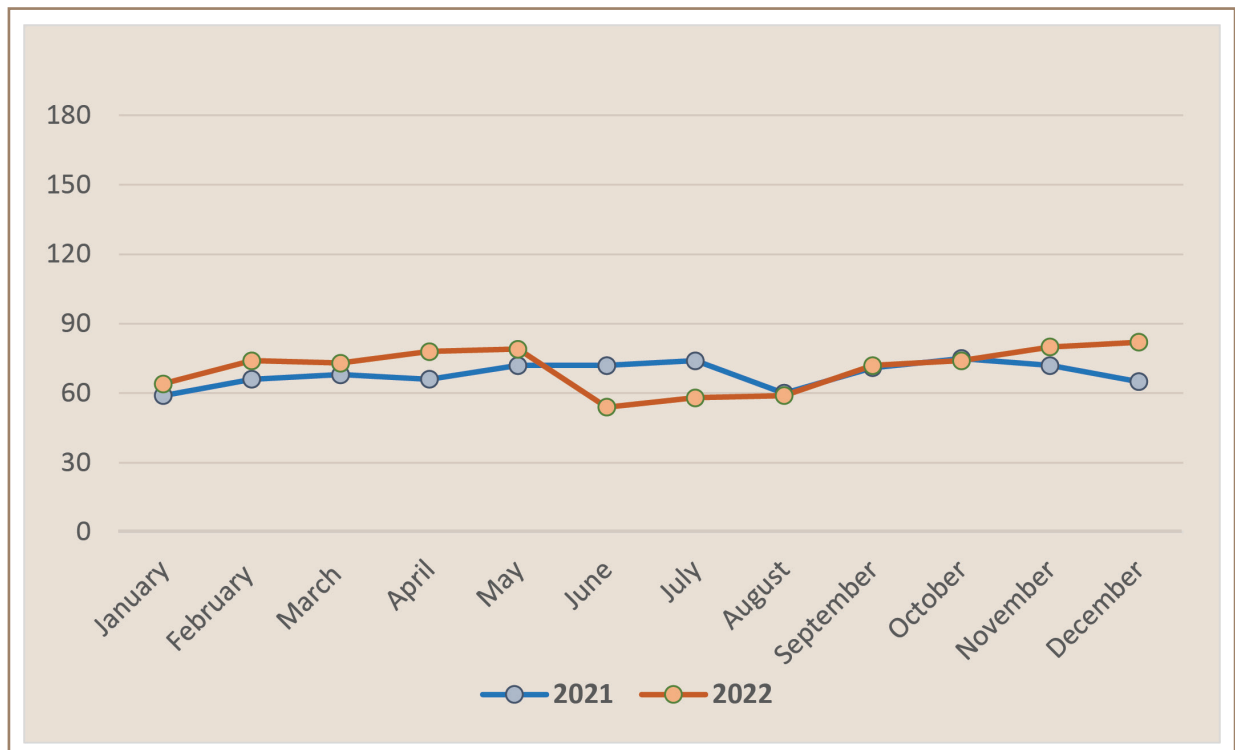
The number of youth placed in Harris County, juvenile post-adjudicated facilities declined by 13.2% since 2021 and by 33.2% since 2019. Private placements increased by 5% since 2019.

AVERAGE DAILY POPULATION

Pre-Adjudicated Average (County Facilities)



Post-Adjudicated Average (County Facilities)



YOUTH UNDER SUPERVISION

		Jan	Feb	Mar	Apr	May	Jun	Jul	Aug	Sep	Oct	Nov	Dec	Mo Avg
2020	Probation	1166	1138	1102	1050	976	910	825	728	660	623	591	553	860
	Deferred Adj	373	374	279	226	170	101	77	54	26	31	45	51	151
	Deferred Pros 180	153	151	177	161	154	153	107	63	35	22	15	7	100
	Deferred Pros 180 - Fifth Ward	12	12	18	18	18	13	12	9	5	3	0	0	10
	Deferred Pros - FIRST	119	113	119	116	94	76	76	75	47	67	90	83	90
	Deferred Pros 90	266	269	245	230	195	166	94	40	21	6	0	0	128
	Deferred Pros 90 - Under Age 12	4	4	4	2	3	3	3	2	2	1	0	0	2
	Diversion 180*							24	62	91	117	163	192	108
	Diversion 180 - Under Age 12*							0	0	0	0	0	0	0
	Second Chance*							16	37	73	85	74	72	60
	Second Chance - Under Age 12*							0	0	0	0	0	0	0
	RTC*												8	8
2021	Probation	745	672	691	689	690	700	689	694	705	722	763	781	712
	Deferred Adj	74	72	90	90	90	87	103	114	117	111	96	74	93
	Deferred Pros 180 - Fifth Ward	0	0	6	6	6	5	4	1	1	7	11	14	5
	Diversion 180 - Fifth Ward*				2	4	4	3	3	3	3	2	0	3
	Diversion 180 - Third Ward*									6	6	12	13	9
	Deferred Pros - FIRST	108	114	119	109	97	92	81	78	79	76	79	80	93
	Diversion 180	228	230	241	239	228	238	233	211	227	226	246	275	235
	Diversion 180 - Under 12	0	0	0	0	0	1	1	1	2	2	5	6	2
	Second Chance	93	103	121	107	103	98	78	68	76	92	130	173	104
	Second Chance - Under 12	0	0	0	0	0	0	1	1	2	4	6	7	2
	RTC	22	25	27	33	33	35	31	20	18	18	18	19	25
2022	Probation	798	802	820	832	842	836	863	885	892	905	917	922	860
	Deferred Adj	60	33	11	102	108	102	106	117	116	115	122	126	93
	Diversion 180 - Fifth Ward	13	14	16	15	14	8	4	4	4	5	2	2	8
	Diversion 180 - Third Ward	19	23	28	29	28	20	17	13	9	4	4	4	17
	Deferred Pros - FIRST	85	83	88	92	101	97	95	109	105	122	131	131	103
	Diversion 180	279	296	361	13	12	10	10	12	11	14	11	11	87
	Diversion 180 - Under 12	6	9	8	1	1	1	1	1	1	0	0	0	2
	Second Chance	177	172	177	167	209	212	170	156	196	245	263	263	201
	Second Chance - Under 12	8	5	3	0	0	0	0	0	0	0	0	0	1
	Second Chance - YSC*												83	83
	RTC	15	16	18	13	14	15	14	15	14	17	16	16	15

*Supervisions showing blank monthly entries (such as Diversion 180 for Jan - Jun) were not active supervision types during those months.

Juvenile Courts

Juvenile Judges

Honorable
Natalia Oakes

313th
District Court

Honorable
Michelle Moore

314th
District Court

Honorable
Leah Shapiro

315th
District Court

Associate Judges

Honorable
William Thursland

313th
District Court

Honorable
Eric Andell

314th
District Court

Honorable
Dena Fisher

315th
District Court

Honorable
Samanta Davis

Detention
Court Referee

Specialty Court Programs

GRIP
COURT

Gang Recidivism Intervention Program
focuses on reducing gang association by increasing pro-social factors, redirecting young people to healthier alternatives, and improving relationships within the family.

SOAR
COURT

Sobriety Over Addiction & Relapse
utilizes a collaborative, multi-disciplinary team approach designed to disrupt patterns of drug use and abuse using an individualized, clinical approach of treatment and therapeutic services.

CARE
COURT

Creating Advocacy, Recovery, and Empowerment
addresses the unique needs of young people who are involved in, or at risk of becoming involved in, commercial sex trafficking by using a trauma-informed, strength-based approach.

COURT
360°

Court 360° seeks to address underlying mental health concerns associated with at risk behaviors by providing intensive supervision and individualized case planning through advocacy, collaboration, and mentorship.

“Harris County continues to promote safe, healthy, thriving communities through restorative and evidence based strategies that foster public trust, prevent violence and trauma, reduce racial and economic disparities, and minimize justice system exposure where at all possible.”

- Harris County Vision for Justice & Safety



**Harris County
Juvenile Probation Department**

1200 Congress, Houston, Texas 77002

Phone: 713.222.4100

www.HCJPD.org