

October 20, 2017

Dear CAFE Member,

As you may have noticed over the last several years, CAFE is enjoying *an impressive growth spurt!* We've expanded our services, clients, staff, consultants, partnerships, contracts, grants, resources, online and social media presence—and most importantly, membership. The CAFE Membership Team recently met to discuss and enhance how we support and communicate with CAFE members, chapters, and regions. We are here to support **YOU** and **all CAFE members**, as follows:

Roxanna Espinoza, *CAFE Membership and Registration Assistant*

- performs data entry related to membership.
- processes receipts and payments related to chapter/affiliate business.
- assists with general membership inquiries.

Joshua Jauregui, *CAFE Administrative Systems and Membership Relations Manager*

- responds to chapter requests for support. (i.e. brochures, banners, rebates, membership questions, etc.)
- manages internal database related to the business side of membership.
- sends notices to chapter leaders regarding data and paperwork requirements.

Stanley Lucero, *CAFE Membership Consultant*

Transitions to a new role:

- sets up and staffs the CAFE membership and information tables/booths at the annual and regional conferences.
- works with regional representatives to recruit members to staff the conference booths and supports membership recruitment activities at these events.
- May also provide musical entertainment (along with local musicians) at conference events.

Laurie Nesrala, *CAFE Education Consultant and Membership Liaison*

- facilitates monthly communication between CAFE chapters/affiliates and CAFE Board & staff.
- gathers and disseminates news and updates regarding chapter, affiliate, local, regional, and state events, activities, and accomplishments.
- highlights chapter and membership news in the CAFE Corner e-newsletter, on social media and in other CAFE publications.

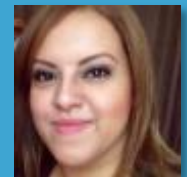
If you have suggestions, questions or concerns, please feel free to contact the person indicated above for each specific type of membership service. We look forward to working with you to further implement the [CAFE Vision and Mission](#). Thank you for being a CAFE member and for everything you do to support our students and their families, schools and communities. What an exciting time to be part of this wonderful, robust, and ever-growing organization!

Warm regards,

The CAFE Membership Team



CAFE Membership Team



Roxanna Espinoza



Joshua Jauregui



Stanley Lucero



Laurie Nesrala

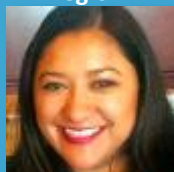
Regional Representatives on the CAFE Board of Directors

Region 1



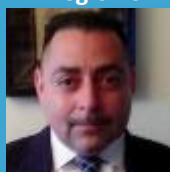
**Annie
BichLoan Duong**

Region 2



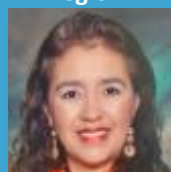
**Esabel
Cervantes**

Region 3



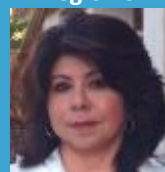
**Liberato
Figueroa**

Region 4



**Norma
Sandoval**

Region 5



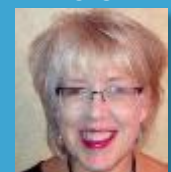
**Ana
Donovan**

Vice-President



**Annie
Rodríguez**

CEO



**Jan
Corea**