

Joy Lutheran Church

10111 E. Eagle River Loop Road, Eagle River, AK 99577

Office: 907.694.9601

www.joy-lutheran.com

joylutheran@gmail.com

November 8, 2020



23rd Sunday After Pentecost

Welcome to worship at Joy Lutheran Church

We extend a special welcome to those who are single, divorced, married, widowed, or if your relationship status is “complicated.”

We are glad you are here if you come every Sunday or if this is your first time at our church or any church at all. You’re welcome if you know the Bible backwards and forwards, or have never really read it, if you know Jesus or are just curious to hear what He is all about.

We welcome you if you have doubts about “organized religion” or are a “cradle Christian.” We welcome liberals, conservatives, moderates, and undecided. If you cheer for the right team, or don’t like sports, you are welcome here.

We especially welcome those who could use a prayer right now, or an assurance that God loves them, those who are struggling, and those who are doing okay.

Whoever you are, whatever your past or present – God welcomes you and so do we!

Children are always welcome here. We are used to the joyful sounds of our youngest sisters and brothers. We do have some activity bags near the main entrance, to keep restless hands busy. Due to COVID-19 we discourage use of our Family Room right now.

Joy Lutheran Church
10111 E. Eagle River Loop Road, Eagle River, AK 99577
Office: 907.694.9601 www.joy-lutheran.com joylutheran@gmail.com

November 8, 2020

Introduction

All Saints celebrates the baptized people of God, living and dead, who are the body of Christ. As November heralds the dying of the landscape in many northern regions, the readings and liturgy call us to remember all who have died in Christ and whose baptism is complete. At the Lord's table we gather with the faithful of every time and place, trusting that the promises of God will be fulfilled and that all tears will be wiped away in the new Jerusalem.

Welcome/Apostolic Greeting

P: The grace of our Lord Jesus Christ be with you all,

C: **and also with you.**

Hymn

Wake, Awake, for Night is Flying

ELW 436 (v. 1, 3)



1 Wake, a - wake, for night is fly - ing, the watch-men
2 Zi - on hears the watch-men sing - ing, and all her
3 Glo - ri - a! Let heav'n a - dore you! Let saints and



on the heights are cry - ing; a - wake, Je - ru - sa - lem, at last.
heart with joy is spring-ing. She wakes, she ris - es from her gloom.
an - gels sing be - fore you, with harp and cym-bal's clear-est tone.



Mid - night hears the wel - come voice - es, and at the
Her dear friend comes down, all glo - rious, the strong in
Gates of pearl, twelve por - tals gleam - ing, lead us to



thrill-ing cry re - joic - es: "Come forth, you maid-ens! Night is past.
grace, in truth vic - to - rious: her star is ris'n; her light is come.
bliss be-yond all dream-ing, with an - gel choirs a - round your throne.



Psalm

Psalm 70

You are my helper and my deliverer; O Lord, do not tarry. (Ps. 70:5)

¹Be pleased, O God, to deliver me;
 O Lord, make haste to help me.

²**Let those who seek my life be put to shame and confounded;
 let those who take pleasure in my misfortune draw back and be disgraced.**

³Let those who say to me "Aha!" and gloat over me
 turn back because of their shame.

⁴**Let all who seek you rejoice and be glad in you;
 let those who love your salvation say forever, "Great is the Lord!"**

⁵But as for me, I am poor and needy; come to me quickly, O God.
 You are my helper and my deliverer; O Lord, do not tarry.

Reading

1 Thessalonians 4:13-18

Some of the Thessalonians are worried that dead Christians will be excluded from the resurrection to eternal life when Christ comes again. Paul reassures them with the word of hope that all Christians, living or dead, will be raised into everlasting life with Christ.

¹³We do not want you to be uninformed, brothers and sisters, about those who have died, so that you may not grieve as others do who have no hope. ¹⁴For since we believe that Jesus died and rose again, even so, through Jesus, God will bring with him those who have died. ¹⁵For this we declare to you by the word of the Lord, that we who are alive, who are left until the coming of the Lord, will by no means precede those who have died. ¹⁶For the Lord himself, with a cry of command, with the archangel's call and with the sound of God's trumpet, will descend from heaven, and the dead in Christ will rise first. ¹⁷Then we who are alive, who are left, will be caught up in the clouds together with them to meet the Lord in the air; and so we will be with the Lord forever. ¹⁸Therefore encourage one another with these words.

Gospel Reading

Matthew 25:1-13

Jesus tells a parable about his own second coming, emphasizing the need for readiness at all times.

[Jesus said to the disciples:] ¹“Then the kingdom of heaven will be like this. Ten bridesmaids took their lamps and went to meet the bridegroom. ²Five of them were foolish, and five were wise. ³When the foolish took their lamps, they took no oil with them; ⁴but the wise took flasks of oil with their lamps. ⁵As the bridegroom was delayed, all of them became drowsy and slept. ⁶But at midnight there was a shout, ‘Look! Here is the bridegroom! Come out to meet him.’ ⁷Then all those bridesmaids got up and trimmed their lamps. ⁸The foolish said to the wise, ‘Give us some of your oil, for our lamps are going out.’ ⁹But the wise replied, ‘No! there will not be enough for you and for us; you had better go to the dealers and buy some for yourselves.’ ¹⁰And while they went to buy it, the bridegroom came, and those who were ready went with him into the wedding banquet; and the door was shut. ¹¹Later the other bridesmaids came also, saying, ‘Lord, lord, open to us.’ ¹²But he replied, ‘Truly I tell you, I do not know you.’ ¹³Keep awake therefore, for you know neither the day nor the hour.”

Sermon

Pastor Karen Sonray

Hymn

Drawn to the Light

ELW 593

1 Peo - ple who walk in dark - ness have sought a light in the
2 How can we tell a heav - en from hell if ev - 'ry - one
3 Where is the sun? Oh, there will be none! The Lamb is the
heart of the dark - est night. Just when we thought all would be
dwells in the dark of night? Morn - ing dis - pels, gent - ly com -
one who is shin - ing bright, bids us to come! Life has be -
lost, we were drawn to the light of God.
pels, and we're drawn to the light of God.
gun when we're drawn to the light of God.
Refrain
Dawn is in sight! Gone is the night, drawn to the
light and the morn - ing. Glo - rious and bright, oh, what a
sight to be drawn to the light of God.

Installation of Call Committee

P=Pastor, C=Congregation, CC=Call Committee members

P: Let us pray. Gracious God, in times of change and transition you provide leaders to guide and direct us. Through them, you lead us over the rough places, and comfort us when we are afraid. We pray today that you will send your Spirit to be with these leaders and each one of us during this time of discernment. We ask in the name of your Son, Jesus Christ our Lord. Amen.

P: Do you, the people of Joy Lutheran Church promise to hold this Call Committee in prayer?

C: We do and we ask God to help and guide us.

P: Will you accept their leadership, support them in their work, and encourage them in their deliberation?

C: We will and we ask God to help and guide us.

P: (To the Call Committee) You have prayerfully been selected to serve this congregation in selecting a pastoral candidate. You have been asked to give generously of your time. You have been entrusted with this responsibility on behalf of the whole congregation. Do you accept this responsibility and trust?

CC: We do and we ask God to help and guide us.

P: Will you faithfully participate in the process, support one another in meetings, and call upon the Spirit for guidance and direction in all you do?

CC: We will and we ask God to help and guide us.

P: Let us pray. Lord, bless the members of this committee, their work and decisions, that through them we might all be strengthened to serve you. Bless each member of the committee, that he or she might have the compassion, wisdom and energy to fulfill this responsibility. Keep us strong in faith and resolute in proclaiming the gospel to all people. We pray in the name of Jesus, our Lord. Amen.

Peace

L: The peace of Christ be with you.

C: And also with you.

(please exchange Christ's peace with a smile, nod, wave, or other non-contact sign)

Prayers

Lord's Prayer

**Our Father, in heaven,
hallowed be your name,
your kingdom come,
your will be done,
on earth as in heaven.
Give us today our daily bread.
Forgive us our sins,
as we forgive those
who sin against us;
Save us from the time of trial
and deliver us from evil.
For the kingdom, the power,
and the glory are yours,
now and forever. Amen.**

Benediction

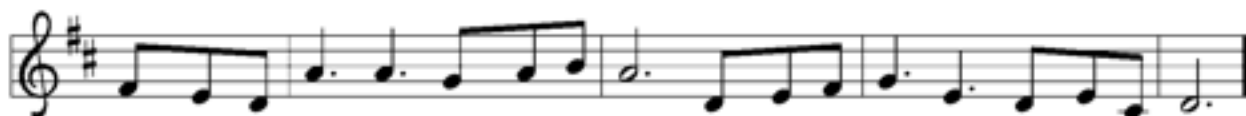
Sending Hymn

Blessed Assurance

ELW 638

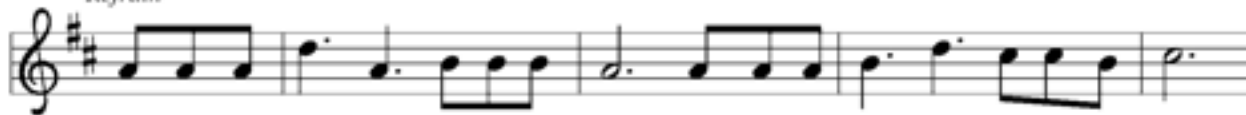


- 1 Bless-ed as-sur-ance, Je-sus is mine! Oh, what a fore-taste of glo-ry di-vine!
- 2 Per-fect sub-mis-sion, per-fect de-light, vi-sions of rap-ture now burst on my sight;
- 3 Per-fect sub-mis-sion, all is at rest; I in my Sav-ior am hap-py and blest,

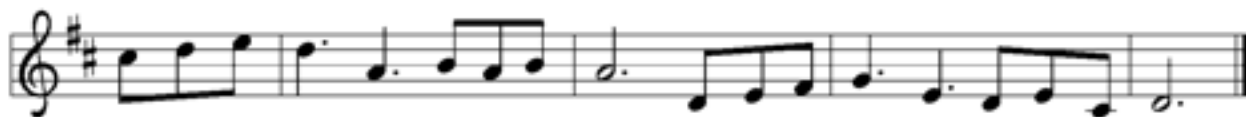


Heir of sal-va-tion, pur-chase of God, born of his Spir-it, washed in his blood.
an-gels de-scend-ing bring from a-bove ech-oes of mer-cy, whis-pers of love.
watch-ing and wait-ing, look-ing a-bove, filled with his good-ness, lost in his love.

Refrain



This is my sto-ry, this is my song, prais-ing my Sav-ior all the day long:



this is my sto-ry, this is my song, prais-ing my Sav-ior all the day long.

L: Go in peace to serve the Lord.

C: **Thanks be to God.**



Flowers are given
by Nancy Wojnowski



Worship Assistants for Today

| | | | |
|-------------------------------------|---|------------------------------------|-------------------------------------|
| Pianist: Kathy Huntington | Preacher: Pastor Karen Sonray | Reader: Henry Huntington | Song Leaders: Mona Mitton |
|-------------------------------------|---|------------------------------------|-------------------------------------|

Preview Of Upcoming Week

| | | |
|---------------------|---------------------------------|--|
| Sun., Nov. 8 | 9:30 AM 10:15 AM 10:15 AM | Worship with Installation of Call Committee Sunday School Confirmation |
| Mon., Nov. 9 | - All Day - 6:30 PM | Pastor Karen Office Day Narcotics Anonymous |
| Tues., Nov. 10 | 6:00 PM 6:30 PM | Alcoholics Anonymous Church Council Meeting |
| Wed., Nov. 11 | - All Day - 6:30 PM | JLC Office Closed - Veterans Day Federal Holiday Narcotics Anonymous |
| Thurs. Nov. 12 | - All Day - 6:30 PM | Pastor Karen Office Day Alcoholics Anonymous |
| Fri., Nov. 13 | 6:30 PM | Narcotics Anonymous |
| Sat., Nov. 14 | 9:00 AM | Saturday Morning Work Group - all welcome |
| Next Sunday: | | |
| Sun., Nov. 15 | 9:30 AM 10:15 AM 10:15 AM | Worship with Holy Baptism Sunday School Confirmation |

Confirmation & Sunday School Today at 10:15 a.m.

Preschool - K
1st - 4th Grade
5th - 6th Grade
Confirmation

Family Room off Sanctuary
Brause Fellowship Hall
Brause Fellowship Hall
Brause Fellowship Hall

LIST OF MITIGATION RULES FOR IN PERSON WORSHIP

1. Wear your face mask. We have extras if you need one. Pastor will be more than 10 ft away and remove her mask while presiding.
2. Keep 3 empty chairs (i.e. 6 ft.) between you and anyone not in your household
3. Capacity limit 50 – 60 (as of September 2020).
4. No use of hymnals.
5. Holy Communion will be offered first Sunday of the month using good protocol.***
6. Keep your mask on during singing and do not sing boisterously. Studies show that singing projects more air than coughing.
7. We will limit the worship service to approximately 35 minutes. The longer people share the same air space the greater the chance of spreading germs.
8. No contact during the passing of the peace. Stay at 6 ft. distances - sharing a peace sign, wave, hand over heart, or clasped hands and bow.
9. Offering plates are in stationary positions near entryways to avoid the passing of the plate. Thank you for your offerings!
10. We ask you to FILL OUT THE SHEET OF PAPER inside your bulletin and place it in the offering plate.
11. As you are dismissed, exit in a staggered rhythm to decrease proximity to one another.
12. If you use a bathroom, please clean all touchable surfaces before and after usage. Spray disinfectant and paper towels are available in each bathroom.
13. If you would like to visit after worship, we ask you maintain 6 ft. distances.
14. All coffee and food is suspended at this time. Exception is we will offer prepackaged food-to-go for Sunday School students.

***COMMUNION PROTOCOL

- *Come forward and take one pre-filled cup container and wafer (both are securely sealed in one unit)*
- *All are grape juice, no wine.*
- *There also gluten free wafers and juice marked.*
- *People will come forward in staggered intervals, take their communion, return to their seat.*
- *We will all partake at the same time after everyone is seated.*