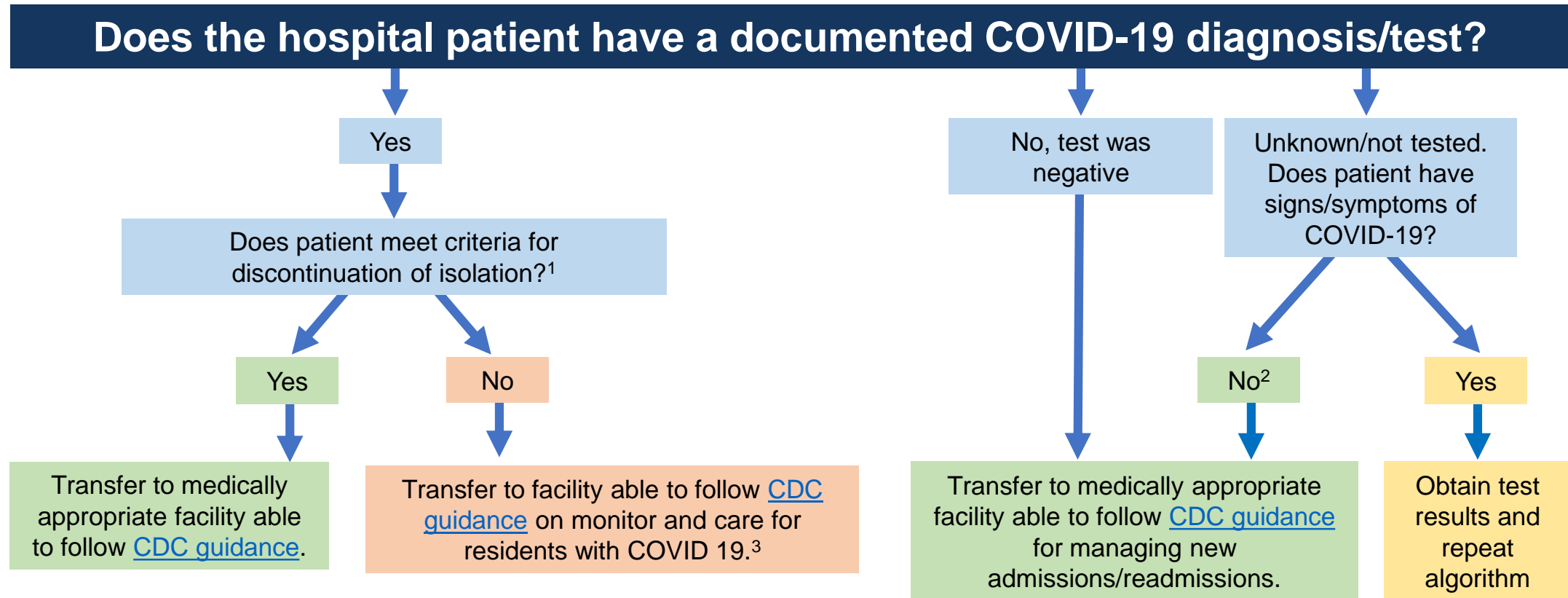


# Flow Diagram for Hospitalized Patients Being Discharged to a Long-term Care Facility



- 1. Criteria for discontinuation of isolation for patients being discharged to long term care facility:** Resolution of fever without the use of fever-reducing medications **and** Improvement in respiratory symptoms (e.g., cough, shortness of breath), **and** Negative results from at least two consecutive nasopharyngeal swab specimens collected  $\geq 24$  hours apart.
- 2.** CMS states testing can be considered if available. Testing should be considered in non-surge scenarios. Since the ability to detect transmission is limited during the incubation phase, a negative test does not rule out COVID-19 and patients should still be placed on 14-day transmission precautions when transferred to long-term care. Long-term care facilities **should NOT require two tests** – two tests are only indicated to document resolution of symptoms after known COVID-19 diagnosis.
- 3.** Check with facility to determine if patients requiring aerosolizing procedures, e.g. nebulizer treatment, are appropriate for transfer.