



University of California
San Francisco



ZUCKERBERG
SAN FRANCISCO GENERAL
Hospital and Trauma Center

2019 State of UCSF Research at ZSFG

Sue Carlisle, PhD, MD

Vice Dean

UCSF School of Medicine Dean's Office at ZSFG



Dean's Seminar

The ZSFG Dean's Seminar hosts presentations representing a breadth of research studies in basic sciences, bench-to-bedside, and clinical studies, to encourage research discussions and collaborations that will lead to innovations in medical research and clinical benefit.



Eunice Yu Zhou, Dean's Seminar Director

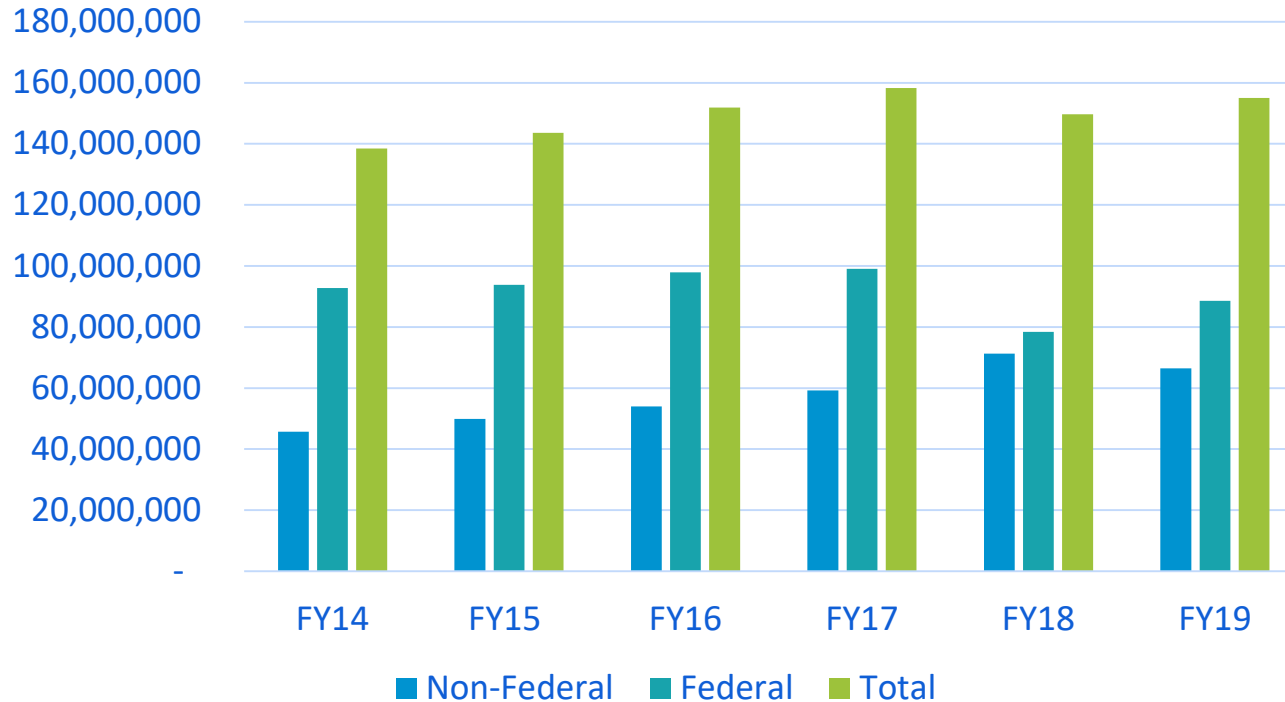
- First Fridays, 12-1pm plus 30 minutes for questions and networking
- Building 3, Conference Room 505
- Audience: Members of the research community at ZSFG and those interested in research. Sign up to receive notification of Dean's Seminars on the clipboard in the back of the room or contact Myleka.Johnson@ucsf.edu

UCSF Research at ZSFG: Overview

Essential to Meet the Missions of Both Organizations



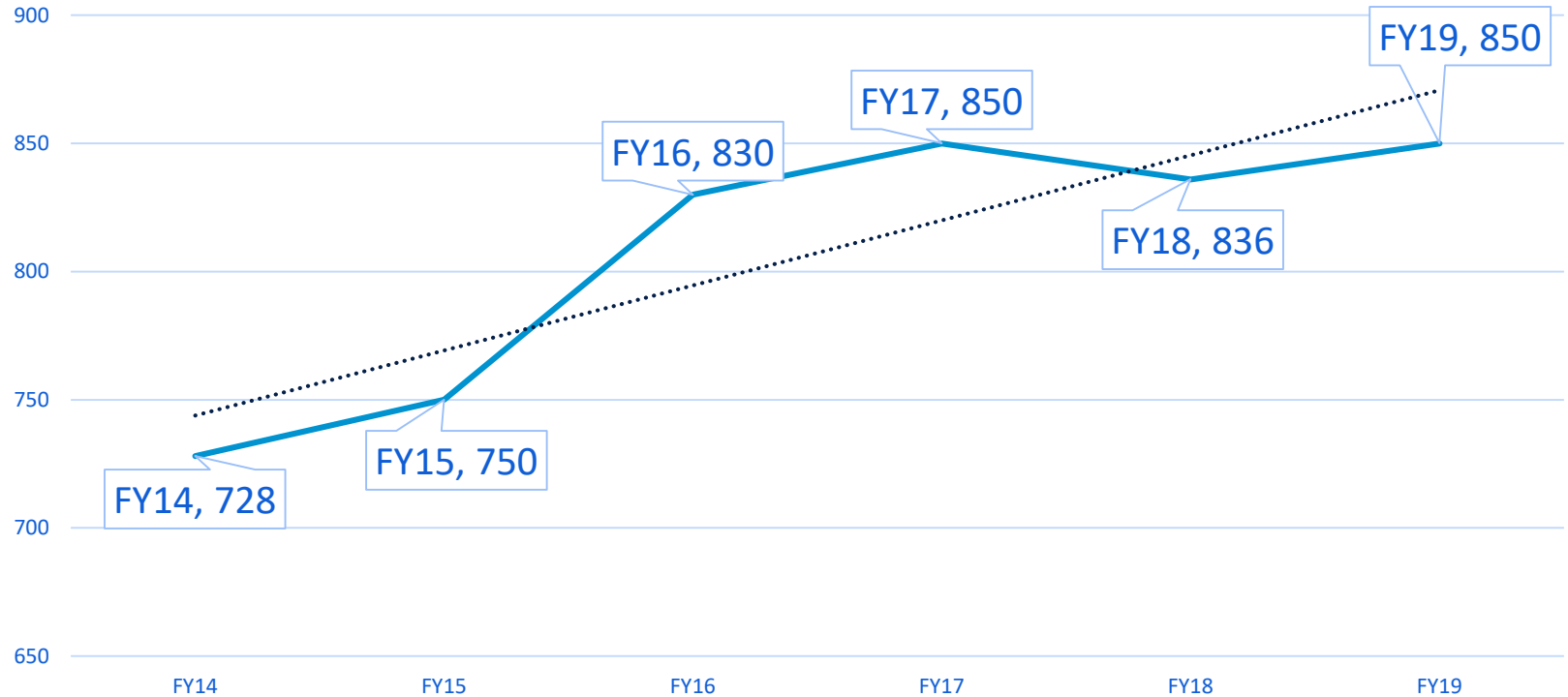
UCSF Research Spending at ZSFG



Considered alone, federal funding at ZSFG is comparable to that of institutions like the Duke University (ranked 16) and the Brigham and Women's Hospital (ranked 17). UCSF is ranked 6.

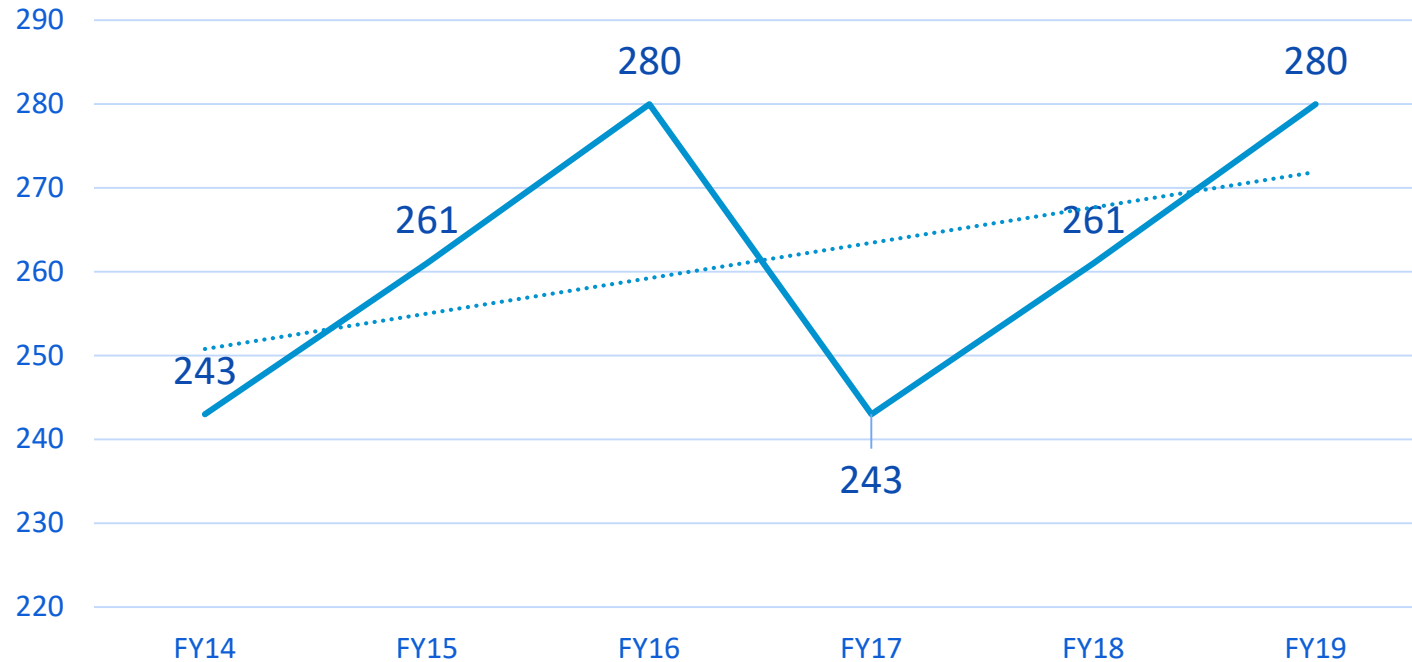


UCSF Research at ZSFG Award Count





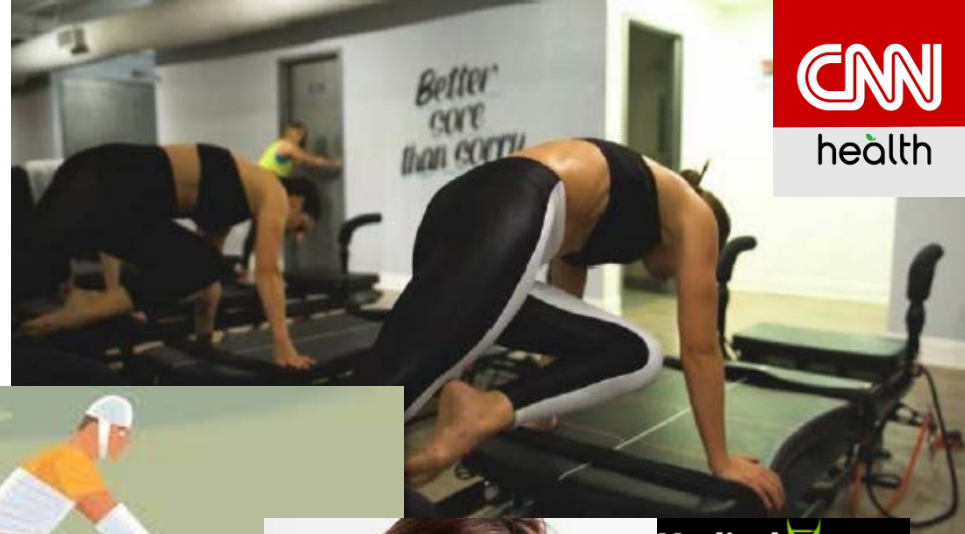
UCSF Principal Investigators at ZSFG



Research In The News



Ben Breyer
Urology



CNN
health



The New York Times



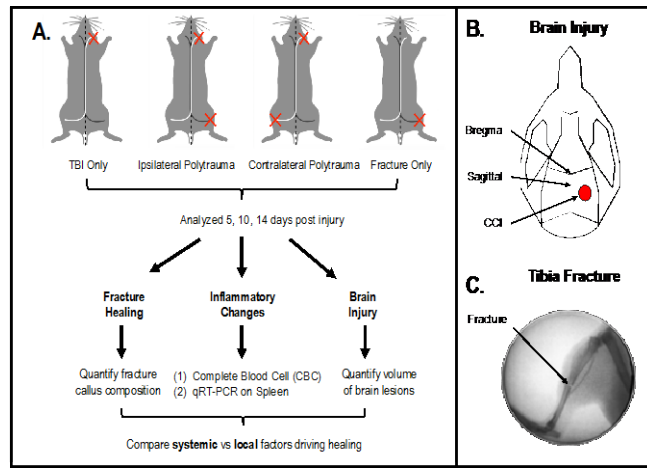
Medical press

JN

Collaboration



Fracture healing with concomitant traumatic brain injury (TBI)



Differential fracture response to traumatic brain injury suggests dominance of neuroinflammatory response in polytrauma

Collaboration: Investigating the use of early, adjunctive linezolid to treat TB meningitis (ALTER)



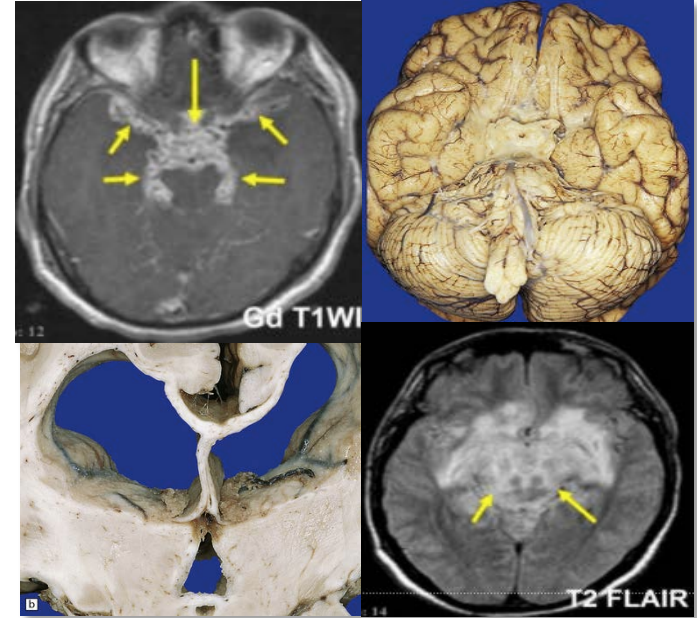
Felicia Chow
Neurology, Neuro-infectious Disease



Payam Nahid
Pulmonary, Critical Care



Rada Savic
Bioengineering, School of Pharmacy



Tuberculosis Research

Phil Hopewell, Pulmonary and Joel Ernst, Experimental Medicine



Research Goal is to provide the mechanistic basis for development of effective vaccines against tuberculosis.



Working with Kenya, Tanzania, India, Indonesia, and Mexico to develop the next implementation phases of the International Standards for Tuberculosis Care (ISTC).

Surgery Research Updates

- Lucy Kornblith, 2019 School of Medicine Perstein Award for Innovative Research. Methodology specific to platelet genomics.
- Amanda Sammann, founded The Better Lab to use design to study and fix healthcare challenges.
- Rachael Calcutt continues to research health services, big data and the use of artificial intelligence to multi-modal data to uncover hidden insights



The Wraparound Project



Focus on Injury Prevention

- San Francisco's Vision Zero SF Injury Prevention Research (VZIPR) Collaborative
- San Francisco Wraparound Project
- Center for Global Surgical Studies
- San Francisco Injury Center for Research and Prevention (SFIC)

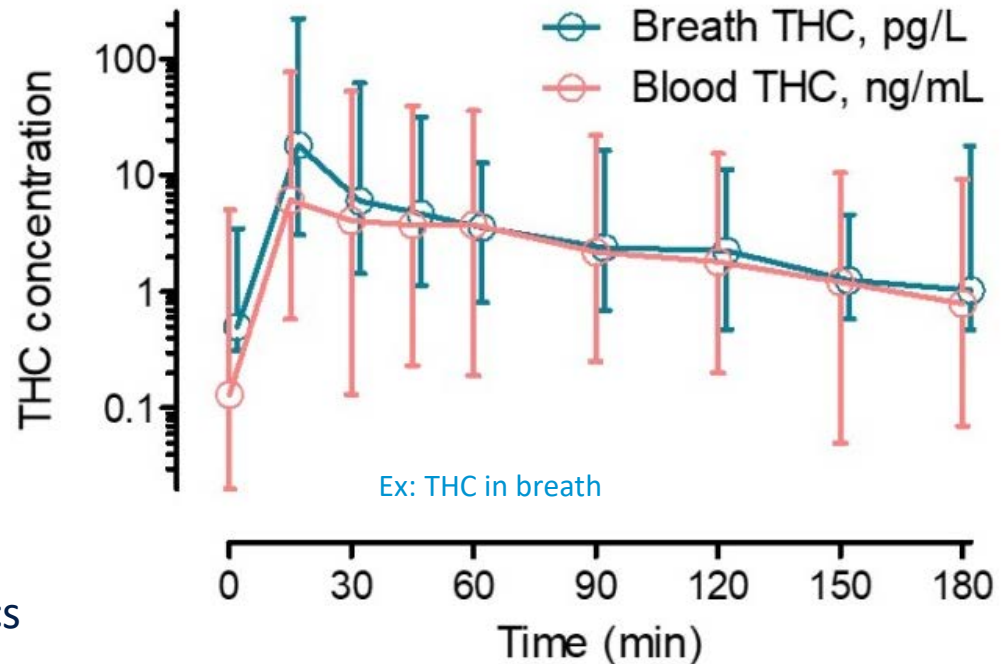
Developing an ultrasensitive method for the quantitation of THC in breath and blood.



Kara Lynch
Lab Medicine



Mass spectrometry: novel diagnostics



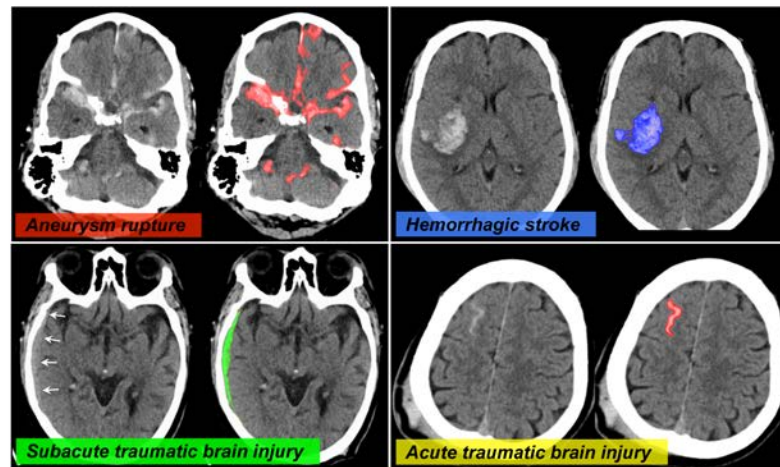
Collaboration: Better imaging for deeper learning

Head CT scans in neurological emergencies



Esther Yuh, Radiology
Geoffrey Manley, Neurosurgery
Claude Hemphill, Neurology

- Immediate diagnosis to enhance care
- Localizing and quantifying features on imaging exams provides granular data for neurological best treatment studies across medical centers

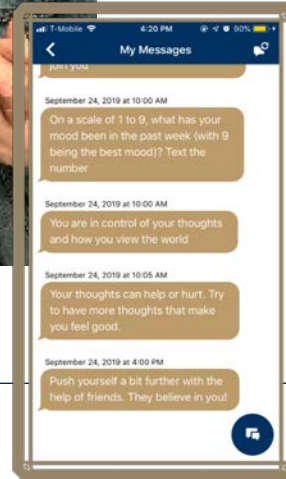




Center for Vulnerable Populations at ZSFG



- Using tools to help people track their health care
- Community mapping platform to remind and measure outcomes for patients with diabetes or prediabetes





Aides in Respiration (AIR) Health Coaching

- Patients living with COPD received health coaching with linkages between 7 SF Health Network primary care sites and specialty care and self-management support.
- Patients with a health coach were more likely to receive guideline-based care than those in usual care, and more likely to take their inhalers and to quit smoking.



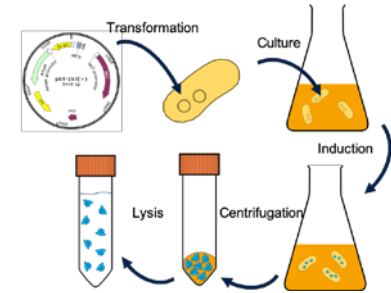
Christine Dehlendorf
Obstetrics, Gynecology & Reproductive Sciences
Family & Community Medicine
Epidemiology & Biostatistics



Recombinant Antibody Display Technology

James Marks, Bin Liu, Eunice Yu Zhou - Anesthesia
Stephen Nishimura - Pathology

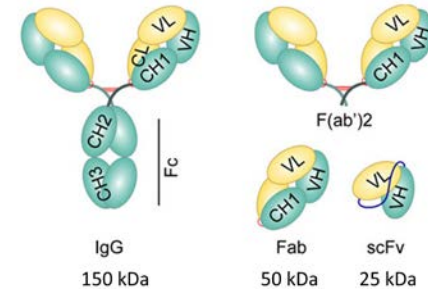
- Diagnosis and treatment of cancer
- Neutralization of protein toxins



Recombinant Antibody Core

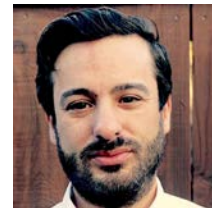
Eunice Yu Zhou – Director

- de novo antibody discovery
- antibody affinity maturation



Increasing mental health literacy and awareness with newcomer immigrant youth

Randomized controlled trial of group-based intervention



William Martinez

Collaboration: interdepartmental, interagency and community

- UCSF Infant, Child and Adolescent Psychiatry at ZSFG
- UCSF Pediatrics at ZSFG
- DPH Children, Youth and Families System of Care
- SF Unified School District



Clinical research to help families with educational models

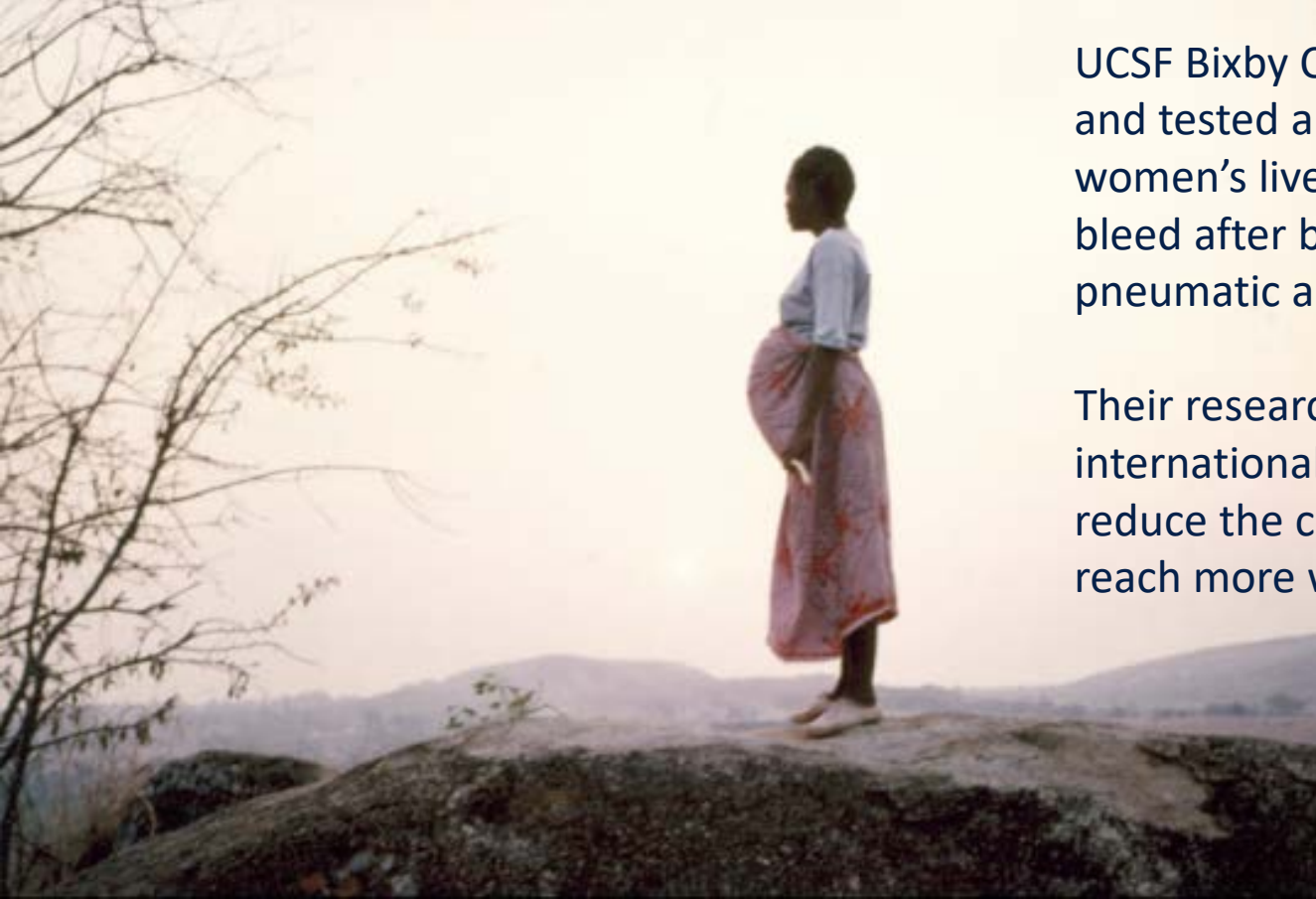
Enhanced Primary Care Nutrition and Screen time Education to Prevent Obesity in Latino Infants



- Information-Motivation-Behavioral Skills model to design educational modules
- Pilot randomized-controlled trial (RCT) to test a yearlong intervention



Amy Beck



UCSF Bixby Center researchers designed and tested a simple tool that saves women's lives when they continue to bleed after birth, called the Non-pneumatic anti-shock garment (NASG).

Their research contributed to an international agreement to significantly reduce the cost of NASGs so they can reach more women in need.



Research improving clinical outcomes

Mayor Breed announcing record low HIV diagnoses (< 200) in San Francisco



HIV Cardiology Clinic at ZSFG

Researching the effects of HIV/AIDS on Cardiovascular Disease and aging populations.

- Teasing out the differences between medication side effects and disease symptoms
- One of the few cardiologists in the country who specializes in HIV



Pricilla Hsue
Cardiology



Emergency Medicine



Renee Hsia

Researching access, pricing and quality metrics for emergency care and trauma centers, specifically for vulnerable populations

- The Impact of Cardiac Care Regionalization on Access, Treatment, and Outcomes
- Emergency care access and quality research metrics

Matilda Chan
Ophthalmology



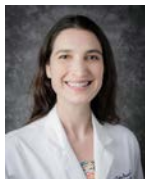
Diagnosis and management of patients with corneal and ocular surface diseases, focusing on understanding the cellular and molecular responses to corneal injury.

Brian Bast
Oral Maxillofacial
Surgery



Facial trauma and minimally invasive surgical techniques.

Marika Russell
Otolaryngology



Disparities, diagnosis and treatment of head and neck cancers.

Research in Residency & Post-Doctoral Programs



Kenji Taylor
Chief Resident
Family Community Medicine

Cut Hypertension Program (CHP)

- African American barbershops become places of health prevention, community building, outreach, and treatment



Paul Ogongo
Post-Doctoral Scholar
Experimental Medicine

- Bill & Melinda Gates Foundation commitment to scientific excellence and contributions to his field
- “Rising Star” scientist for the 2019 Grand Challenges Annual Meeting

- Institutional Review Board (IRB): ZSFG committee
- UCSF Research at ZSFG Protocol Application
- Legacy Data - access to clinical data for research
- UCSF Research and Academic Building at ZSFG

Institutional Review Board (IRB): ZSFG committee



Tom Bersot
Chair

Reviewing human clinical research to meet standards with a focus on underserved populations, HIV disease, trauma, dermatology, pediatrics and neurology.



Kieron Leslie & Jackie Tulsky
Vice Chairs



Elizabeth Mendelsohn
ZSFG Committee Coordinator

UCSF Research at ZSFG Protocol Application

All UCSF research activity conducted at ZSFG requires additional approval after IRB approval for:

- Any interaction with DPH / ZSFG patients, their data, use of DPH / ZSFG personnel, resources, facilities and space.
- Managed by the Dean's Office - Updated approval process

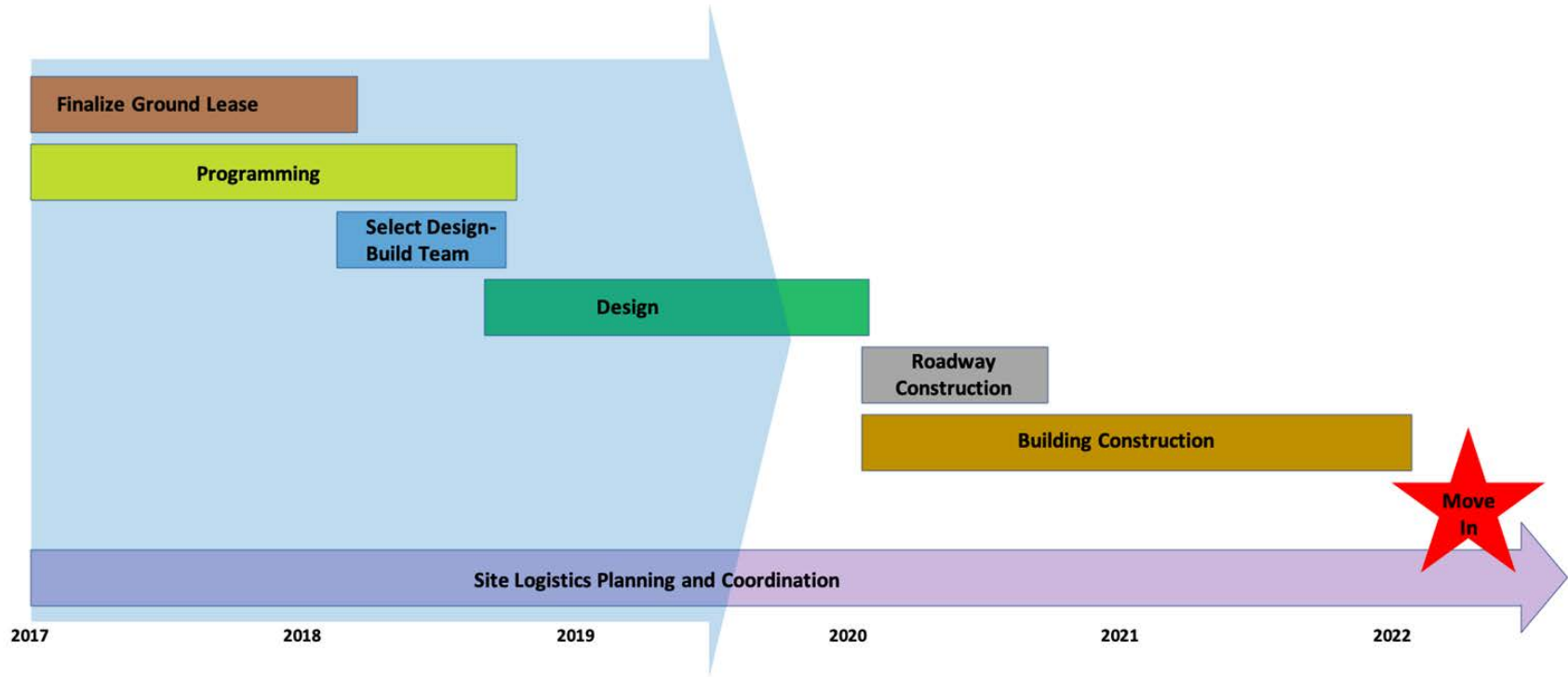
Legacy Research Data Archival

- Extracting data from ICCA, SIS, Pulsecheck for researchers

UCSF Research at ZSFG – Research and Academic Building at ZSFG

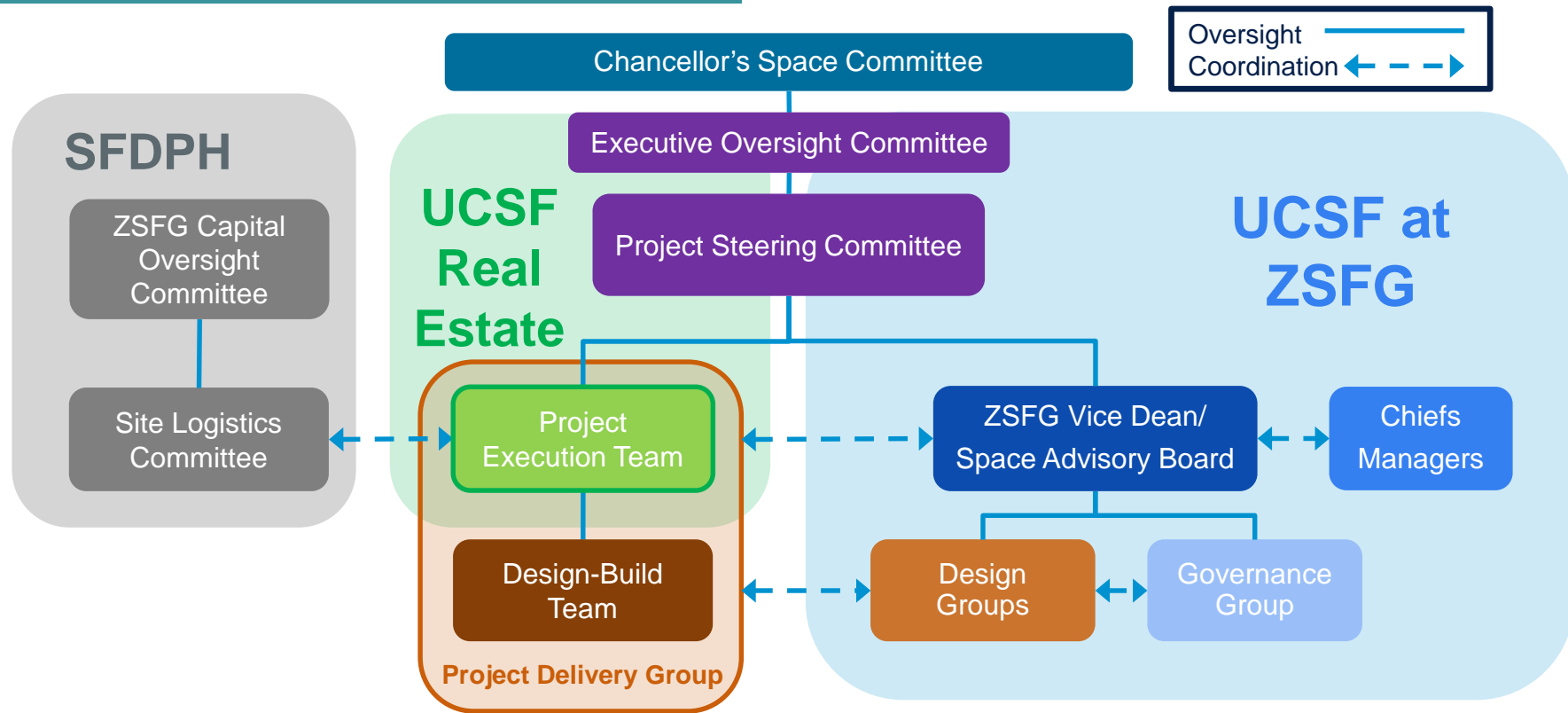


Current Project Timeline



UCSF Research at ZSFG – Research and Academic Building at ZSFG

Project Decision-Making Structure



RAB Leadership

Governance Group

Governance Group Chairs



Ted Miclau
Orthopaedic
Surgery



Laurae Pearson
Medicine

Wet Lab Space

Dry Lab/ Admin

Research Cores

Patient Research

Educational Space

Design Group Chairs



Steve Nishimura
Pathology



Urmimala Sarkar
DGIM



Peter Hunt
Experimental
Medicine



Marina Tolou-Shams
Psychiatry



Diana Coffa
Family & Comm.
Med

Design Group Vice Chairs



**Gideon
St. Helen**
Clinical Pharm



Romain Pirracchio
Anesthesia



Ralph Marcucio
Orthopaedic
Surgery



Rebecca Hoh
HIV, ID, & Global
Medicine



Esther Chen
Emergency
Medicine

UCSF Research at ZSFG – Research and Academic Building at ZSFG



TOWN HALL MEETING

on the UCSF Research and Academic Building at ZSFG

Join us for a review of design progress
and the latest building renderings for
the UCSF Research and Academic
Building at ZSFG project

Thursday, October 24th,
2019

12 –1pm at Carr Auditorium
Brown Bag Session

Hosted by Vice Dean Sue Carlisle and the Project Team

For more information: <https://space.ucsf.edu/zuckerberg-san-francisco-general>



Channels of Communication

Please keep in touch!



Input to the project team:

- Design groups
- Town Halls
- UCSF-RAB-ZSFG@ucsf.edu

Information about the project:

- Monthly ZSFG Dean's Office 1-page update
- Quarterly newsletters
- Quarterly Community Meetings with our neighbors
- Project website: <https://space.ucsf.edu/zuckerberg-san-francisco-general>
- Project FAQs: <https://space.ucsf.edu/ucsf-rab-zsfg-faqs>

Questions?



A photograph of the exterior of the Zuckerberg San Francisco General Hospital and Trauma Center. The image shows a modern multi-story building with a mix of brick and glass facades. In the foreground, there is a landscaped area with a large, abstract stone sculpture. A white van is parked on the right, and a person in blue scrubs is walking. The text 'Thank you' is overlaid in large white letters in the center of the image.

Thank you

ZUCKERBERG SAN FRANCISCO GENERAL
HOSPITAL AND TRAUMA CENTER