

Dean's Seminar

October 2, 2020

2020 State of UCSF Research at ZSFG

Sue Carlisle, PhD, MD
Vice Dean
UCSF School of Medicine Dean's Office
at ZSFG



Agenda

12:05 - 12:10	Welcome, Dean's Seminar Kick-Off
12:10 - 12:15	Overview, numbers
12:15 - 12:45	2020 Research Activity at ZSFG
12:45 – 12:50	UCSF Research and Academic Building at ZSFG
12:50 – 1:00	Questions

Dean's Seminar

The ZSFG Dean's Seminar hosts presentations representing a breadth of research studies in basic sciences, bench-to-bedside, and clinical studies, to encourage research discussions and collaborations that will lead to innovations in medical research and clinical benefit.



Eunice Yu Zhou, Dean's Seminar Director

- First Fridays, 12-1pm plus 30 minutes for questions and networking
- Audience: Members of the research community at ZSFG and those interested in research. To receive notification of Dean's Seminars contact Nancy.Qare@ucsf.edu

UCSF Research at ZSFG: Overview

Essential to Meet the Missions of Both Organizations



Collaborative
Academic
Environment

Innovation
and
Discovery

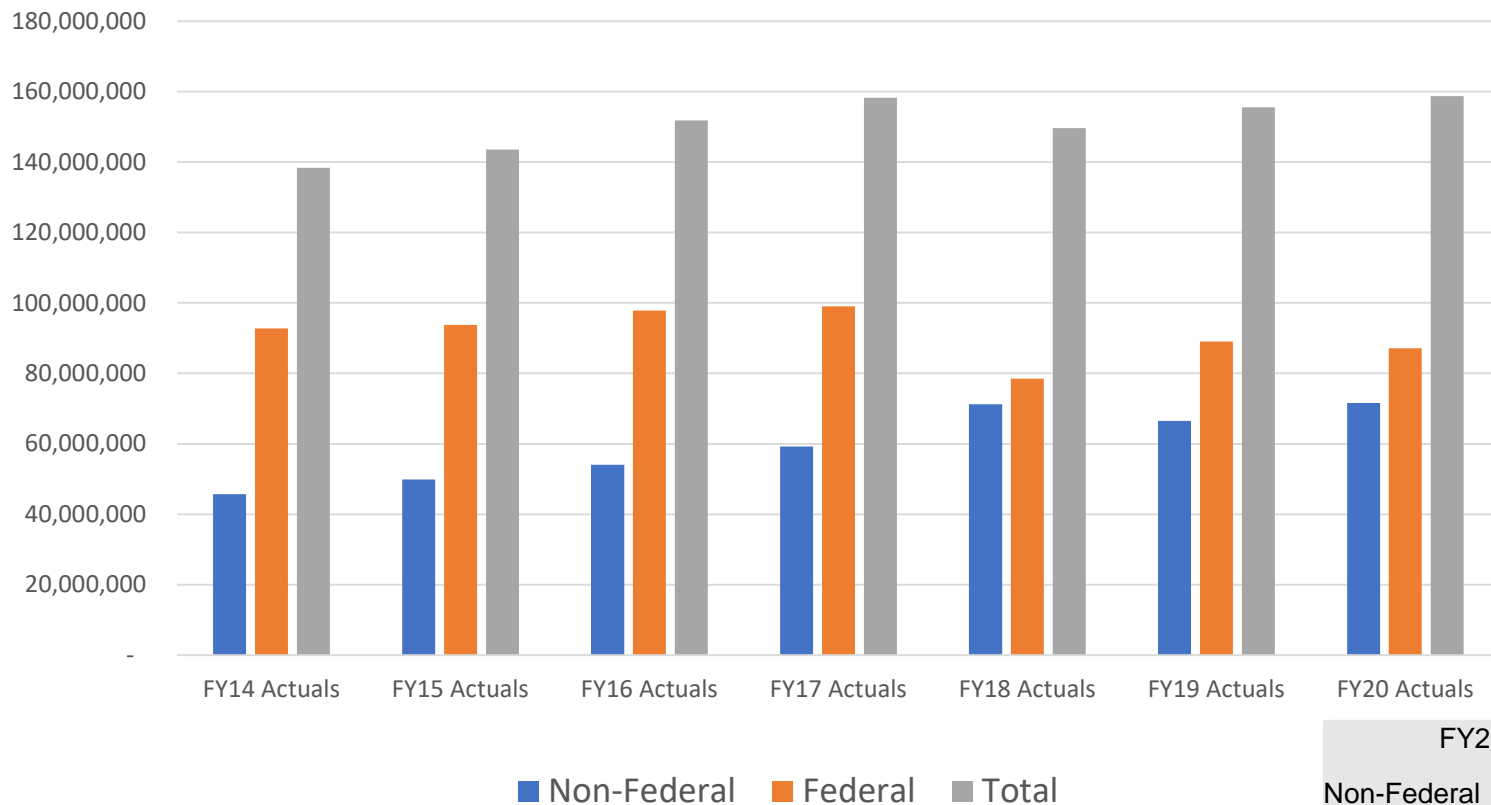


Major
Training Site
for Physician
Scientists

Safety Net
and Level 1
Trauma
Designation

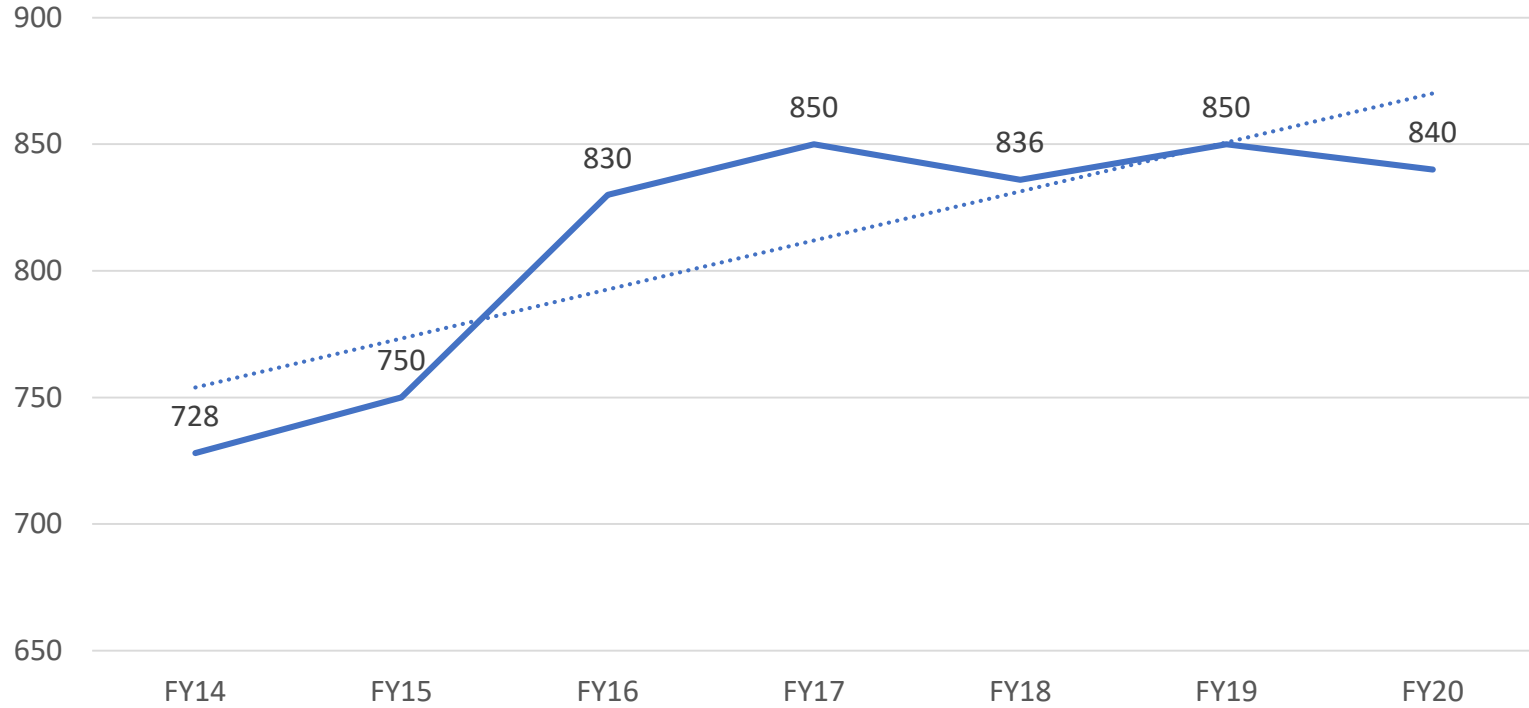


UCSF Research Spending at ZSFG

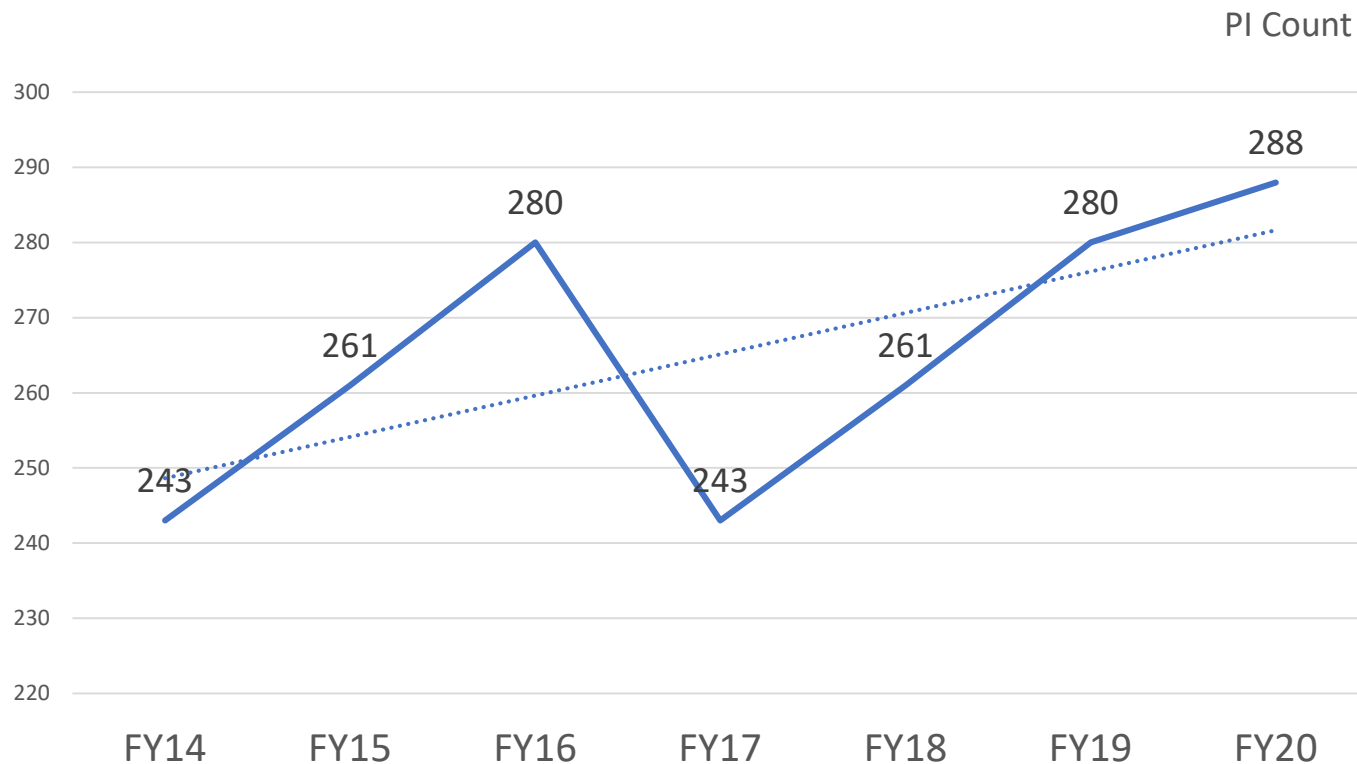


FY20 Actuals	
Non-Federal	\$71,609,795
Federal	\$87,133,884
Total	\$158,743, 678

UCSF Research at ZSFG Number of Awards

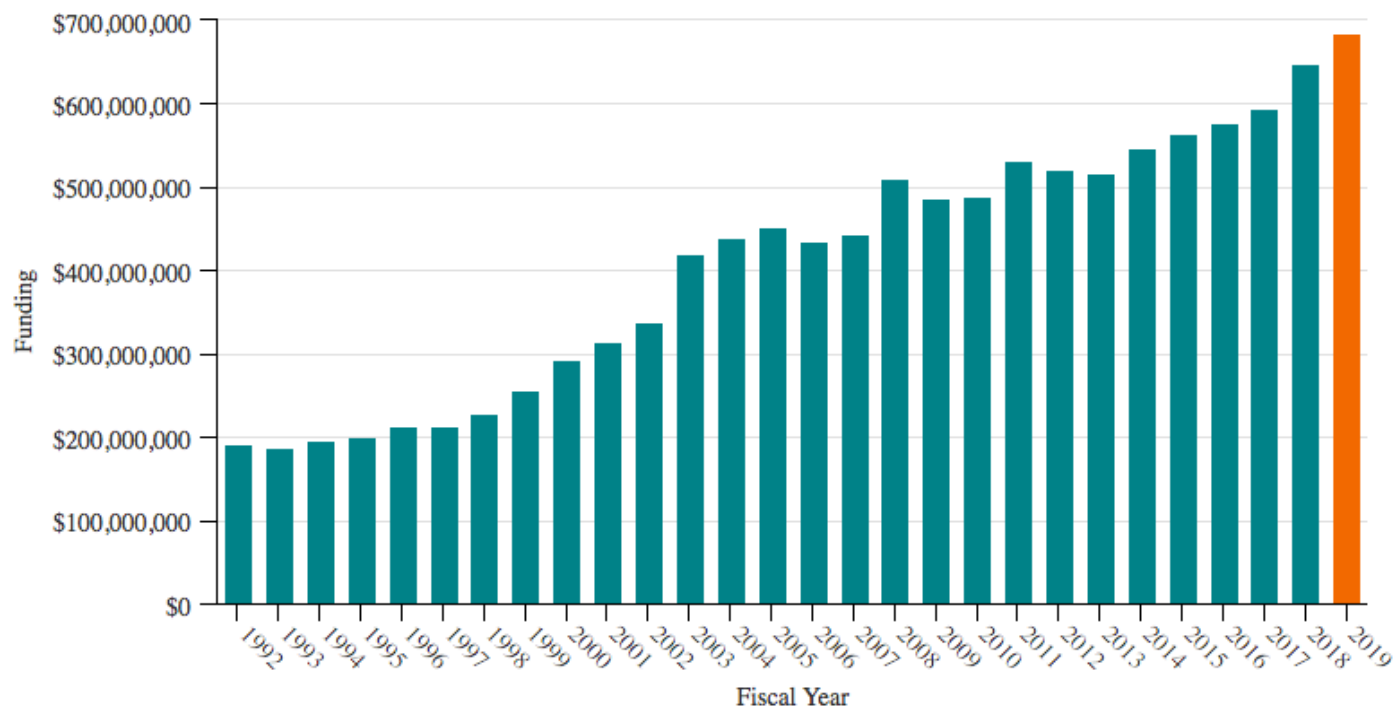


Number of UCSF Principal Investigators at ZSFG

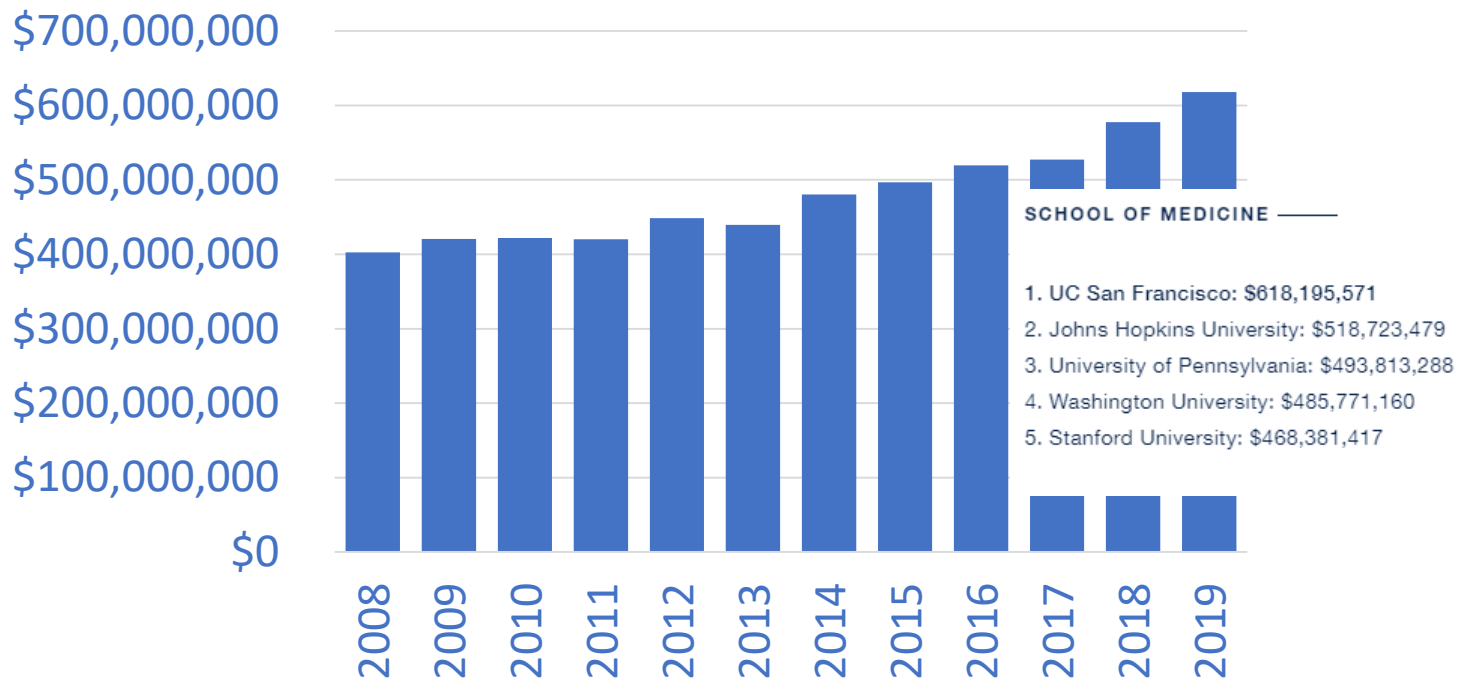


Approximately 600 researchers and research support

UCSF Remains Top Public Recipient of NIH Funding for 13th Straight Year



Ranked #1 for the 8th
Consecutive Year





**SCHOOL OF MEDICINE,
RESEARCH ———**

1. Harvard University
2. Johns Hopkins University
3. University of Pennsylvania
4. New York University
4. Stanford University
- 6. UC San Francisco**
6. Mayo Clinic School of Medicine
6. UC Los Angeles
6. Columbia University
6. Washington University in St. Louis



**SCHOOL OF MEDICINE,
PRIMARY CARE ———**

1. University of North Carolina, Chapel Hill
- 2. UC San Francisco**
2. University of Washington
4. Baylor College of Medicine
5. University of Michigan, Ann Arbor
6. University of Virginia
7. Oregon Health and Science University
7. UC Davis
9. University of Colorado
10. Harvard University



- **7,345** applications received
- **161** students enrolled

2020 Research Activities at ZSFG

The following stories represent a very small sampling of all the amazing research taking place by UCSF researchers at ZSFG.

We reached out to departments, followed media coverage and tried to represent diverse views of research type, publications, how the outcomes affect clinical care at the hospital and at UCSF and what types of collaborations occurred between departments and other institutions.

We do not mean to exclude anyone or their research and hope you and your departments forward information about new developments to my office during the year. I look forward to learning about all of it.

2020 Research Activities at ZSFG

- March 16th: San Francisco's shelter-in-place orders shut down or moved remotely all clinical and laboratory research not involved in COVID-19 research
 - UCSF researchers immediately engage in ground-breaking COVID-19 research across a broad spectrum of topics
- Phases 2 (June) and 3 (September) reopened laboratory-based research, slowly increasing to 50% density in work places
- Offsite and COVID-19 research continues to grow at ZSFG



Unidos en Salud (United In Health): Partnership to improve the health of the community



- Latinx communities hardest hit in San Francisco and California
- Need for **data to drive solutions**– scientific insights, policy and resources
- “Test and Respond” - PCR & antibody testing in Mission census district 6 weeks into shelter in place
- Community-Academic-City partnership
 - UCSF Team (Havlir, Chamie, Marquez, Greenhouse, Gandhi, Kerkhoff, Jain, Peng, Martinez, Black, Cox, Sergi)
 - UC Berkeley (Petersen)
 - Chan-Zuckerberg Biohub (Derisi)
 - Latino Task Force on COVID-19
 - Ward 86 and ZSFG
 - San Francisco Department of Public Health
 - Office of Hillary Ronen



CHART Study



- **3-Site Study of COVID-19 Immunity in Healthcare workers** (ZSFG, UCSFHealth, Stanford), ZSFG PI: Vivek Jain
- Enrolling up to 1,000 healthcare workers/site
- Nasal swab for RT-PCR over 3 months, phlebotomy for serology over 6 months
- Detailed characterization of immune responses of any COVID-19 positive HCW's; tight linkage with occupational health



Track COVID

- People who have tested negative for COVID-19 and live in one of the following counties: Santa Clara, San Mateo, Alameda, Marin, Contra Costa, San Francisco. ZSFG site lead, Kevin Grumbach



Emergency



Project COVERED (**C**ovid **E**valuation of **R**isk in **E**mergency **D**epartments)

PIs involved: Robert Rodriguez, Juan Carlos Montoy

- Prospective longitudinal study of Emergency Department doctors, nurses, and non-clinical staff designed to identify the job-related risk of developing Covid-19 infection
- Participants tested using PCR and serology every four weeks and conduct weekly surveys to report risks of exposure.
- Results to help improve Covid-19-related protocols to decrease the risks posed to ED health care workers

Interdepartmental relationships related to the work: Laboratory Medicine



Medicine

The Clinical Trial Leader
Searching for the Silver Bullet

Therapeutic Agents

- NIH-funded international trial of remdesivir, to speed up recovery time for COVID-19, PI: Annie Luetkemeyer
- Convalescent plasma from people who recovered from COVID, transfused into patients to speed recovery or stabilize, PIs: Annie Luetkemeyer, Jonathan Esensten
- Monoclonal antibodies studies designed for COVID, PI: Annie Luetkemeyer
- Randomized, Double-blind, Placebo-controlled Trial to Evaluate the Efficacy of Hydroxychloroquine and Azithromycin to Prevent Hospitalization or Death in Persons with COVID-19, PI: Annie Luetkemeyer
- Evaluate the Efficacy of Canakinamab in Hospitalized COVID-19 patients; Collaboration with Novartis; PI: Priscilla Hsue, Annie Luetkemeyer





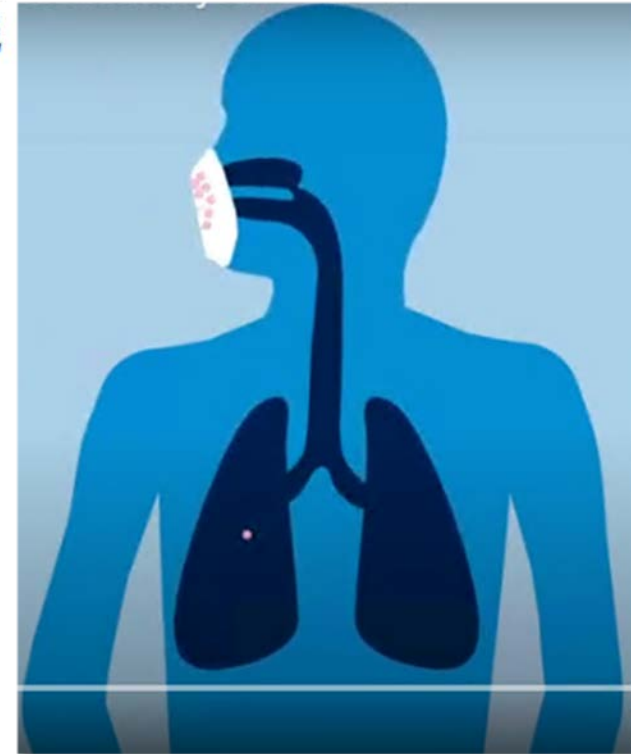
The NEW ENGLAND JOURNAL of MEDICINE

Facial Masking for Covid-19 – Potential for “Variolation” as We Await a Vaccine. PIs: Monica Gandhi, George Rutherford

- Masks can lead to milder or asymptomatic infections by cutting down on the dose of virus people take in.

“The more virus you get into your body, the more sick you are likely to get”

- Monica Gandhi



Impact of COVID-19 on Vulnerable Populations: Psychiatry, Epidemiology & Biostatistics, Institute for Health Policy Studies, OB/GYN and RS

PI: Christina Mangurian, Co-Is: Alison Hwang, Chuan Mei Lee, Marilyn Thomas, Paul Wesson, Amanda Yeaton-Massey

- PReMIUM (Program of Research on Mental Health Integration among Underserved and Minority Populations) Geocoding Project
- Examines how COVID-19 impacts health outcomes for people with serious mental illness, HIV/AIDS, and depression served at ZSFG, SFHN, and UCSF Health
- Geocode patient addresses to link to census, administrative and geospatial data to identify relationships between neighborhood and health, targeting "hotspots" for future interventions
- Compare neighborhood contexts, food environments, walkability, demographic setting (high poverty area, residential segregation) with clinical information (COVID-19 testing and results, rates of HIV/AIDS, serious mental illness, adolescent and postpartum depression)



LIINC



Long-term Impact of
Infection with Novel
Coronavirus

- The **Long-term Impact of Infection with Novel Coronavirus (LIINC)** study is a collaboration of UC researchers studying adults who tested positive for COVID-19 to understand changes after recovery from the virus. PI: Steven Deeks, Co-PIs: Michael Peluso, LIINC Clinical Lead, Isabel Rodriguez-Barraquer, Epidemiology
 - LIINC connects researchers across UCSF and the United States with the goal of understanding the immune response to the virus and how it affects a person's body during recovery.



- CNS LIINC: Coronavirus Neurocognitive Study, a neurologic sub-study of the Long-term Impact of Infection with Coronavirus Study (LIINC) PI: Michael Peluso, Joanna Hellmuth, Meredith Greene, Felicia Chow



UCSF Obstetrics Gynecology and Reproductive Sciences

Reproductive Health Impacts of the pandemic / shelter-in-place on:

- Economic wellbeing, undesired pregnancy (Diana Greene-Foster)
- Pregnancy decision making (Corinne Rocca; Jennifer Kerns, Nadia Diamond-Smith)
- Abortion services, quality and outcomes, and maternity care, quality and outcomes (Sarah CM Roberts; Jennifer Kerns, Nadia Diamond-Smith)
- Clinical care challenges (Carole Joffe)
- Clinicians' beliefs about care innovations (Jennifer Karlin, Jody Steinauer)
- Student access to health care in their colleges (Cynthia Harper)

New models of family planning care:

- Telemedicine for medication abortion (Ushma Upadhyay)

Contact Tracing and Education (CAPTC)
COVID19 Viral Research (U Zimbabwe)



Clinical Labs

Laboratory/Diagnostics

- **RT-PCR methods:** quantitative characteristics, dynamics, correlation to clinical features
- **Rapid diagnostic tests:** characteristics
- **Serology studies:** titers, dynamics, characteristics, durability, correlation to clinical features
- Collaborations with Kara Lynch, Barbara Haller, Phong Pham, Jeff Whitman, and members of the ZSFG clinical and microbiology laboratories

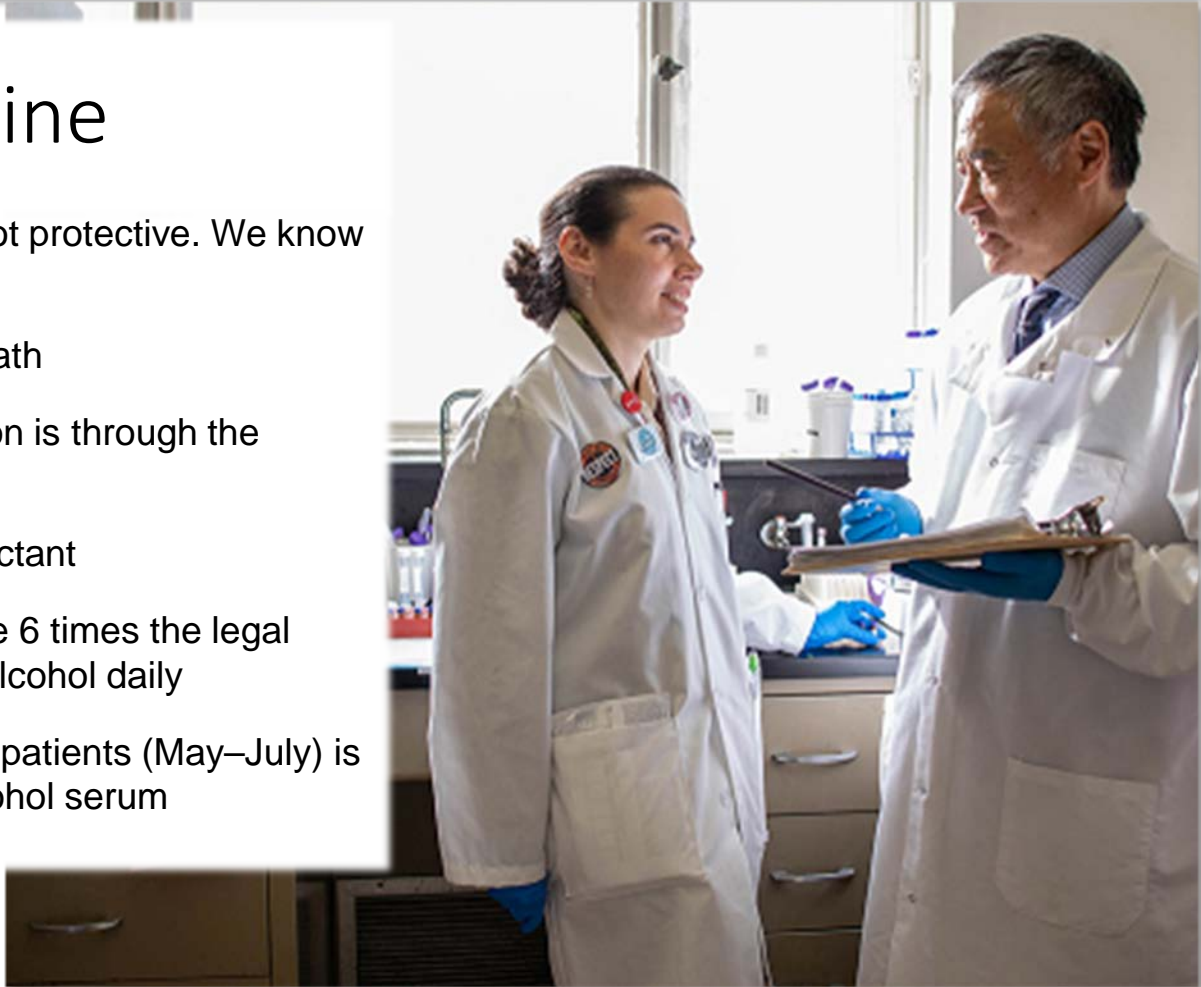


Laboratory Medicine

PI: Alan Wu. Chronic alcohol use is not protective. We know that:

1. Alcohol is expressed in breath
2. The route of COVID infection is through the respiratory track
3. Alcohol is used as a disinfectant
4. Chronic alcoholics can have 6 times the legal driving limit and likely use alcohol daily

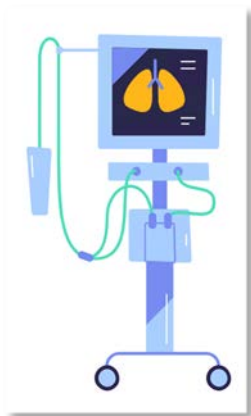
COVID infection incidence rate of ED patients (May–July) is the same for individuals with high alcohol serum measurements.



Anesthesia

Decoding Injury: First perioperative biobank focused on underserved populations, PIs: Roland Bainton, Arun Prakash, Philip Kurien

- Emergency Department, Trauma Surgery, and Anesthesia exploring the effect of Coronavirus on dynamic platelet-endothelial interactions



Covid-19 Critical Care Response Project: Sustaining Technical and Analytic Resources (STAR) Project. PIs: Michael Lipnick, Adrian Gelb

- Leverage clinical knowledge and tools gained during COVID-19 surge and response
- Improve critical care, especially related to oxygen supply and delivery, in low and middle-income countries (LMICs) as part of USAID
- USAID-funded, collaboration with UCSF Anesthesia Division of Global Health Equity and the World Federation of Societies of Anesthesiologists (WFSA)



Center for Cerebrovascular Research (CCR): coronavirus pandemic impact on people with rare diseases and their families. Leadership: Helen Kim, Hua Su



Dermatology



In Vivo Cost Minimization Analysis of a Teledermatology Triage System in a Safety Net Hospital, PI: Erin Amerson; Co-I: Kieron Leslie

Compared organization-wide cost of managing new dermatology referrals within a TD triage system and conventional dermatology care model at ZSFG

Pre-post cost minimization analysis estimates the ZSFG teledermatology e-consult triage service saves health system \$140.12 per newly referred dermatology patient, or \$441,378 annually.



Emergency

Project FRIEND (First Responder Increased Education and Naloxone Distribution) Pls: Kathy LeSaint, MD, Mary Mercer, MD, MPH, FAEMS



- Increase naloxone utilization in San Francisco by training first responders to provide and distribute life-saving naloxone
- Team trained EMTs and paramedics to identify patients and bystanders at risk of experiencing or witnessing an overdose and teach them how to administer naloxone.
- Project FRIEND has distributed over 1,200 naloxone kits.



Family and Community Medicine

Researching At-Risk Populations to understand how to help people help themselves

- **AIR Study:** Can health coaching improve guideline-based prescribing, adherence to inhalers, and patient technique for urban, underserved patients in a safety net setting?
- **Reaching for Equity in Sleep Apnea Treatment (REST):** Can health coaching improve adherence to PAP therapy in low-income, publicly insured, largely ethnic or racial minority populations



- **Social Interventions Research and Evaluation Network (SIREN):** Health Care-Based Social Risk Screening, a national research catalysis and dissemination initiative housed at UCSF and funded by Kaiser Permanente and RWJF. PIs: Laura Gottlieb, Nancy Adler, Caroline Fichtenberg
- Primary care practice transformation, including dissemination and testing of the Building Blocks of High Performing Primary Care
- Impact of EHRs on primary care practice
- Health care provider burnout
- Community-based health coaching in barbershops



Medicine: Division of General Internal Medicine

Ensuring Equity in Telehealth at SFHN and sister safety net institutions. PIs: Courtney Lyles, Malini Nijagal, Collaborators: Elaine Khoong, George Su, Misa Perron-Burdick, Delphine Tuot, Triveni Defries, Urmimala Sarkar, Anjana Sharma

- Implement and evaluate telehealth for ZSFG 5M prenatal patients
- In March 2020, quickly shifted to support all SFHN patients and providers with telehealth, including collating telehealth care delivery resources through an online resource
- Added provider survey at SFHN and remote qualitative interviews with SFHN patients (in English, Spanish, and Cantonese) to understand in real-time the barriers for launching telehealth care in our delivery system.



Food Insecurities Studies, PIs: Hilary Seligman, Dean Schillinger



CVP

Center for Vulnerable Populations
at Zuckerberg San Francisco General Hospital
and Trauma Center



Medicine: Division of Experimental Medicine

Evaluate antibody tests for COVID-19, assure accurate test results

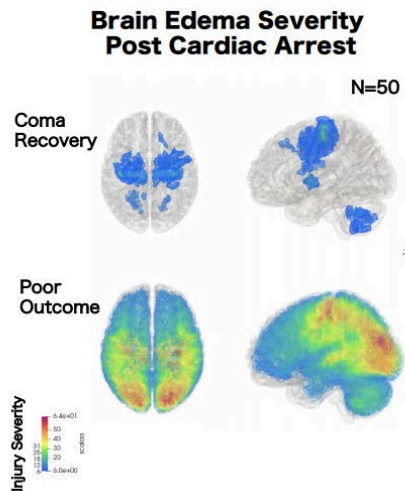
- Set up appropriately contained space for handling serum samples from patients with confirmed COVID-19 and provided equipment and support for the 16+ hour/day effort to provide clear information on the accuracy of the tests, as rapidly as possible.
Collaborated with Jeff Whitman, Alex Marson
- Antibody test evaluations results published in Nature Biotechnology, by coauthors: Vanessa York, Alex Eskandarian, Perri Callaway, Lakshmi Warriar, Mary Beth Moreno, Justine Levan, Leonel Torres, Lila Farrington, and Joel Ernst.
- DEM pivoted to COVID-19 but continues to study HIV, Malaria, and Tuberculosis.



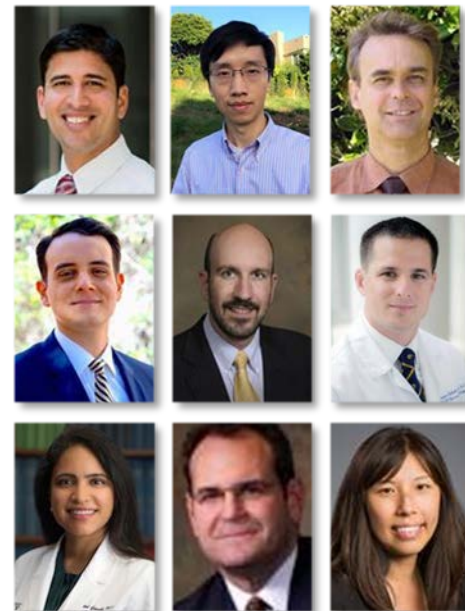
Neurology, Neurosurgery, Radiology

Improving clinical outcome after stroke and TBI

- Computational genomic tools and newly developed gene editing methods to identify new potential drug targets to help brain cells survive injury such as stroke or trauma. PIs: Neel Singhal, Dengke Ma, Raymond Swanson



- Brain Edema in Cardiac Arrest Coma: Neuroanatomical basis of brain injury in overdose-related cardiac arrest and how optimizing brain perfusion might prevent brain edema development. PIs: Ed Amorim, Claude Hemphill, Jason Talbott, Shital Gandhi
- Seizures in TBI and Cardiac Arrest: Which EEG signatures predict coma recovery and whether intervening in epileptiform activity can accelerate recovery and prevent epilepsy. PIs: Ed Amorim, Claude Hemphill, Geoffrey Manley
- Can mindfulness training help to reduce stroke risk in people with HIV? Examining the link between different forms of stress (e.g., perceived stress, PTSD, stigma) and stroke risk and arterial inflammation using PET-CT in people with HIV. PI: Felicia Chow



Neurology, Neurosurgery, Radiology

In collaboration with expert public-private partners, collecting and analyzing detailed clinical data on subjects at 18 U.S. sites, across the injury spectrum, along with CT/MRI imaging, blood biospecimens, and detailed clinical outcomes.

JAMA Neurology | Original Investigation

Recovery After Mild Traumatic Brain Injury in Patients Presenting to US Level I Trauma Centers A Transforming Research and Clinical Knowledge in Traumatic Brain Injury (TRACK-TBI) Study

Lindsay D. Nelson, PhD; Nancy R. Temkin, PhD; Sureyya Dikmen, PhD; Jason Barber, MS; Joseph T. Giacino, PhD; Esther Yuh, MD, PhD; Harvey Levin, PhD; Michael A. McCrea, PhD; Murray B. Stein, MD, MPH; Pratik Mukherjee, MD, PhD; David O. Okonkwo, MD, PhD; Ramon Diaz-Arnesta, MD, PhD; Geoffrey T. Manley, MD, PhD, and the TRACK-TBI Investigators

JAMA Psychiatry | Original Investigation

Risk of Posttraumatic Stress Disorder and Major Depression in Civilian Patients After Mild Traumatic Brain Injury A TRACK-TBI Study

Murray B. Stein, MD, MPH; Sonja Jain, PhD; Joseph T. Giacino, PhD; Harvey Levin, PhD; Sureyya Dikmen, PhD; Lindsay D. Nelson, PhD; Mary J. Vasar, RN, MS; David O. Okonkwo, MD, PhD; Ramon Diaz-Arnesta, MD, PhD; Claudia S. Robertson, MD; Pratik Mukherjee, MD, PhD; Michael McCrea, PhD; Christine L. Mac Donald, PhD; John H. Yue, MD; Esther Yuh, MD, PhD; Xiaoying Sun, MS; Laura Campbell-Sills, PhD; Nancy Temkin, PhD; Geoffrey T. Manley, MD, PhD, and the TRACK-TBI Investigators

JAMA
Network | Open.

Original Investigation | Emergency Medicine

Assessment of Follow-up Care After Emergency Department Presentation for Mild Traumatic Brain Injury and Concussion Results From the TRACK-TBI Study

Seetha A. Sathyan, PhD; Etienne Gaudette, PhD; David P. Goldman, PhD; Amy J. Markowitz, JD; Jordan Brooks, BA; Michael A. McCrea, PhD; David O. Okonkwo, MD, PhD; Geoffrey T. Manley, MD, PhD, and the TRACK-TBI Investigators



Michael Beattie, Jacqueline Bresnahan, Sanjay Dhall, Geoffrey Manley, Adam Ferguson, Jenny Haefeli, Jialing Liu, Susanna Rosi, Scott Panter

Orthopaedic Surgery

Intramedullary Nailing Versus External Fixation in the Treatment of Open Tibial Fractures in Tanzania: Results of a Randomized Clinical Trial

PIs: Saam Morshed, David Shearer



Culmination of 8 years of academic partnership and research capacity building at the Muhimbili Orthopaedic Institute (MOI) in Dar es Salaam, TZ made possible through OTI's global outreach initiative, IGOT.

- First RCT assessing intramedullary nailing vs. external fixation for the treatment of open tibial fractures in sub-Saharan Africa
- 240 adults with acute diaphyseal open tibial fractures were randomly assigned to statically locked, hand-reamed intramedullary nailing or uniplanar external fixation.
- Primary outcome was death or reoperation for the treatment of deep infection, nonunion, or malalignment. Differences in primary events not detected. Only coronal alignment significantly favored the use of intramedullary nailing.
- OTI also working on multinational study to look at the global burden of orthopaedic trauma

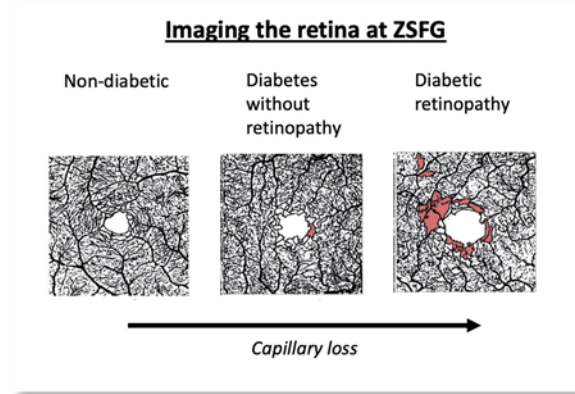
Ophthalmology

Diabetic retinopathy pathogenesis and novel treatment targets. Identify signatures on retinal imaging to facilitate better screening and early interventions; contribution of inflammation to disease progression; new targets for treatment. PI: Jay Stewart

- High rate of diabetic retinopathy at ZSFG, demographic formally unrepresented in research
- Novel non-invasive imaging shows early retinal capillary loss in diabetes
- Biobank of ocular fluids enables numerous published studies on cytokine dysregulation in diabetic retinopathy.

Regulation of Corneal Repair by Metalloproteinases. PI: Matilda Chan

- Affect of MMP12 (macrophage metalloelastase) on ocular injury and wound healing. MMP12 expressed in corneas and has a protective effect on corneal fibrosis during wound repair



Pediatrics

Patient safety issues, preventing interpersonal violence, improving population health, nutritional and educational interventions, asthma in underserved populations

California Teen Vaping Patterns During and After COVID-19 Pandemic Shelter-in-Place Orders, retrospective and prospective study of teen vaping behavior during the COVID-19 shelter in place orders and subsequent re-opening of California schools. PI: Valerie Gribben

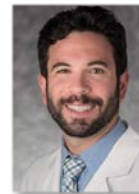
- Understand the present teen mindset and habits regarding vaping in relation to COVID-19 to improve cessation and preventative interventions for teenagers.

Reducing Second-Hand Smoke Exposure for Infants in the NICU/Nursery, supporting families at risk for smoke exposure during postpartum hospital stay, 50-80% of mothers who stop smoking during pregnancy relapse after childbirth. UCSF medical student-run study.

Elena Fuentes-Afflick, Shonul Jain, Heather Briscoe



Otolaryngology

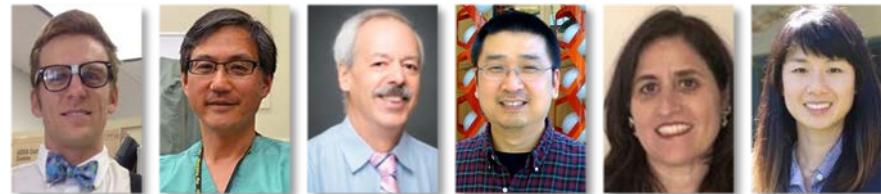


Feasibility and Efficacy of an Otolaryngology-Head and Neck Surgery Telemedicine, Program in an Economically Disadvantaged and Racially Diverse Population. PI: Jeffrey Sharon, Co-Is: Joseph Kidane, Eric K. Kim

- Evaluate the feasibility of OHNS telemedicine care in an economically disadvantaged and racially diverse patient population (e.g., unstably housed, non-English speaking, and racial minorities)
- Assess the effectiveness of telemedicine
- Perform cost-benefit analysis to determine whether telehealth provides cost savings for the patients and the institution.

Anatomic Pathology

Global teaching and intervention presence, basic science, antibody libraries, translational research program



Building translational research program bringing cutting edge molecular techniques to cytology specimens to improve diagnosis of both solid tumors and hematolymphoid malignancies, PI: Joshua Menke

Using structural biologic approaches to understand basic immune mechanisms underlying fibrosis and tumor immune evasion. Co-developed the first monoclonal inhibitory antibody to an integrin that participates in organ fibrosis. PIs: Stephen Nishimura, Jim Marks, Yifan Cheng and Jody Baron



MUHAS, Dar es Salaam, Tanzania

Bringing research to translational academic and research program, Muhimbili University of Health and Allied Sciences in Dar es Salaam (MUHAS), Tanzania, Dianna Ng

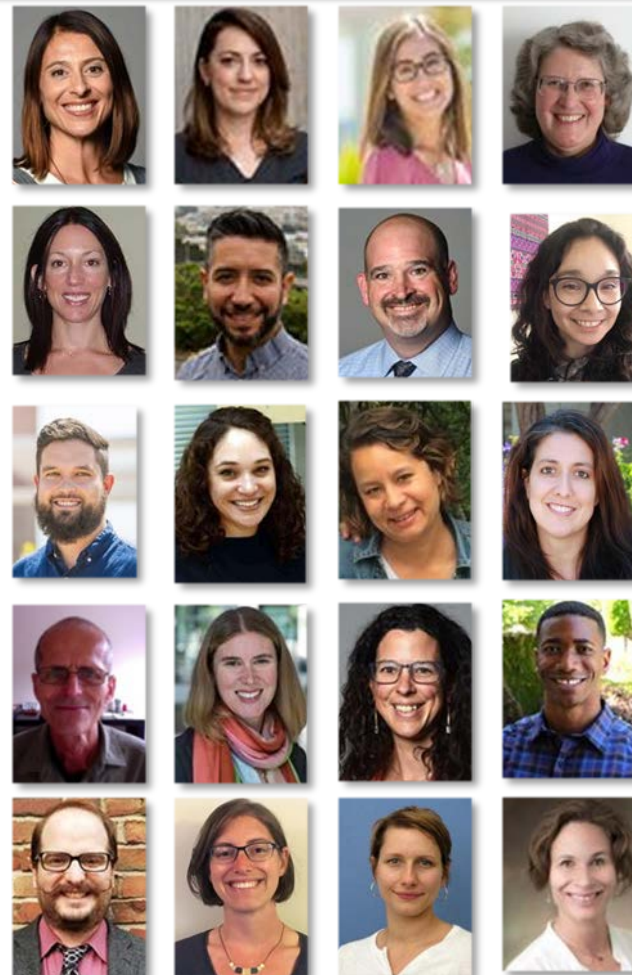
Psychiatry

Leveraging technology & trauma-informed approaches to increase access to child and family behavioral health care. PIs: Marina Tolou-Shams, Co-I's: Emily Dauria, Johanna Folk, Martha Shumway, Juliet Yonek, Adrian Aguilera, Brian Borsari, Margareth Del Cid, Evan Holloway, Kathryn Margolis, Barbara Stuart

Medicaid-DASH: Using Medicaid data to advance care for people with schizophrenia at risk for HIV. Examines HIV care continuum for people with schizophrenia in the public healthcare system. PI: Christina Mangurian, Co-Is: Eric Vittinghoff, Emily Arnold, Kim Koester, James Dilley, Stephen Crystal, Jamie Walkup, Paul Wesson, Marilyn Thomas



Medication treatment for Opioid use disorder in expectant Mothers (MOMs)
PIs: D. Andrew Tompkins, Co-Is: Dominika Seidman, Misa Perron-Burdick, Heather Briscoe



Surgery

The Study of Activation of Coagulation & Inflammation for Elucidating Precision Approaches to Resuscitation in Trauma (ACIT PART III), PIs: Lucy Kornblith, Rachael Callcut, Carolyn Hendrickson, Roland Bainton

Freeze Dried Platelet Extracellular Vesicles as a Hemostatic Adjunct to Resuscitation for Prolonged Field Care, PI: Lucy Kornblith

Co-ACIT: COVID-19 Associated Coagulopathy, Inflammation, and Thrombosis. PIs: Lucy Kornblith, Aaron Kornblith, Christopher Colwell, Lauren Chalwell, Judith Hellman, Carolyn Hendrickson, Robert Rodriguez, Philip Kurien, Roland Bainton, Matthieu Legrand, Juan Carlos Montoy, Arun Prakash

Multicenter, Adaptive, Randomized, Controlled Platform Trial of the Safety and Efficacy of Antithrombotic Strategies in Hospitalized Adults with COVID-19 (ACTIVE-4 ACUTE), PIs: Lucy Kornblith, Peggy Knudson, Carolyn Hendrickson

Phase 2b, Randomized, Double-blind, Placebo-controlled, Multi-center Clinical Trial of Allogeneic Bone Marrow-Derived Human Mesenchymal Stromal Cells for the Treatment of Acute Respiratory Distress Syndrome. PIs: Carolyn Hendrickson, Lucy Kornblith, Michael Matthey

The DISTANCE Study: Discovering the Impact of Social-Distancing on Trauma Epidemiology and Resources during the COVID-19 Epidemic, PI: Lucy Kornblith, Aaron Kornblith, Deborah Stein

Defining Outcomes after Ultra-Massive Transfusion in the Modern Era of Balanced and goal Directed Resuscitation, PIs: Lucy Kornblith, Rachael Callcut



Urology

Electric Scooter Injuries and Hospital Admissions in the United States, 2014-2018. Documented high prevalence of head injuries among scooter users and rise in the injuries/admissions. PI: Benjamin Breyer



32% of e-scooter injuries involved the head



The most common injuries were fractures (27%), contusions and abrasions (23%), and lacerations (14%)

In 2018, e-scooter injuries and hospital admission increased by 222% and 365%



People aged 18-34 became the most injured age group, increasing in proportion by 185%



Occupants Website

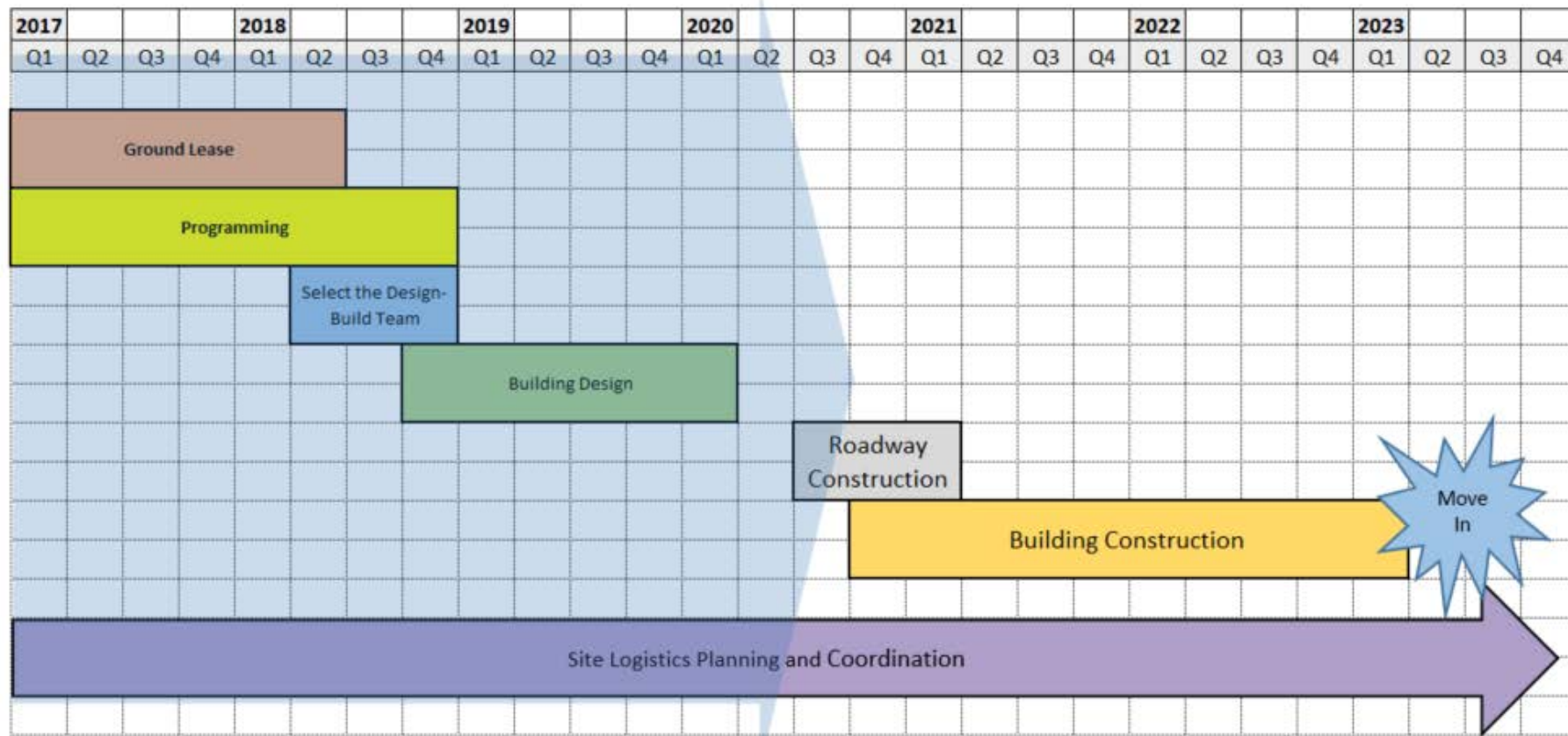
- The Dean's Office has created a new website for future occupants at <https://rabzsfg.ucsf.edu>. The site is set behind MyAccess and will trigger login, the website can be accessed directly in MyAccess applications ★ [ZSFG RAB Website for Occupants](https://rabzsfg.ucsf.edu)
 - The site contains links to construction updates, project information, FAQs, and communications including the latest newsletters, Town Halls, and more!

Governance Committee

- Prioritizing governance areas of focus list
- Reviewing and finalizing furniture for the dry lab and administrative workstations



Construction Timeline



Drive-through
COVID-19 testing on
the building site



UCSF Research at ZSFG – Research and Academic Building at ZSFG



Questions?



A wide-angle photograph of the exterior of the Zuckerberg San Francisco General Hospital and Trauma Center. The image shows a large, modern medical building with a curved facade and extensive glass windows. In the foreground, there is a landscaped area with a large, abstract sculpture made of many small, rounded, grey stone-like pieces. A white van is parked on the right side of the road, and a person in blue scrubs is walking towards the right. The sky is overcast.

Thank you

ZUCKERBERG SAN FRANCISCO GENERAL
HOSPITAL AND TRAUMA CENTER