

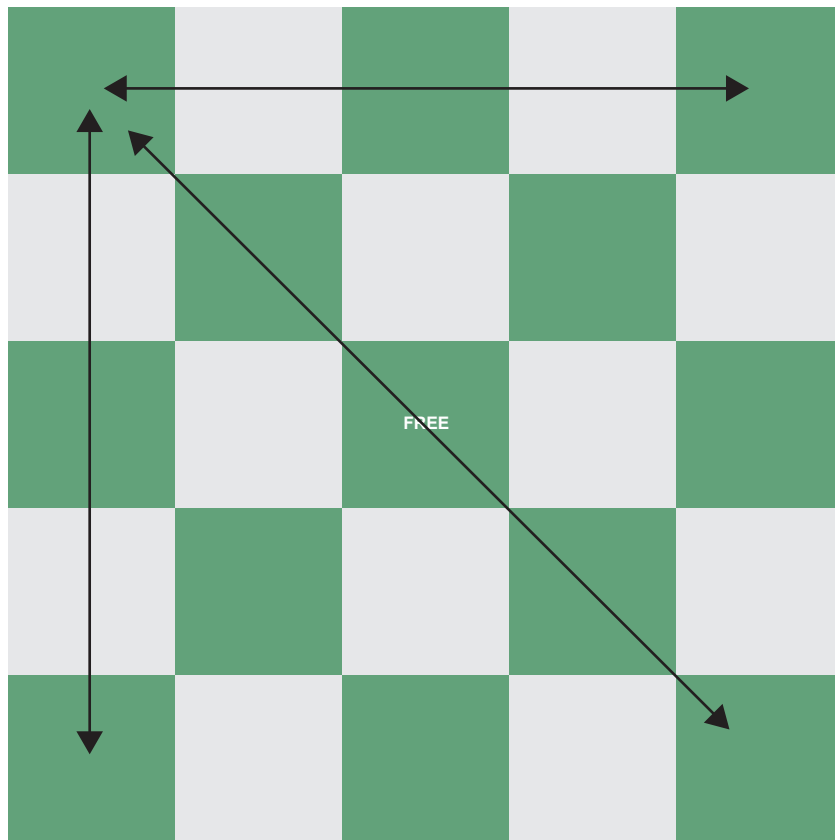
Community Science Bingo

GUIDELINES

Looking for ways to keep yourself busy this winter? Host your own Community Science Bingo Challenge with your friends and family! Print or send our Bingo Cards to whoever you'd like to include in the challenge and set a timeframe to play. It could be a single day, a weekend, or over the course of a month – you decide! This is your chance to build on your invasive and native species knowledge, make an impact right from your home AND win bragging rights amongst your family and friends. Who doesn't love a little friendly competition?

DIRECTIONS

Complete as many Bingo activities or reporting requirements as you can. There are 5 vertical rows, 5 horizontal rows and 2 diagonal rows. For each activity/report you complete, you get to check off the respective square on the card. Each completed row (horizontal, vertical, and diagonal) is a BINGO.



The Community Science Network would love to hear about your Bingo success!
Tag us on social media @Bcinvases :)

Community Science Bingo

KICK OFF THE NEW YEAR AND CONTRIBUTE TO
COMMUNITY SCIENCE BY COMPLETING THIS BINGO CARD!

Evergreen Shrub	Fern 	Waterfowl	Host Tree for an invasive insect 	Backyard Bird
Deciduous Tree 	Culturally Significant Plant	Grass-Like Plant 	Bird of Prey	Conifer Tree 
Aquatic or Wetland Plant	Moss 	FREE	Invasive Bird or Mammal 	Lichen
Edible Plant 	Invasive Plant	Woodpecker 	Deciduous Shrub	Invasive Aquatic Species 
Culturally Significant Tree	Mammal 	Insect	Invasive Tree 	Shelf Fungi