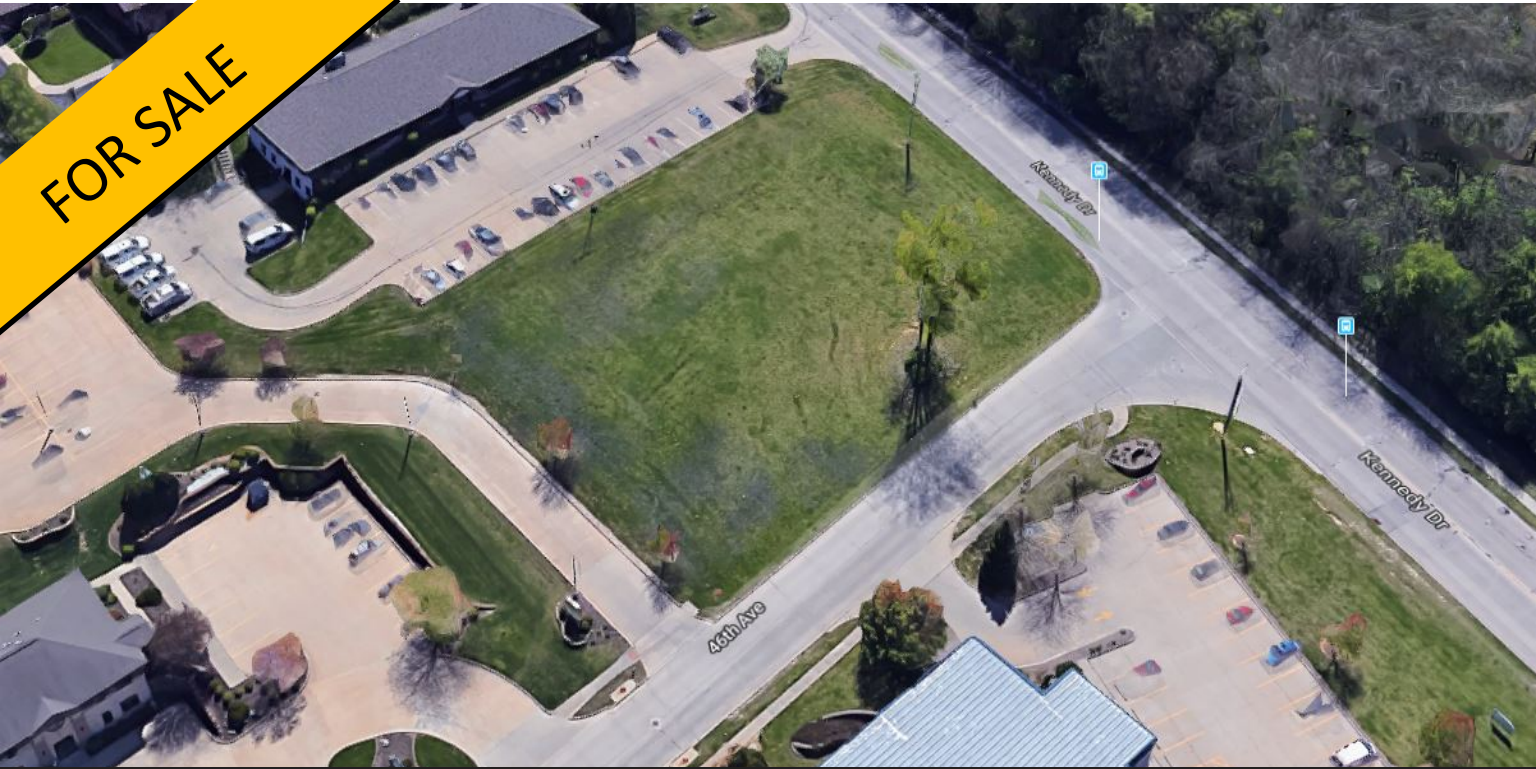


**FOR SALE**



## Development Land - Corner Lot

Corner of Kennedy Drive & 46<sup>th</sup> Ave, East Moline, IL

TheHawkeyeGroup.com



### Property Features

- Lot 1: .62 acres (27,051 SF M.O.L.)
- Zoned: B2
- Located in an excellent area on the corner of Kennedy Drive and 46<sup>th</sup> Avenue in East Moline ideal for office, retail, or other possible uses
- **Sale Price: \$110,000**

David Sountris | 309.236.2171  
[dsountris@TheHawkeyeGroup.com](mailto:dsountris@TheHawkeyeGroup.com)



1850 E. 53<sup>rd</sup> Street, Suite #1 • Davenport, Iowa 52807 • Office: 563.344.4295 • [www.TheHawkeyeGroup.com](http://www.TheHawkeyeGroup.com)

NO WARRANTY OR REPRESENTATION, EXPRESS OR IMPLIED, IS MADE AS TO THE ACCURACY OF THE INFORMATION CONTAINED HEREIN, AND THE SAME IS SUBMITTED SUBJECT TO ERRORS, OMISSIONS, CHANGE OF PRICE, RENTAL OR OTHER CONDITIONS, PRIOR SALE, LEASE OR FINANCING, OR WITHDRAWAL WITHOUT NOTICE, AND OF ANY SPECIAL LISTING CONDITIONS IMPOSED BY OUR PRINCIPALS. NO WARRANTIES OR REPRESENTATIONS ARE MADE AS TO THE CONDITION OF THE PROPERTY OR ANY HAZARDS CONTAINED THEREIN ARE ANY TO BE IMPLIED. BROKERS ARE LICENSED IN IOWA & ILLINOIS

Revised 11/12/2018