



SOUTH AMERICA'S **FIRST LUXURY SLEEPER TRAIN**



BELMOND

ANDEAN EXPLORER

PERU

‘THE JOURNEY BY TRAIN BECOMES
A MOMENT TO RELAX, RATHER THAN A
STRESSFUL INTERLUDE BETWEEN HOME
AND DESTINATION. SLOW TRAVEL
RE-ENGINEERS TIME, TRANSFORMING IT
INTO A COMMODITY OF ABUNDANCE’.

MICHAEL WILLIAMS, ON THE SLOW TRAIN





A NEW BELMOND ADVENTURE IN PERU

SOUTH AMERICA'S FIRST LUXURY SLEEPER TRAIN,
BELMOND ANDEAN EXPLORER JOINS BELMOND'S
GLOBAL PORTFOLIO AND EXPANDS OUR MANY
UNIQUE TRAVEL EXPERIENCES IN PERU.

**ONE OF THE HIGHEST TRAIN
JOURNEYS ON EARTH**

EXPLORING ANCIENT KINGDOMS AND
NATURAL WONDERS
FROM SUNRISE TO SUNSET
AND ALL THROUGH THE NIGHT.





VAST OPEN CANYONS AND ENDLESS HORIZONS



EARLIEST CIVILISATIONS AND RURAL COMMUNITIES

THE JOURNEY BEGINS



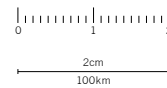
BELMOND ANDEAN EXPLORER TAKES YOU TO SOME
OF THE MOST BREATHTAKING SCENERY IN THE WORLD

From Cusco, the ancient capital of the Inca Empire;
traversing the highest plains of the Andes; to the reflective
beauty of Lake Titicaca; and a chance to explore the vast
Colca Canyon and towards the city centre of Arequipa,
a UNESCO World Heritage Site.

An alternative itinerary can also be taken from
Arequipa to Cusco in reverse.



MAP SCALE
2cm = 100km
(62miles)



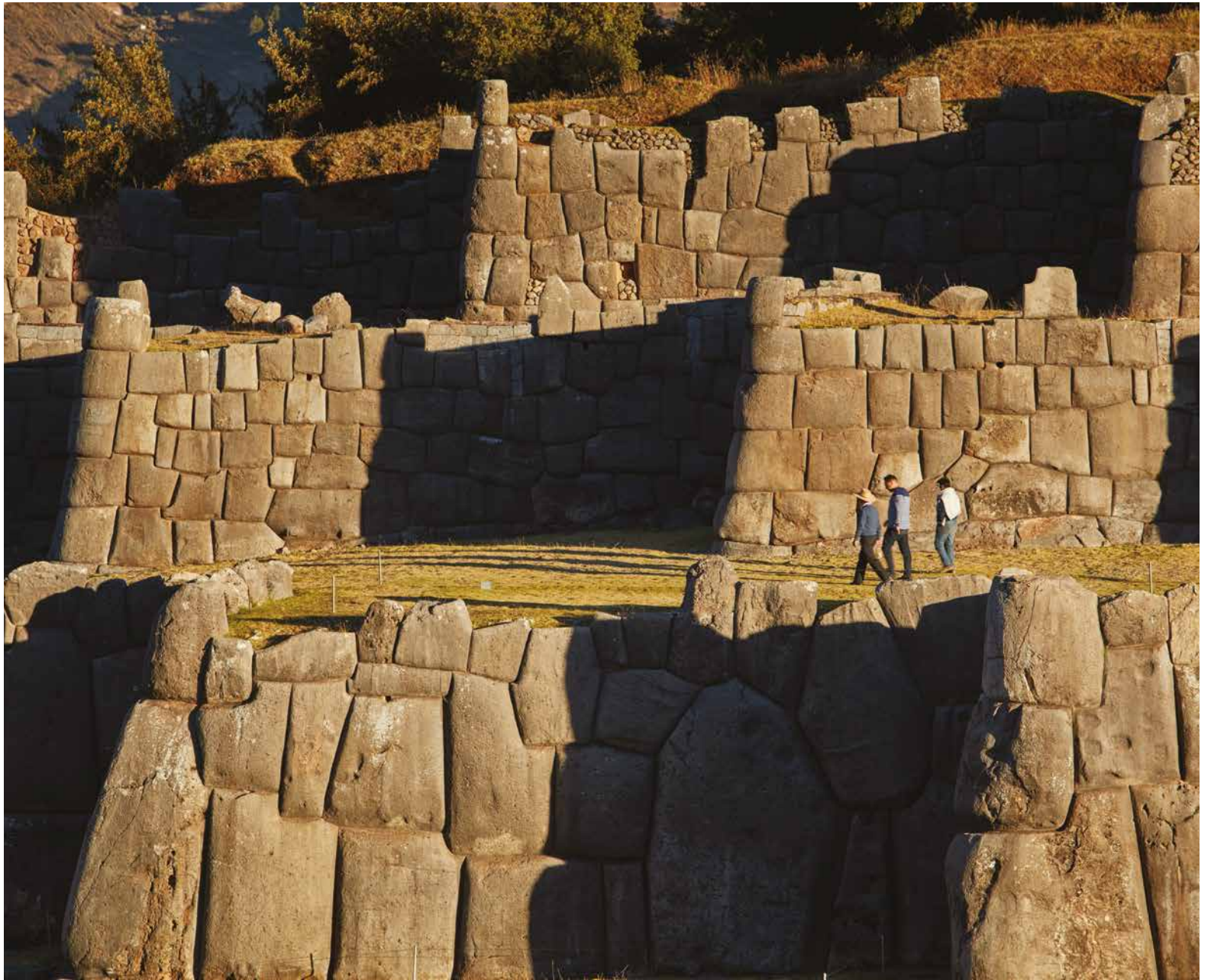
PERUVIAN HIGHLANDS

CUSCO – LAKE TITICACA – AREQUIPA CITY

(2 nights, 3 days)

Departing from Cusco, the capital of the ancient Inca Empire, across the Altiplano towards Puno and the reflective beauty of Lake Titicaca. Travelling onwards to the natural wonder of the Colca Canyon*, the dramatic realm of the soaring condor. An unmissable visit to Sumbay Caves, home to the rock art of the first humans to live in the Peruvian highlands, before reaching the volcanic 'White City' of Arequipa.

* available as an extension, not included in ticket price



ANDEAN PLAINS AND ISLANDS OF DISCOVERY

AREQUIPA – LAKE TITICACA – CUSCO

(2 nights, 2 days)

Departing as the sun sets on the baroque architecture of Arequipa and travelling overnight towards Lake Titicaca, the highest navigable lake in the world. Through the deep valleys and high mountains where South American camelids graze on the wide open plains and on to the 'big sky' country of the Peruvian Altiplano.



SPIRIT OF PERU - CUSCO AND LAKE TITICACA

SPIRIT OF THE WATER CUSCO TO PUNO

(1 night, 1 day)

An overnight escape aboard the stylish carriages of Belmond Andean Explorer departing from Cusco, across the giant peaks and wide open spaces of the highest plains of the Andes to reach Lake Titicaca – birthplace of the Incas.

SPIRIT OF THE ANDES PUNO TO CUSCO

(1 night, 1 day)

Travelling along one of the most beautiful rail routes in the world across the highest plains of the Andes from Puno to Cusco.



BELMOND ANDEAN EXPLORER

INGE MOORE, INTERIOR DESIGNER

‘I wanted to connect the interior with the location and make it a holistic journey of discovery. The ‘journey’ starts with the immediate surroundings - a place to calm the senses, enabling a new state of ‘slow living’ and relaxation whilst connecting with nature. Colours and textures are inspired by Peruvian nature - soft ivory alpaca tones, Andean slate greys and woven textures and handicrafts.’

FACTS AND FIGURES

Max number of guests	48
Dining cars	2
Observation car	1
Lounge car	1
Spa car	1
Deluxe Double Bed Cabins	2
Junior Double Bed Cabins	6
Twin Bed Cabins	11
Bunk Bed Cabins	5



TWO DINING CARS

Fresh, colourful and seasonal dishes using locally sourced ingredients from the Peruvian Andes are served in the elegant dining carriages. Menus are skilfully designed by our chefs from Belmond Hotel Monasterio, Cusco.

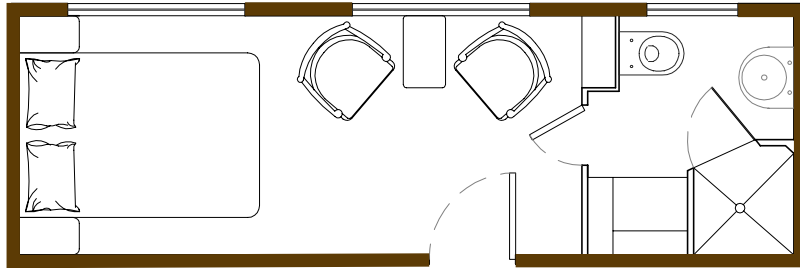
OBSERVATION CAR

The place to unwind, meet new friends and enjoy the views whilst sipping a Pisco Sour from the bar. Breathe in the Andean air from the open deck of the Observation Car as the train travels through the ever-changing landscape.

LOUNGE CAR

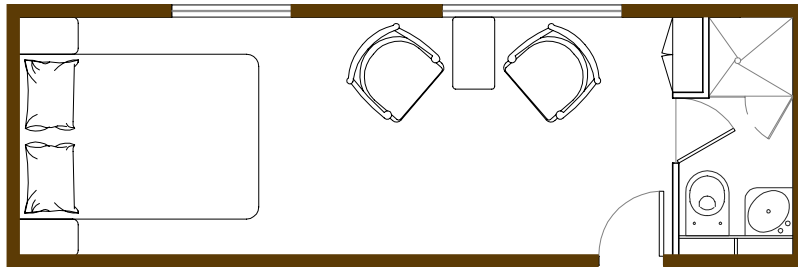
Invite new friends to gather around the baby grand piano and relax in comfortable seating as majestic vistas drift past outside. Share a lively story from the day's adventures and enjoy a refreshing drink from the bar.

CABINS



DELUXE DOUBLE BED CABINS

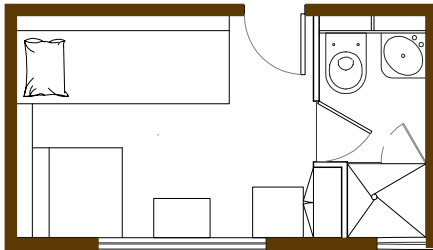
- Largest en-suite cabins on the train with double bed
- Sitting area (2 seats table)
- Long wardrobe
- Shower, pedestal, washbasin, vanity, WC.
- Total area of each compartment:
6.4 metres x 2.05 metres = 13.1 m²



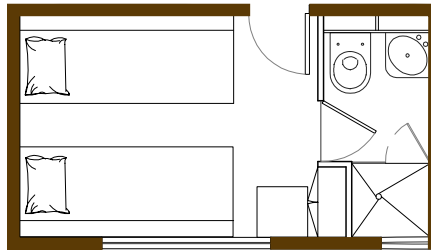
JUNIOR DOUBLE BED CABINS

- Largest en-suite cabins on the train with double bed
- Sitting area (2 seats table)
- Wardrobe
- Shower, washbasin, WC.
- Total area of each compartment:
6.4 metres x 2.05 metres = 13.1 m²

CABINS



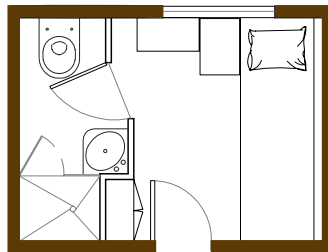
DAY CONFIGURATION



NIGHT CONFIGURATION

TWIN BED CABINS

- Larger en-suite cabins with day and night configuration, all lower level
- 2 single beds, side by side in night position
- 1 banquette and one seat in day position
- Wardrobe
- Shower, washbasin, WC
- Total area of each compartment:
3.6 metres x 2.05 metres = 7.4 m²



BUNK BED CABINS

- Smaller en-suite cabins with over and under bunk-beds
- 2 single beds (upper and lower berth) night position
- Banquette in day position
- Wardrobe
- Shower, washbasin, WC
- Total area of each compartment:
2.7 metres x 2.05 metres = 5.5 m²







(800) 478-4881 (US & Canada)

(502) 897-1725

tourdesk@irtsociety.com

www.irtsociety.com

