



Deluxe Rail Journey of Japan
November 3-18, 2017



With Sweet Train Extension
November 18-21, 2017



Tokyo · Hakone · Kyoto · Hiroshima · Yatsushiro · Fukuoka

Day 1: Tokyo

Private transfer Tokyo's Narita Airport to our Tokyo hotel.

In the next few days, accompanied by a local guide, we will explore Tokyo – the center of modern Japan. Tokyo is a huge metropolis, with surprises around every corner. This is an exciting, vibrant and bustling city, where everything and everyone moves at high speed. Tokyo offers it all – from the biggest fish market in the world to high-end shopping districts and areas where you can see first some of Japan's latest technological innovations.

In the evening, meet your guide and fellow travelers at a welcome dinner at the hotel.

Accommodation: Palace Hotel Tokyo

Meals: Dinner



Day 2: Tokyo

For your first introduction to Tokyo, you will visit some of Tokyo's classic areas. In the morning you will visit Tsukiji Fish Market (subject to permission), the largest fish market in the world, for a tour of its outer Market, before visiting to Asakusa Kannon Temple, one of Tokyo's most famous shrines dedicated to the Buddha of Mercy.

In the afternoon, enjoy a 50-minute river cruise to Odaiba, Tokyo's tech island for a brief tour of the Odaiba waterfront and, if time permits, The Toyota Showroom, which is a museum to all things Toyota. It is a Toyota "theme park" and a Tokyo-only sight, a multi-story display of Toyota's history and latest cars.



Returning to Tokyo will be a fun experience, as you board the unique Yurikamome Train line, an automatic driver-less Monorail train running on rubber wheels.

Accommodation: Palace Hotel Tokyo

Meals: Breakfast

Day 3: Tokyo

Today you will see a different side to Tokyo. Many of Japan's most unique pop-cultures, sub cultures, fashions and trends have developed in these districts right alongside some of the most culturally significant shrines and temples in Japan. You will spend today in the center of the action, seeing the fusion of traditional and modern Japan as formed by today's young artists and creators. Visit:

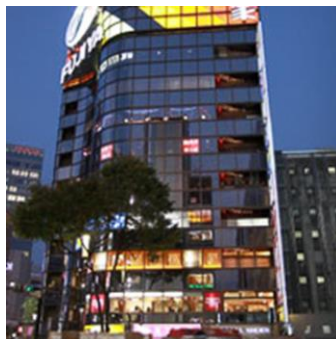
- **Meiji Shrine** – Just south of Shinjuku, the shrine is a very popular spot for weddings, and we are likely to see a ceremony of some kind.
- **Harajuku & Omotesando** - Trendy and popular districts, Omotesando is famous for its architecture; Harajuku has some crazy street fashion with a very lively and bustling atmosphere.
- From Harajuku, continue to **Shibuya**, to see the famous scramble crossing - featured in 'Lost in Translation' and many other films.



This afternoon, we visit the Ginza, Tokyo's famous business district. Surrounded by gleaming skyscrapers, enjoy a guided tour of the area, with a visit to the fascinating Sony Showroom, displaying the latest Sony Products. (On weekend afternoons, like today, Chuo Dori in Ginza is closed to traffic and is great for walking).

Taiko (Japanese Drumming) Workshop

Next, enjoy a hands-on Taiko (Japanese drumming) class. This fun workshop will teach you the basic techniques needed to produce the iconic thunderous sounds of Japanese drumming – a very popular sight at Japanese festivals and a big hit in our 2016 tour.



Accommodation: Palace Hotel Tokyo

Meals: Breakfast

Day 4: Hakone

Large luggage will be sent ahead to Kyoto, please pack a light bag for one night.

Today, you will travel to Hakone, famous for its natural beauty and hot springs. Start the day with an experience on the Tokyo Metro, from the hotel to Shinjuku Station. With over 3 million people passing through each day, Shinjuku Station is counted as the busiest train station in the world.

From Shinjuku, board the Odakyu Romance Car, a scenic, sightseeing train to Odawara Station, where you will meet your private motorcoach.

The rest of the day will be spent exploring “the backyard of Tokyo,” Hakone – a nature reserve and hot springs area with great museums, as well as the possibility, on a clear day, to enjoy one of the best views of Mt. Fuji. We’ll enjoy a cruise on Lake Ashi, as well as a visit to Owakudani Valley (weather permitting).

Another highlight in this area is the Open-Air Museum, a museum of contemporary art, which uses the beauty of the surrounding nature as a backdrop for its exhibits. IRT guests thoroughly enjoyed this last year. This evening, you can enjoy one of the highlights of any visit to Japan: the hot springs in our traditional Japanese inn.



Accommodation: Ryuguden Ryokan
Meals: Breakfast, Dinner

Day 5: Bullet Train to the Past - Kyoto

In the morning, catch your private coach to Mishima Station, and board the famous bullet train to Kyoto. The train journey will last two hours.

The next few days will be dedicated to Kyoto - the hub of traditional culture in Japan. This is a city that for hundreds of years has been an island of tradition in the swirling whirlpool of continual progress in urban Japan.

Kyoto has 17 World Heritage Sites - the most properties in one city – each a masterpiece representative of the era in which it was constructed. During your time in Kyoto, you will

encounter the history, cultural aesthetics, religion, and folklore that make up the Japanese puzzle. You will discover and experience the past rippling through the everyday life of locals.



First, we will visit the Kyoto Railway Museum. Opened just last year, the museum is of interest to both railfans and fans of rail travel alike.

Following our museum visit, we head to Kyoto's downtown area for a meeting and presentation with a leading contemporary **Washi Paper Artist**.

Sake Tasting and Japanese Pottery

Sipping *nihonshu sake* marks the end of the day, a taste of respite from the busy day. In Japan, depending on the season, the taste and method of serving *sake* changes, as do the vessels it is served in.

Taking a moment out of your touring, we invite you to join our specialist in Japanese *sake* and pottery for a bit of quiet and reflection while savoring the flavor of rice wine, and taking in the subtle shift in colors and design of *sake* cups and bottles designed by Japanese artisans, taking your favorite home with you at the end of the experience.



Tonight you are on your own to try any of the fabulous restaurants in Kyoto. We will make reservations at your request.

Accommodation: Hyatt Regency Kyoto

Meals: Breakfast

Day 6: Kyoto

Today we'll visit Kyoto's sights by private motorcoach, deepening your knowledge of Kyoto and Japan. You will be exposed to the fundamentals of aesthetics, Zen, architecture, and horticulture through visits to famous places such as the distinguished stone garden at Ryoanji temple, the spectacular Golden Pavilion, the Shogun Nijo castle, and a downtown market. You will also have the chance to experience a traditional Japanese tea ceremony.



An Evening with a Geisha

Brilliant red against radiant white. These are the colors illuminating faces behind teahouse windows in Kyoto's Gion district.

Movies and books strive to capture their essence. Yet only by speaking with one can you understand the dedication, talent, and people who make up all that is beautiful about Japan's geishas.

We offer you the chance to speak with one of these masters of Japanese tradition. You'll experience up close some of Japan's most classical arts, an affair conventionally reserved for Japan's rich and well-connected. Our guests in 2016 found it a fascinating experience.

Throughout an evening of fine dining at one of Kyoto's top-tier establishments, guests are treated to a performance that has been refined through years of schooling and apprenticeship.



Our personally-selected geisha and guides make the evening even more memorable as they remove communication and cultural barriers, inviting you to participate in a few of the geisha games of old, and encouraging you to directly ask questions about the geisha lifestyle and life in Kyoto.

By the end of the experience, you will have fascinating stories to take home, memories to cherish, and photographs that any fellow traveler will envy.

Accommodation: Hyatt Regency Kyoto
Meals: Breakfast, Dinner

Day 7: Eastern Kyoto Mountains

Continuing your journey in Kyoto, visit the beautiful Arashiyama district. See the Tenryū-ji Temple and then visit Sanjusangendo, a towering pavilion from olden times. You will also enjoy the scenic Sagano Romance Train.

Accommodation: Hyatt Regency Kyoto
Meals: Breakfast

Day 8: Kyoto - Hiroshima

Large luggage will be sent ahead to Hiroshima, please pack a light bag for a two-night stay.

In the morning, transfer to Kyoto station by taxi, where you will board the bullet train to Hiroshima, the city that entered the world's collective memory in that moment of horror on August 6, 1945. You might be surprised to find a modern, fast-paced, vibrant city. We are spending the night here – but first, we see Miyajima.

We will take the local train and ferry to Miyajima, and visit on foot one of Japan's three most scenic spots. The day is dedicated to exploring Miyajima, known for its large red shrine gate – the Grand Torii – which looks as if it's afloat at high tide.



Visit the famous seaside Itsukushima Shrine. A ropeway to the top of the mountain on the Island provides stunning views of the Inland Sea islands. We will visit the Daishoin Temple — with its many stairs. Alternatively, you might prefer time on your own.

If time permits, you can visit a temple with many small sculptures and unique ceremonies. We return to the mainland by ferry.

Accommodation: Sheraton Grand Hotel, Hiroshima
Meals: Breakfast

Day 9: Hiroshima

Today we explore Hiroshima. We will visit the Shukkei-en Garden, the Peace Memorial Park & Museum. Our guests in 2016 found this to be a moving experience and highly recommend it.



Accommodation: Sheraton Grand Hotel
Meals: Breakfast

Day 10: Kumamoto

Today we will take a bullet train to Kumamoto. Here we will visit the fascinating Kumamoto castle, the Hosokawa samurai residence and the Suizenji Garden.

Accommodation: Hotel Nikko Kumamoto
Meals: Breakfast

Day 11: Hitoyoshi Steam Train

After your included breakfast, we head to Kumamoto station to board the SL Hitoyoshi steam train (with maybe a chance to see the fully functioning turntable and stone car barn, the only one left in Japan). We'll chug along the scenic Kuma River at a time when the foliage should be spectacular.

Then visit Kiyajimachi Street for free time and lunch. In the afternoon, travel by coach to Fukuoka and transfer to our hotel.

Fukuoka is a lively and surprising city. The extensive shopping and entertainment area is a delight to explore. Alternately, you can relax with a stroll along the seaside boardwalk.



The Hakata district's local sake breweries are lively. It's fun to explore the vibrant shopping district. Dinner is on your own tonight as you experience the city. Or, if you choose, attend the Grand Sumo Wrestling Tournament being held in the city while we are here. (Optional and not included.)

Optional Fukuoka Grand Sumo Tournament:

Experience one of Japan's most iconic sporting events, the Grand Sumo Tournament. Held six times per year, the tournament pits the giant wrestlers against each other in a public arena.

This is a late afternoon event, beginning around 4 p.m. Tickets are limited and subject to availability and are not included in base tour fare. We will order these as soon as the booking window opens. Please advise us of your interest at time of booking.

Accommodation: Grand Hyatt Fukuoka
Meals: Breakfast

Day 12: Board the Seven Stars Train

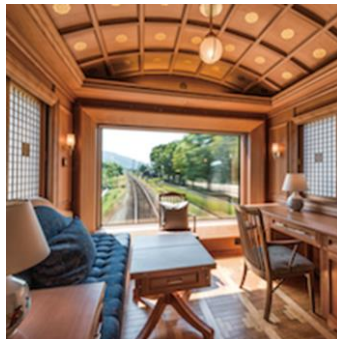
Enjoy breakfast at the hotel and a morning at leisure before we transfer to Hakata Station. There, the staff of the luxurious Cruise Train Seven Stars in Kyushu will welcome you to the beautiful Seven Stars' Kensei (Venus) private lounge in the station. You will soon discover why this beautiful train enjoys a coveted spot in IRT's "World's Top 25 Trains" list.



Relax and nibble some delectable sweets, enjoy the music by the pianist and toast your impending departure with a glass of champagne.

With the clang of a traditional railroad bell, each Seven Stars passenger will be welcomed and accompanied to the platform. In just a few minutes, the Seven Stars will arrive, and you'll be shown to your cabin, where your luggage will already be stowed.

The Cruise Train Seven Stars in Kyushu will be your luxurious base for the next four days. Note two nights will be on the train and one will be in a beautiful ryokan.



Settle in to your beautiful private cabin as the train heads east. Your first stop will be at Yufuin, a small town on the east coast, where you can choose sightseeing on your own or with the group. Return to the train and head south, down the east coast of Kyushu.

Tonight, enjoy a drink in the beautiful “Blue Moon” bar / lounge car, followed by an excellent dinner made with ingredients from Kyushu. You can expect beautiful live music to entertain you tonight. The train is stabled for its overnights, allowing a great night of sleep.

Accommodation: *Seven Stars*
Meals: **Breakfast, Lunch, Dinner**

Day 13: Mimitsu, Miyazaki & Kirishima

Arriving at Mimitsu station this morning, you'll have the chance for a morning walk around the little seaside town. Return to the train for breakfast and enjoy the changing tropical views of sea and sky unfolding before you before arriving at our next stop, Miyazaki.

We will enjoy group sightseeing in the Miyazaki area, with its islands, temples, shrines and beautiful parks.

Re-board the train to your next destination, and transfer by bus to Kirishima area and an exquisite, boutique ryokan (traditional Japanese inn), which is famous for its luxurious natural hot



springs. Tonight you will stay at your ryokan, sample the local cuisine and bathe in the soothing hot spring, if you choose. (You will stay at one of several ryokans since they are all small.)

Accommodations: Kirishima Ryokan

Meals: Breakfast, Lunch, Dinner

Day 14: Kagoshima

After a late breakfast, you will depart the ryokan and join the locals in a tradition of planting a small tree, before enjoying lunch at Tenku no Mori private resort.



This afternoon, the train travels through one of the most scenic lines in Kyushu, the Hisatsu Orange Railway Line. Skirting along the coast, this line offers spectacular views of the sparkling azure East China Sea, and passengers can watch as the sun sets into it.

Enjoy a Kumiko coaster-making experience aboard the train. (Kumiko is the fabulous Japanese traditional method of fitting pieces of wood into intricate patterns without nails or glue.) French cuisine is served for dinner, and the train stables in Minamata Station.

Accommodations: On board Seven Stars train

Meals: Breakfast, Lunch, Dinner

Day 15: Yatsushiro

Enjoy your final breakfast aboard the Seven Stars, as it enters Fukuoka Prefecture. Passengers will alight at Omuta Station and enjoy a Yanagawa canal cruise and lunch.

Back on board, a farewell event will be enjoyed as the train returns to Hakata Station, which will be decorated brilliantly for the upcoming festive season.



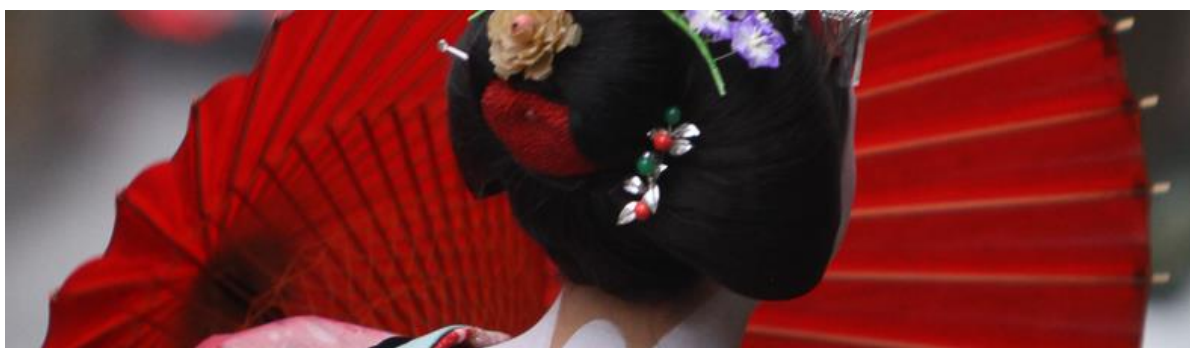
Our guide will meet our group and escort us back to the hotel for our final night in Japan. Dinner is on your own tonight in one of the many wonderful restaurants as you prepare for an early departure tomorrow for home.



Accommodation: Grand Hyatt Fukuoka
Meals: Breakfast, Lunch

Day 16: Departure

After your included breakfast, depart for home any time today. A private transfer from the hotel to the airport is included.



About the Train: Cruise Train Seven Stars in Kyushu By Owen C. Hardy

CEO & Founder, The Society of International Railway Travelers



IRT Photos by Owen Hardy

This amazing wooden screen is put together with no nails --the work of Kyushu artisans using just wood pieces of different designs. It casts a shadow in the afternoon on the facing wall -- one of the many beautiful design touches on this train.

Seven Stars stands for Kyushu's seven prefectures (similar to U.S. states). The train has seven cars: the "Blue Moon" bar/lounge car, whose entire rear wall is a giant picture window, dining car "Jupiter," and five sleeping cars.

ACCOMMODATIONS

The train carries just 28 passengers in its five luxurious sleeping cars. Four of the cars have three Standard Suites each. The fifth sleeper boasts two Deluxe Suites that can accommodate up to three guests. For the best view in the house, opt for Deluxe Cabin A, whose rear wall is a large picture window (located on the opposite end of the train from the bar/lounge car).

All the compartments, including the Deluxe Suites, have en-suite bathroom and twin beds separated by a night stand. The beds are quite comfortable and can easily accommodate a six-foot-tall person. During the day, the beds are converted to seating. The hand-made washbasins – different in each cabin – are made by a Kyushu master potter.



Deluxe Suite A (226 square feet) boasts a private glass picture window at the end of the car and two large closets. It has a beautiful combination of woods, including pear and cherry sections, and in the spacious bathroom, white sycamore walls with castor aralia floor. This can accommodate 3 persons if desired.



Deluxe Suite A

Deluxe Suite B (183 square feet) is 183 square feet. It has one large closet. It has a combination of rosewood in the sitting room and maple in the bedroom. The furniture is rosewood; the washroom is all maple. This suite can accommodate 3 persons if desired.

The 12 **Standard Suites** each accommodate up to two passengers. They are 108 square feet. Standard suites include a writing desk, with pull-out section for additional table space. Standard suite bathrooms contain a shower with cypress plank walls and a typical Japanese toilet with multiple controls. There is one wheelchair-accessible room, No. 301.

Each Suite is unique, constructed of varying combinations of woods: pear, quince, Nara oak, maple, Brazilian walnut and cherry. Mr. Hardy's cabin was constructed of beautiful, honey-colored pear wood; the furniture was pear and cherry and the bathroom was all maple. This is Mr. Hardy's compartment, pictured here. (He noted that his bed was quite comfortable and easily accommodated his six-foot frame.)



IRT Photo by Owen Hardy

Each Standard Suite window has five separate sections: an outer layer of glass, followed by a second layer of thin, wooden slats; then two sliding traditional Japanese windows with paper panes; then, two heavier sliding wooden windows. The final layer is a light gauzy curtain of gathered material.

All suites contain a minibar stocked with wonderful Japanese juices, green tea, "Swan Cider Tomosu" in its tiny bottle, Asahi "Dry" and Santory "The Premium Malts" Pilsner Beer, and other Japanese soft drinks. Drinks from the minibar are included in the fare.

Each compartment contains two plugs, one in the bathroom and one in the bedroom, plus a 3-socket multi-plug unit, for charging multiple devices.



U.S. and Canadian electronics can be used without an adapter in Japan and on the *Seven Stars*. WiFi is available throughout the train and works quite well (except in tunnels and other such places).

Also provided in all compartments: hair dryer, slippers, robe, towels, soap, shampoo, conditioner, body wash, shaving set, shower cap, hair brush, razor, toothbrush set and cotton balls.

SERVICE

The surfeit of over-the-top design elements is matched by an expert staff, who know how to combine Asian elegance and hospitality with genuine warmth.

Moreover, the *Seven Stars* staff is bilingual and couldn't be friendlier. Menus and signs are in English and Japanese.

DINING

Also near perfect is the *Seven Stars* kitchen, which turns out delicacies as beautiful as they are tasty. All of the meals are set menus; all drinks are included. Meals are served in both the dining and lounge cars. There is room for up to 30 passengers to dine at the same time.



There are six tables for two in the lounge car but there is enough flexibility so that they can seat a total of up to 18 passengers in the lounge car.

The dining car has seating for two, and for four. There are three tables for four; one is a private booth that is curtained off. There are two tables for two. Sixteen can be seated at once time in the dining car.



DRESS

In general, smart casual dress would be typical for day time: for meeting the train in the departure lounge, tea time, and the farewell event on board as well as for sightseeing.

Semi-formal clothing would be expected for dinner on board for the first night of the *Seven Stars* itinerary. This would be for men, a basic suit, or blazers, jackets, and for women, dress, or a suit, jacket and blouse. In either case, Japanese kimono is also acceptable.

Not acceptable any time: jeans, shorts, T-shirts or sandals except when wearing a Japanese kimono. Sneakers are acceptable only during excursions.



Every element on the train is specifically designed for the *Seven Stars*, save for one (we won't spoil your experience by naming it; see if you can guess!).



Owen loved this little dog sculpture! Look for it when you're on board.

We truly hope you will enjoy our journey to Deluxe Rail Journey of Japan. We have crafted it with care with the finest Virtuoso partners in Japan. We know you will love it!

Pricing

Deluxe Rail Tour of Japan:

\$17,390 per person, double occupancy

\$24,259 per person, single occupancy

Upgrades on board the Seven Stars:

Deluxe Suite A: \$2,879 per person

Deluxe Suite B: \$1,654 per person

**US Dollar pricing is based on the value of the Japanese Yen in February 2017. Trip cost to be reevaluated at time of final payment and may be adjusted accordingly. Tour pricing is based on a minimum of 15 passengers. Price may increase if group size is fewer than 15 passengers. Trip cost will be reevaluated at time of final payment and adjusted accordingly.*

Included in the tour cost:

- All accommodation as mentioned with taxes and breakfast daily
- 4 days on *Seven Stars in Kyushu* cruise train
- All meals and drinks while on the train program
- All luggage handling: baggage will be sent separately as mentioned in the itinerary
- Up to one piece of luggage per person is included in portage
- Hotel porter fee
- Private arrival transfers
- Private departure transfers
- Private accommodation in a boutique *ryokan* as part of the Seven Stars program. This will be one overnight.
- Sightseeing by private air conditioned coach
- All included activities as per the itinerary
- Night with a Geisha
- Visit with paper artist
- Visit with sake tasting and pottery maker
- Ancient drum workshop
- Tea ceremony
- Sightseeing as described in the itinerary. *Please note that exact itinerary for the Seven Stars for November 2017 is not published yet and is subject to change but will be similar.*
- All train trips as mentioned: High Speed trains as listed in the Green Car, first class Hakone to Kyoto, Kyoto to Hiroshima, Hiroshima to Hakata
- Romance Car Tokyo to Hakone
- Motorcoach round-trip transfer the Hakata station
- All gratuities for all drivers and guides are included in your package. No other tips are required

Not included:

- Any items of a personal nature
- Tickets to Sumo Wrestling tournament subject to availability and will be additional
- Meals unless specifically mentioned

Booking terms:

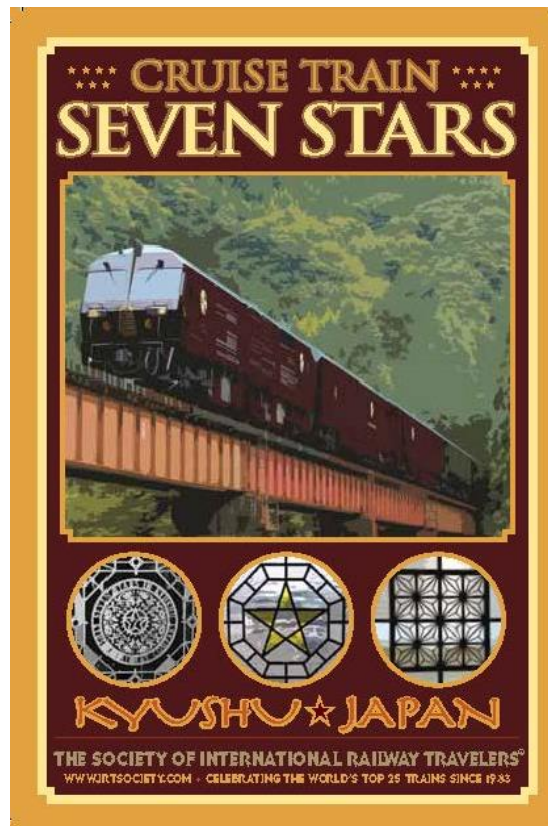
A deposit of 20% of total is due upon booking by check or credit card. We will send you a link to our secure payment portal when you are ready to deposit. Final payment is due 120 days prior to departure by check, credit card or wire transfer. All payments are nonrefundable.

Medical/evacuation insurance is required for this journey. We highly recommend full tour cancellation/interruption insurance to protect your travel investment. We will send out information about insurance and/or a quote upon booking.

The pricing of the *Seven Stars* is subject to change, as is the itinerary.

Recommended add-on:

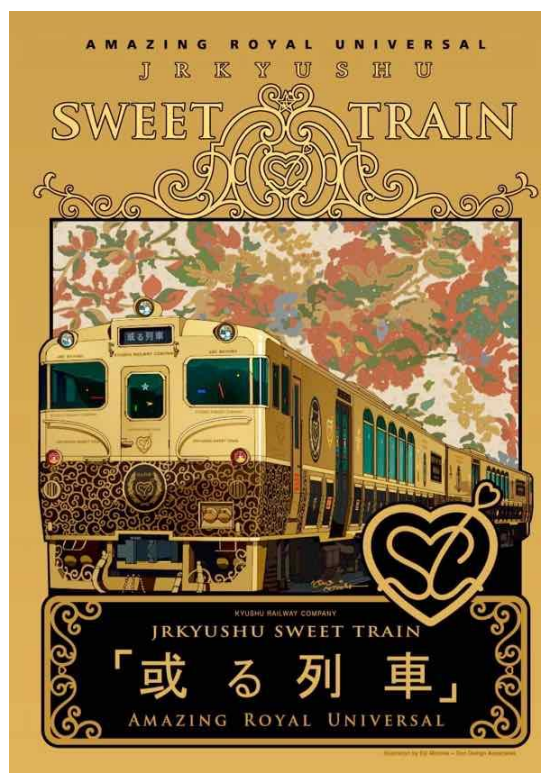
Please see our JR Kyushu Sweet Train extension (November 18-21), described in the next few pages.



“Sweet Train” Extension

November 18-21, 2017

JR Kyushu’s newest railway confection is the Aru Ressha, or *Sweet Train*. It’s one of a dozen special trains dreamed up by the creative minds of railway officials on Japan’s southernmost island. We’ve reserved a few coveted places for participants to add the *Sweet Train* to our Deluxe Rail Journey of Japan.



While on his quest last November to experience JR Kyushu’s luxurious and wildly popular *Seven Stars*, Owen Hardy hoped also to ride the *Sweet Train* — also a star in its own right. It turned out to be one of the highlights of his journey with great food, phenomenal service and gorgeous scenery. The self-propelled *Sweet Train* comprises just two cars. Car No. 1 has a more traditional, open seating plan. Car No. 2 consists of private “booths,” accessible through sliding wooden doors.

The *Sweet Train* serves a seasonal menu of delicacies from Kyushu. The two-hour journey includes a light lunch followed by three courses of desserts. The menu is the brainchild of Mr. Yoshihiro Narisawa, who has a famous restaurant named Narisawa in Tokyo.

Mr. Hardy’s light lunch was a bento box with meat, fish and vegetables. Then came three sweets courses, made from a variety of seasonal fruits, followed by a delicacy called mignardises (tea cakes).

The service on the *Sweet Train*, meanwhile, is top-notch: friendly, knowledgeable and indefatigable.



IRT photos by Owen Hardy

SWEET TRAIN EXTENSION ITINERARY

Day 16: Fukuoka – Nagasaki

Today's itinerary will be completed by public transport and walking.

This morning our group will meet our private guide in the hotel lobby and transfer by taxis to Hakata Station, where we board a local train to Nagasaki. Upon arrival in Nagasaki, hand luggage will be sent ahead to the hotel while we continue on a sightseeing tour by public transport. We will visit the Peace Park & Museum, Nagasaki Art Museum and the island of Dejima. Continue to our hotel and enjoy the evening at leisure.



Accommodation: ANA Crowne Plaza Nagasaki
Meals: Breakfast

Day 17: Nagasaki – Sweet Train - Sasebo

This morning we will visit Glover Garden and Oura Church in Nagasaki. Then transfer to Nagasaki Station to meet the *Sweet Train*. Enjoy the *Sweet Train* journey from Nagasaki to Sasebo.

The *Sweet Train* serves a seasonal menu of delicacies from Kyushu and beautiful scenery. The two-hour journey includes a light lunch followed by three courses of desserts. The menu is the brainchild of Mr. Yoshihiro Narisawa, who has a famous restaurant named Narisawa in Tokyo.



An example of a light lunch was a bento box with meat, fish and vegetables (pictured here). Then three sweets courses are served, made from a variety of seasonal fruits, followed by a delicacy called mignardises (tea cakes).

Upon arrival at Sasebo Station, transfer to a local train to Huis Ten Bosch (20 minutes, non-reserved seats, tickets are prepaid). We'll take a shuttle from the station to the resort, the top accommodation in the Sasebo area.

In the evening, independently explore Huis Ten Bosch Resort. (Admission tickets included in tour fare.)

Accommodation: Hotel Europe, Sasebo
Meals: Breakfast, Lunch on *Sweet Train*



Day 18: Sasebo – Fukuoka

Explore Huis Ten Bosch at your leisure – enjoy the varied museums, gardens, and amusement attractions (admission ticket included). In the early afternoon, take the JR train from Huis Ten Bosch to Sasebo (about 35 minutes), and transfer trains to Fukuoka

Hakata Station (about 2 hours). *Tickets are prepaid, seats are not reserved.* Upon arrival in the afternoon, we will take taxis to our hotel. Final evening at leisure in Fukuoka.

Accommodation: **Grand Hyatt Fukuoka**

Meals: **Breakfast**

Extension Day 19: Departure

Private transfers to the airport to meet your departing flight.

Sweet Train Extension Pricing:

\$2,238 per person, double occupancy

\$2,685 per person, single occupancy

Pricing based on a minimum of 10 passengers. Deposit is 20% and nonrefundable. All terms and conditions identical to those of the Deluxe Rail Journey of Japan. We are unable to offer the Sweet Train extension to anyone not joining the Deluxe Rail Journey of Japan.

Also note: US Dollar pricing is based on the value of the Japanese Yen in February 2017. Trip cost to be reevaluated at time of final payment and may be adjusted accordingly. Price may increase if group size is less than 10 passengers.

Included:

- Three nights' accommodation including breakfast daily
- Transportation as mentioned in the itinerary
- English speaking guide except on the *Sweet Train*
- All included activities as mentioned in the itinerary
- All entrance fees on guided days, as mentioned
- Baggage handling as mentioned in the itinerary, up to 1 piece per person
- JR train tickets as mentioned in the itinerary
- Hotels porter fee where applicable
- Tips for the guide
- Driver daily tip – included

Not included:

- Meals unless mentioned
- Beverages with meals unless explicitly stated
- Travel insurance
- Anything not clearly marked as included



The Society of International Railway Travelers

2424 Frankfort Ave., #2 Louisville, KY 40206 USA

800-478-4881 (toll-free within U.S. & Canada)

502-897-1725

tourdesk@irtsociety.com

www.irtsociety.com

