

Collins Canal

Subaqueous Water Main Replacements on 22 and 23 Street

Wednesday, February 18, 2026



MIAMIBEACH

Project Overview

Location

The project spans Dade Blvd, and 22–23 Streets, implementing utility installation under Collins Canal while adhering to standards set by FDOT and the City of Miami Beach.

Project Schedule

The construction will last approximately 21 weeks, segmented into eight distinct phases to minimize disruption and facilitate effective management of traffic and site coordination throughout the project.

- **Tentative Start:** late-March 2026
- **Tentative Completion:** August 2026

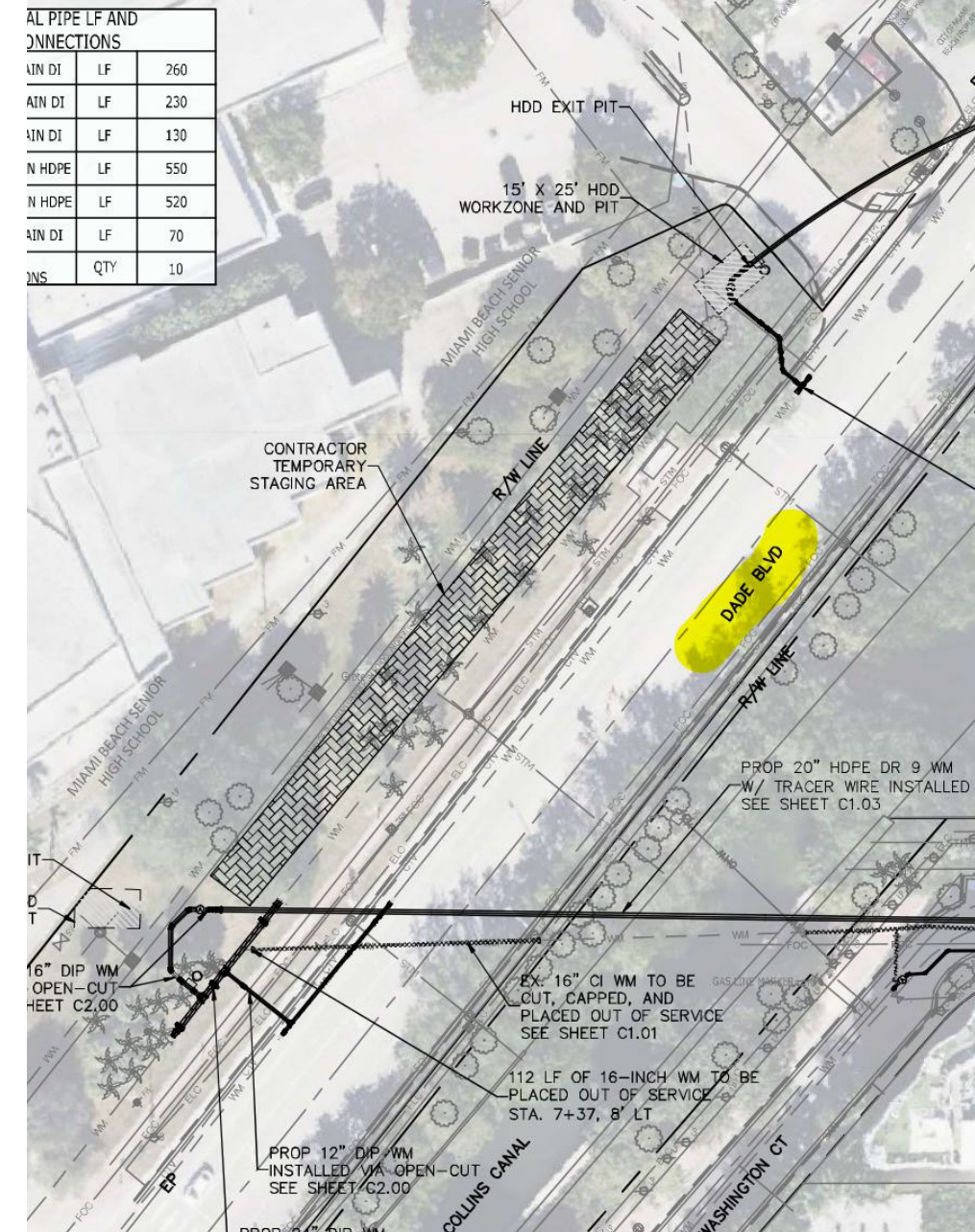


Phase 1

Mobilization and Area Protection

- The **first phase** of the project involves bringing construction material and protecting the trees around the staging area designated by the city.
- **Tentative Start Date:** Monday, March 23, 2026

TOTAL PIPE LF AND CONNECTIONS		
4" IN DI	LF	260
4" IN DI	LF	230
4" IN DI	LF	130
8" HDPE	LF	550
8" HDPE	LF	520
4" IN DI	LF	70
UNITS	QTY	10



Phase 2

Operations – South Drill

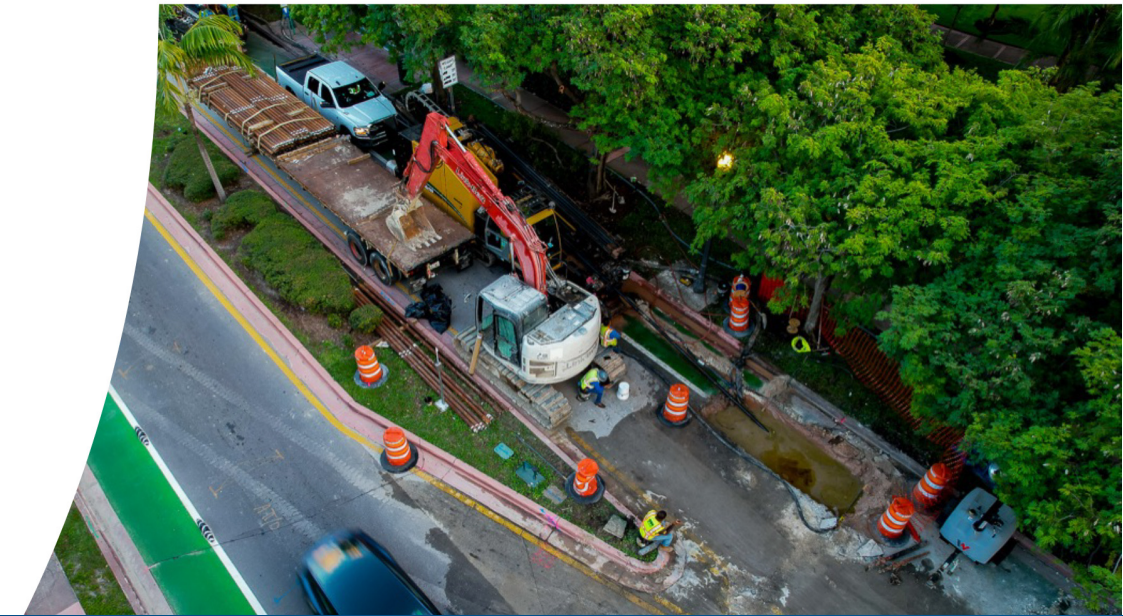
- The second phase of the project involves Horizontal Directional Drilling (HDD) operations on 22 Street, lasting 4 weeks.
- This phase includes lane closures on 22 Street, sidewalk closures, and designated pedestrian detours for safety throughout the construction site.
- We will keep one lane open to allow limited local vehicle traffic during this period.
- **Tentative Start Date:** March 23, 2026.

REFER TO FDOT INDEX
NUMBER 102-602
(MODIFIED FOR LANE DESIGN)
TO MAINTAIN 10' MIN TRAVEL LANE



| Directional Drill

- There will be construction noise due to equipment.
- Work hours will be from 7 a.m. to 6 p.m.
- **Traffic pattern changes will be in place 24/7 during this project.**



Wednesday, February 18, 2026

MIAMIBEACH

| Pipe Pullback

- **Pipe pullback** is the controlled process of pulling a pipe backward along its path so it can be positioned into the drilled hole.
- This operation will run 24 hours a day until installation is complete. Once started, the pullback cannot be paused, as interruptions increase the risk of improper installation. To minimize impacts, some work may occur at night, especially to avoid conflicts with the pipe string and Miami Beach Senior High School.
- Residents may notice increased construction activity on 22 and 23 Street near the drill rig. However, because the pipe string will be positioned closer to Miami Beach Senior High School, only minimal additional traffic impacts are expected in the surrounding neighborhood.



Phase 4 & 5

Open Cut Operations

- Phases 4 and 5 will focus on the open-cut work and tie-ins on the south side of 22 Street and Dade Boulevard.
- This phase will include planned lane closures near 22 Street and the southwest side of Dade Boulevard, along with pedestrian detours to keep everyone safe during construction.
- **Duration:** Approximately 4 weeks



| Open Cut Operations

- Continuation of Phases 4 and 5 focus on the south side's open cut and tie-in activities on 22 Street.
- **Duration:** Approximately 2 weeks



Phase 6

Open Cut Operations

- Phases 6 involve the open cut excavation and tie-in for the north drill.
- This work will include lane closures on Dade Boulevard and the south lanes of 23 Street, along with pedestrian detours and reduced-speed zones to help keep the area safe.
- **Duration:** Approximately 5 weeks



Phase 7 & 8

Asphalt & Finish Restoration

- Phases 7 and 8 will cover the final asphalt restoration on Dade Boulevard, 22 Street, and 23 Street.
- These phases will use the same maintenance-of-traffic (MOT) setup that was in place during the drilling and connection work.
- **Duration:** Approximately 2 weeks



| Summary & Next Steps

Minimizing Disruption and Coordination

Disruption Management

The **8-phase plan** is designed to minimize disruption for residents and businesses, ensuring smooth traffic flow while enhancing the community's infrastructure throughout the construction period.

Collaboration Focus

Close **coordination among the City** and contractors is crucial, emphasizing communication and cooperation to address any challenges that arise during the project for collective success.



For more information please contact:
Gabriella Gonzalez, Neighborhood Affairs Coordinator

✉ GabriellaGonzalez@miamibeachfl.gov

