

AGENDA

5:30 - bienvenida e introducción • welcome and intros

5:35 - presentación de *hallazgos* • *findings* presentation

5:50 - presentación de *consejos* • *guidance* presentation

6:20 - ¿preguntas y comentarios? • questions and comments

Apúntese → bit.ly/Midtown505 ← Sign Up

6:30 - *fin*



Que Dijeron y Que Sigue

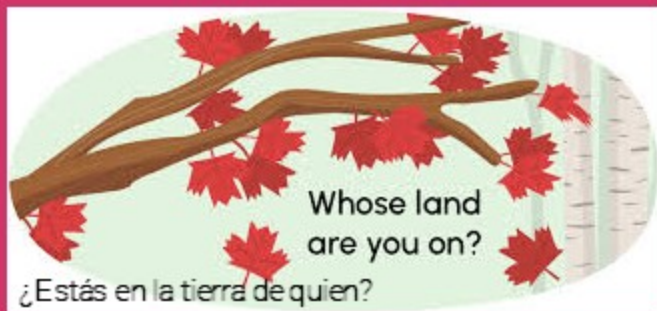
What You Said & What Happens Next

Reporte de Participación en Midtown
Midtown Engagement Report

Hallazgos y Consejos Preliminares
Findings & Preliminary Guidance

22 Marzo 2022
March 22, 2022

Reconocimiento de Tierras • Land Acknowledgement



"It is important to understand the longstanding history that has brought you to reside on the land, and to seek to understand your place within that history."

Land acknowledgements do not exist in a past tense, or historical context: colonialism is a current ongoing process, and we need to build our mindfulness of our present participation."

— **Northwestern University**



"Es importante comprender la larga historia que te ha llevado a residir en la tierra, y tratar de entender tu lugar dentro de esa historia."

El reconocimiento de la tierra no existe en un tiempo pasado, o en un contexto histórico: el colonialismo es un proceso actual en curso, y tenemos que ser conscientes de nuestra participación en el presente".

— **Universidad de Northwestern**



Socios de Midtown • Midtown Partners

Ciudad of Santa Fe – Concejal • Governing Body

“ Capitán • Captain ”

Universidad de NM, Escuela
de Arquitectura y Diseño,
Centro de Planificacion

UNM School of Architecture
+ Planning, Design Planning
Assistance Center (DPAC)

Socios • Partners (MEP)

Chainbreaker

YouthWorks

Earth Care

SF Art Institute

Littlelobe

Socios • Partners (MAP)

Fathers NM

Friends of the SF Public Library

SF Indigenous Center

La Familia Medical Center



Que Sigue

- Up Next

Pláticas de la
Comunidad •
Community
Discussions
Juntas de
Concejales •
City Council
Meetings



Eventos • Events

Fiesta • Block Party
Oct. 23, 2021 • #1000

Consultas • Consultations
Talleres en Escuelas •
Workshops in Schools
Caminadas • Canvassing
Encuestas • Surveys

Posolada
Dec. 19, 2021 • #500

QUE DIJERON, QUE COMPARTIMOS • WHAT YOU SAID, WHAT WE SHARED

Midtown es el corazón de Santa Fe

Les preguntamos:

¿Cual es su **visión** para el sitio?

¿Que le hará sentir **bienvenido** a quedarse?



Midtown is in the heart of Santa Fe

We asked you:

What is your **vision** for the site?

What will make you feel like you **belong** here
and want to stay?

>2000

Encuestas • Surveys



42%

Inquilinos • Renters



48%

Nacidos • Born Here
Vivido aquí 20+ años
Lived here 20+ years



67%

Bajos Recursos •
Low Income



400

~19% = Menos de 25 años

~19% = Under 25 years old



11%

Indígena • Indigenous



Santa Fe
Indigenous Center



338

Respuestas en español •
Spanish responses

~17% of Total



54%

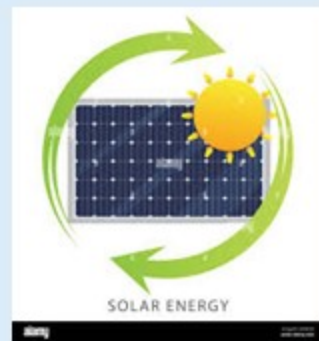
Hispano/Latino/Latinx

Residentes quieren un Midtown que es...
Residents want a Midtown that is...



LOCAL

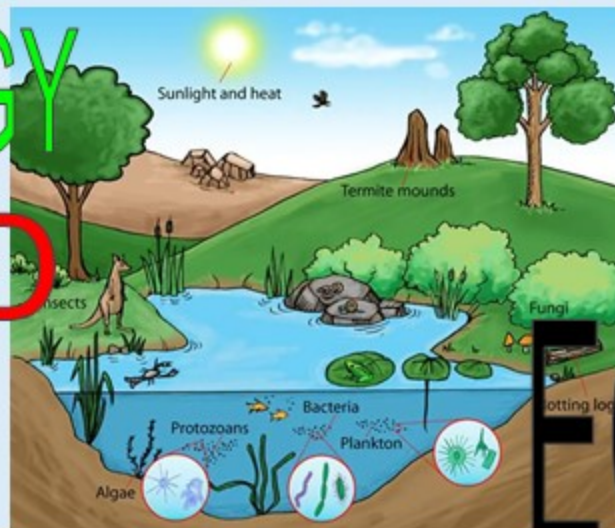
GREEN ENERGY



INCLUSIVE



EQUITABLE



SALUD



¿Como Adelantamos Midtown? •

How do we move Midtown Forward?



WHO QUIÉN

- Governing Body Concejal
- Partners Socios
- Ciudad City



WHAT QUÉ

- Guidance Consejos
- Community Outreach + Input
Alcance en la Comunidad
- City Guidance Consejos para la Ciudad
- Policy Development
Desarrollamiento de Políticas

WHEN CUÁNDO

- Final Report • Reporte
Final Mar 31
- Mas Alla • Beyond



MAPPING THE MIDTOWN GUIDANCE

CATEGORÍAS PARA LOS CONSEJOS DE MIDTOWN

Approach • Proceso

Vision • Visión

Support for Local Community •

Apoyo Para Comunidad

Life at Midtown • Vida en Midtown




Asesorar y Actualizar Planes ya Existentes

• Assess and Update Existing Plans





APPROACH • PROCESO

- Assess and Update Existing Plans (add or consider Midtown)
 - Develop and practice **Inclusive Language Access** Policy and Protocols in all public engagement.
 - **Update plans and commitments** related to multimodal networks in Santa Fe, to incorporate Midtown and its forthcoming uses, **through a lens of mobility justice**. (E.g. the Santa Fe Pre-Teen And Teen Independent Transit And Mobility Plan)
 - Midtown is Community Driven
 - Community members should have **a role in the RFP process and ongoing management**.
 - Establish a nonprofit collective of community actors and organizations that will **continue to advocate and advance the community benefit recommendations** included in this report.
 - Reserve parcel(s) for development of a **Community Land Trust**.
- 

VISION VISIÓN



- Midtown Is a Place for Youth and Families
 - In the spirit of creating a space for youth and families, center schools and learning in the site development. Create **intergenerational learning opportunities**
 - **Accessible recreation** is a key piece of ensuring Midtown is usable for families
- Healthy Communities
 - Promote **Healthy Community Design and development**, which includes walkable neighborhoods, access to nature, good to great quality of air and water, and low vehicle dependence.
 - Use tools like **Health Impact and Equity Impact Assessments**, and Social Determinants of Health standards to assist priority decision making.




VISION continued VISIÓN continuado

- Sustainable Development

- Set ambitious goals and standards to **create a sustainable and resilient Midtown**, including environment, economy, and social equity, following established principles and assessment frameworks (e.g., EcoDistricts, Living Communities Challenge, LEED ND+, Enterprise Green Communities, Arid Low Impact Development, Passive House, etc).
- Build additional **infrastructure to be all-electric** and plan for renewable energy sources, particularly solar, across Midtown.

*“yo quiero ver más plantas y
más recycling bins para salvar
nuestro planeta más jardines y
mas centros de ayuda de
imigrantes y centros de arte”*



SUPPORTING LOCAL COMMUNITY •

APOYO A LA COMUNIDAD LOCAL

- Local Economic Development & Support
 - Implement city programs and facilitate space that **incentivize and support local business**. The site should host a **market space, entrepreneurial support, business incubation, and local specific programs**.
 - Focus on **workforce training and support** that includes **wrap around services for workers and families**. A fuller program of support will ensure sustainability and success for workers in Santa Fe.



"I would love for there to be more resources available at a sliding scale- the arts, education, jobs, housing, community building"

SUPPORTING LOCAL COMMUNITY •

APOYO A LA COMUNIDAD LOCAL

"We need to build things we don't have, like affordable housing for people who are actually low-income and working class"

- Housing Affordability and Security
 - Develop and implement a **Neighborhood Stabilization Plan** for existing vulnerable neighborhoods threatened by new development (especially Hopewell Mann, adjacent to the Midtown site), in collaboration with community members, organizations, and housing advocates.
 - In both rental and ownership, **prioritize housing that's affordable for individuals and households upon which the economy of Santa Fe relies:** teachers, artists, public servants, firefighters, hotel and restaurant workers, etc. (many are essential workers)
 - Ensure that housing is accessible and provides opportunities for **long term residency across generations**, supporting neighborhood stabilization and community cohesion



LIFE AT MIDTOWN • VIDA EN MIDTOWN



- Community Services
 - **Leverage existing buildings and spaces** to establish community services in initial phasing and anchor the district in community. Ensure the presence of community services in perpetuity.
 - Prioritize government offices with **public-facing services that Santa Feans use on a regular basis** (e.g., Neighborhood Services, Planning and Building Permits), and **keep core official functions downtown** (City Hall, Council offices, etc.).
- Arts & Culture Programming & Spaces
 - Provide **affordable or free visual art opportunities** for artists of all ages, including gallery space, art workshops/classes, artist live/work spaces, providing community art facilities and maker spaces, musical performance spaces and community art spaces.
 - House and promote **powwow grounds** within the Midtown site. Prioritize use with guidance by Indigenous peoples.
 - Keep the **Greer Garson Theater & Fogelson Library**.



LIFE AT MIDTOWN • VIDA EN MIDTOWN

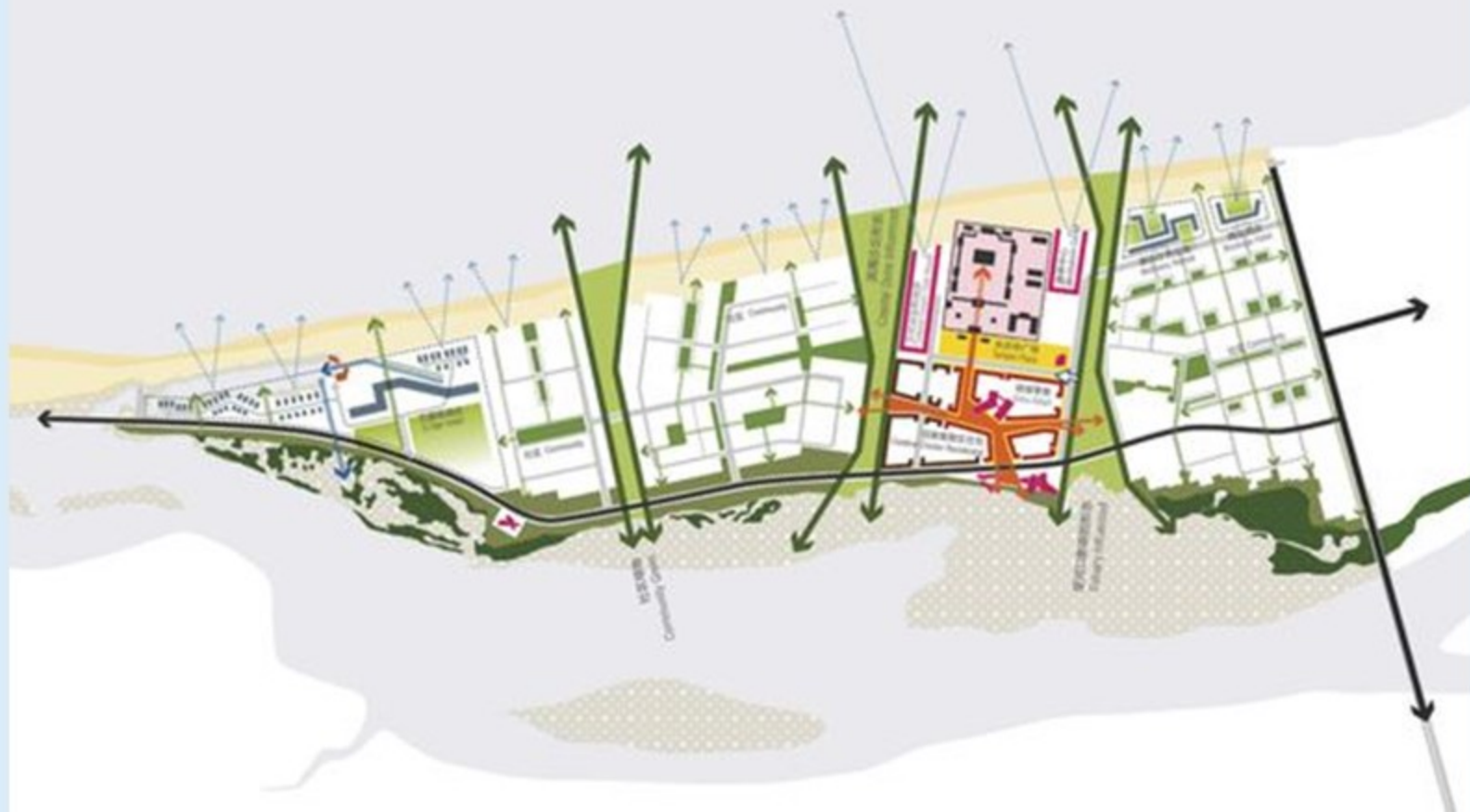


- Arts & Culture Industry (makers, providers, orgs)
 - Continuing to use Midtown for filmmaking and **connect commercial use with training and education** for local economic opportunity (studios, etc.).
 - **Celebrate food and the culinary arts as a local tradition** and way to bring community together. Integrate food offerings into all uses and activities on site - food trucks, markets, coffee shops, local restaurants.



I'd love to see a vibrant gathering area for local musicians and performers, utilizing the magnificent Greer Garson Theater once more.

Framework Plan (example)



PLAZO DE DESARROLLO DE MIDTOWN • MIDTOWN DEVELOPMENT TIMELINE

Planes Urbanísticas para Desarrollo

Land Development Plan



Planes Comunitarias para Desarrollo

Community Development Plan



Midtown Redevelopment Plans

Governing Body

Planes de Re-Desarrollo de Midtown

Concejal de la ciudad

Metropolitan Redevelopment Area Plan structure and policies are incorporated into the Redevelopment Plans. Approvals process is still being developed.

Plan de Re-Desarrollo de las Áreas Metropolitanas estructuras y políticas son incorporadas en esas planes. Aún se están creando los Procesos de Aprobación.

... y Que Sigue ... and What Happens Next



Apúntese → bit.ly/Midtown505 ← Sign Up

Follow/Sigue at CultureConnects.site

www.MidtownDistrictSantaFe.com