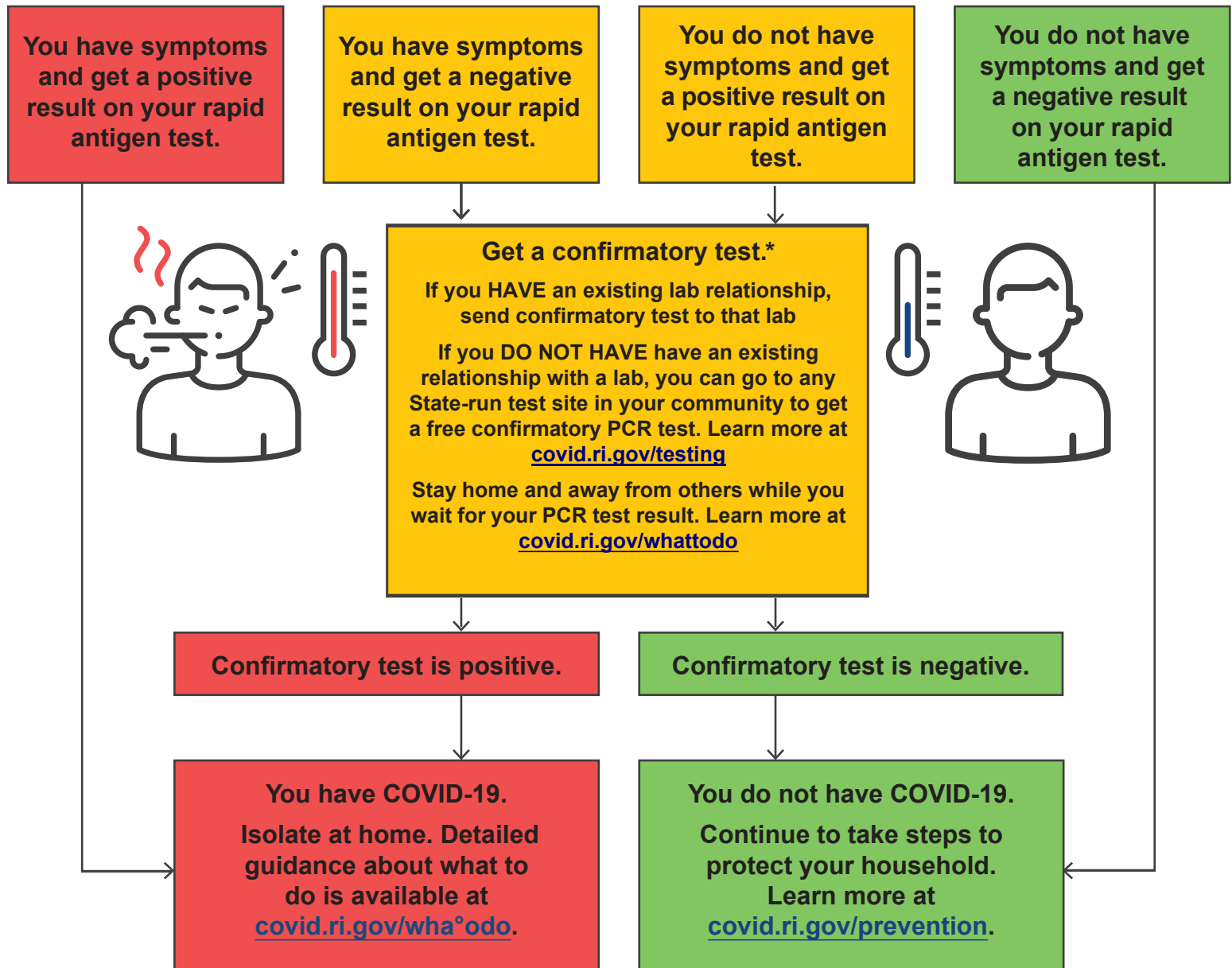


BUSINESS TESTING PROGRAM

COVID-19 Confirmatory Testing Protocol

The Rhode Island Department of Health (RIDOH) recommends confirmatory testing if you do not have [symptoms](#) of COVID-19 and get a positive result on a rapid antigen test, or if you have [symptoms](#) and get a negative result on a rapid antigen test.



*Your confirmatory test must be a lab-processed nucleic acid amplification test (NAAT) or polymerase chain reaction (PCR) test. You cannot use a rapid NAAT or PCR test or an at-home NAAT or PCR test to confirm your rapid antigen test result. If you DO NOT HAVE an existing lab relationship, you can schedule a confirmatory test at portal.ri.gov or by calling **401-222-8022**.

9/3/21



**RHODE
ISLAND**