



FIRST LUTHERAN CHURCH

Connecting people to God and to each other.

CONNECT We warmly welcome and invite everyone to participate and engage in ministry, with a special focus on hospitality, small group ministry, and service.

WORSHIP We strive for worship to be invitational, contagious, and relational. We want more people to hear the message of Jesus, and we will do anything to erase any barrier that prohibits people from a spirit of worship.

IMPACT We will make a difference in this world as Jesus-followers. We will engage in impactful acts of service, encourage generosity, and strive to leave a long-lasting impact on the next generation.

CONNECT | WORSHIP | IMPACT

Welcome!
We are glad you're here.

619 Broadway N, Fargo ND | 701.235.7389
flcfargo.org | info@flcfargo.org
Wi-Fi: FLCGuest, password: FLC@0619

WELCOME TO CELEBRATION WORSHIP

SUNDAY - 9 & 10:30 A.M. | APRIL 12, 2026

WELCOME

SONGS:

Where You Lead Me
King Of Kings

COMMISSIONING:

WOMEN'S ECUADOR MISSION TEAM

SONG: *Goodness of God*

SCRIPTURE: Luke 24:13-35

MESSAGE: Pastor Marty Tollefson

OFFERING

SONG: *You Raise Me Up*

APOSTLES' CREED

PRAYERS OF GOD'S PEOPLE

THE LORD'S PRAYER

BENEDICTION

SONG: *My Lighthouse*

BAPTISM (10:30 a.m.)

Vivian Grace Raymond
daughter of
Amanda and Grant Raymond



WELCOME TO SANCTUARY WORSHIP

SUNDAY - 9:30 A.M. | APRIL 12, 2026

PRELUDE:

Selections from Dixieland Jazz Group

WELCOME

OPENING PRAYER

COMMISSIONING: WOMEN'S ECUADOR MISSION TEAM

CONFESSION & FORGIVENESS:

L: Alleluia! Christ is Risen!

C: Christ is risen indeed! Alleluia!

L: Almighty God, to whom all hearts are open, all desires known, and from whom no secrets are hid: Cleanse the thoughts of our hearts by the inspiration of your Holy Spirit, that we may perfectly love you and worthily magnify your holy name, through Jesus Christ our Lord.

C: Amen

L: If we say we have no sin, we deceive ourselves, and the truth is not in us. But if we confess our sins, God who is faithful and just will forgive our sins and cleanse us from all unrighteousness.

Moment for silent reflection.

L: Most merciful God,

C: We confess that we are in bondage to sin and cannot free ourselves. We have sinned against you in thought, word, and deed, by what we have done and by what we have left undone. We have not loved you with our whole heart; we have not loved our neighbors as ourselves. For the sake of your Son, Jesus Christ, have mercy on us. Forgive us, renew us, and lead us, so that we may delight in your will and walk in your ways, to the glory of your holy name. Amen.

L: Almighty God, in his mercy, has given his Son to die for us and, for his sake, forgives us all our sins. As a called and ordained minister of the Church of Christ, and by his authority, I therefore declare to you the entire forgiveness of all your sins, in the name of the Father, and of the Son, and of the Holy Spirit.

C: Amen.

OPENING HYMN: (Green Hymnal #439)

What a Friend We Have in Jesus

CATHEDRAL CHOIR ANTHEM:

Blessed Assurance – arr. Mark Hayes

David Ferreira, conductor; Bill Tweten, accompanist

GREETING

PRAYER OF THE DAY:

L: Let us pray,

C: O risen Christ, on the road to Emmaus you were the disciples' companion. Be at our side on the journey of faith. Kindle anew the desire to proclaim your Word. May it illumine us and may our hearts burn to bear witness to it. May your Holy Spirit teach us the art of explaining scripture and open our eyes to recognize you. Amen.

HYMN: (Green Hymnal #448)

Amazing Grace, How Sweet the Sound

SCRIPTURE: (Terry Yoney)

Acts 2:22-36

GOSPEL ACCLAMATION (Green Hymnal pg. 83)

GOSPEL: Luke 24:13-35

MESSAGE: Pastor Marty Tollefson

HYMN OF THE DAY: (Blue Hymnal #731)

Precious Lord, Take My Hand

APOSTLES' CREED (Green Hymnal pg. 85)

OFFERING

SPECIAL MUSIC:

Pennies from Heaven

Dixieland Jazz Group

OFFERTORY HYMN: (Green Hymnal pg. 96)

Create in Me a Clean Heart

Create in me a clean heart, oh God, and renew a right spirit within me. Cast me not away from your presence, and take not your Holy Spirit from me. Restore to me the joy of your salvation, and uphold me with your free Spirit.

PRAYERS OF GOD'S PEOPLE

THE LORD'S PRAYER (congregation sings)
Our Father, who art in heaven, hallowed be thy name, thy kingdom come, thy will be done, on earth as it is in heaven. Give us this day our daily bread; and forgive us our debts, as we forgive our debtors. And lead us not into temptation, but deliver us from evil. For thine is the kingdom, and the power, and the glory, forever. Amen.

BENEDICTION

SENDING HYMN: (Insert)
Just a Closer Walk with Thee

POSTLUDE
When the Saints Go Marching In
 Dixieland Jazz Band



SPECIAL MUSIC TODAY
 Thank you to the Dixieland Jazz Group for their wonderful music at today's service.
Jeremy Brekke, Trumpet
Matt Patnode, Clarinet
Gene Okerlund, Trombone
Jim Knudson, Drums
Doug Neill, Tuba
David Ferreira, Piano

**Large print bulletins available (see ushers)*

Welcome
 to First Lutheran

We're so glad you've joined us for worship!
 If you're a guest, please scan the QR to let us know how we can connect with and pray for you.

WEEKLY CALENDAR

Sunday, April 12
 9 a.m. Worship, Celebration Center
 9:30 a.m. Worship, Sanctuary
 10:30 a.m. Worship, Celebration Center
 10:30 - 11:30 a.m. Kids@First (age 3 - Gr. 4), Lower Level
 10:45 - 11:45 a.m. Coffee & Conversation with Council, Adult Education Room

Monday, April 13
 9 a.m. - 12 p.m. Quilters, Adult Ed. Room

Tuesday, April 14
 8 - 9 a.m. Men's Bible Study, Luther Room
 1 - 3 p.m. Knit and Crochet Group, Bethany
 2 - 3:30 p.m. Fit & Strong Exercise Program for Seniors, Gym
 5:30 - 7:30 p.m. Tae Kwon Do, Gym

Wednesday, April 15
 1:30 - 3 p.m. Weds. Fellowship, Chapel & Great Hall
 4:45 - 5:45 p.m. Wednesday Supper, Great Hall
 5:30 - 6 p.m. Crusader Choir, Choir Room
 5:30 - 5:55 p.m. Joyful Noise Choir, Chapel
 6 p.m. Worship, Celebration Center
 6 - 7 p.m. Kids@First (Age 3 - Gr. 4), Lower Level
 6 - 7 p.m. 56ers (Gr. 5 & 6), Adult Ed. Room
 7 - 8 p.m. Confirmation (Gr. 7 & 8), Great Hall
 7:10 - 8:10 p.m. Cathedral Choir Rehearsal, Choir Room
 8 - 9 p.m. Young Life (Gr. 9 - 12), Youth Center

Thursday, April 16
 9 - 11 a.m. Helping Hands, Great Hall
 12 - 1 p.m. FLC Foundation Meeting, Luther Room
 12 - 1 p.m. Small Group Bible Study, Cross Talk Room #1
 2 - 3:30 p.m. Fit & Strong Exercise Program for Seniors, Gym

Sunday, April 19
 9 a.m. Worship, Celebration Center
 9:30 a.m. Worship, Sanctuary
 10:30 a.m. Worship, Celebration Center
 10:30 - 11:30 a.m. Kids@First (Age 3 - Gr. 4), Lower Level
 10:45 - 11:45 a.m. Adult Education, Adult Ed. Room

SUNDAY, APRIL 12, 2026

THE WAY TO JESUS

“I AM THE WAY, THE TRUTH, AND THE LIFE.
NO ONE COMES TO THE FATHER EXCEPT THROUGH ME” JOHN 14:6

YOUR COMMUNITY OF FAITH

YOUR PASTORAL TEAM

Pr. Stephanie Tollefson stollefson@flcfargo.org
Pr. Marty Tollefson mtollefson@flcfargo.org
Pr. Jessica McEvers jmcevers@flcfargo.org
Rollie Johnson rjohnson@flcfargo.org

COUNCIL OFFICERS

Karen Carlson, President
Brad Keller, Vice President
Jon Erickson, Treasurer
Carole Schalow, Secretary

GENEROSITY



In-Person Giving: offering plate during worship
Online Giving: flcfargo.org/generosity/
Text to Give: Text "Give" to 833.890.5248
Mail a Check: 619 Broadway N, Fargo, ND 58102
Scan to Give: Scan the QR code

CELEBRATE PRAYER

We believe in the power of prayer. As God's people, please pray for these publicly-requested individuals and their families:

Allen and Delores Brynjulson, Bill Parker, Bonnie Lyczewski, Brian, Brian Tessman, Bruce Jorgensen, Chet Levenson, Claryce Iverson, Cora Lieb, Dallas Boatright, Darrell Moon, David Anderson, Dawn, Deb, Del Herrmann, Diana, Donna, Faith Simonson, Gene, Gene, Glenn, Jan Baldner, Jan Stoffel, Janice Ames, Jeanne, Jim Hulberg, Joanne Herrmann, Kay Maden, Kristie Sundell, LaMae Friskop, Laola Rakotomahenina, Larry, Laurie Bjornson, Linda Johnson, Lea Vacha, Lois Altenburg, Makenna Mattesi, Mary Ann Berg, Maika Knudson, Mavis Bennett, Mike, Naya, Paul Hulberg, Phyllis and Donald Sutherland, Renitta, Renitta and Gene, Ruth, Ruth Dunncliff, Sean, Selso, Sharon, Solen, Susan, Thomas Berg, Todd McComb, Tracy

SYMPATHIES

First Lutheran Church sends sympathies and prayers to the friends and family of:

John Mark
Shawn Harter, grandson of Phyllis Peterson



FLCFARGO.ORG

CONNECT - WORSHIP - IMPACT

WORSHIP SCHEDULE

Sundays

9 a.m. - Celebration Center

9:30 a.m. - Sanctuary*

*The FLC radio broadcast is on KFGO AM790 and FM104.7 at 9:30 a.m.

10:30 a.m. - Celebration Center

Wednesdays

1:30 p.m. - Wednesday Fellowship

6 p.m. - Celebration Center

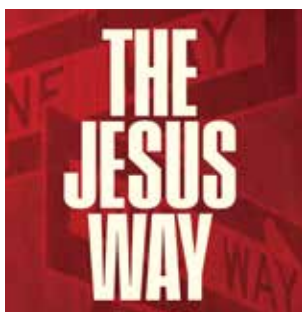
SERMON SERIES:

THE JESUS WAY

Sunday Sermon Series

The early Christians referred to themselves as followers of "The Way," underscoring their belief that faith was centered on Jesus, who said, "**I am the way, the truth, and the life. No one comes to**

the Father except through me" (John 14:6). This is a central tenet of Christian theology and is deeply rooted in the Hebrew Scriptures, which often speak of walking in the ways of the Lord (Psalm 25:4). For believers, the Jesus Way has profoundly practical implications for how we live a life of discipleship. The Jesus Way is an invitation to be transformed in body, mind, and spirit: to recognize our sin, repent, and live in the freedom and forgiveness of God's amazing grace. It is a way of connection— to God and to one another. In the New Year, we'll journey together through the Gospel of Luke, where Jesus' teachings are expressed through parables.



NEXT STEPS, NEW MEMBER CLASS

Sunday, May 3 | 12 p.m.

Adult Ed Room

You're invited to join our faith community! Whether you have been visiting First Lutheran

Church for a long time or are new, we invite you to take the next step and join a community that cares deeply about connecting with God and each other! Join Pastor Marty and Alyssa Holmen for a light lunch and time to meet others and learn more about FLC. Scan the QR to sign up!



SHARE YOUR VOICE:

NOMINATE LEADERS FOR OUR CHURCH

Our Nominating team is inviting the congregation (April 8-22) to submit names of people who may be interested in serving our congregation on our Council, Nominating Team, or attending the Synod Assembly this coming June. Here's what we need!

- **3 nominees for Council** at our Annual Meeting in September
- **2 nominees for Nominating Team** at our Annual Meeting in September
- **7 delegates** to attend the Synod Assembly at the Holiday Inn, Fargo, June 5-7.

Names and nominee positions can be submitted in the Church office during this two-week period. Thank you!

ADULT EDUCATION: COFFEE AND CONVERSATION WITH COUNCIL

Today - Sunday, April 12

10:45 a.m. in the Adult Ed Room.

Enjoy coffee, conversation, and connection with our church council!

COMMISSIONING: ECUADOR WOMEN'S MISSION TEAM

Today and Wednesday we are praying a blessing over 11 women from First Lutheran who will travel to Ecuador to serve alongside our mission partners. The team includes: **Christine Bachmeier, Nancy Beto, Hailey Brenden, Jackie Bruenjes, Eliza Johnson, Polly Kloster, Trish Olmstead, Janna Sagvold, Danielle Tinquist, Kay Todd, and Ann Williams.** Please pray for safe travels, good health, meaningful connections, and for God to deepen each woman's faith through this experience. The team is so grateful for your support!



MEN'S GROUP WITH PASTOR MARTY TOLLEFSON

Tuesdays, 8 - 9 a.m.

Join Pastor Marty Tollefson for a weekly gathering designed for men who want to grow stronger in their faith and connect with others. No registration required.

News YOU CAN USE!

Connecting people to God and to each other.

SUMMER YOUTH CAMPS!

Sign up your kids and teens today - don't miss these opportunities to grow in faith and create fun memories!



VACATION BIBLE X-PERIENCE (VBX)

Age 3 - Grade 5 | June 8 - 11 | 6 - 8 p.m.
Hope North Campus: 2900 Broadway N. Fargo
Cost: \$40 per child (family max \$75)

Join us for Lost Planet: The Way Home - a week of music, games, and faith! Register by May 25 (or until full). Scan the QR to find out more and sign up!



LUTHER CREST DAY CAMP

Grades K - 5 | June 25 | 7 a.m. - 5 p.m.
Luther Crest, Alexandria, MN
(depart from First Lutheran)
Cost: \$40 per child

A full day of camp - worship, games, crafts, and swimming! Scan the QR to find out more and sign up.



WYLDLIFE SUMMER CAMP

Grades 6 - 8 | July 21 - 25
Detroit Lakes, MN
Cost: \$750 (\$100 deposit)

A fun faith-filled week to make friends and lasting memories! Scan the QR to find out more and sign up.



YOUNG LIFE SUMMER CAMP

Grades 9 - 12 | June 12 - 17 (travel June 11 & 18)
Lake City, Michigan
Cost: \$1,200 (\$100 deposit)

An unforgettable week of adventure, friendship, and growing in faith. Scan the QR to find out more and sign up.



For questions or to find out about need-based scholarships for any camp, contact Gina at youthadmin@flcfargo.org.

VOLUNTEERS NEEDED FOR VBX

June 8 - 11 | 6 - 8 p.m.

Are you interested in helping kiddos grow in their faith and have fun this summer? It takes many volunteers to make VBX an incredible week. Scan the QR to sign up!



VOLUNTEERS NEEDED: LUTHER CREST DAY CAMP

Thursday, June 25 | 7 a.m. - 5 p.m.

Interested in a meaningful day helping kiddos grow in their faith and have fun? Contact Elizabeth at eferguson@flcfargo.org or Gina at youthadmin@flcfargo.org to find out more.

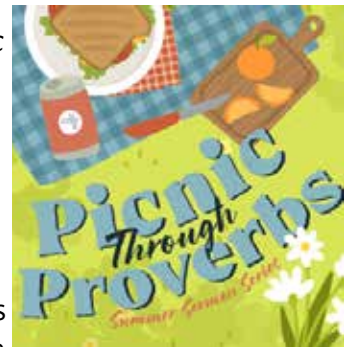
VOLUNTEERS NEEDED: MIDDLE SCHOOL & HIGH SCHOOL SUMMER CAMPS

Interested in helping teens grow in their faith and have fun this summer? Please contact Drew at derickson@flcfargo.org or Gina at youthadmin@flcfargo.org to find out more.

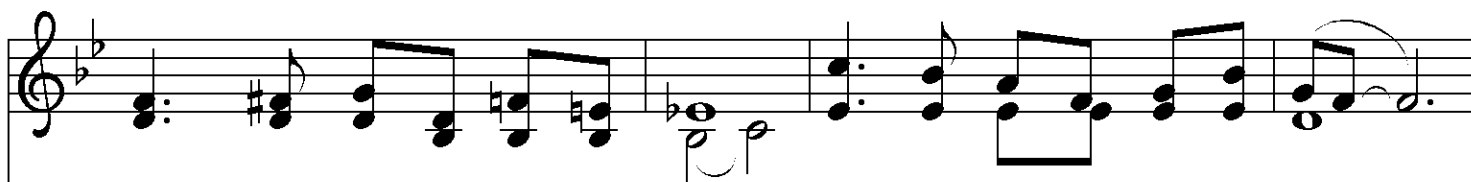
COMING UP - SUMMER SERMON SERIES: PICNIC THROUGH PROVERBS

May, June, and July

This summer, join us for *Picnic Through Proverbs*, a journey through biblical wisdom that helps us navigate everyday life. Proverbs are comparisons designed to invite reflection rather than offering quick answers. The book of Proverbs shows what it looks like to live a faith that trusts God. We are called to center our thoughts and actions on Him — to study, to think, to learn the practical disciplines of faithful living. These sayings are not quick bites of inspiration; they are words to reflect and meditate upon, shaping the way we see and respond to the world. Wisdom is not only for deep thinkers. It's how we get through daily life. Wisdom guides our decisions, relationships, and reactions. Whether life feels calm or chaotic, this series invites us to gather around Scripture, reflect on God's truth, and grow in wisdom as we grow in the knowledge and image of Jesus, who is Wisdom itself.



Just a Closer Walk with Thee



Refrain Just a clos - er walk with thee, grant it, Je - sus, is my plea;
1 I am weak but thou art strong: Je - sus, keep me from all wrong;
2 Through this world of toil and snares, if I fal - ter, Lord, who cares?
3 When my fee - ble life is o'er, time for me will be no more;



dai - ly walk - ing close to thee, let it be, dear Lord, let it be.
I'll be sat - is - fied as long as I walk, let me walk close to thee. *Ref.*
Who with me my bur - den shares? None but thee, dear Lord, none but thee. *Ref.*
guide me gent - ly, safe - ly o'er to thy king - dom shore, to thy shore. *Ref.*



Text: North American traditional
Music: CLOSER WALK, North American traditional