

REGISTER NOW!

# EVIDENCE-BASED PUBLIC HEALTH

Build your skills in applying evidence-based decision making to improve population health and advance health equity!



This course takes a “hands-on” approach using presentations, practice, exercises, and case examples to build skills that busy practitioners can utilize in their daily work in any program area.

This **FREE** course will meet over Zoom each Thursday from 1 – 3 PM January 20 through March 24. Register now on [TRAIN!](#)

Questions? Contact [maurine.crouch@yale.edu](mailto:maurine.crouch@yale.edu)

# EVIDENCE-BASED PUBLIC HEALTH

## Who?

- Instructors include Dr. Kathleen O'Connor Duffany, Dr. Debbie Humphries, Amy Griffin, and Dr. Tekisha Dwan Everette from Yale School of Public Health
- It is aimed at people working in public health at any level, department, or organization



## What?

- The Evidence-Based Public Health (EBPH) course was developed by the Prevention Research Center in Saint Louis in 1997 as a training for the public health workforce. The aim of EBPH training is to build skills in applying evidence-based decision making to improve population health and advance health equity.
- This course takes a “hands-on” approach using presentations, practice, exercises, and case examples to build skills that busy practitioners can utilize in their daily work in any program area.

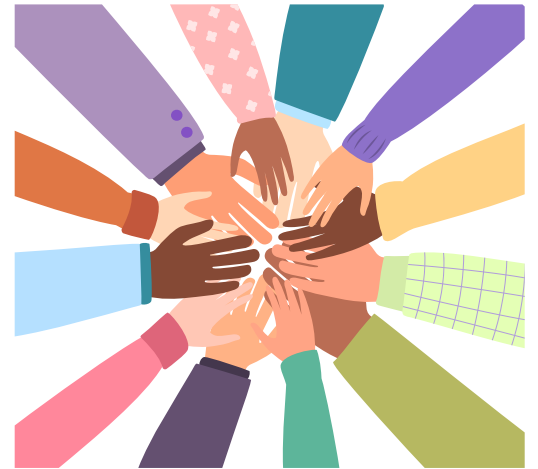
**When?** 10 consecutive Thursdays from 1 – 3 pm starting on January 20 and ending on March 24, 2022.

**Where?** Each session will take place over Zoom. Register now on [TRAIN](#) (course code 1101385.)

## Why?

**This course is designed to improve your ability to:**

- Develop a concise statement of the issue.
- Conduct a community assessment.
- Describe an issue in a quantitative way.
- Discover what is known about an issue through the scientific literature.
- Prioritize program or policy options for health issues.
- Use economic findings to choose or develop interventions.
- Develop an action plan for a program or policy.
- Evaluate a program or policy using qualitative, quantitative, and economic evidence.
- Effectively communicate public health evidence to policy makers.
- Describe health equity and its relevance to your work.
- Use evidence-based decisions to advance health equity.



**Register Now!**



**How?** Registration is free at: <https://www.train.org/main/course/1101385>  
Contact [maurine.crouch@yale.edu](mailto:maurine.crouch@yale.edu) with any questions