

BSCC Participants

Hospitals & Health Systems

Advanced Care Hospital of Montana
Beartooth Billings Clinic
Big Sandy Medical Center
Big Horn Hospital Association
Billings Clinic
Cabinet Peaks Medical Center
Central Montana Medical Center
Clark Fork Valley Hospital
Dahl Memorial Healthcare
Frances Mahon Deaconess Hospital
Garfield County Health Center
Glendive Medical Center
Logan Health
Liberty Medical Center
Livingston Healthcare
Marias Medical Center
McCone County Health Center
North Valley Hospital
Northern Montana Health Care
Northern Rockies Medical Center
Northwest Community Health Center
Pondera Medical Center
Prairie County Hospital
Roosevelt Medical Center
Rosebud Health Care Center
Roundup Memorial Healthcare
Sheridan Memorial Hospital Association
Sidney Health Center
Shodair Children's Hospital

Federally Qualified Health Centers

Bullhook Community Health Center
Northwest Community Health Center
One Health Clinic
Riverstone Health

Specialty Clinics

Allergy & Asthma Consultants of Montana
Center for Asbestos Related Disease
Family Health and Wellness
Illuminate Wellness
Kalispell Foot & Ankle Clinic
Missoula Cardiology
Montana Allergy and Asthma Specialists
Ortho Rehab
PureHealth, DPC

Behavioral Health

Charlie Health
Community Medical Services
Frontier Psychiatry
Rimrock Foundation Treatment Center
Youth Dynamics

Skilled Nursing

Hillside Health & Rehabilitation
Immanuel Lutheran
Ivy Healthcare – Great Falls
Ivy Healthcare – Deer Lodge
Riverside Health Care Center
The Village Health and Rehabilitation
Valley View Estates Health Care Center

Optometry

Mountain View Eyecare
The Eye Clinic Surgicenter

Emergency Medical Services

Marion Fire Department
Three Forks Area Ambulance Service

Updated 5/7/2021



Pharmacies

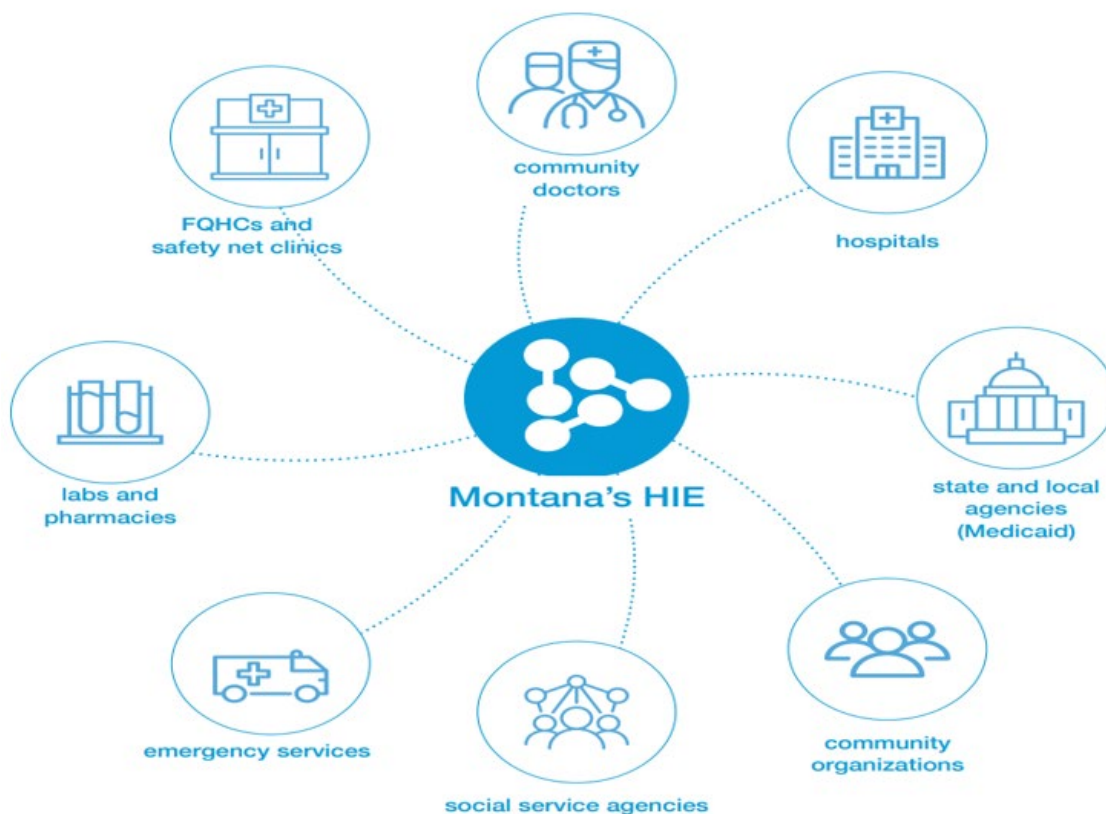
Benton Pharmacy
Big Sandy Pharmacy
Genoa Healthcare – Billings
Genoa Healthcare – Bozeman
Sykes Family Pharmacy
Thrifty Drug Stores
Western Drug - Havre
Valley Drug

Payors

Medicaid

County/State Agencies

Lewis & Clark County Coroner
State Medical Examiner



Updated 5/7/2021

This project is funded in whole or in part under a Contract with the Montana Department of Public Health and Human Services. The statements herein do not necessarily reflect the opinion of the Department.



+406.422.1078



<http://www.mtbscc.org>



2021 11th Avenue, Suite 2
Helena, MT 59601