

Let's make
LEARNING
FUN!

Summer Learning ACADEMY 2022

June 20-Aug. 4

Monday-Thursday, 8:00 a.m.-12:30 p.m.
(No classes the week of July 4)

GRADES
K-5

6
WEEKS!

At Peter Hobart Elementary School, 6500 W. 26th Street, St Louis Park

What happens at Learning Academy?

- Enrichment in the areas of literacy, math, wellness, global & social justice, and arts
- Antiracist education
- Provide student leadership opportunities
- Engage scholars in a non-traditional way of learning
- Enhance the spirit of students
- Reconnect students post COVID-19



- ✓ **FREE breakfast** upon arrival
- ✓ **FREE lunch** daily before leaving or prior to afternoon classes
- ✓ **FREE transportation available**
Bus schedule postcard will be mailed in June. Eligibility per school year.
- ✓ **Attendance expected each day**



SAMPLE DAILY ACADEMY SCHEDULE

8:00-8:20 a.m.	Arrival/Breakfast
8:20-9:20 a.m.	Class 1
9:20-10:20 a.m.	Class 2
10:20-11:00 a.m.	Wellness
11:00 a.m.-12:00 p.m.	Class 3
12:00-12:30 p.m.	Lunch/Dismissal



SUMMER LEARNING & PLAY - Community Education Partnership
FREE and fee-based afternoon enrichment courses available through Community Education if student attends the morning Learning Academy.
COMING SOON: a complete listing of free course offerings.



Have Summer Learning Academy questions?

Parents/guardians should contact their student's classroom teacher to learn how to sign up for the Summer Learning Academy. If you have other Learning Academy questions please contact the Academy principal, Reagan Gusman, at 952-928-6090 or gusman.reagan@slpschools.org.



**St. Louis Park
Public Schools**

Summer 2022 Learning & Play



St. Louis Park
Community Education

GRADES K-5

COMMUNITY EDUCATION PARTNERSHIP

Sign up for these programs at www.bit.ly/SLPSummer22

Choose from arts, sports, and Science, Technology, Engineering, and Mathematics (STEM) camps.

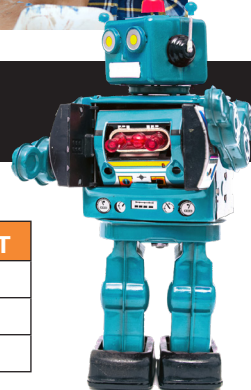


AFTERNOON FEE-BASED CAMPS - More camps listed online!

Scholarships available – contact Kelleen O’Brion at obrion.kelleen@slpschools.org.

STEM CAMPS

SUBJECT	TIME	DATES	COST
Jr Engineering of The Great Outdoors - Ages 5-9	1:00 - 4:00 p.m.	Mon-Thur, July 11-14	\$155
3D Printing Gizmos & Gadgets - Grades 3-9	1:00 - 4:00 p.m.	Mon-Thur, August 1-4	\$149
VEX 123 STEM Lab: Intro to Coding Robotics - Ages 5-8	1:00 - 4:00 p.m.	Mon-Thur, August 8-11	\$155



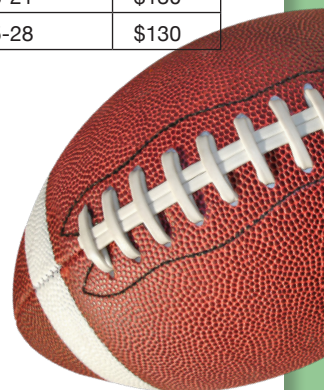
ART CAMPS

SUBJECT	TIME	DATES	COST
The Power of Anime Art Workshop - Ages 5-12	1:00 - 4:00 p.m.	Mon-Thur, June 20-23	\$143
Sparkle Love - Ages 5-12	1:00 - 4:00 p.m.	Mon-Thur, June 27-30	\$130
Cooking and Baking-Drawing Art Workshop - Ages 5-12	1:00 - 4:00 p.m.	Mon-Thur, July 11-14	\$143
You Go Girl! - Ages 5-12	1:00 - 4:00 p.m.	Mon-Thur, July 18-21	\$130
Canvas & Clay Camp - Ages 5-12	1:00 - 4:00 p.m.	Mon-Thur, July 25-28	\$130



SKYHAWKS SPORTS CAMPS

SUBJECT	TIME	DATES	COST
Soccer Camp - Ages 6-12	1:00 - 4:00 p.m.	Mon-Thur, June 20-23	\$149
Mini-Hawk Multi-Sport Camp - Ages 4-7	1:00 - 4:00 p.m.	Mon-Thur, June 27-30	\$149
Flag Football Camp - Grades 6-12	1:00 - 4:00 p.m.	Mon-Thur, July 11-14	\$149
Multi-Sport Camp - Grades 6-12	1:00 - 4:00 p.m.	Mon-Thur, July 18-21	\$149
Tennis Camp - Ages 7-10	1:00 - 4:00 p.m.	Mon-Thur, July 25-28	\$149
Volleyball Camp - Grades 7-12	1:00 - 4:00 p.m.	Mon-Thur, August 1-4	\$149



Have Summer Learning & Play questions?

If you have questions regarding these camps, please contact Kelleen O’Brion at 952-928-6399 or obrion.kelleen@slpschools.org.



St. Louis Park
Public Schools