

Overcoming Barriers through Health in All Policies

Alana Erickson, MPH
Communications Specialist

Niki Euhardy, MPH
Policy & Equity Coordinator



Public Health
Prevent. Promote. Protect.

**Winnebago County
Health Department**

Overview

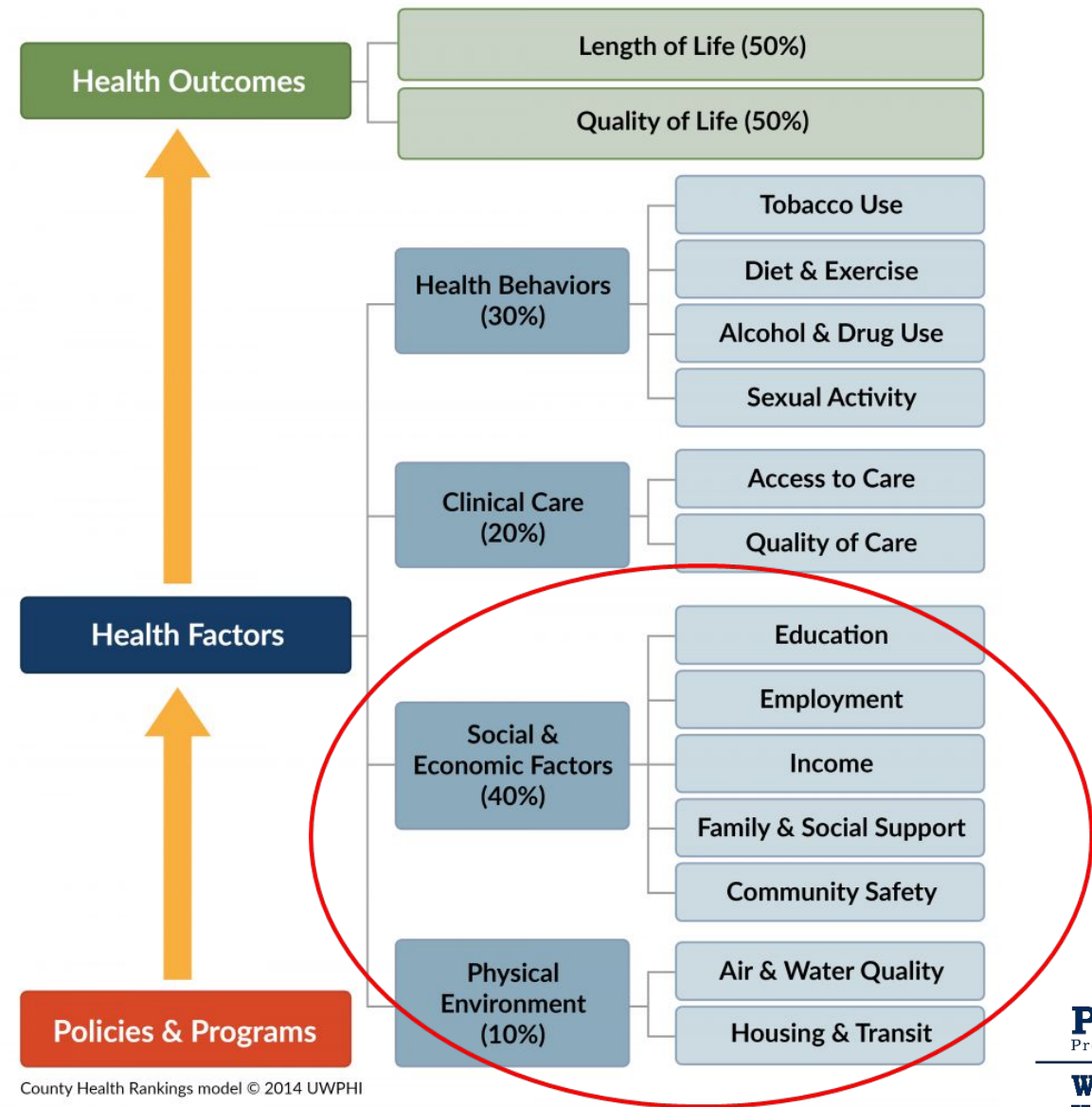
- ★ Background
 - What influences health?
 - Differences in opportunity for health
- ★ Winnebago County data
- ★ What does policy have to do with it?
- ★ WCHD's approach & examples
- ★ Opportunities for LWV



Public Health
Prevent. Promote. Protect.

**Winnebago County
Health Department**

WHAT INFLUENCES HEALTH?



Public Health
Prevent. Promote. Protect.

**Winnebago County
Health Department**

Differences in Opportunity for Health



54903



Public Health
Prevent. Promote. Protect.

**Winnebago County
Health Department**

Equality



Equity



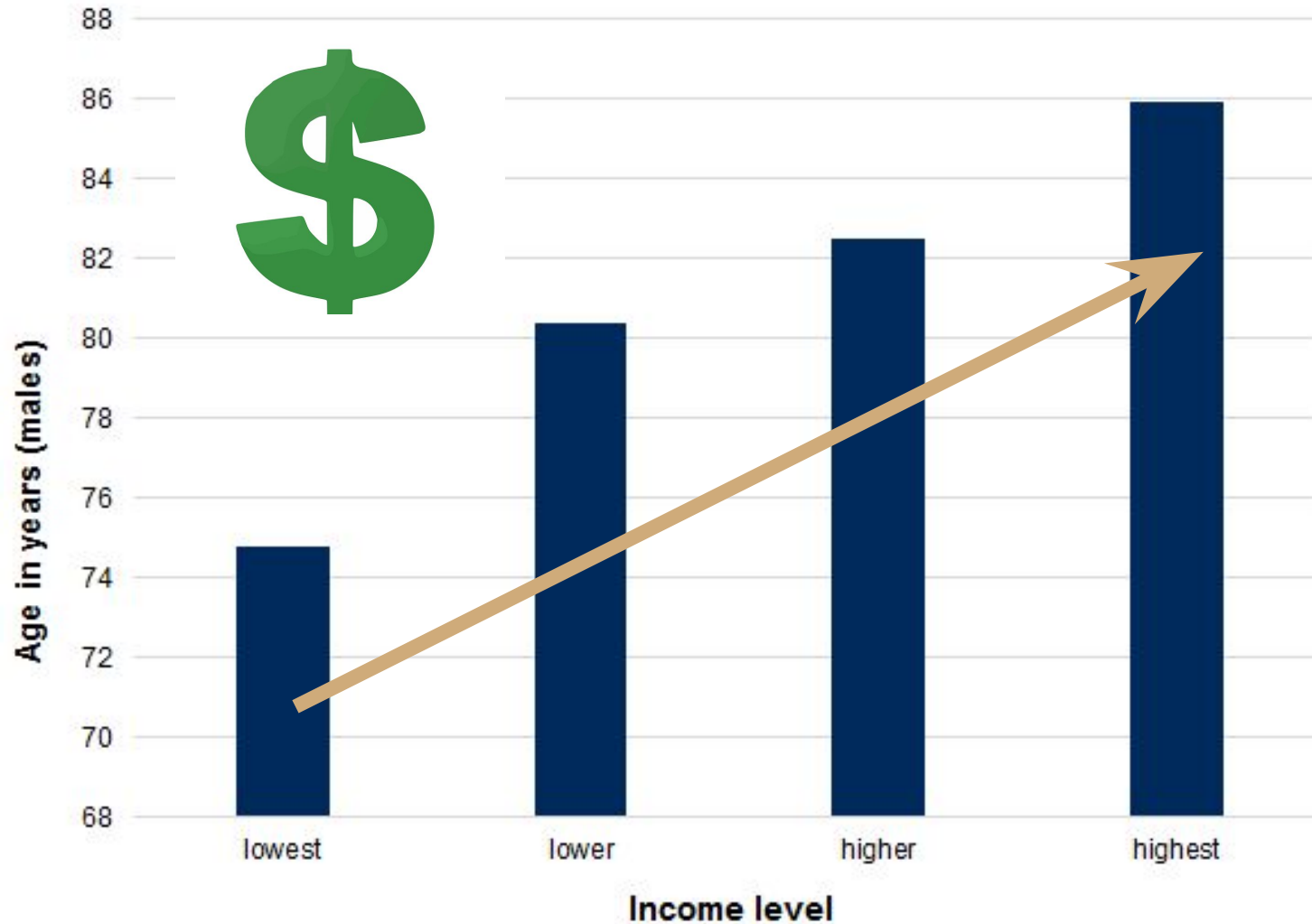
What does the data tell us about Winnebago County?



Public Health
Prevent. Promote. Protect.

**Winnebago County
Health Department**

How much money you make impacts how long you'll live

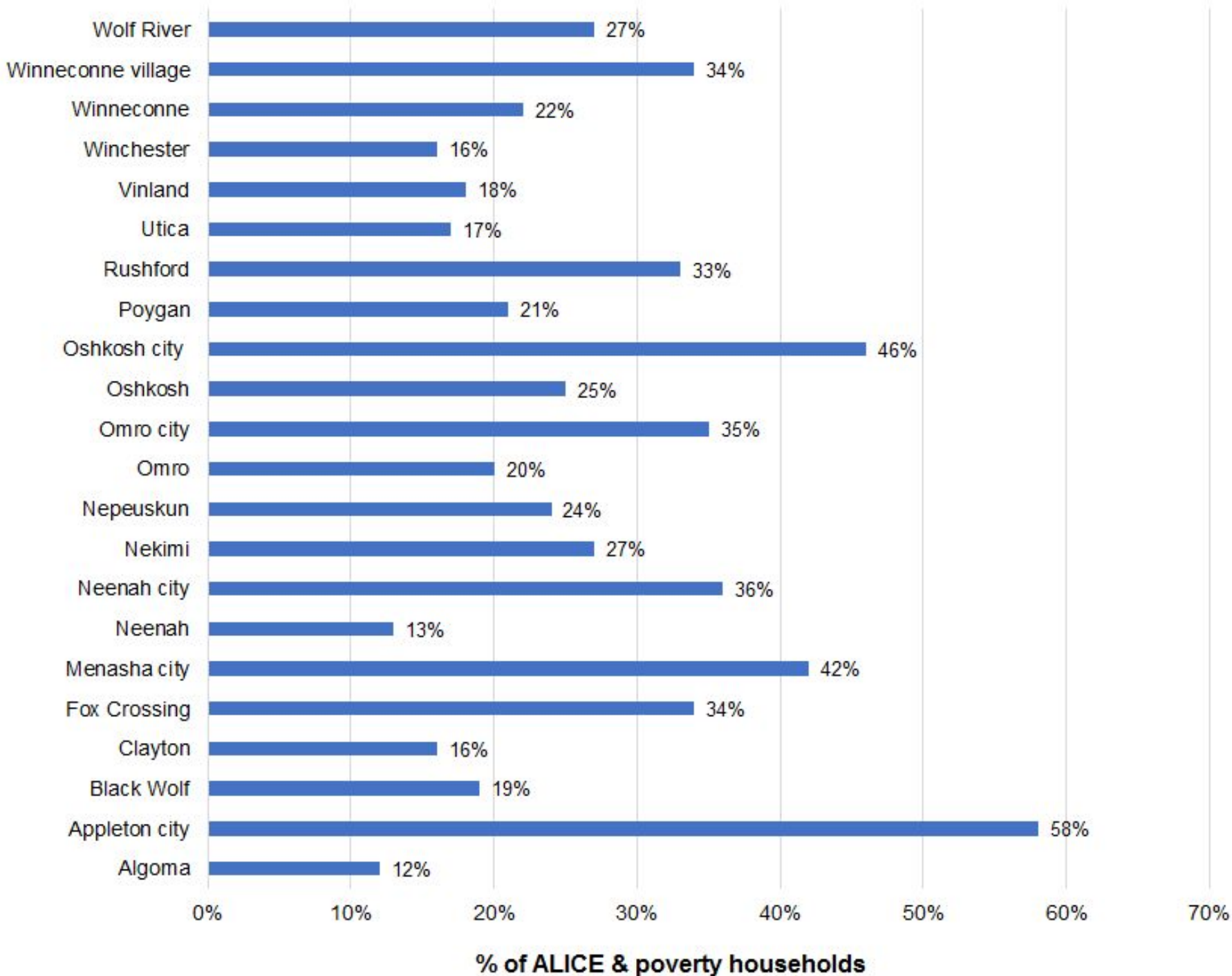


Males with the lowest income are **dying 11 years earlier** than males with the highest income



Public Health
Prevent. Promote. Protect.

**Winnebago County
Health Department**



Households facing financial hardship by municipality

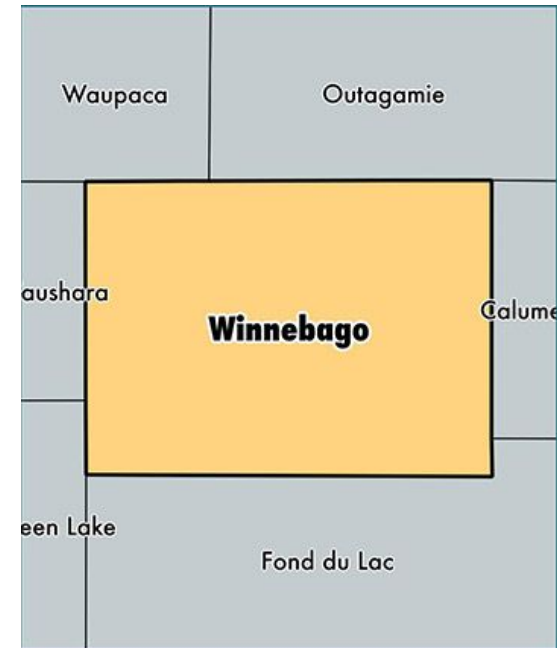


Public Health
Prevent. Promote. Protect.

**Winnebago County
Health Department**

Data: 2016 data, ALICE Report

Racism as a public health issue



Public Health
Prevent. Promote. Protect.

**Winnebago County
Health Department**



healthTIDE

October 4 at 2:35 PM · 🌐



Terrible



MADISON365.COM

New Report Ranks Wisconsin #1 In U.S. For Racial Inequality

A new report lists Wisconsin as the worst state in America for racial...

😞😡😱 46

4 Comments 32 Shares

Winnebago County Shifting Demographics

Racial Ethnic Group	Winnebago
White, non-Hispanic/Latinx	89.3%
Hispanic/Latinx	3.9%
Asian	2.6%
Black or African-American	2.1%
American Indian and Alaska Native	0.6%
Persons reporting two or more races	1.5%

Racial Ethnic Group (Winnebago County Schools)	Elementary	Middle	High
White, non-Hispanic/Latinx	77.7%	80.1%	82.3%
Hispanic/Latinx	7.8%	8.8%	7.1%
Asian	5.2%	4.5%	4.1%
Black or African American	4.1%	3.4%	3.3%
American Indian and Alaska Native	0.4%	0.4%	0.4%
Persons reporting two or more races	4.7%	4.0%	2.8%



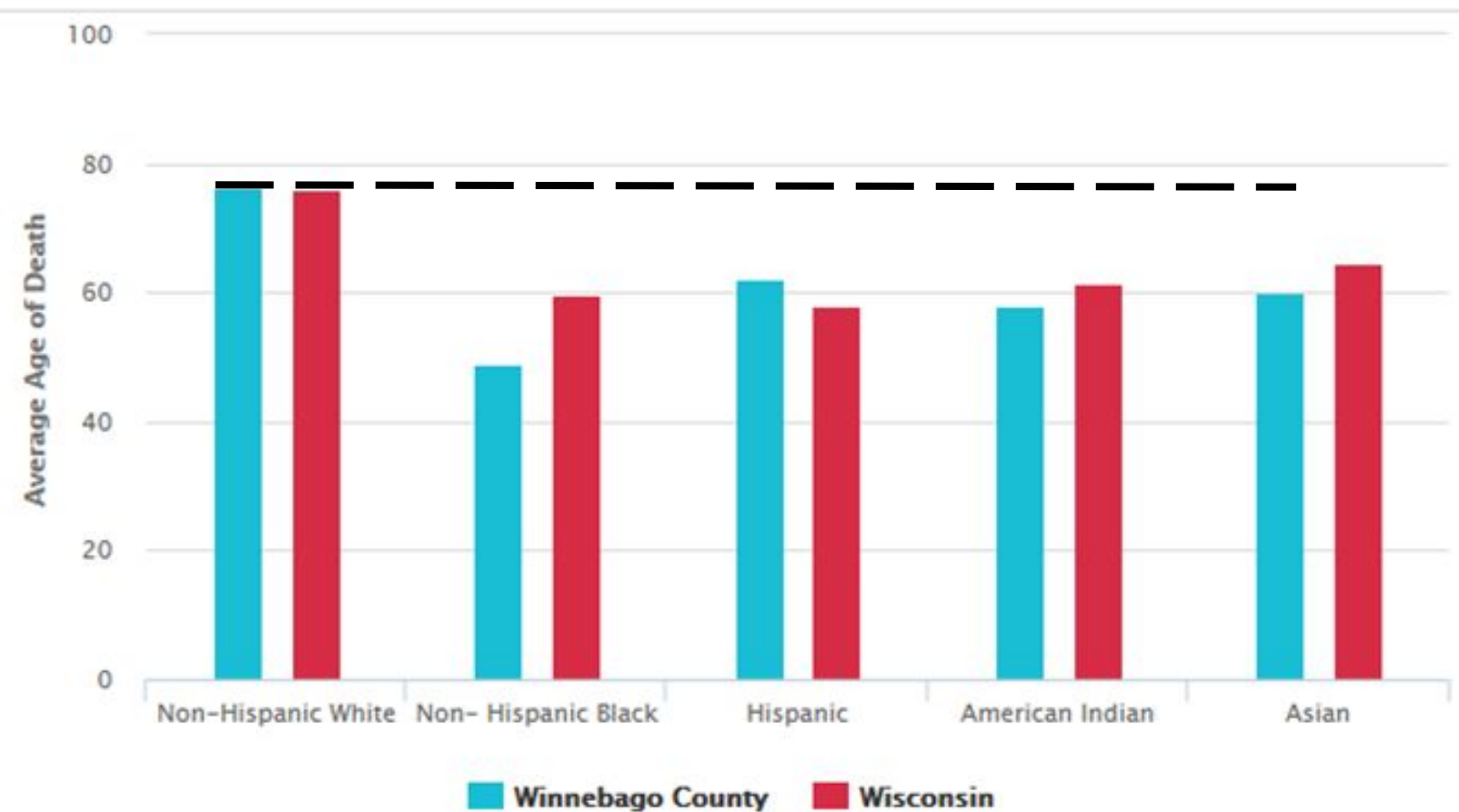
Public Health
Prevent. Promote. Protect.

**Winnebago County
Health Department**

Winnebago County Data

Average Age of Death by Race/Ethnicity

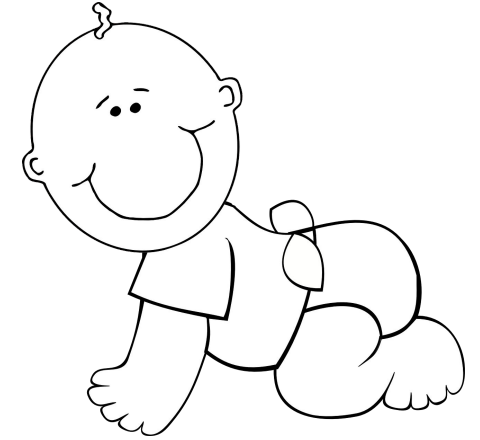
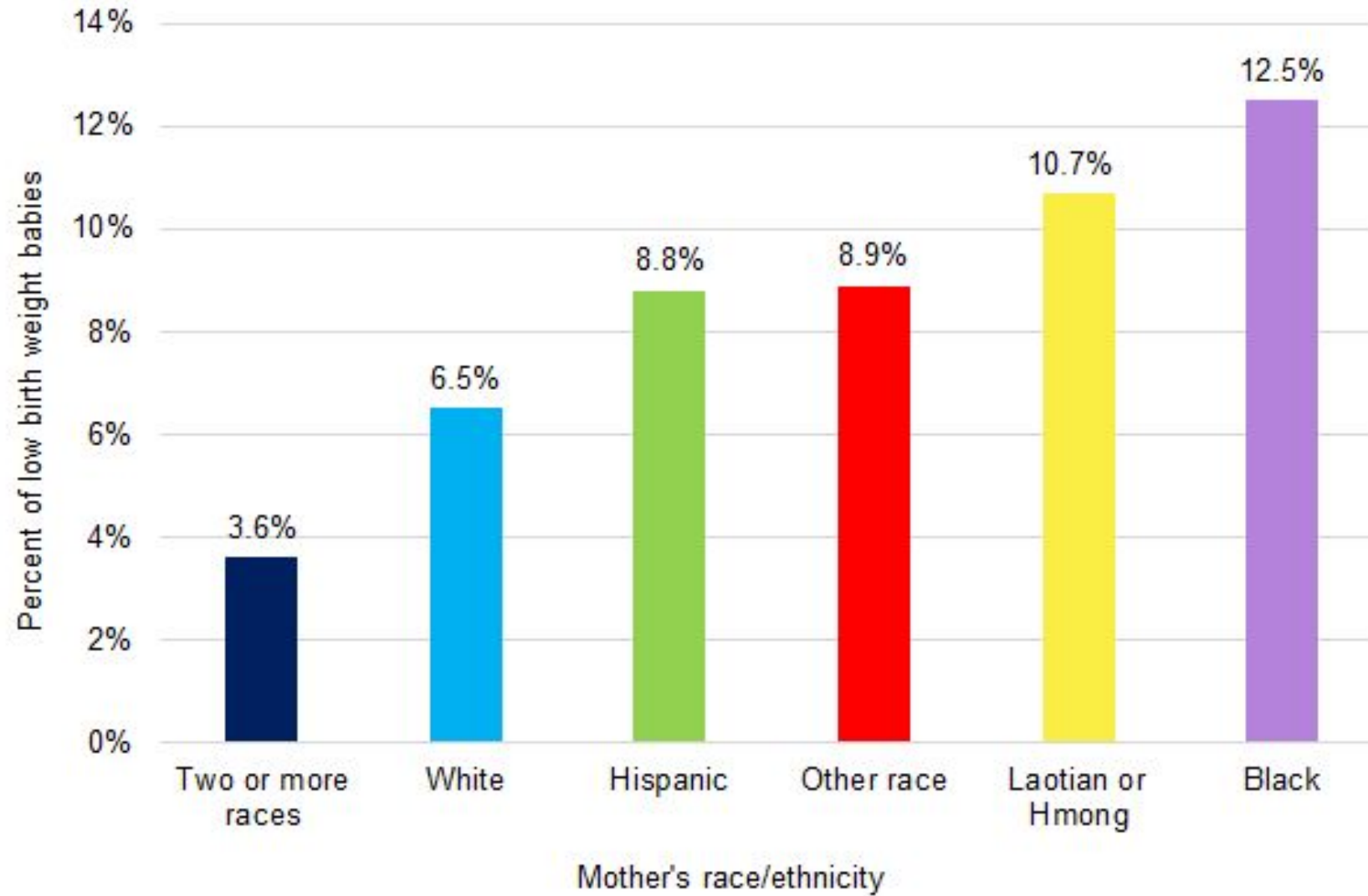
Source: Average Age of Death by Race



Public Health
Prevent. Promote. Protect.

Winnebago County
Health Department

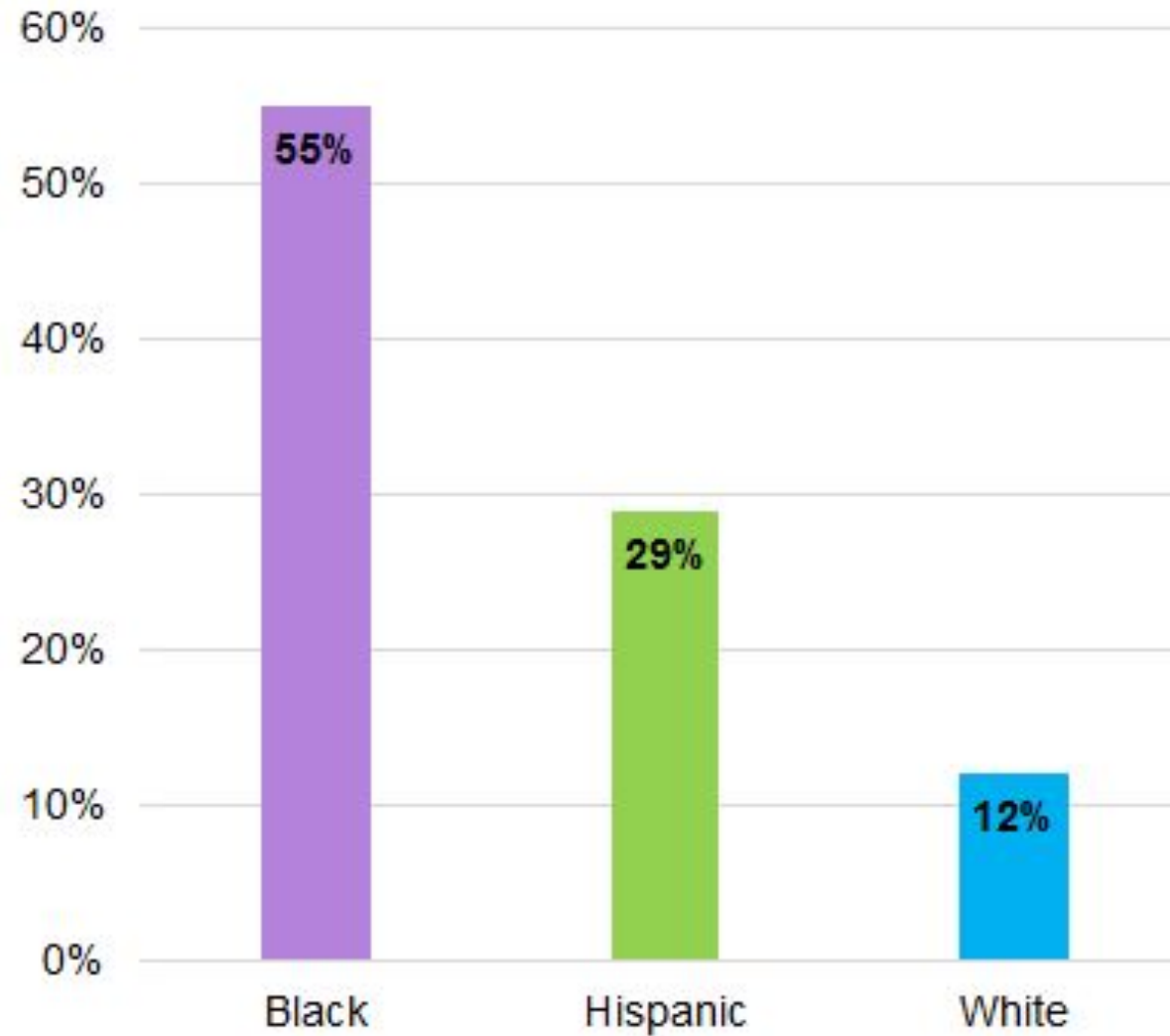
Percent of low birth weight babies by mother's race/ethnicity



Public Health
Prevent. Promote. Protect.

**Winnebago County
Health Department**

Children in Poverty by Race/Ethnicity



Public Health
Prevent. Promote. Protect.

**Winnebago County
Health Department**

WHAT DOES POLICY HAVE TO DO WITH IT?



Public Health
Prevent. Promote. Protect.

**Winnebago County
Health Department**

Policies that have created inequities

- Neighborhood association's beautification goals (i.e. sidewalks)
- Lead service line replacement programs
- School funding based on property taxes
- Zoning laws
- Unequal implementation of the GI Bill after WWII
- Redlining housing segregation
- Employment discrimination based on LGBTQ identity
- Jail population & safety (implicit bias effects - discriminatory sentencing)
- Parental leave laws - paid vs unpaid
- Laws preventing immigrants from getting a driver's license

Creating policies to reduce inequities - video



Public Health
Prevent. Promote. Protect.

**Winnebago County
Health Department**

WCHD's Approach

Health Equity Team

Policy Team

- Health in All Policies (HiAP)
- Groups we're collaborating with for HiAP e.g. City of Oshkosh, Jail Reduction Committee, etc.



WORK ON POLICIES THAT IMPACT INEQUITABLE HEALTH OUTCOMES



Public Health
Prevent. Promote. Protect.

**Winnebago County
Health Department**

Examples of Success

- Letters of support
- Immunization waiver involvement
- Smokefree parks
- City of Neenah including e-cigarettes in smoking ban
- Jail expansion postponed in WC



Public Health
Prevent. Promote. Protect.

**Winnebago County
Health Department**

How to get started at the League...

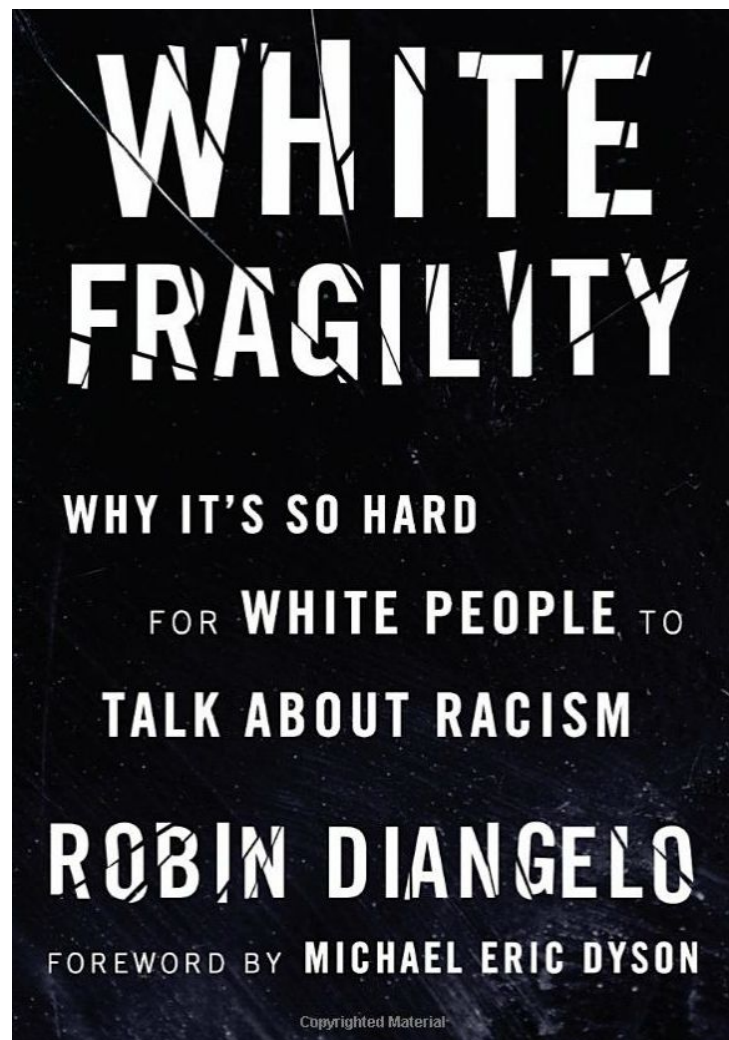
Building organizational capacity

- Internal assessments (rubrics, scorecards, etc.)
- Updating policies & practices
- Member trainings
- Other suggestions?



Public Health
Prevent. Promote. Protect.

**Winnebago County
Health Department**



If it feels hard, you're probably making progress...

Try these steps if you have a “jerk reaction”

1. listen fully
2. reflect thoughtfully
3. respond respectfully



Public Health
Prevent. Promote. Protect.

**Winnebago County
Health Department**

Thank you!

Alana Erickson, MPH

Communications Specialist

aerickson@co.winnebago.wi.us

Niki Euhardy, MPH

Policy & Equity Coordinator

neuhardy@co.winnebago.wi.us



Public Health
Prevent. Promote. Protect.

**Winnebago County
Health Department**