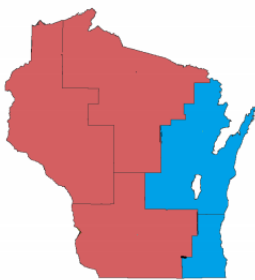


Respiratory Virus Surveillance Report Week Ending March 30, 2019

For more detailed information, please visit

<https://www.dhs.wisconsin.gov/influenza/weekly-influenza-report.pdf>

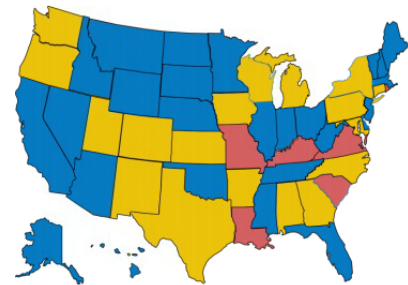
STATE OF WISCONSIN



**REGION V OF US
(WI, MN, IL, MI, OH, IN)**



UNITED STATES



● ILI: HIGH LEVELS ● ILI: MODERATE LEVELS ● ILI: BELOW BASELINE ● ILI: INSUFFICIENT DATA

AT-A-GLANCE:

■ [Weekly Respiratory Report Description](#)

■ **Predominant Virus of the Week:**

Influenza A/H3 is the predominant virus this week.

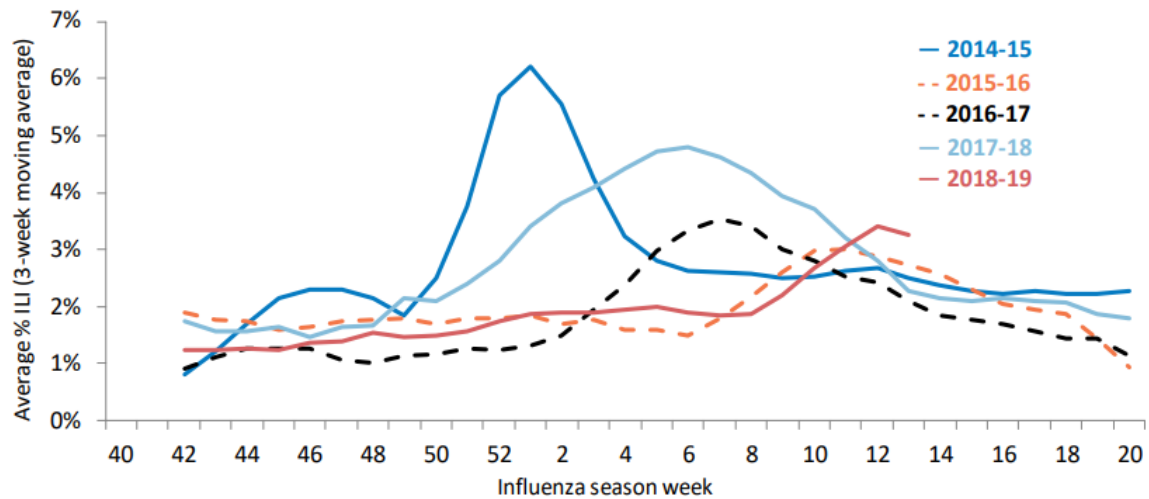
CURRENT ALERTS:

- During week 12, the week ending March 23, flu activity peaked in Wisconsin. High influenza activity will likely continue well into April, 2019.
- 338 flu-associated hospitalizations were reported this week.

INFLUENZA-ASSOCIATED PEDIATRIC DEATHS REPORTED:

	Week 13, 2019	October 1, 2018 to present
Wisconsin	1	2
Nationwide	5	82

ILI activity trend analysis by influenza season, Wisconsin



ILI= Influenza like Illness

The rates of influenza continued to increase in April and is higher than in previous seasons.