

## Respiratory Virus Surveillance Report Week Ending October 20, 2018

For more detailed information, please visit

<https://www.dhs.wisconsin.gov/influenza/weekly-influenza-report.pdf>

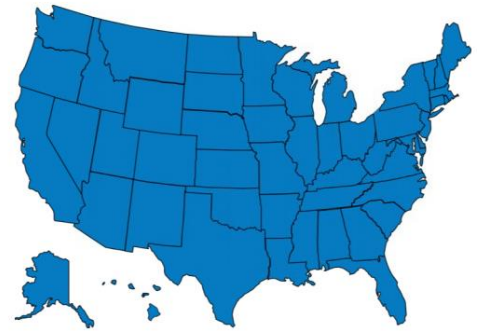
### STATE OF WISCONSIN



### REGION V OF US (WI, MN, IL, MI, OH, IN)



### UNITED STATES



● ILI: HIGH LEVELS    ● ILI: MODERATE LEVELS    ● ILI: BELOW BASELINE    ● ILI: INSUFFICIENT DATA

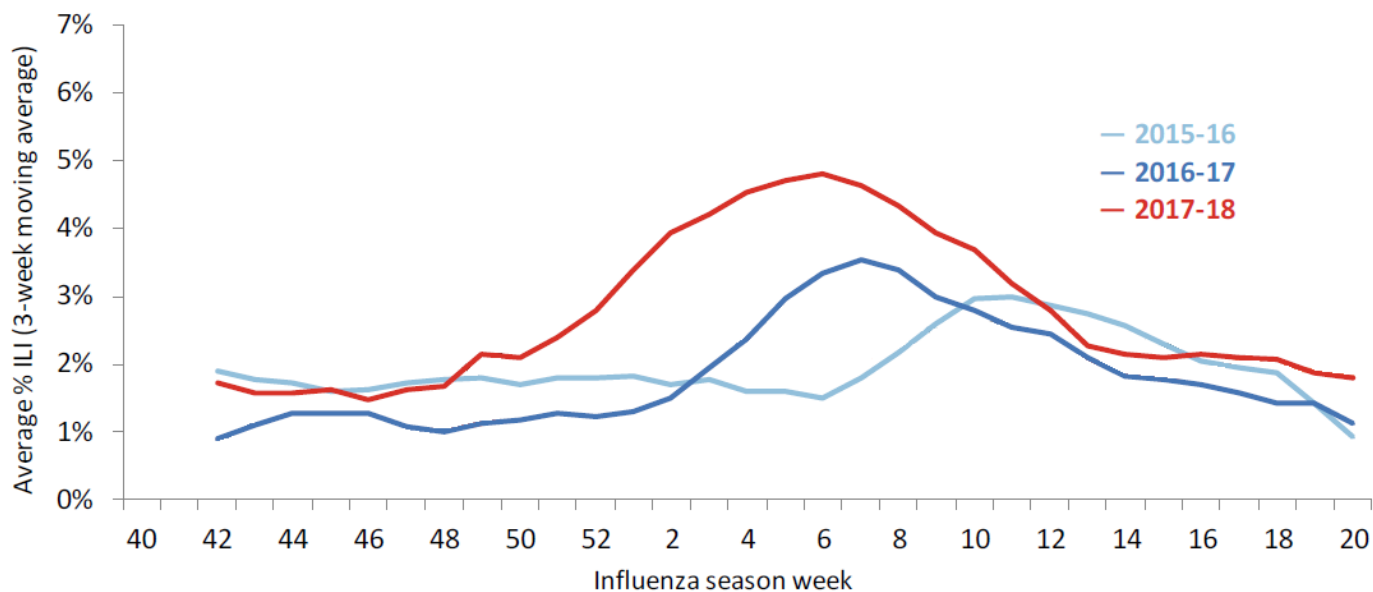
## CURRENT ALERTS:

- This is the first full weekly report for the 2018-2019 influenza season.

### INFLUENZA-ASSOCIATED PEDIATRIC DEATHS REPORTED:

	Week 42, 2018	October 1, 2018 to present
Wisconsin	0	0
Nationwide	0	1

## ILI activity trend analysis by influenza season, Wisconsin



ILI= Influenza like Illness

There were higher rates of influenza this past flu season compared to the previous two flu seasons during the same time frame.