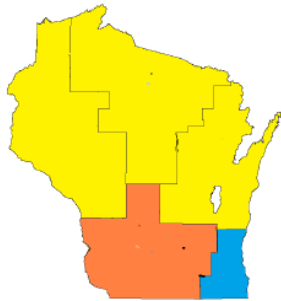


## Respiratory Virus Surveillance Report Week Ending March 2, 2019

For more detailed information, please visit

<https://www.dhs.wisconsin.gov/influenza/weekly-influenza-report.pdf>

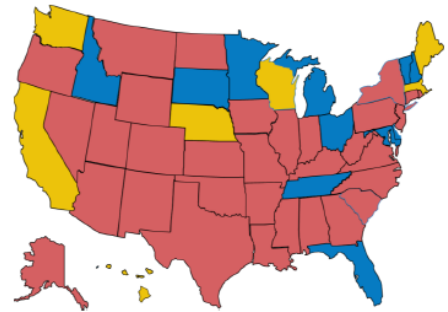
### STATE OF WISCONSIN



### REGION V OF US (WI, MN, IL, MI, OH, IN)



### UNITED STATES



● ILI: HIGH LEVELS    ● ILI: MODERATE LEVELS    ● ILI: BELOW BASELINE    ● ILI: INSUFFICIENT DATA

### AT-A-GLANCE:

#### ■ [Weekly Respiratory Report Description](#)

#### ■ **Predominant Virus of the Week:**

Influenza is the predominant virus this week.

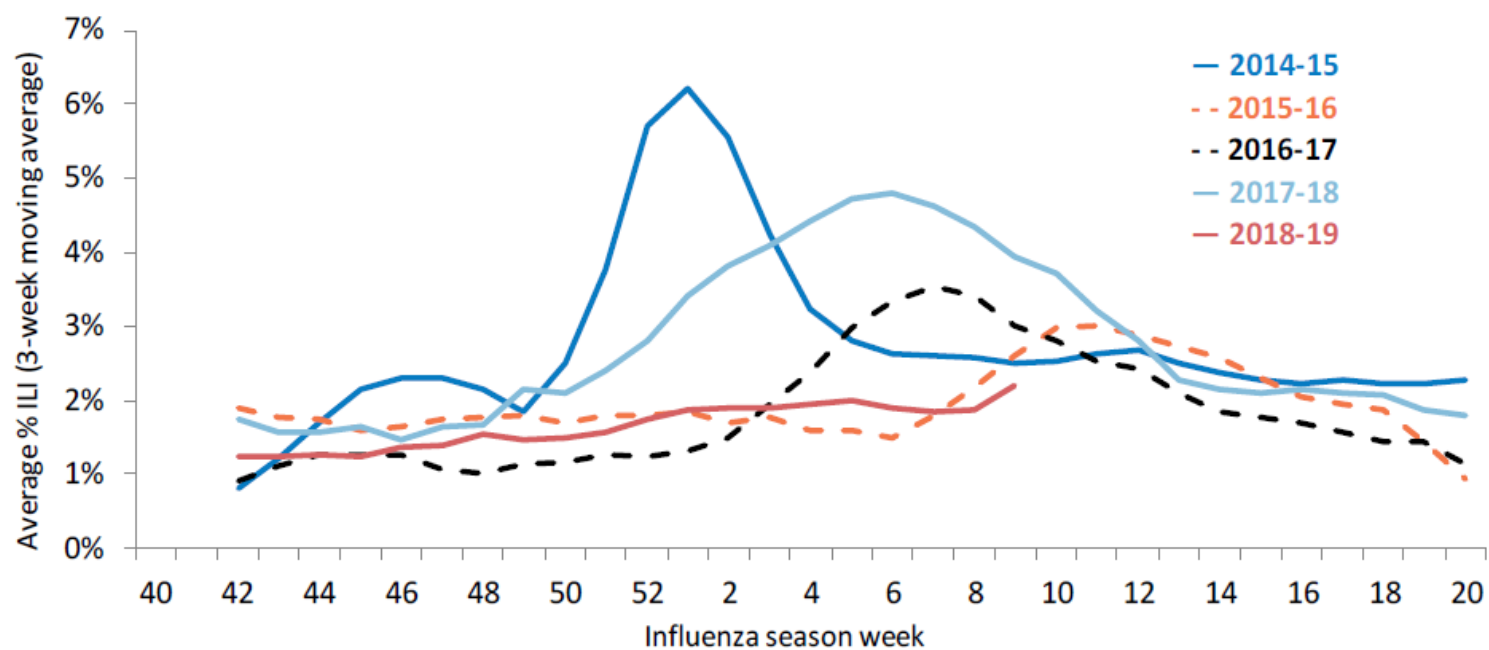
### CURRENT ALERTS:

- Influenza A/H1N1 and A/H3N2 are co-circulating in Wisconsin. A/H3N2 was predominant this week.
- 284 flu-associated hospitalizations were reported this week.

### INFLUENZA-ASSOCIATED PEDIATRIC DEATHS REPORTED:

	Week 9, 2019	October 1, 2018 to present
Wisconsin	0	1
Nationwide	8	64

## ILI activity trend analysis by influenza season, Wisconsin



ILI= Influenza like Illness

There are lower rates of influenza this past flu season compared to the previous two flu seasons during the same time frame.