



# Monthly Investment Performance Analysis

Santa Barbara County Employees' Retirement System

Period Ended: October 31, 2020

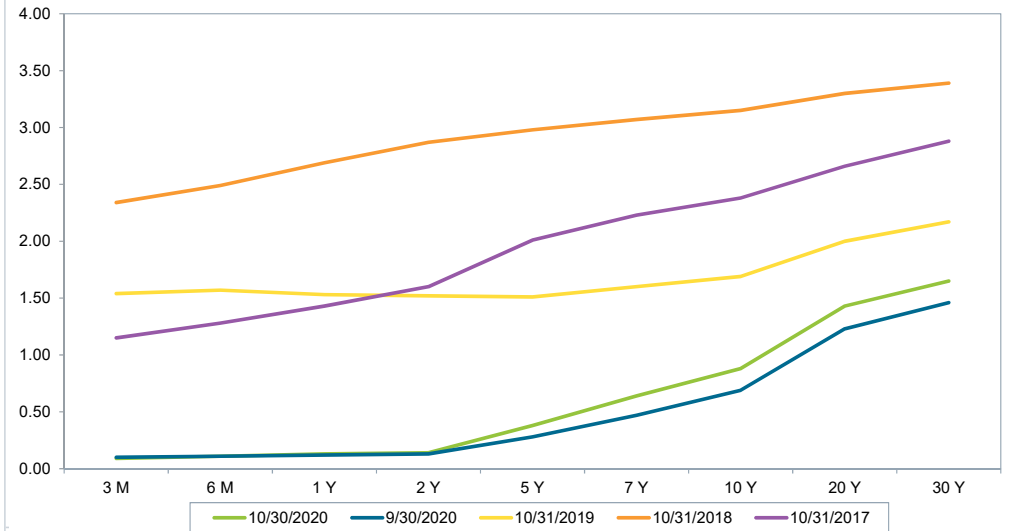


## General Market Commentary

- October saw volatility return to global equity markets as most broad market equity indices posted gains throughout the first half of the month before turning negative by month end. Investors were able to find pockets of positive performance in certain segments of the market despite the sell-off at the end of the month; in the US, mid and small cap stocks ended the month positive while emerging markets stocks posted a positive October return upwards of 2%.
- In the US, stocks initially traded higher on optimism that Congress would pass additional fiscal stimulus prior to US elections, but those hopes were dashed as Democrats and Republicans were unable to reach an agreement. Additionally, uncertainty regarding the upcoming presidential election weighed on investor risk sentiment.
- Both in the US and abroad, stocks traded lower on increasing COVID-19 cases as some European countries reintroduced lockdown measures seen earlier in the year, prompting market participants to anticipate a decline in future economic growth in the region.
- Equity markets posted negative returns in October as the S&P 500 (Cap Wtd) Index returned -2.66% and the MSCI EAFE (Net) Index returned -3.99%. Emerging markets returned 2.06% as measured by the MSCI EM (Net) Index.
- The Bloomberg US Aggregate Bond Index returned -0.45% in October, underperforming the -0.38% return by the Bloomberg US Treasury Intermediate Term Index. International fixed income markets returned 0.25%, as measured by the FTSE Non-US World Gov't Bond Index.
- Public real estate, as measured by the FTSE NAREIT Eq REITs Index (TR), returned -2.61% in October and 2.23% over the trailing five-year period.
- The Cambridge US Private Equity Index returned 5.66% for the trailing one-year period and 10.81% for the trailing five-year period ending June 2020.
- Absolute return strategies, as measured by the HFRI FOF Comp Index, returned 0.23% for the month and 5.44% over the trailing one-year period.
- Crude oil's price fell by 11.01% during the month, and has decreased by 33.94% YoY.

| Economic Indicators                     | Oct-20 | Sep-20 | Oct-19 | 10 Yr  | 20 Yr  |
|---|--------|--------|--------|--------|--------|
| Federal Funds Rate (%)                  | 0.09   | —      | 0.09   | 1.58   | 0.63   |
| Breakeven Inflation - 5 Year (%)        | 1.59   | ▲      | 1.49   | 1.45   | 1.72   |
| Breakeven Inflation - 10 Year (%)       | 1.71   | ▲      | 1.63   | 1.55   | 1.94   |
| Breakeven Inflation - 30 Year (%)       | 1.86   | ▲      | 1.77   | 1.62   | 2.07   |
| Bloomberg US Agg Bond Index - Yield (%) | 1.24   | ▲      | 1.18   | 2.23   | 2.38   |
| Bloomberg US Agg Bond Index - OAS (%)   | 0.54   | ▼      | 0.60   | 0.46   | 0.53   |
| Bloomberg US Agg Credit Index - OAS (%) | 1.19   | ▼      | 1.28   | 1.05   | 1.31   |
| Bloomberg US Corp: HY Index - OAS (%)   | 5.09   | ▼      | 5.17   | 3.92   | 4.76   |
| Capacity Utilization (%)                | 72.75  | ▲      | 71.96  | 76.99  | 76.56  |
| Unemployment Rate (%)                   | 6.9    | ▼      | 7.9    | 3.6    | 6.1    |
| PMI - Manufacturing (%)                 | 59.3   | ▲      | 55.4   | 48.5   | 53.8   |
| Baltic Dry Index - Shipping             | 1,283  | ▼      | 1,725  | 1,731  | 1,124  |
| Consumer Conf (Conf Board)              | 100.90 | ▼      | 101.30 | 126.10 | 95.43  |
| CPI YoY (Headline) (%)                  | 1.2    | ▼      | 1.4    | 1.8    | 1.7    |
| CPI YoY (Core) (%)                      | 1.6    | ▼      | 1.7    | 2.3    | 1.9    |
| PPI YoY (%)                             | -1.1   | ▲      | -1.2   | -0.2   | 1.4    |
| M2 YoY (%)                              | 24.2   | ▲      | 24.1   | 6.4    | 7.2    |
| US Dollar Total Weighted Index          | 116.53 | ▼      | 117.35 | 115.97 | 104.50 |
| WTI Crude Oil per Barrel (\$)           | 36     | ▼      | 40     | 54     | 69     |
| Gold Spot per Oz (\$)                   | 1,879  | ▼      | 1,886  | 1,513  | 1,394  |

## Treasury Yield Curve (%)



| Treasury Yield Curve (%) | Oct-20 | Sep-20 | Oct-19 | Oct-18 | Oct-17 |
|--------------------------|--------|--------|--------|--------|--------|
| 3 Month                  | 0.09   | 0.10   | 1.54   | 2.34   | 1.15   |
| 6 Month                  | 0.11   | 0.11   | 1.57   | 2.49   | 1.28   |
| 1 Year                   | 0.13   | 0.12   | 1.53   | 2.69   | 1.43   |
| 2 Year                   | 0.14   | 0.13   | 1.52   | 2.87   | 1.60   |
| 5 Year                   | 0.38   | 0.28   | 1.51   | 2.98   | 2.01   |
| 7 Year                   | 0.64   | 0.47   | 1.60   | 3.07   | 2.23   |
| 10 Year                  | 0.88   | 0.69   | 1.69   | 3.15   | 2.38   |
| 20 Year                  | 1.43   | 1.23   | 2.00   | 3.30   | 2.66   |
| 30 Year                  | 1.65   | 1.46   | 2.17   | 3.39   | 2.88   |

| Market Performance (%)          | MTD   | QTD   | CYTD   | 1 Yr   | 3 Yr  | 5 Yr  | 7 Yr  | 10 Yr |
|---------------------------------|-------|-------|--------|--------|-------|-------|-------|-------|
| S&P 500 (Cap Wtd)               | -2.66 | -2.66 | 2.77   | 9.71   | 10.42 | 11.71 | 11.53 | 13.01 |
| Russell 2000                    | 2.09  | 2.09  | -6.77  | -0.14  | 2.19  | 7.27  | 6.36  | 9.64  |
| MSCI EAFE (Net)                 | -3.99 | -3.99 | -10.80 | -6.86  | -1.24 | 2.85  | 1.93  | 3.82  |
| MSCI EAFE SC (Net)              | -3.48 | -3.48 | -7.54  | -1.36  | -0.35 | 5.38  | 4.72  | 6.55  |
| MSCI EM (Net)                   | 2.06  | 2.06  | 0.88   | 8.25   | 1.94  | 7.92  | 3.34  | 2.42  |
| Bloomberg US Agg Bond           | -0.45 | -0.45 | 6.32   | 6.19   | 5.07  | 4.08  | 3.78  | 3.55  |
| ICE BofAML 3 Mo US T-Bill       | 0.01  | 0.01  | 0.65   | 0.92   | 1.66  | 1.20  | 0.87  | 0.64  |
| NCREIF ODCE (Gross)             | N/A   | N/A   | -0.12  | 1.39   | 5.18  | 6.64  | 8.60  | 10.27 |
| FTSE NAREIT Eq REITs Index (TR) | -2.61 | -2.61 | -19.69 | -21.38 | -0.36 | 2.23  | 4.99  | 7.12  |
| HFRI FOF Comp Index             | 0.23  | 0.23  | 2.80   | 5.44   | 2.57  | 2.96  | 2.92  | 2.76  |
| Bloomberg Cmtty Index (TR)      | 1.41  | 1.41  | -10.85 | -8.75  | -4.41 | -2.73 | -6.86 | -6.36 |

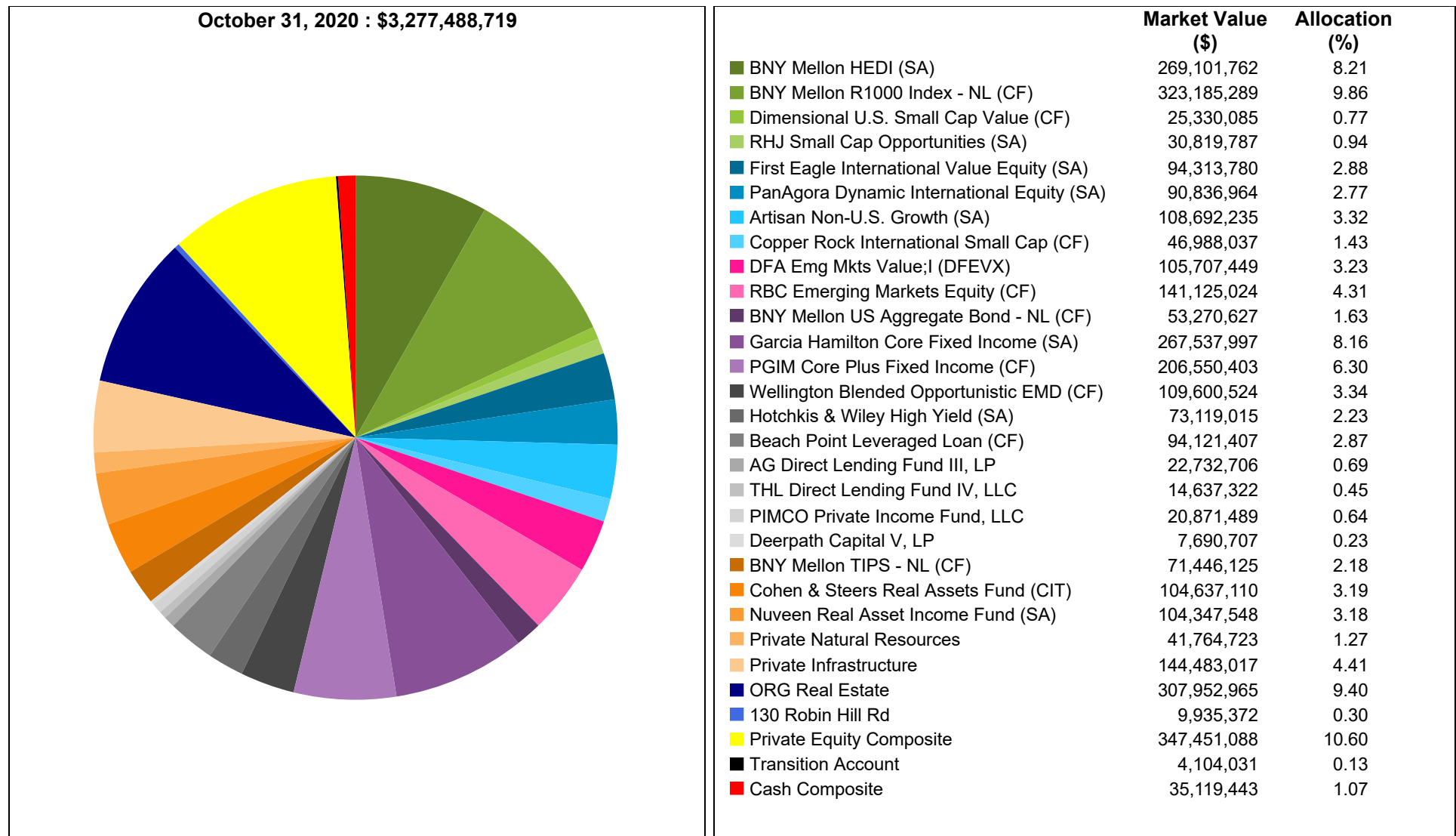
NCREIF performance is reported quarterly; MTD and QTD returns are shown as "N/A" on interim-quarter months and until available. Data shown is as of most recent quarter-end. Treasury data courtesy of the US Department of the Treasury. Economic data courtesy of Bloomberg Professional Service.

| Monthly Portfolio Highlights   |  |
|--|--|
| <p>The Total Fund returned -0.63% for the month of October net of fees, outperforming the Policy Benchmark by 6 basis points. October saw volatility return to global equity markets as most broad market equity indices posted gains throughout the first half of the month before turning negative by month end, primarily due to increases in COVID-19 cases and political uncertainty.</p> |  |
| Market Trend   | Portfolio Effect   |
| U.S. Equity  |  |
| <p>Stocks initially traded higher on optimism that Congress would pass additional fiscal stimulus prior to US elections, but sold off as Democrats and Republicans were unable to reach an agreement. Small cap stocks outpaced large cap stocks, and value outperformed growth.</p>   | <p>The Composite posted a negative return of -2.01%, but outperformed the Russell 3000 by 15 basis points. Dimensional posted the highest absolute return of 4.01%.</p>  |
| Developed Market Non-U.S. Equity   |  |
| <p>Developed Non-US markets experienced a negative month, driven by the increasing COVID-19 cases as some European countries reintroduced lockdown measures seen earlier in the year.</p>  | <p>The Composite posted a negative return of -3.58%, but outperformed the MSCI EAFE Index by 41 basis points. First Eagle was the largest contributor to relative performance with a return of -1.86%.</p>   |
| Emerging Market Equity   |  |
| <p>Emerging markets outperformed their Developed counterparts, and delivered positive results for the month of October.</p>  | <p>The Composite returned 1.00% for the month, underperforming the MSCI Emg Mkts Index by 106 basis points. Both DFA and RBC underperformed for the month, returning 0.25% and 1.57%, respectively.</p>  |
| Core Fixed Income  |  |
| <p>Long-dated US Treasury yields ended higher this month, even though expectations for a pre-election stimulus deal waned.</p>   | <p>The Composite posted a return of -0.48% for the month, underperforming the Bloomberg US Agg Bond Index by 3 basis points. PGIM was the largest detractor to performance, returning -0.69%.</p>  |
| Non-Core Fixed Income  |  |
| <p>Emerging market debt outperformed their counterparts driven by the depreciation of the US dollar against most currencies. High-yield outperformed investment-grade bonds for the month.</p>   | <p>The Composite returned 0.03%, and underperformed the Custom Non-Core Fixed Income Benchmark by 26 basis points. Wellington was the highest absolute performer with a return of 0.21%.</p>   |
| Real Return  |  |
| <p>Oil and gold fell in October. Crude oil's price fell by 11.01% during the month, and has decreased by 33.94% YoY.</p>   | <p>The Composite posted a positive return of 0.04%, underperforming the CPI+4% by 33 basis points, but outperforming the Custom Real Return Benchmark 47 basis points. Cohen &amp; Steers was the lowest absolute performer with a return of -0.94%.</p> |

Total Fund performance excludes 130 RHR and Treasury Cash.

**Santa Barbara County Employees' Retirement System**  
**Asset Allocation By Manager and Schedule of Investable Assets**

**As of October 31, 2020**



| Schedule of Investable Assets Ex Treasury Cash |                             |                    |                |                          |          |
|--|-----------------------------|--------------------|----------------|--------------------------|----------|
| Periods Ending                                 | Beginning Market Value (\$) | Net Cash Flow (\$) | Gain/Loss (\$) | Ending Market Value (\$) | % Return |
| FYTD   | 3,132,902,419               | -28,132,826        | 155,463,099    | 3,260,232,692            | 5.00     |

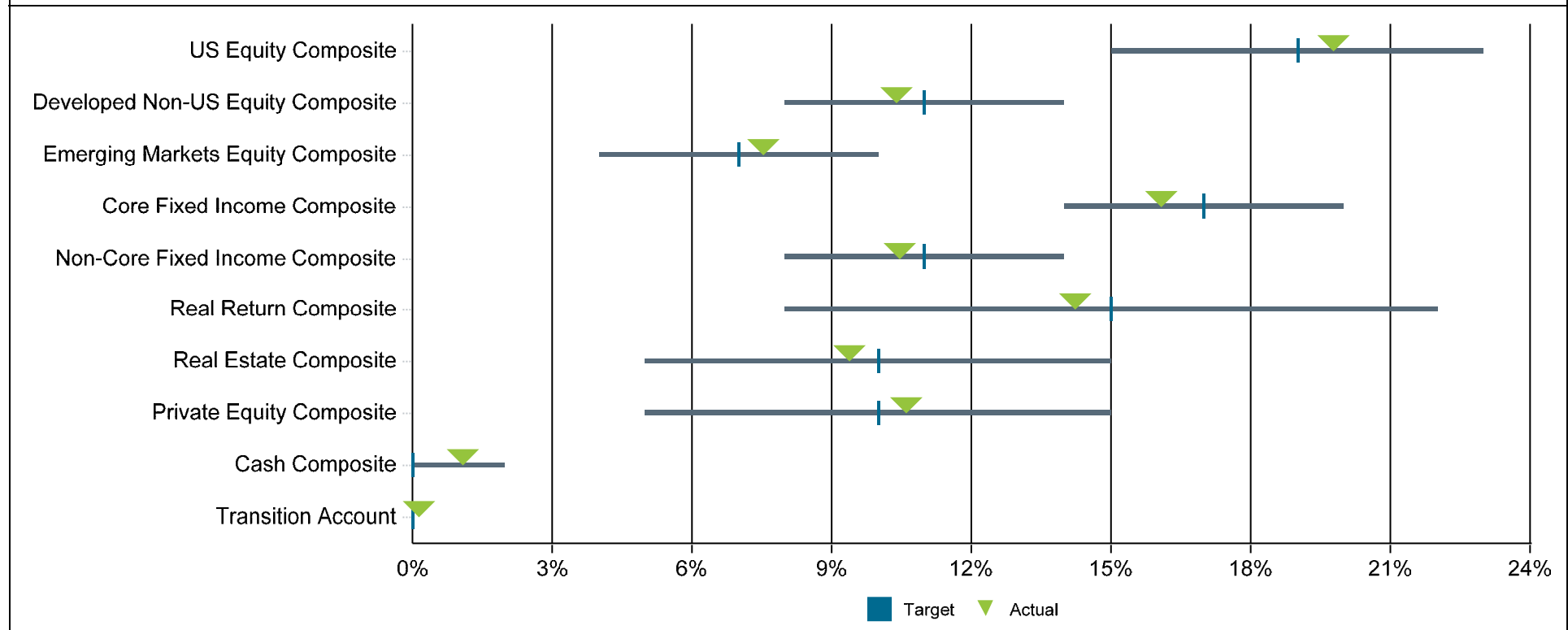
Market values shown are preliminary and subject to change. Performance shown is net of fees and provided by BNY Mellon. Allocations shown may not sum up to 100% exactly due to rounding. Schedule of Investable Assets excludes Treasury Cash. The fiscal year ends 06/30. The cash account contains \$19,511 of settlement fees gained from liquidated managers: Lord Abbett, RBC Mid-Cap Value, Rhumblin HEDI.



**Santa Barbara County Employees' Retirement System**  
**Asset Allocation vs Target Allocation**

**As of October 31, 2020**

|                                   | Market Value<br>(\$) | Allocation<br>(%) | Lower<br>Range<br>(%) | Target<br>(%) | Upper<br>Range<br>(%) |
|-----------------------------------|----------------------|-------------------|-----------------------|---------------|-----------------------|
| Total Fund Composite              | 3,277,488,719        | 100.0             | -                     | 100.0         | -                     |
| US Equity Composite               | 648,436,923          | 19.8              | 15.0                  | 19.0          | 23.0                  |
| Developed Non-US Equity Composite | 340,833,812          | 10.4              | 8.0                   | 11.0          | 14.0                  |
| Emerging Markets Equity Composite | 246,832,473          | 7.5               | 4.0                   | 7.0           | 10.0                  |
| Core Fixed Income Composite       | 527,363,060          | 16.1              | 14.0                  | 17.0          | 20.0                  |
| Non-Core Fixed Income Composite   | 342,773,211          | 10.5              | 8.0                   | 11.0          | 14.0                  |
| Real Return Composite             | 466,680,799          | 14.2              | 8.0                   | 15.0          | 22.0                  |
| Real Estate Composite             | 307,958,508          | 9.4               | 5.0                   | 10.0          | 15.0                  |
| Private Equity Composite          | 347,451,088          | 10.6              | 5.0                   | 10.0          | 15.0                  |
| Cash Composite                    | 35,119,443           | 1.1               | 0.0                   | 0.0           | 2.0                   |
| Transition Account                | 4,104,031            | 0.1               | 0.0                   | 0.0           | 0.0                   |

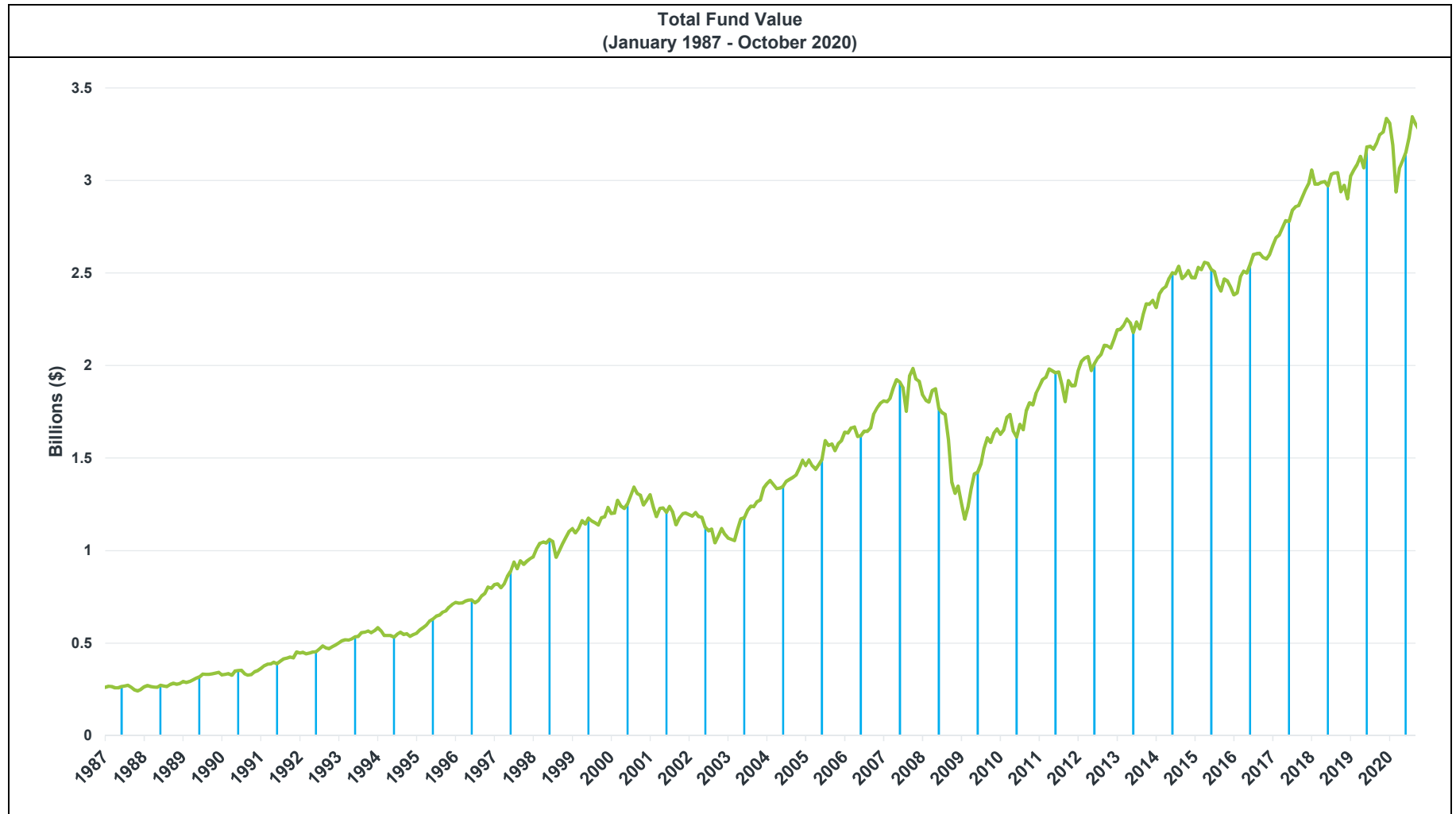


Market values shown are preliminary and subject to change. Allocations shown may not sum up to 100% exactly due to rounding. Market value for the Transition Account represents residual assets from portfolio restructuring.

**Santa Barbara County Employees' Retirement System  
Plan Asset Overview**

**As of October 31, 2020**

|            | Market Value<br>(\$) | Performance (%) |         |         |         |         |         |         |         |         |         |         |              |
|------------|----------------------|-----------------|---------|---------|---------|---------|---------|---------|---------|---------|---------|---------|--------------|
|            |                      | FYTD            | FY 2020 | FY 2019 | FY 2018 | FY 2017 | FY 2016 | FY 2015 | FY 2014 | FY 2013 | FY 2012 | FY 2011 | Since Incep. |
| Total Fund | 3,277,488,719        | 5.00            | -0.10   | 7.74    | 7.80    | 10.49   | 1.37    | 0.42    | 15.25   | 8.10    | 1.99    | 22.01   | 8.06         |



Market values and performance shown are preliminary and subject to change. Performance shown is net of fees and is annualized for periods greater than one year. The fiscal year for Santa Barbara County Employees' Retirement System ends 06/30. Inception date for the Total Fund is 01/01/1987. Total Fund performance excludes Treasury Cash.

**Santa Barbara County Employees' Retirement System**  
**Asset Allocation & Performance**

**As of October 31, 2020**

|  | Allocation           |               | Performance (%) |              |             |              |              |              |              |              |              |                   |
|--|----------------------|---------------|-----------------|--------------|-------------|--------------|--------------|--------------|--------------|--------------|--------------|-------------------|
|  | Market Value (\$)    | %             | MTD             | QTD          | FYTD        | CYTD         | 1 Year       | 3 Years      | 5 Years      | 10 Years     | Since Incep. | Inception Date    |
| <b>Total Fund Composite</b>                      | <b>3,277,488,719</b> | <b>100.00</b> | <b>-0.54</b>    | <b>-0.54</b> | <b>5.00</b> | <b>-0.43</b> | <b>2.49</b>  | <b>5.22</b>  | <b>6.77</b>  | <b>6.61</b>  | <b>8.06</b>  | <b>01/01/1987</b> |
| <b>Total Fund Composite Ex 130 Robin Hill Rd</b> | <b>3,267,553,347</b> | <b>99.70</b>  | <b>-0.63</b>    | <b>-0.63</b> | <b>4.92</b> | <b>-0.53</b> | <b>2.40</b>  | <b>5.20</b>  | <b>6.76</b>  | <b>6.61</b>  | <b>8.06</b>  | <b>01/01/1987</b> |
| SBCERS Policy Benchmark                          |                      |               | -0.69           | -0.69        | 5.04        | 2.71         | 5.48         | 6.25         | 7.80         | 7.16         | N/A          |                   |
| Difference                                       |                      |               | 0.06            | 0.06         | -0.12       | -3.24        | -3.08        | -1.05        | -1.04        | -0.55        | N/A          |                   |
| SBCERS Dynamic Policy Benchmark                  |                      |               | -0.71           | -0.71        | 5.24        | 0.74         | 3.74         | 5.21         | 7.03         | N/A          | N/A          |                   |
| Difference                                       |                      |               | 0.08            | 0.08         | -0.32       | -1.27        | -1.34        | -0.01        | -0.27        | N/A          | N/A          |                   |
| <b>US Equity Composite</b>                       | <b>648,436,923</b>   | <b>19.78</b>  | <b>-2.01</b>    | <b>-2.01</b> | <b>6.93</b> | <b>3.23</b>  | <b>9.63</b>  | <b>10.85</b> | <b>11.64</b> | <b>12.23</b> | <b>10.62</b> | <b>01/01/1987</b> |
| Russell 3000 Index                               |                      |               | -2.16           | -2.16        | 6.85        | 3.14         | 10.15        | 10.04        | 11.48        | 12.80        | 10.37        |                   |
| Difference                                       |                      |               | 0.15            | 0.15         | 0.08        | 0.09         | -0.52        | 0.81         | 0.16         | -0.57        | 0.25         |                   |
| <b>US Large Cap Equity Composite</b>             | <b>592,287,050</b>   | <b>18.07</b>  | <b>-2.32</b>    | <b>-2.32</b> | <b>7.00</b> | <b>4.46</b>  | <b>10.88</b> | <b>12.07</b> | <b>N/A</b>   | <b>N/A</b>   | <b>13.43</b> | <b>06/01/2016</b> |
| Russell 1000 Index                               |                      |               | -2.41           | -2.41        | 6.83        | 3.83         | 10.87        | 10.63        | 11.79        | 13.05        | 12.94        |                   |
| Difference                                       |                      |               | 0.09            | 0.09         | 0.17        | 0.63         | 0.01         | 1.44         | N/A          | N/A          | 0.49         |                   |
| <b>US Small Cap Equity Composite</b>             | <b>56,149,872</b>    | <b>1.71</b>   | <b>1.49</b>     | <b>1.49</b>  | <b>6.24</b> | <b>-9.15</b> | <b>-3.01</b> | <b>-0.61</b> | <b>N/A</b>   | <b>N/A</b>   | <b>6.12</b>  | <b>06/01/2016</b> |
| Russell 2000 Index                               |                      |               | 2.09            | 2.09         | 7.13        | -6.77        | -0.14        | 2.19         | 7.27         | 9.64         | 8.19         |                   |
| Difference                                       |                      |               | -0.60           | -0.60        | -0.89       | -2.38        | -2.87        | -2.80        | N/A          | N/A          | -2.07        |                   |
| <b>Developed Non-US Equity Composite</b>         | <b>340,833,812</b>   | <b>10.40</b>  | <b>-3.58</b>    | <b>-3.58</b> | <b>2.65</b> | <b>-8.81</b> | <b>-5.15</b> | <b>-0.63</b> | <b>3.39</b>  | <b>N/A</b>   | <b>6.38</b>  | <b>07/01/2012</b> |
| MSCI EAFE Index (USD) (Net)                      |                      |               | -3.99           | -3.99        | 0.61        | -10.80       | -6.86        | -1.24        | 2.85         | 3.82         | 5.51         |                   |
| Difference                                       |                      |               | 0.41            | 0.41         | 2.04        | 1.99         | 1.71         | 0.61         | 0.54         | N/A          | 0.87         |                   |
| <b>Emerging Markets Equity Composite</b>         | <b>246,832,473</b>   | <b>7.53</b>   | <b>1.00</b>     | <b>1.00</b>  | <b>8.50</b> | <b>-6.89</b> | <b>-1.27</b> | <b>-0.48</b> | <b>5.73</b>  | <b>N/A</b>   | <b>3.24</b>  | <b>07/01/2012</b> |
| MSCI Emg Mkts Index (USD) (Net)                  |                      |               | 2.06            | 2.06         | 11.82       | 0.88         | 8.25         | 1.94         | 7.92         | 2.42         | 4.44         |                   |
| Difference                                       |                      |               | -1.06           | -1.06        | -3.32       | -7.77        | -9.52        | -2.42        | -2.19        | N/A          | -1.20        |                   |
| <b>Core Fixed Income Composite</b>               | <b>527,363,060</b>   | <b>16.09</b>  | <b>-0.48</b>    | <b>-0.48</b> | <b>0.76</b> | <b>6.63</b>  | <b>6.57</b>  | <b>5.74</b>  | <b>N/A</b>   | <b>N/A</b>   | <b>5.46</b>  | <b>07/01/2017</b> |
| Bloomberg US Agg Bond Index                      |                      |               | -0.45           | -0.45        | 0.17        | 6.32         | 6.19         | 5.07         | 4.08         | 3.55         | 4.83         |                   |
| Difference                                       |                      |               | -0.03           | -0.03        | 0.59        | 0.31         | 0.38         | 0.67         | N/A          | N/A          | 0.63         |                   |
| <b>Non-Core Fixed Income Composite</b>           | <b>342,773,211</b>   | <b>10.46</b>  | <b>0.03</b>     | <b>0.03</b>  | <b>3.31</b> | <b>-1.88</b> | <b>0.73</b>  | <b>1.69</b>  | <b>N/A</b>   | <b>N/A</b>   | <b>2.00</b>  | <b>07/01/2017</b> |
| Custom Non-Core Fixed Income Benchmark           |                      |               | 0.29            | 0.29         | 3.70        | -0.88        | 1.24         | 3.27         | 5.12         | 4.53         | 3.54         |                   |
| Difference                                       |                      |               | -0.26           | -0.26        | -0.39       | -1.00        | -0.51        | -1.58        | N/A          | N/A          | -1.54        |                   |

Performance shown is net of fees and provided by BNY or the manager. Performance shown is preliminary and subject to change. Performance is annualized for periods greater than one year. Total Fund performance excludes Tres. Cash. Indices show N/A for since inception returns when the fund contains more history than the corresponding benchmark. The fiscal year ends 06/30.

**Santa Barbara County Employees' Retirement System**  
**Asset Allocation & Performance**

**As of October 31, 2020**

|   | Allocation         |              | Performance (%) |             |              |              |              |              |              |              |              |                   |
|---|--------------------|--------------|-----------------|-------------|--------------|--------------|--------------|--------------|--------------|--------------|--------------|-------------------|
|   | Market Value (\$)  | %            | MTD             | QTD         | FYTD         | CYTD         | 1 Year       | 3 Years      | 5 Years      | 10 Years     | Since Incep. | Inception Date    |
| <b>Real Return Composite</b>              | <b>466,680,799</b> | <b>14.24</b> | <b>0.04</b>     | <b>0.04</b> | <b>5.39</b>  | <b>-6.24</b> | <b>-4.50</b> | <b>1.91</b>  | <b>N/A</b>   | <b>N/A</b>   | <b>2.34</b>  | <b>07/01/2017</b> |
| Consumer Price Index+4%                   |                    |              | 0.37            | 0.37        | 2.33         | 4.69         | 5.23         | 5.89         | 5.90         | 5.83         | 5.92         |                   |
| Difference                                |                    |              | -0.33           | -0.33       | 3.06         | -10.93       | -9.73        | -3.98        | N/A          | N/A          | -3.58        |                   |
| Custom Real Return Benchmark              |                    |              | -0.43           | -0.43       | 2.39         | -3.31        | -2.13        | 2.43         | N/A          | N/A          | 3.62         |                   |
| Difference                                |                    |              | 0.47            | 0.47        | 3.00         | -2.93        | -2.37        | -0.52        | N/A          | N/A          | -1.28        |                   |
| <b>Real Estate Composite</b>              | <b>307,958,508</b> | <b>9.40</b>  | <b>0.08</b>     | <b>0.08</b> | <b>-0.21</b> | <b>0.58</b>  | <b>2.34</b>  | <b>7.61</b>  | <b>8.79</b>  | <b>10.09</b> | <b>5.95</b>  | <b>04/01/2006</b> |
| NCREIF ODCE Index (AWA) (Net) (1 Qtr Lag) |                    |              | 0.00            | 0.00        | -1.75        | 0.25         | 1.33         | 4.72         | 6.35         | 9.78         | 5.52         |                   |
| Difference                                |                    |              | 0.08            | 0.08        | 1.54         | 0.33         | 1.01         | 2.89         | 2.44         | 0.31         | 0.43         |                   |
| <b>Private Equity Composite</b>           | <b>347,451,088</b> | <b>10.60</b> | <b>1.52</b>     | <b>1.52</b> | <b>14.07</b> | <b>6.28</b>  | <b>7.09</b>  | <b>12.02</b> | <b>12.11</b> | <b>13.37</b> | <b>9.31</b>  | <b>06/01/2006</b> |
| Russell 3000+3% Index (1 Qtr Lag)         |                    |              | 0.00            | 0.00        | 22.93        | 7.67         | 7.85         | 12.55        | 12.90        | 16.32        | 11.67        |                   |
| Difference                                |                    |              | 1.52            | 1.52        | -8.86        | -1.39        | -0.76        | -0.53        | -0.79        | -2.95        | -2.36        |                   |

Performance for the NCREIF ODCE Index (AWA) (Net) (1 Qtr Lag) is available quarterly; interim months assume a 0.00% return.

Performance for the Russell 3000+3% Index (1 Qtr Lag) is calculated quarterly; interim months assume a 0.00% return.



**Santa Barbara County Employees' Retirement System**  
**Asset Allocation & Performance**

**As of October 31, 2020**

|  | Allocation           |               | Performance (%) |              |             |               |               |              |              |              |              |                   |
|--|----------------------|---------------|-----------------|--------------|-------------|---------------|---------------|--------------|--------------|--------------|--------------|-------------------|
|  | Market Value (\$)    | %             | MTD             | QTD          | FYTD        | CYTD          | 1 Year        | 3 Years      | 5 Years      | 10 Years     | Since Incep. | Inception Date    |
| <b>Total Fund Composite</b>                      | <b>3,277,488,719</b> | <b>100.00</b> | <b>-0.54</b>    | <b>-0.54</b> | <b>5.00</b> | <b>-0.43</b>  | <b>2.49</b>   | <b>5.22</b>  | <b>6.77</b>  | <b>6.61</b>  | <b>8.06</b>  | <b>01/01/1987</b> |
| <b>Total Fund Composite Ex 130 Robin Hill Rd</b> | <b>3,267,553,347</b> | <b>99.70</b>  | <b>-0.63</b>    | <b>-0.63</b> | <b>4.92</b> | <b>-0.53</b>  | <b>2.40</b>   | <b>5.20</b>  | <b>6.76</b>  | <b>6.61</b>  | <b>8.06</b>  | <b>01/01/1987</b> |
| SBCERS Policy Benchmark                          |                      |               | -0.69           | -0.69        | 5.04        | 2.71          | 5.48          | 6.25         | 7.80         | 7.16         | N/A          |                   |
| Difference                                       |                      |               | 0.06            | 0.06         | -0.12       | -3.24         | -3.08         | -1.05        | -1.04        | -0.55        | N/A          |                   |
| SBCERS Dynamic Policy Benchmark                  |                      |               | -0.71           | -0.71        | 5.24        | 0.74          | 3.74          | 5.21         | 7.03         | N/A          | N/A          |                   |
| Difference                                       |                      |               | 0.08            | 0.08         | -0.32       | -1.27         | -1.34         | -0.01        | -0.27        | N/A          | N/A          |                   |
| <b>US Equity Composite</b>                       | <b>648,436,923</b>   | <b>19.78</b>  | <b>-2.01</b>    | <b>-2.01</b> | <b>6.93</b> | <b>3.23</b>   | <b>9.63</b>   | <b>10.85</b> | <b>11.64</b> | <b>12.23</b> | <b>10.62</b> | <b>01/01/1987</b> |
| Russell 3000 Index                               |                      |               | -2.16           | -2.16        | 6.85        | 3.14          | 10.15         | 10.04        | 11.48        | 12.80        | 10.37        |                   |
| Difference                                       |                      |               | 0.15            | 0.15         | 0.08        | 0.09          | -0.52         | 0.81         | 0.16         | -0.57        | 0.25         |                   |
| <b>US Large Cap Equity Composite</b>             | <b>592,287,050</b>   | <b>18.07</b>  | <b>-2.32</b>    | <b>-2.32</b> | <b>7.00</b> | <b>4.46</b>   | <b>10.88</b>  | <b>12.07</b> | <b>N/A</b>   | <b>N/A</b>   | <b>13.43</b> | <b>06/01/2016</b> |
| Russell 1000 Index                               |                      |               | -2.41           | -2.41        | 6.83        | 3.83          | 10.87         | 10.63        | 11.79        | 13.05        | 12.94        |                   |
| Difference                                       |                      |               | 0.09            | 0.09         | 0.17        | 0.63          | 0.01          | 1.44         | N/A          | N/A          | 0.49         |                   |
| <b>BNY Mellon HEDI (SA)</b>                      | <b>269,101,762</b>   | <b>8.21</b>   | <b>-2.34</b>    | <b>-2.34</b> | <b>7.06</b> | <b>4.67</b>   | <b>10.30</b>  | <b>13.44</b> | <b>13.48</b> | <b>N/A</b>   | <b>11.13</b> | <b>05/01/2019</b> |
| Russell 1000 Index                               |                      |               | -2.41           | -2.41        | 6.83        | 3.83          | 10.87         | 10.63        | 11.79        | 13.05        | 9.80         |                   |
| Difference                                       |                      |               | 0.07            | 0.07         | 0.23        | 0.84          | -0.57         | 2.81         | 1.69         | N/A          | 1.33         |                   |
| <b>BNY Mellon R1000 Index - NL (CF)</b>          | <b>323,185,289</b>   | <b>9.86</b>   | <b>-2.30</b>    | <b>-2.30</b> | <b>6.95</b> | <b>4.25</b>   | <b>11.31</b>  | <b>10.87</b> | <b>11.94</b> | <b>N/A</b>   | <b>10.11</b> | <b>05/01/2019</b> |
| Russell 1000 Index                               |                      |               | -2.41           | -2.41        | 6.83        | 3.83          | 10.87         | 10.63        | 11.79        | 13.05        | 9.80         |                   |
| Difference                                       |                      |               | 0.11            | 0.11         | 0.12        | 0.42          | 0.44          | 0.24         | 0.15         | N/A          | 0.31         |                   |
| <b>US Small Cap Equity Composite</b>             | <b>56,149,872</b>    | <b>1.71</b>   | <b>1.49</b>     | <b>1.49</b>  | <b>6.24</b> | <b>-9.15</b>  | <b>-3.01</b>  | <b>-0.61</b> | <b>N/A</b>   | <b>N/A</b>   | <b>6.12</b>  | <b>06/01/2016</b> |
| Russell 2000 Index                               |                      |               | 2.09            | 2.09         | 7.13        | -6.77         | -0.14         | 2.19         | 7.27         | 9.64         | 8.19         |                   |
| Difference                                       |                      |               | -0.60           | -0.60        | -0.89       | -2.38         | -2.87         | -2.80        | N/A          | N/A          | -2.07        |                   |
| <b>Dimensional U.S. Small Cap Value (CF)</b>     | <b>25,330,085</b>    | <b>0.77</b>   | <b>4.01</b>     | <b>4.01</b>  | <b>7.77</b> | <b>-19.74</b> | <b>-14.15</b> | <b>-6.36</b> | <b>1.47</b>  | <b>6.97</b>  | <b>5.89</b>  | <b>04/01/2005</b> |
| Russell 2000 Index                               |                      |               | 2.09            | 2.09         | 7.13        | -6.77         | -0.14         | 2.19         | 7.27         | 9.64         | 7.51         |                   |
| Difference                                       |                      |               | 1.92            | 1.92         | 0.64        | -12.97        | -14.01        | -8.55        | -5.80        | -2.67        | -1.62        |                   |
| <b>RHJ Small Cap Opportunities (SA)</b>          | <b>30,819,787</b>    | <b>0.94</b>   | <b>-0.50</b>    | <b>-0.50</b> | <b>5.03</b> | <b>1.86</b>   | <b>8.54</b>   | <b>5.34</b>  | <b>N/A</b>   | <b>N/A</b>   | <b>10.98</b> | <b>06/01/2016</b> |
| Russell 2000 Index                               |                      |               | 2.09            | 2.09         | 7.13        | -6.77         | -0.14         | 2.19         | 7.27         | 9.64         | 8.19         |                   |
| Difference                                       |                      |               | -2.59           | -2.59        | -2.10       | 8.63          | 8.68          | 3.15         | N/A          | N/A          | 2.79         |                   |

Performance shown is net of fees and provided by BNY Mellon or the manager. Performance shown is preliminary and subject to change. Performance is annualized for periods greater than one year. Total Fund performance excludes Treasury Cash. Indices show N/A for since inception returns when the fund contains more history than the corresponding benchmark. The fiscal year ends 06/30.

**Santa Barbara County Employees' Retirement System**  
**Asset Allocation & Performance**

**As of October 31, 2020**

|  | Allocation         |              | Performance (%) |              |              |               |               |              |              |             |              |                   |
|--|--------------------|--------------|-----------------|--------------|--------------|---------------|---------------|--------------|--------------|-------------|--------------|-------------------|
|  | Market Value (\$)  | %            | MTD             | QTD          | FYTD         | CYTD          | 1 Year        | 3 Years      | 5 Years      | 10 Years    | Since Incep. | Inception Date    |
| <b>Developed Non-US Equity Composite</b>           | <b>340,833,812</b> | <b>10.40</b> | <b>-3.58</b>    | <b>-3.58</b> | <b>2.65</b>  | <b>-8.81</b>  | <b>-5.15</b>  | <b>-0.63</b> | <b>3.39</b>  | <b>N/A</b>  | <b>6.38</b>  | <b>07/01/2012</b> |
| MSCI EAFE Index (USD) (Net)                        |                    |              | -3.99           | -3.99        | 0.61         | -10.80        | -6.86         | -1.24        | 2.85         | 3.82        | 5.51         |                   |
| Difference   |                    |              | 0.41            | 0.41         | 2.04         | 1.99          | 1.71          | 0.61         | 0.54         | N/A         | 0.87         |                   |
| <b>First Eagle International Value Equity (SA)</b> | <b>94,313,780</b>  | <b>2.88</b>  | <b>-1.86</b>    | <b>-1.86</b> | <b>2.63</b>  | <b>-4.79</b>  | <b>-2.06</b>  | <b>0.79</b>  | <b>3.85</b>  | <b>N/A</b>  | <b>2.79</b>  | <b>06/01/2014</b> |
| MSCI EAFE Index (USD) (Net)                        |                    |              | -3.99           | -3.99        | 0.61         | -10.80        | -6.86         | -1.24        | 2.85         | 3.82        | 1.16         |                   |
| Difference   |                    |              | 2.13            | 2.13         | 2.02         | 6.01          | 4.80          | 2.03         | 1.00         | N/A         | 1.63         |                   |
| <b>PanAgora Dynamic International Equity (SA)</b>  | <b>90,836,964</b>  | <b>2.77</b>  | <b>-3.52</b>    | <b>-3.52</b> | <b>1.40</b>  | <b>-12.10</b> | <b>-8.62</b>  | <b>-3.80</b> | <b>1.84</b>  | <b>4.37</b> | <b>7.17</b>  | <b>05/01/2009</b> |
| MSCI EAFE Index (USD) (Net)                        |                    |              | -3.99           | -3.99        | 0.61         | -10.80        | -6.86         | -1.24        | 2.85         | 3.82        | 6.52         |                   |
| Difference   |                    |              | 0.47            | 0.47         | 0.79         | -1.30         | -1.76         | -2.56        | -1.01        | 0.55        | 0.65         |                   |
| <b>Artisan Non-U.S. Growth (SA)</b>                | <b>108,692,235</b> | <b>3.32</b>  | <b>-4.86</b>    | <b>-4.86</b> | <b>1.68</b>  | <b>-6.71</b>  | <b>-2.36</b>  | <b>3.57</b>  | <b>5.16</b>  | <b>N/A</b>  | <b>4.38</b>  | <b>02/01/2014</b> |
| MSCI EAFE Index (USD) (Net)                        |                    |              | -3.99           | -3.99        | 0.61         | -10.80        | -6.86         | -1.24        | 2.85         | 3.82        | 2.28         |                   |
| Difference   |                    |              | -0.87           | -0.87        | 1.07         | 4.09          | 4.50          | 4.81         | 2.31         | N/A         | 2.10         |                   |
| <b>Copper Rock International Small Cap (CF)</b>    | <b>46,988,037</b>  | <b>1.43</b>  | <b>-4.11</b>    | <b>-4.11</b> | <b>7.66</b>  | <b>-14.33</b> | <b>-10.23</b> | <b>-6.04</b> | <b>-0.17</b> | <b>N/A</b>  | <b>3.30</b>  | <b>03/01/2013</b> |
| MSCI EAFE Sm Cap Index (USD) (Net)                 |                    |              | -3.48           | -3.48        | 6.41         | -7.54         | -1.36         | -0.35        | 5.38         | 6.55        | 6.60         |                   |
| Difference   |                    |              | -0.63           | -0.63        | 1.25         | -6.79         | -8.87         | -5.69        | -5.55        | N/A         | -3.30        |                   |
| <b>Emerging Markets Equity Composite</b>           | <b>246,832,473</b> | <b>7.53</b>  | <b>1.00</b>     | <b>1.00</b>  | <b>8.50</b>  | <b>-6.89</b>  | <b>-1.27</b>  | <b>-0.48</b> | <b>5.73</b>  | <b>N/A</b>  | <b>3.24</b>  | <b>07/01/2012</b> |
| MSCI Emg Mkts Index (USD) (Net)                    |                    |              | 2.06            | 2.06         | 11.82        | 0.88          | 8.25          | 1.94         | 7.92         | 2.42        | 4.44         |                   |
| Difference   |                    |              | -1.06           | -1.06        | -3.32        | -7.77         | -9.52         | -2.42        | -2.19        | N/A         | -1.20        |                   |
| <b>DFA Emg Mkts Value;I (DFEVX)</b>                | <b>105,707,449</b> | <b>3.23</b>  | <b>0.25</b>     | <b>0.25</b>  | <b>5.01</b>  | <b>-14.86</b> | <b>-9.75</b>  | <b>-4.97</b> | <b>4.23</b>  | <b>N/A</b>  | <b>-0.17</b> | <b>05/01/2013</b> |
| MSCI Emg Mkts Index (USD) (Net)                    |                    |              | 2.06            | 2.06         | 11.82        | 0.88          | 8.25          | 1.94         | 7.92         | 2.42        | 3.28         |                   |
| Difference   |                    |              | -1.81           | -1.81        | -6.81        | -15.74        | -18.00        | -6.91        | -3.69        | N/A         | -3.45        |                   |
| <b>RBC Emerging Markets Equity (CF)</b>            | <b>141,125,024</b> | <b>4.31</b>  | <b>1.57</b>     | <b>1.57</b>  | <b>11.27</b> | <b>0.12</b>   | <b>6.20</b>   | <b>3.47</b>  | <b>N/A</b>   | <b>N/A</b>  | <b>7.44</b>  | <b>09/01/2016</b> |
| MSCI Emg Mkts Index (USD) (Net)                    |                    |              | 2.06            | 2.06         | 11.82        | 0.88          | 8.25          | 1.94         | 7.92         | 2.42        | 7.66         |                   |
| Difference   |                    |              | -0.49           | -0.49        | -0.55        | -0.76         | -2.05         | 1.53         | N/A          | N/A         | -0.22        |                   |

Performance shown is net of fees and provided by BNY Mellon or the manager. Performance shown is preliminary and subject to change. Performance is annualized for periods greater than one year. Total Fund performance excludes Treasury Cash. Indices show N/A for since inception returns when the fund contains more history than the corresponding benchmark. The fiscal year ends 06/30.

**Santa Barbara County Employees' Retirement System**  
**Asset Allocation & Performance**

**As of October 31, 2020**

|  | Allocation         |              | Performance (%) |              |             |              |              |             |             |            |              |                   |
|--|--------------------|--------------|-----------------|--------------|-------------|--------------|--------------|-------------|-------------|------------|--------------|-------------------|
|  | Market Value (\$)  | %            | MTD             | QTD          | FYTD        | CYTD         | 1 Year       | 3 Years     | 5 Years     | 10 Years   | Since Incep. | Inception Date    |
| <b>Core Fixed Income Composite</b>               | <b>527,363,060</b> | <b>16.09</b> | <b>-0.48</b>    | <b>-0.48</b> | <b>0.76</b> | <b>6.63</b>  | <b>6.57</b>  | <b>5.74</b> | <b>N/A</b>  | <b>N/A</b> | <b>5.46</b>  | <b>07/01/2017</b> |
| Bloomberg US Agg Bond Index                      |                    |              | -0.45           | -0.45        | 0.17        | 6.32         | 6.19         | 5.07        | 4.08        | 3.55       | 4.83         |                   |
| Difference                                       |                    |              | -0.03           | -0.03        | 0.59        | 0.31         | 0.38         | 0.67        | N/A         | N/A        | 0.63         |                   |
| <b>BNY Mellon US Aggregate Bond - NL (CF)</b>    | <b>53,270,627</b>  | <b>1.63</b>  | <b>-0.46</b>    | <b>-0.46</b> | <b>0.13</b> | <b>6.27</b>  | <b>6.12</b>  | <b>N/A</b>  | <b>N/A</b>  | <b>N/A</b> | <b>7.96</b>  | <b>05/01/2019</b> |
| Bloomberg US Agg Bond Index                      |                    |              | -0.45           | -0.45        | 0.17        | 6.32         | 6.19         | 5.07        | 4.08        | 3.55       | 8.01         |                   |
| Difference                                       |                    |              | -0.01           | -0.01        | -0.04       | -0.05        | -0.07        | N/A         | N/A         | N/A        | -0.05        |                   |
| <b>Garcia Hamilton Core Fixed Income (SA)</b>    | <b>267,537,997</b> | <b>8.16</b>  | <b>-0.32</b>    | <b>-0.32</b> | <b>0.41</b> | <b>7.38</b>  | <b>7.09</b>  | <b>5.43</b> | <b>N/A</b>  | <b>N/A</b> | <b>5.05</b>  | <b>09/01/2017</b> |
| Bloomberg US Agg Bond Index                      |                    |              | -0.45           | -0.45        | 0.17        | 6.32         | 6.19         | 5.07        | 4.08        | 3.55       | 4.65         |                   |
| Difference                                       |                    |              | 0.13            | 0.13         | 0.24        | 1.06         | 0.90         | 0.36        | N/A         | N/A        | 0.40         |                   |
| <b>PGIM Core Plus Fixed Income (CF)</b>          | <b>206,550,403</b> | <b>6.30</b>  | <b>-0.69</b>    | <b>-0.69</b> | <b>1.39</b> | <b>5.78</b>  | <b>6.04</b>  | <b>N/A</b>  | <b>N/A</b>  | <b>N/A</b> | <b>7.62</b>  | <b>06/01/2018</b> |
| Bloomberg US Agg Bond Index                      |                    |              | -0.45           | -0.45        | 0.17        | 6.32         | 6.19         | 5.07        | 4.08        | 3.55       | 6.84         |                   |
| Difference                                       |                    |              | -0.24           | -0.24        | 1.22        | -0.54        | -0.15        | N/A         | N/A         | N/A        | 0.78         |                   |
| <b>Non-Core Fixed Income Composite</b>           | <b>342,773,211</b> | <b>10.46</b> | <b>0.03</b>     | <b>0.03</b>  | <b>3.31</b> | <b>-1.88</b> | <b>0.73</b>  | <b>1.69</b> | <b>N/A</b>  | <b>N/A</b> | <b>2.00</b>  | <b>07/01/2017</b> |
| Custom Non-Core Fixed Income Benchmark           |                    |              | 0.29            | 0.29         | 3.70        | -0.88        | 1.24         | 3.27        | 5.12        | 4.53       | 3.54         |                   |
| Difference                                       |                    |              | -0.26           | -0.26        | -0.39       | -1.00        | -0.51        | -1.58       | N/A         | N/A        | -1.54        |                   |
| <b>Wellington Blended Opportunistic EMD (CF)</b> | <b>109,600,524</b> | <b>3.34</b>  | <b>0.21</b>     | <b>0.21</b>  | <b>1.99</b> | <b>N/A</b>   | <b>N/A</b>   | <b>N/A</b>  | <b>N/A</b>  | <b>N/A</b> | <b>-0.53</b> | <b>03/01/2020</b> |
| Wellington Blended Benchmark                     |                    |              | 0.20            | 0.20         | 1.66        | -3.22        | -1.39        | 2.38        | 4.82        | 2.88       | -1.17        |                   |
| Difference                                       |                    |              | 0.01            | 0.01         | 0.33        | N/A          | N/A          | N/A         | N/A         | N/A        | 0.64         |                   |
| <b>Hotchkis &amp; Wiley High Yield (SA)</b>      | <b>73,119,015</b>  | <b>2.23</b>  | <b>-0.13</b>    | <b>-0.13</b> | <b>4.65</b> | <b>-2.49</b> | <b>-0.08</b> | <b>1.43</b> | <b>4.51</b> | <b>N/A</b> | <b>3.28</b>  | <b>12/01/2013</b> |
| Bloomberg US Corp Hi Yld Index                   |                    |              | 0.51            | 0.51         | 5.13        | 1.13         | 3.49         | 4.24        | 6.32        | 6.25       | 5.01         |                   |
| Difference                                       |                    |              | -0.64           | -0.64        | -0.48       | -3.62        | -3.57        | -2.81       | -1.81       | N/A        | -1.73        |                   |
| <b>Beach Point Leveraged Loan (CF)</b>           | <b>94,121,407</b>  | <b>2.87</b>  | <b>-0.03</b>    | <b>-0.03</b> | <b>3.42</b> | <b>-1.40</b> | <b>0.65</b>  | <b>2.39</b> | <b>2.88</b> | <b>N/A</b> | <b>3.60</b>  | <b>10/01/2012</b> |
| CS Lvg'd Loan Index                              |                    |              | 0.17            | 0.17         | 4.31        | -0.66        | 1.50         | 2.99        | 4.10        | 4.31       | 3.91         |                   |
| Difference                                       |                    |              | -0.20           | -0.20        | -0.89       | -0.74        | -0.85        | -0.60       | -1.22       | N/A        | -0.31        |                   |
| <b>AG Direct Lending Fund III, LP</b>            | <b>22,732,706</b>  | <b>0.69</b>  |                 |              |             |              |              |             |             |            |              | <b>11/01/2018</b> |
| <b>THL Direct Lending Fund IV, LLC</b>           | <b>14,637,322</b>  | <b>0.45</b>  |                 |              |             |              |              |             |             |            |              | <b>06/01/2019</b> |
| <b>PIMCO Private Income Fund, LLC</b>            | <b>20,871,489</b>  | <b>0.64</b>  |                 |              |             |              |              |             |             |            |              | <b>11/01/2019</b> |
| <b>Deerpath Capital V, LP</b>                    | <b>7,690,707</b>   | <b>0.23</b>  |                 |              |             |              |              |             |             |            |              | <b>11/01/2020</b> |

Performance shown is net of fees and provided by BNY Mellon or the manager. Performance shown is preliminary and subject to change. Performance is annualized for periods greater than one year. Total Fund performance excludes Treasury Cash. Indices show N/A for since inception returns when the fund contains more history than the corresponding benchmark. The fiscal year ends 06/30.

**Santa Barbara County Employees' Retirement System**  
**Asset Allocation & Performance**

**As of October 31, 2020**

|  | Allocation         |              | Performance (%) |              |             |               |               |              |             |            |              |                   |
|--|--------------------|--------------|-----------------|--------------|-------------|---------------|---------------|--------------|-------------|------------|--------------|-------------------|
|  | Market Value (\$)  | %            | MTD             | QTD          | FYTD        | CYTD          | 1 Year        | 3 Years      | 5 Years     | 10 Years   | Since Incep. | Inception Date    |
| <b>Real Return Composite</b>                     | <b>466,680,799</b> | <b>14.24</b> | <b>0.04</b>     | <b>0.04</b>  | <b>5.39</b> | <b>-6.24</b>  | <b>-4.50</b>  | <b>1.91</b>  | <b>N/A</b>  | <b>N/A</b> | <b>2.34</b>  | <b>07/01/2017</b> |
| Consumer Price Index+4%                          |                    |              | 0.37            | 0.37         | 2.33        | 4.69          | 5.23          | 5.89         | 5.90        | 5.83       | 5.92         |                   |
| Difference                                       |                    |              | -0.33           | -0.33        | 3.06        | -10.93        | -9.73         | -3.98        | N/A         | N/A        | -3.58        |                   |
| Custom Real Return Benchmark                     |                    |              | -0.43           | -0.43        | 2.39        | -3.31         | -2.13         | 2.43         | N/A         | N/A        | 3.62         |                   |
| Difference                                       |                    |              | 0.47            | 0.47         | 3.00        | -2.93         | -2.37         | -0.52        | N/A         | N/A        | -1.28        |                   |
| <b>Public Real Return Composite</b>              | <b>280,433,058</b> | <b>8.56</b>  | <b>-0.73</b>    | <b>-0.73</b> | <b>3.43</b> | <b>-6.92</b>  | <b>-5.36</b>  | <b>1.72</b>  | <b>N/A</b>  | <b>N/A</b> | <b>2.25</b>  | <b>07/01/2017</b> |
| <b>BNY Mellon TIPS - NL (CF)</b>                 | <b>71,446,125</b>  | <b>2.18</b>  | <b>-0.65</b>    | <b>-0.65</b> | <b>2.36</b> | <b>8.61</b>   | <b>9.19</b>   | <b>5.51</b>  | <b>4.44</b> | <b>N/A</b> | <b>8.96</b>  | <b>05/01/2019</b> |
| Bloomberg US Trsy US TIPS Index                  |                    |              | -0.65           | -0.65        | 2.37        | 8.52          | 9.09          | 5.49         | 4.42        | 3.24       | 8.90         |                   |
| Difference                                       |                    |              | 0.00            | 0.00         | -0.01       | 0.09          | 0.10          | 0.02         | 0.02        | N/A        | 0.06         |                   |
| <b>Cohen &amp; Steers Real Assets Fund (CIT)</b> | <b>104,637,110</b> | <b>3.19</b>  | <b>-0.94</b>    | <b>-0.94</b> | <b>3.53</b> | <b>-11.25</b> | <b>-9.04</b>  | <b>-0.37</b> | <b>N/A</b>  | <b>N/A</b> | <b>-0.17</b> | <b>09/01/2017</b> |
| Cohen & Steers Real Assets Custom Index          |                    |              | -1.26           | -1.26        | 2.18        | -12.91        | -11.01        | -1.18        | 1.52        | N/A        | -0.90        |                   |
| Difference                                       |                    |              | 0.32            | 0.32         | 1.35        | 1.66          | 1.97          | 0.81         | N/A         | N/A        | 0.73         |                   |
| <b>Nuveen Real Asset Income Fund (SA)</b>        | <b>104,347,548</b> | <b>3.18</b>  | <b>-0.58</b>    | <b>-0.58</b> | <b>4.08</b> | <b>-11.85</b> | <b>-10.44</b> | <b>1.37</b>  | <b>N/A</b>  | <b>N/A</b> | <b>1.20</b>  | <b>09/01/2017</b> |
| Nuveen Real Asset Income Blend Index             |                    |              | -1.02           | -1.02        | 2.62        | -9.44         | -8.12         | 1.00         | 3.83        | N/A        | 0.99         |                   |
| Difference                                       |                    |              | 0.44            | 0.44         | 1.46        | -2.41         | -2.32         | 0.37         | N/A         | N/A        | 0.21         |                   |
| <b>Private Real Return Composite</b>             | <b>186,247,741</b> | <b>5.68</b>  | <b>1.22</b>     | <b>1.22</b>  | <b>8.52</b> | <b>-2.53</b>  | <b>-0.32</b>  | <b>3.96</b>  | <b>N/A</b>  | <b>N/A</b> | <b>3.55</b>  | <b>07/01/2017</b> |
| <b>Private Natural Resources</b>                 | <b>41,764,723</b>  | <b>1.27</b>  | <b>3.16</b>     | <b>3.16</b>  | <b>7.99</b> | <b>-2.62</b>  | <b>-2.67</b>  | <b>1.86</b>  | <b>4.06</b> | <b>N/A</b> | <b>3.51</b>  | <b>10/01/2013</b> |
| Consumer Price Index+4% (1 Qtr Lag)              |                    |              | 0.83            | 0.83         | 1.70        | 4.26          | 5.03          | 5.99         | 5.72        | 5.81       | 5.54         |                   |
| Difference                                       |                    |              | 2.33            | 2.33         | 6.29        | -6.88         | -7.70         | -4.13        | -1.66       | N/A        | -2.03        |                   |
| <b>Private Infrastructure</b>                    | <b>144,483,017</b> | <b>4.41</b>  | <b>0.69</b>     | <b>0.69</b>  | <b>8.69</b> | <b>-2.45</b>  | <b>0.32</b>   | <b>4.59</b>  | <b>5.19</b> | <b>N/A</b> | <b>-9.14</b> | <b>01/01/2014</b> |
| Consumer Price Index+4%                          |                    |              | 0.37            | 0.37         | 2.33        | 4.69          | 5.23          | 5.89         | 5.90        | 5.83       | 5.70         |                   |
| Difference                                       |                    |              | 0.32            | 0.32         | 6.36        | -7.14         | -4.91         | -1.30        | -0.71       | N/A        | -14.84       |                   |

Performance shown is net of fees and provided by BNY Mellon or the manager. Performance shown is preliminary and subject to change. Performance is annualized for periods greater than one year. Total Fund performance excludes Treasury Cash. Indices show N/A for since inception returns when the fund contains more history than the corresponding benchmark. The fiscal year ends 06/30.

**Santa Barbara County Employees' Retirement System**  
**Asset Allocation & Performance**

**As of October 31, 2020**

|   | Allocation         |              | Performance (%) |             |              |             |             |              |              |              |              |                   |
|---|--------------------|--------------|-----------------|-------------|--------------|-------------|-------------|--------------|--------------|--------------|--------------|-------------------|
|   | Market Value (\$)  | %            | MTD             | QTD         | FYTD         | CYTD        | 1 Year      | 3 Years      | 5 Years      | 10 Years     | Since Incep. | Inception Date    |
| <b>Real Estate Composite</b>              | <b>307,958,508</b> | <b>9.40</b>  | <b>0.08</b>     | <b>0.08</b> | <b>-0.21</b> | <b>0.58</b> | <b>2.34</b> | <b>7.61</b>  | <b>8.79</b>  | <b>10.09</b> | <b>5.95</b>  | <b>04/01/2006</b> |
| NCREIF ODCE Index (AWA) (Net) (1 Qtr Lag) |                    |              | 0.00            | 0.00        | -1.75        | 0.25        | 1.33        | 4.72         | 6.35         | 9.78         | 5.52         |                   |
| Difference                                |                    |              | 0.08            | 0.08        | 1.54         | 0.33        | 1.01        | 2.89         | 2.44         | 0.31         | 0.43         |                   |
| <b>ORG Real Estate</b>                    | <b>307,952,965</b> | <b>9.40</b>  | <b>0.08</b>     | <b>0.08</b> | <b>-0.21</b> | <b>0.58</b> | <b>2.34</b> | <b>7.58</b>  | <b>8.75</b>  | <b>10.08</b> | <b>5.94</b>  | <b>04/01/2006</b> |
| NCREIF ODCE Index (AWA) (Net) (1 Qtr Lag) |                    |              | 0.00            | 0.00        | -1.75        | 0.25        | 1.33        | 4.72         | 6.35         | 9.78         | 5.52         |                   |
| Difference                                |                    |              | 0.08            | 0.08        | 1.54         | 0.33        | 1.01        | 2.86         | 2.40         | 0.30         | 0.42         |                   |
| <b>Private Equity Composite</b>           | <b>347,451,088</b> | <b>10.60</b> | <b>1.52</b>     | <b>1.52</b> | <b>14.07</b> | <b>6.28</b> | <b>7.09</b> | <b>12.02</b> | <b>12.11</b> | <b>13.37</b> | <b>9.31</b>  | <b>06/01/2006</b> |
| Russell 3000+3% Index (1 Qtr Lag)         |                    |              | 0.00            | 0.00        | 22.93        | 7.67        | 7.85        | 12.55        | 12.90        | 16.32        | 11.67        |                   |
| Difference                                |                    |              | 1.52            | 1.52        | -8.86        | -1.39       | -0.76       | -0.53        | -0.79        | -2.95        | -2.36        |                   |

Performance for the NCREIF ODCE Index (AWA) (Net) (1 Qtr Lag) is available quarterly; interim months assume a 0.00% return.

Performance for the Russell 3000+3% Index (1 Qtr Lag) is calculated quarterly; interim months assume a 0.00% return.

Performance shown is net of fees and provided by BNY Mellon or the manager. Performance shown is preliminary and subject to change. Performance is annualized for periods greater than one year. Total Fund performance excludes Treasury Cash. Indices show N/A for since inception returns when the fund contains more history than the corresponding benchmark. The fiscal year ends 06/30.



**Santa Barbara County Employees' Retirement System**  
**Alternative Investment Private Credit Fund Performance Listing**

**As of September 30, 2020**

| <b>Fund Name</b>                             | <b>Vintage</b> | <b>Asset Class</b>              | <b>Commitment (\$)</b> | <b>Paid In Capital (\$)</b> | <b>Distributions (\$)</b> | <b>Valuation (\$)</b> | <b>Fund IRR (%)</b> | <b>Index IRR (%)</b> | <b>Fund Multiple</b> |
|--|----------------|---------------------------------|------------------------|-----------------------------|---------------------------|-----------------------|---------------------|----------------------|----------------------|
| AG Direct Lending Fund III, LP               | 2018           | Private Credit - Direct Lending | 25,000,000             | 23,035,117                  | 1,594,056                 | 23,620,397            | 7.35                | 3.78                 | 1.09                 |
| THL Credit Direct Lending Fund IV            | 2018           | Private Credit - Direct Lending | 20,000,000             | 17,227,267                  | 2,840,520                 | 15,302,360            | 6.71                | 3.86                 | 1.05                 |
| Deerpath Capital V, LP                       | 2019           | Private Credit - Direct Lending | 20,000,000             | 0                           | 0                         | 0                     | N/M                 | N/M                  |                      |
| PIMCO Private Income Fund Onshore Feeder LLC | 2019           | Private Credit - Direct Lending | 20,000,000             | 20,000,000                  | 0                         | 21,928,614            | N/M                 | N/M                  | 1.10                 |
|  |                |                                 | <b>85,000,000</b>      | <b>60,262,384</b>           | <b>4,434,576</b>          | <b>60,851,371</b>     | <b>9.32</b>         | <b>5.27</b>          | <b>1.08</b>          |

Certain valuations (marked with a "\*\*") are preliminary estimates of valuation as of the date of reporting and reflect the estimated impact of subsequent net cash contributions/distributions. These figures may be used in calculations contained in this report. Index IRR represents the dollar-weighted returns calculated using the CS Lvg'd Loan Index assuming an index investment with the same cash flow timing. IRRs are shown only for investments with one year or more of cash flows and for which an accurate IRR could be calculated. Applicable IRRs are marked with 'N/M' for not material. Fund IRR is the annualized since-inception net internal rate for the indicated fund or composite. Fund Multiple is the since inception sum of distributions and valuation divided by paid in capital.



**Performance Related Comments**

- RVK, Inc. began monitoring the assets of the Santa Barbara County Employees' Retirement System in 06/2016. Prior historical data was provided by the previous investment consultant.
- Inception dates shown represent the first full month following initial funding.
- Performance is annualized for periods greater than one year.
- Total Fund performance excludes Treasury Cash.
- Performance shown is net of fees and provided by BNY Mellon or the manager.
- Market values and performance shown are preliminary and subject to change.
- Historical performance prior to 04/11/2019 for BNY Mellon HEDI (SA), BNY Mellon R1000 Index - NL (CF), and BNY Mellon TIPS - NL (CF) is represented by RhumbLine HEDI (SA), SSgA Russell 1000 Index - NL (CF), and BlackRock TIPS (CF), respectively.

**Custom Index Comments**

- RVK began calculating the SBCERS Policy Benchmark on 04/01/2016. Historical performance was provided by the previous consultant. The passive **Policy Benchmark** currently consists of 19% Russell 3000 Index, 11% MSCI EAFE Index (USD) (Net), 7% MSCI Emg Mkts Index (USD) (Net), 17% Bloomberg US Agg Bond Index, 11% Custom Non-Core Fixed Income Benchmark, 15% Consumer Price Index+4%, 10% NCREIF ODCE Index (AWA) (Net) (1 Qtr Lag), and 10% Russell 3000 Index+3% (1 Qtr Lag).
- The active **SBCERS Dynamic Policy Benchmark** is calculated monthly using beginning of month manager weights applied to each corresponding primary benchmark return.
- The passive **Custom Non-Core Fixed Income Benchmark** currently consists of 33.3% Bloomberg US Corp Hi Yld Index, 33.3% Wellington Blended Benchmark, and 33.3% CS Lvg'd Loan Index.
- The passive **Wellington Blended Benchmark** currently consists of 50% JPM GBI-EM Gbl Dvf'd Index (USD) (TR) (Unhedged) and 50% JPM Emg Mkts Bond Gbl Dvf'd Index (TR).
- The active **Custom Real Return Benchmark** is calculated monthly using beginning of month manager weights within the Real Return Composite applied to each corresponding primary benchmark return.
- The passive **Cohen & Steers Real Assets Custom Index** is a custom benchmark created by the manager and currently consists of 27.5% FTSE EPRA/NAREIT Dvld Index (USD) (Net), 27.5% Bloomberg Cmdty Index (TR), 15% S&P Gbl Natural Res Sect Index (TR), 15% DJ Brookfield Gbl Infrastructure Index, 10% ICE BofAML 1-3 Yr US Corp Index, and 5% Gold Spot Per Ounce Index. Prior to 9/30/2013 benchmark consisted of 30% FTSE EPRA/NAREIT Dvld Index (USD) (Net), 30% Bloomberg Cmdty Index (TR), 20% S&P Gbl Natural Res Sect Index (TR), 12.5% ICE BofAML 1-3 Yr Corp Index, and 7.5% Gold Spot Per Ounce Index.
- The passive **Nuveen Real Asset Income Blend Index** is a custom benchmark created by the manager and currently consists of 28% S&P Gbl Infrastructure Index, 21% FTSE EPRA/NAREIT Dvl'd Index (USD) (Net), 18% Wells Fargo Hybrid & Preferred Securities REIT Index, 15% Bloomberg Global Capital Securities Index and 18% Bloomberg US Corp Hi Yld Index.
- Performance for the NCREIF ODCE Index (AWA) (Net) (1 Qtr Lag) is available quarterly; interim months assume a 0.00% return.

**Santa Barbara County Employees' Retirement System  
Fee Schedule for Public Investment Managers**

**As of October 31, 2020**

|   | <b>Fee Schedule</b>  | <b>Market Value<br/>As of<br/>10/31/2020<br/>(\$)</b> | <b>Estimated<br/>Annual Fee<br/>(\$)</b> | <b>Estimated<br/>Annual Fee<br/>(%)</b> |
|---|--|---|--|---|
| <b>Total Fund Public Assets</b>             |  | <b>2,367,644,478</b>                                  | <b>7,875,943</b>                         | <b>0.33</b>                             |
| <b>U.S. Equity Composite</b>                |  |   |  |   |
| BNY Mellon HEDI (SA)                        | 0.02 % of Assets   | 269,101,762   | 53,820                                   | 0.02                                    |
| BNY Mellon R1000 Index - NL (CF)            | 0.01 % of Assets   | 323,185,289   | 32,319                                   | 0.01                                    |
| Dimensional U.S. Small Cap Value (CF)       | 0.50 % of Assets   | 25,330,085  | 126,650                                  | 0.50                                    |
| RHJ Small Cap Opportunities (SA)            | 0.85 % of Assets   | 30,819,787  | 261,968                                  | 0.85                                    |
| <b>Dev'd Mkt. Non-U.S. Equity Composite</b> |  |   |  |   |
| First Eagle International Value Equity (SA) | 0.75 % of Assets   | 94,313,780  | 707,353                                  | 0.75                                    |
| PanAgora Dynamic International Equity (SA)  | 0.33 % of First \$100 M<br>0.30 % of Next \$100 M<br>0.25 % Thereafter | 90,836,964  | 299,762                                  | 0.33                                    |
| Artisan Non-U.S. Growth (SA)                | 0.80 % of First \$50 M<br>0.60 % Thereafter                            | 108,692,235   | 752,153                                  | 0.69                                    |
| Copper Rock International Small Cap (CF)    | 0.64 % of Assets   | 46,988,037  | 299,549                                  | 0.64                                    |
| <b>Emerging Mkt. Equity Composite</b>       |  |   |  |   |
| DFA Emg Mkts Value;I (DFEVX)                | 0.51 % of Assets   | 105,707,449   | 539,108                                  | 0.51                                    |
| RBC Emerging Markets Equity (CF)            | 0.50 % of Assets   | 141,125,024   | 705,625                                  | 0.50                                    |
| <b>Core Fixed Income Composite</b>          |  |   |  |   |
| BNY Mellon US Aggregate Bond - NL (CF)      | 0.01 % of Assets   | 53,270,627  | 5,327                                    | 0.01                                    |
| Garcia Hamilton Core Fixed Income (SA)      | 0.30 % of First \$10 M<br>0.25 % Thereafter                            | 267,537,997   | 673,845                                  | 0.25                                    |
| PGIM Core Plus Fixed Income (CF)            | 0.26 % of Assets   | 206,550,403   | 537,031                                  | 0.26                                    |

**Santa Barbara County Employees' Retirement System  
Fee Schedule for Public Investment Managers**

**As of October 31, 2020**

|   | <b>Fee Schedule</b>  | <b>Market Value<br/>As of<br/>10/31/2020<br/>(\$)</b> | <b>Estimated<br/>Annual Fee<br/>(\$)</b> | <b>Estimated<br/>Annual Fee<br/>(%)</b> |
|---|--|---|--|---|
| <b>Non-Core Fixed Income Composite</b>    |  |   |  |   |
| Wellington Blended Opportunistic EMD (CF) | 0.55 % of Assets   | 109,600,524   | 602,803                                  | 0.55                                    |
| Hotchkis & Wiley High Yield (SA)          | 0.45 % of First \$50 M<br>0.40 % Thereafter                          | 73,119,015  | 317,476                                  | 0.43                                    |
| Beach Point Leveraged Loan (CF)           | 0.50 % of Assets   | 94,121,407  | 470,607                                  | 0.50                                    |
| <b>Public Real Return Composite</b>       |  |   |  |   |
| BNY Mellon TIPS - NL (CF)                 | 0.01 % of Assets   | 71,446,125  | 7,145                                    | 0.01                                    |
| Cohen & Steers Real Assets Fund (CIT)     | 0.65 % of Assets   | 104,637,110   | 680,141                                  | 0.65                                    |
| Nuveen Real Asset Income Fund (SA)        | 0.80 % of First \$50 M<br>0.75 % of Next \$50 M<br>0.65 % Thereafter | 104,347,548   | 803,259                                  | 0.77                                    |

- The Investment Manager Fee for Copper Rock International Small Cap (CF) is 0.6375% of assets.
- Mutual Fund fees are sourced from Morningstar and/or the investment manager.

| Overview of RVK Performance Reports                           |  |   |
|---|--|---|
|   | Monthly Investment Performance Analysis                          | Quarterly Investment Performance Analysis                     |
| Frequency   | Typically available by the 15th business day following month end | Typically available 30-45 calendar days following quarter end |
| <b>Analytics Included</b>                                     |  |   |
| Capital Markets Review (abbreviated)                          | ✓  |   |
| Capital Markets Review (with full asset class detail)         |  | ✓   |
| Monthly Portfolio Highlights or Executive Summary             | ✓  | ✓   |
| Manager Monitoring/Investment Manager Updates/Watch List      |  | ✓   |
| Asset Allocation By Manager and Schedule of Investable Assets | ✓  | ✓   |
| Asset Allocation vs. Target Allocation                        | ✓  | ✓   |
| Plan Asset Overview   | ✓  | ✓   |
| Total Fund Asset Allocation & Ranks vs. Peers                 |  | ✓   |
| Trailing Performance  | ✓  |   |
| Trailing & Fiscal Year Performance (including ranks)          |  | ✓   |
| Total Fund IDP Attribution                                    |  | ✓   |
| Composite Profile Pages (including ranks)                     |  | ✓   |
| Private Credit AltInvest Report                               | ✓  | ✓   |
| Investment Manager Profile Pages (including ranks)            |  | ✓   |
| Fee Schedule for Public Investment Managers                   | ✓  | ✓   |
| Underlying Indices of SBCERS Policy Index                     |  | ✓   |
| Work Plan   |  | ✓   |



## Glossary

**Active Return** - The difference between the investment manager/composite performance relative to the performance of an appropriate market benchmark.

**Active Share** - Measures the degree to which the holdings of a fund differ from the holdings of the benchmark. Active share is calculated by taking the sum of the absolute value of the differences of the weight of each holding in the fund versus the weight of each holding in the benchmark and dividing by two.

**Alpha** - A measure of the difference between a portfolio's actual returns and its expected performance, given its level of risk as measured by beta. It is a measure of the portfolio's historical performance not explained by movements of the market or a portfolio's non-systematic return.

**Alpha Ratio** - A measure of a portfolio's non-systematic return per unit of downside risk. It is measured by dividing the alpha of a portfolio by the downside risk. The non-systematic return is a measure of a portfolio's historical performance not explained by movements of the market.

**Average Quality** - Bond quality ratings are reported using the investment managers' and the index providers' preferred rating agency. *Average Quality for managers unable to provide this statistic is instead provided by Morningstar; if unavailable on Morningstar, it has been estimated using a credit quality distribution provided by the manager.* There are two primary rating agencies in the US. *Moody's* assigns ratings on a system that employs up to four symbols (consisting of letters and numbers) such as, Aaa, Aa2, etc., with Aaa being the highest or safest rating. *Standard & Poor's (S&P)* employs a system that uses + and - along with letters such as AAA, AA+, etc. The two rating agencies' systems are summarized below:

| <u>S&amp;P</u>                                  | <u>Moody's</u> | <u>Explanation</u>           | <u>S&amp;P</u>                                       | <u>Moody's</u> | <u>Explanation</u>              |
|---|----------------|------------------------------|--|----------------|---------------------------------|
| <b>Higher Credit Quality – Investment Grade</b> |                |                              | <b>Lower Credit Quality – Below Investment Grade</b> |                |                                 |
| AAA   | Aaa            | Prime/Highest credit quality | BB+  | Ba1            | Speculative/Low credit quality  |
| AA+   | Aa1            | High credit quality          | BB   | Ba2            |                                 |
| AA  | Aa2            |                              | BB-  | Ba3            |                                 |
| AA-   | Aa3            |                              | B+   | B1             | Highly speculative              |
| A+  | A1             | Upper-medium credit quality  | B  | B2             |                                 |
| A   | A2             |                              | B-   | B3             |                                 |
| A-  | A3             |                              | CCC+   | Caa1           | Substantial credit/default risk |
| BBB+  | Baa1           | Lower-medium credit quality  | CCC  | Caa2           | Extremely speculative           |
| BBB   | Baa2           |                              | CCC-   | Caa3           |                                 |
| BBB-  | Baa3           |                              | CC   | Ca             | Vulnerable to default           |
|   |                |                              | C  | Ca             |                                 |
|   |                |                              | D  | C              | In default                      |

**Benchmark Effect** - The difference between the blended return of each respective managers' benchmark within a composite and the composite's benchmark return.

**Beta** - A measure of the sensitivity of a portfolio to the movements in the market. It is a measure of a portfolio's non-diversifiable or systematic risk.

**Box Plots** - A graphical representation of the distribution of observations. From top to bottom, the four boxes represent the spread between the maximum value and the minimum value in each quartile. A quartile represents the values that divide the observations into four quarters (i.e., 1<sup>st</sup> quartile, 2<sup>nd</sup> quartile, 3<sup>rd</sup> quartile, and 4<sup>th</sup> quartile). The median observation is where the 2<sup>nd</sup> quartile and 3<sup>rd</sup> quartile meet.

**Buy and Hold Attribution** - At the beginning of the time period under analysis, the manager and benchmark portfolios are broken down into segments (i.e., styles, sectors, countries, and regions) based on the desired type of attribution. The formula assumes zero turn-over to the manager and benchmark portfolios throughout the period and calculates the segment returns ("buy and hold returns") to arrive at performance attribution. Due to portfolio turnover, buy and hold attribution may not accurately represent quarterly performance relative to the benchmark. Country, region, sector, and style allocations are as of the date one quarter prior to the reporting date, and the returns shown are for those segments throughout the quarter reported. Due to disclosure guidelines set by each investment manager, equity characteristics shown are as of the most recent date available. The following is the methodology for segment classification:

**Sector** - Attribution is calculated using the Global Industry Classification Standard (GICS) which is a detailed and comprehensive structure for sector and industry analysis. Stocks are classified by their primary sector, as defined by S&P Capital IQ data.

**Country/Region** - Attribution is calculated using the Morgan Stanley Capital International (MSCI) region standards. Stocks are classified by their domicile country/region, as defined by S&P Capital IQ data.

**Style** - Stocks are classified into the following style boxes: large/mid/small vs. growth/neutral/value. Stocks are classified along large/mid/small categories at the time of the Russell index rebalancing, using the index market cap boundaries as cutoff points. Stocks are classified along growth/neutral/value categories at the time of the Russell index rebalancing, using the price/book ratio as supplied by S&P Capital IQ. Stocks in the Russell 3000 Index portfolio are sorted by price/book ratio; names with the highest price/book ratio that make up 1/3 of the total market capitalization are assigned to the growth category, names that make up the subsequent 1/3 of the total market capitalization are assigned to the neutral category, while the balance of the names are assigned to the value category.

Portfolio Characteristics and Buy and Hold Attribution reports utilize product-specific data for all mutual funds and commingled funds.

### Capital Markets Review -

**Breakeven Inflation** - Measures the expected inflation rate at each stated maturity by taking the difference between the real yield of the inflation-linked maturity curve and the yield of the closest nominal Treasury maturity.

**Consumer Confidence** - Measures domestic consumer confidence as defined by the degree of optimism on the state of the economy that consumers express through saving and spending.

**Consumer Price Index (CPI)** - Measures the change in the price level of consumer goods and services.

**Federal Funds Rate** - The interest rate at which a depository institution lends funds maintained at the Federal Reserve to another depository institution overnight. It is one of the most influential interest rates in the US economy, since it affects monetary and financial conditions, which in turn have a bearing on key aspects of the broad economy including employment, growth and inflation.

**Option-Adjusted Spread** - Measures the flat spread of an index or bond to the Treasury yield curve after removing the effect of any embedded options.



## Glossary

- Purchasing Managers Index (PMI)** - Measures economic activity by surveying purchasing managers on a monthly basis as to whether business conditions have improved, worsened, or stayed the same.
- Real Gross Domestic Product (Real GDP)** - An inflation-adjusted measure that reflects the value of all goods and services produced by an economy in a given year.
- US Dollar Total Weighted Index** - Measures the value of the US Dollar relative to a basket of other world currencies. It is calculated as the weighted geometric mean of the dollar's value versus the EUR, GBP, CAD, SEK, CHF, and JPY.
- Unemployment Rate** - The percentage of the total labor force that is unemployed but actively seeking employment.
- VIX** - Measures the implied volatility of S&P 500 Index options by looking at the market's expectation of the S&P 500 Index volatility over the next 30 day period. Commonly referred to as the "fear index" or the "fear gauge."
- Cash Flow Effect** - The composite's active return minus the sum of each managers' active return minus the benchmark effect.
- Consistency** - The percentage of quarters that a product achieved a rate of return higher than that of its benchmark. The higher the consistency figure, the more value a manager has contributed to the product's performance.
- Convexity** - A measure of the shape of the curve that describes the relationship between bond prices and bond yields.
- Correlation** - A statistical measure of the relationship between asset class returns. A value of 1.00 is a perfect correlation; that is, the asset classes always move in the same direction. A value of -1.00 indicates a perfect negative correlation, in which the asset classes always move in opposite directions of each other. A value of 0 indicates there is no relationship between the direction of returns of the two asset classes. Correlation calculations only consider the direction of changes relative to two variables and not the magnitude of those changes.
- Coupon Rate** - The percentage rate of interest paid on a bond or fixed income security; it is typically paid twice per year.
- Current Yield** - The annual income of a security divided by the security's current price.
- Down Market Capture** - Down market by definition is negative benchmark return and down market capture represents the ratio in % terms of the average portfolios return over the benchmark during the down market period. The lower the value of the down market capture the better the product's performance.
- Downside Risk** - A measure similar to standard deviation, but focuses only on the negative movements of the return series. It is calculated by taking the standard deviation of the negative monthly returns. The higher the factor, the riskier the product.
- Earnings Per Share** - It is backward looking, calculated using the one year current EPS divided by the one year EPS five years ago.
- Effective Duration** - The approximate percentage change in a bond's price for a 100 basis point change in yield.
- Excess Return vs. Market** - Average of the monthly arithmetic difference between the manager's return and the benchmark return over a specified time period, shown on an annualized basis.
- Excess Return vs. Risk Free** - Average of the monthly arithmetic difference between the manager's return and the risk-free return (i.e., ICE BofAML 3 Mo US T-Bill Index unless specified otherwise) over a specified time period, shown on an annualized basis.
- Excess Risk** - A measure of the standard deviation of a portfolio's performance relative to the risk free return.
- Expense Ratios** - Morningstar is the source for mutual fund expense ratios.
- Gain/Loss** - The net increase or decrease in the market value of a portfolio excluding its Net Cash Flow for a given period.
- Indices** - All indices and related information are considered intellectual property and are licensed by each index provider. The indices may not be copied, used or distributed without the index provider's prior written approval. Index providers make no warranties and bear no liability with respect to the indices, any related data, their quality, accuracy, suitability and/or completeness.
- Information Ratio** - Measured by dividing the active rate of return by the tracking error. The higher the information ratio, the more value-added contribution by the manager.
- Liability Driven Investing (LDI)** - A method to optimally structure asset investments relative to liabilities. The change in liabilities is estimated by the Ryan Labs Generic PPA Index of appropriate duration for that Plan. This benchmark is based on generic data and is therefore an approximation. RVK is not an actuarial firm, and does not have actuarial expertise.
- Estimated Funded Status** - The estimated ratio of a Plan's assets relative to its future liabilities. This is calculated by dividing the Plan's asset market value by the estimated present value of its liabilities. The higher the estimated funded status, the better the Plan's ability to cover its projected benefit obligations. An estimated funded status of 100% indicates a Plan that is fully funded.
- Estimated PV of Liabilities** - An estimate of a Plan's future liabilities in present value terms. The beginning of the period liability is provided by the Plan's actuary. The period-end present value liability estimate provided in this report is derived by applying the estimated percentage change generated using the Ryan Labs Generic PPA Index with duration similar to that reported on the most recent actuarial valuation report.
- Duration of Liabilities** - The sensitivity of the value of a Plan's liabilities to changes in interest rates, as calculated by the Plan's actuary.
- Duration of Assets** - The dollar-weighted average duration of all the individual Plan assets.
- Estimated Plan Hedge Ratio** - The estimate of how well a Plan's investment portfolio is hedged against changes in interest rates - a primary driver of funded status movements. This is calculated by dividing the dollar-weighted values of both the Plan asset duration by the liability duration and multiplying by the estimated funded status. An estimated plan hedge ratio of zero indicates that the Plan's liabilities have not been hedged, whereas a value of one indicates fully hedged.
- Modified Duration** - The approximate percentage change in a bond's price for a 100 basis point change in yield, assuming the bonds' expected cash flows do not change.

## Glossary

**Mutual Fund Performance** - Whenever possible, manager performance is extended for any share class that does not have 10 years of history. Using Morningstar's methodology, a single ticker within the same fund family (often the oldest share class) is chosen to append historical performance.

**Net Cash Flow** - The sum, in dollars, of a portfolio's contributions and withdrawals. This includes all management fees and expenses only when performance shown is gross of fees.

### Peer Groups -

**Plan Sponsor Peer Groups** - RVK utilizes the Mellon Analytical Solutions Trust Universe along with the Investment Metrics Plan Sponsor Universe. The combined Mellon Analytical Solutions Trust Universe and Investment Metrics Plan Sponsor Universe is used for comparison of total fund composite results and utilizes actual client returns compiled from consultant and custodial data. The Plan Sponsor Peer Group database includes performance and other quantitative data for over 2,100 plans which include corporate, endowment, foundation, public, and Taft Hartley plans. Plan Sponsor Peer Groups are gross of fees.

**Institutional Peer Groups (Separate Account and Commingled Fund)** - RVK utilizes the Investment Metrics Separate Account and Commingled Fund Manager Peer Groups for peer comparison and rankings. The Separate Account and Commingled Fund Peer Group database includes performance and other quantitative data for over 1,000 investment management firms, 6,400 investment products, across 100 standard peer groups. Separate Account and Commingled Fund Peer Groups are gross of fees.

**Mutual Fund (MF) Peer Groups** - RVK utilizes the Lipper Mutual Fund Manager Peer Groups for peer comparison and rankings. The Lipper Manager Peer Group database includes performance and other quantitative data for over 700 investment management firms and 24,500 investment products, across more than 140 standard peer groups. Mutual Fund Peer Groups are net of fees.

For more information on Peer Groups, visit <https://www.invmetrics.com/style-peer-groups>.

**Percentile Rankings** - Percentile rank compares an individual fund's performance with those of other funds within a defined peer group of managers possessing a similar investment style. Percentile rank identifies the percentage of a fund's peer group that has a higher return (or other comparative measurement) than the fund being ranked. Conversely, 100 minus the individual fund's ranking will identify the percentage of funds within the peer group that have a lower return than the fund being ranked.

1 - Highest Statistical Value

100 - Lowest Statistical Value

*Example: American Funds AMCP;R-4 (RAFEX) is ranked in the 4<sup>th</sup> percentile within the IM US Equity Large-Cap Growth Funds (MF) Peer Group for the Sharpe Ratio. Within the IM US Equity Large-Cap Growth Funds peer group, 4% of the other funds performed better than American Funds AMCP;R-4 (RAFEX), while 96% of the funds performed worse.*

**Performance Methodology** - RVK calculates performance for investment managers and composites using different methodologies.

**Investment Managers** - Performance is calculated for interim periods between all large external cash flows for a given month and geometrically linked to calculate period returns. An external cash flow is defined as cash, securities, or assets that enter or exit a portfolio. RVK defines a "large cash flow" as a net aggregate cash flow of  $\geq 10\%$  of the beginning-period portfolio market value or any cash flow that causes RVK calculated performance to deviate from manager/custodian reported performance in excess of 5 basis points for a given month.

**Composites** - The Modified Dietz methodology is utilized to calculate asset class, sub-asset class, and total fund composite performance. The Modified Dietz method calculates a time-weighted total rate of return that considers the timing of external cash flows; however, it does not utilize interim period performance to mitigate the impact of significant cash in- and outflows to the composite.

RVK calculates performance beginning with the first full month following inception. Since inception performance may vary from manager reported performance due to RVK using the first full month of returns as the inception date. Performance for both managers and composites is annualized for periods greater than one year.

**Portfolio Characteristics** - Due to disclosure guidelines set by each investment manager, portfolio characteristics shown are as of the most recent date available.

**Price to Earnings Ratio** - The ratio of a company's share price to its per-share earnings

**Private Equity Quartile Ranks** - Private Equity quartile ranks are generated using vintage year peer group data provided by Thomson Reuters, and are based on each fund's annualized, since inception internal rate of return (IRR). Three Private Equity peer groups are available via Thomson Reuters: Buyout, Venture, and All Private Equity. Ranks are available quarterly, at a one-quarter lag.

**Return** - Compounded rate of return for the period.

**% Return** - The time-weighted rate of return of a portfolio for a given period.

**R-Squared** - The percentage of a portfolio's performance explained by the behavior of the appropriate benchmark. High R-Squared means a higher correlation of the portfolio's performance to the appropriate benchmark.

**Risk Free Benchmark** - ICE BofAML 3 Mo US T-Bill Index unless specified otherwise.

## Glossary

**RVK Liquidity Rating** - A qualitative method for determining the relative amount of liquidity in a portfolio. The characteristics considered when determining relative liquidity include trading volume, gates for redemption, leverage, nature of transactions, and pricing mechanisms. The RVK Liquidity Rating is calculated using beginning of month investment weights applied to each corresponding asset class liquidity rating.

| <u>Asset Class</u>                  | <u>RVK Liquidity Rating</u> | <u>Asset Class</u>                   | <u>RVK Liquidity Rating</u> |
|-------------------------------------|-----------------------------|--------------------------------------|-----------------------------|
| <u>Liquid Investments</u>           |                             | <u>Less Liquid Investments</u>       |                             |
| T-Bills and Treasuries              | 100                         | Fixed Income Plus Sector             | 50                          |
| Cash Equivalents                    | 98                          | Bank Loans                           | 50                          |
| TIPS                                | 95                          | Stable Value (Plan Sponsor Directed) | 50                          |
| US Large Cap Equity                 | 95                          | Absolute Return Strategies           | 35                          |
| Diversified Real Return             | 93                          |                                      |                             |
| Stable Value (Participant Directed) | 91                          |                                      |                             |
| Non-US Large Cap Equity             | 90                          | <u>Not Liquid Investments</u>        |                             |
| Global Tactical Asset Allocation    | 88                          | Core Real Estate                     | 25                          |
| US Small Cap Equity                 | 85                          | Core Plus Real Estate                | 15                          |
| REITS                               | 85                          | Non-Core Real Estate                 | 5                           |
| Non-US Small Cap Equity             | 85                          | Private Equity Funds of Funds        | 5                           |
| Emerging Markets Equity             | 85                          |                                      |                             |
| Core Fixed Income                   | 85                          |                                      |                             |
| Core Plus Fixed Income              | 80                          |                                      |                             |

**Sector Allocation** - Negative fixed income sector allocation reflects manager's use of derivatives, short selling, or interest rate swaps.

**Sharpe Ratio** - Represents the excess rate of return over the risk-free return (i.e., ICE BofAML 3 Mo US T-Bill Index unless specified otherwise), divided by the standard deviation of the excess return to the risk free asset. The result is the absolute rate of return per unit of risk. The higher the value, the better the product's historical risk-adjusted performance.

**Simple Alpha** - The difference between the manager's return and the benchmark's return.

**Spread Duration** - The approximate percentage change in a bond's price for a 100 basis point change in its spread over a Treasury of the same maturity.

**Standard Deviation** - A statistical measure of the range of a portfolio's performance. The variability of a return around its average return over a specified time period.

**Time Period Abbreviations** - **QTD** - Quarter-to-Date. **CYTD** - Calendar Year-to-Date. **FYTD** - Fiscal Year-to-Date. **YOY** - Year Over Year.

**Thematic Classification** - Represents dedicated manager allocations; as such, thematic allocations are approximations. RVK categorizes the following asset classes as Alpha, Capital Appreciation, Capital Preservation, and Inflation:

| <u>Alpha</u>               | <u>Capital Appreciation</u>  | <u>Capital Preservation</u>          | <u>Inflation</u> |
|----------------------------|------------------------------|--------------------------------------|------------------|
| Absolute Return Strategies | Public Equity                | Core Fixed Income                    | TIPS             |
| Currency Overlay           | Private Equity               | CMBS Fixed Income                    | Bank Loans       |
|                            | Preferred Securities         | Asset Backed Fixed Income            | Core Real Estate |
|                            | High Yield                   | Domestic Core Plus Fixed Income      | Real Return      |
|                            | Convertible Fixed Income     | Mortgage Backed Fixed Income         | Inflation Hedges |
|                            | TALF Funds                   | International Developed Fixed Income | REITS            |
|                            | Distressed Debt              | Cash Equivalents                     | Commodities      |
|                            | Emerging Market Fixed Income | Stable Value                         |                  |
|                            | Value Added Real Estate      |                                      |                  |
|                            | Opportunistic Real Estate    |                                      |                  |

**Total Fund Attribution** - The Investment Decision Process (IDP) model provides an approach to evaluating investment performance that applies to all asset classes and investment styles. The IDP model is based on a top-down hierarchy framework of investment decisions, with each decision contributing to the overall profit or loss. The IDP approach starts from the strategic asset allocation and follows the flow of the investments down to the manager's skill.

**Strategic Asset Allocation (SAA)** - The percentage return gained or lost from the long-term strategic asset allocation decision, the most significant determinant of long-term performance. SAA is the product of the target asset allocation multiplied by the corresponding benchmark returns.

**Tactical Asset Allocation (TAA)** - The percentage return gained or lost from not having been precisely allocated at the target asset allocation mix, whether by deviations that are tactical in nature or a by-product of moving towards the target mix. TAA is the product of the actual asset allocation multiplied by the broad asset class benchmarks, less the SAA.

**Style Selection (SS)** - The percentage return gained or lost from intentional style biases within each asset class (e.g. value rather than core or overweight to emerging markets relative to benchmark). SS is the product of the actual manager allocation within each asset class multiplied by their specific benchmark, less TAA.

**Manager's Skill (MS)** - The percentage return gained or lost from manager value added relative to their specific benchmark. MS is the product of the actual manager allocation multiplied by their achieved excess return.

**Total Fund Beta** - Total Fund Beta is calculated using the S&P 500 as the benchmark. It represents a measure of the sensitivity of the total fund to movements in the S&P 500 and is a measure of the Total Fund's non-diversifiable or systematic risk.

**Tracking Error** - A measure of the standard deviation of a portfolio's performance relative to the performance of an appropriate market benchmark.

## Glossary

**Treynor Ratio** - Similar to Sharpe ratio, but focuses on beta rather than excess risk (standard deviation). Treynor ratio represents the excess rate of return over the risk-free rate (i.e., ICE BofAML 3 Mo US T-Bill Index unless specified otherwise) divided by the beta. The result is the absolute rate of return per unit of risk. The higher the value, the better historical risk-adjusted performance.

**Unit Value** - The dollar value of a portfolio, assuming an initial nominal investment of \$100, growing at the compounded rate of %Return for a given period.

**Up Market Capture** - Up market by definition is positive benchmark return and up market capture represents the ratio in % terms of the average portfolios return over the benchmark during the up market period. The higher the value of the up market capture the better the product's performance.

**Yield to Maturity** - The rate of return achieved on a bond or other fixed income security assuming the security is bought and held to maturity and that the coupon interest paid over the life of the bond will be reinvested at the same rate of return. The 30-Day SEC Yield is similar to the Yield to Maturity and is reported for mutual funds.

**Yield to Worst** - The bond yield calculated by using the worst possible yield taking into consideration all call, put, and optional sink dates.



PORTLAND

BOISE

CHICAGO

NEW YORK

**Disclaimer of Warranties and Limitation of Liability** - This document was prepared by RVK, Inc. (RVK) and may include information and data from some or all of the following sources: client staff; custodian banks; investment managers; specialty investment consultants; actuaries; plan administrators/record-keepers; index providers; as well as other third-party sources as directed by the client or as we believe necessary or appropriate. RVK has taken reasonable care to ensure the accuracy of the information or data, but makes no warranties and disclaims responsibility for the accuracy or completeness of information or data provided or methodologies employed by any external source. This document is provided for the client's internal use only and does not constitute a recommendation by RVK or an offer of, or a solicitation for, any particular security and it is not intended to convey any guarantees as to the future performance of the investment products, asset classes, or capital markets.

