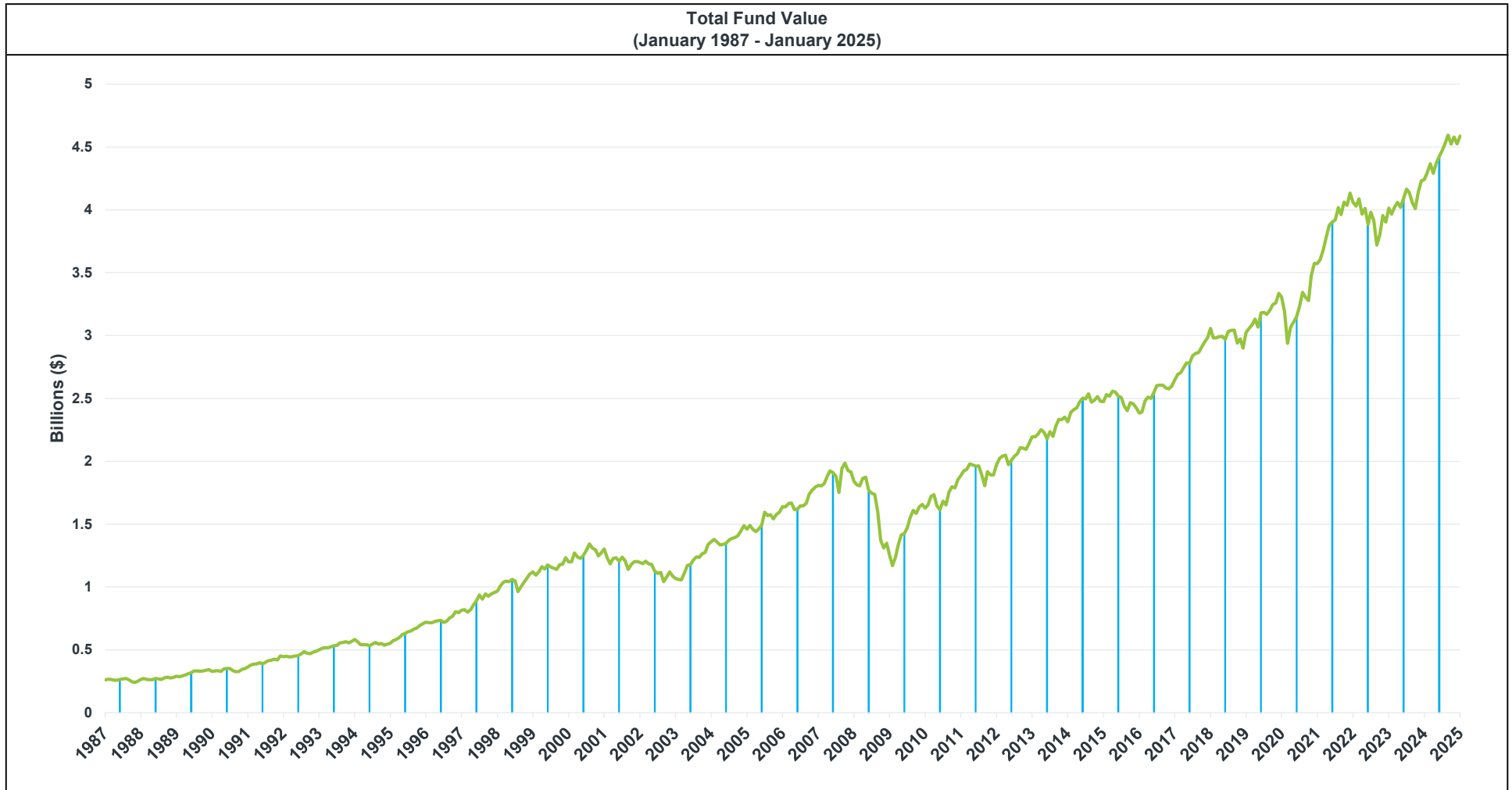


Santa Barbara County Employees' Retirement System
Plan Asset Overview

As of January 31, 2025

	Market Value (\$)	Performance (%)											
		FYTD	FY 2024	FY 2023	FY 2022	FY 2021	FY 2020	FY 2019	FY 2018	FY 2017	FY 2016	FY 2015	Since Incep.
Total Fund	4,586,667,693	4.34	8.73	7.09	0.28	25.20	-0.10	7.74	7.80	10.49	1.37	0.42	8.19



Market values and performance shown are preliminary and subject to change. Performance shown is net of fees and is annualized for periods greater than one year. The fiscal year for Santa Barbara County Employees' Retirement System ends 06/30. Inception date for the Total Fund is 01/01/1987. Total Fund performance excludes Treasury Cash.