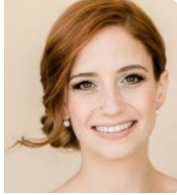


THECHAMBERALX

Leadership Alexandria

Class of 2020-2021



Jackie Barbarito

Administrator of Assisted Living at Goodwin House Incorporated

<https://www.linkedin.com/in/jacquelinebarbarito/>



Emily Bryan

Principal at Cooley Public Strategies

<https://www.linkedin.com/in/emilyrbryan/>



Justin Carl

Principal Engineer at Brown and Caldwell



Walter Clarke

Vice President - Business Banking Officer at Burke & Herbert Bank

<https://www.linkedin.com/in/walter-clarke-b4462425/>



Allison Deines

Senior Policy Analyst at Alexandria Renew Enterprises

<https://www.linkedin.com/in/allison-deines-749a5444/>



Anna Ferguson

National Industries for the Blind

<https://www.linkedin.com/in/anna-ferguson-1b12426/>

Federico Gutierrez

City of Alexandria Department of Community Health Services

<https://www.linkedin.com/in/federico-gutierrez-478a20111/>



Diana Hartman

Associate Vice President at Michael Baker International

<https://www.linkedin.com/in/diana-hartman-aicp-pmp-leed-ga-env-sp-96b31410/>



Michelle Millben

CEO, Founder at Explanation Kids

<https://www.linkedin.com/in/michellemillben/>



Sarah Mirzakhani

IT Principal at CliftonLarsonAllen LLP (CLA)

<https://www.linkedin.com/in/sarah-mirzakhani-bb56391/>



William Parker

Director, Disability Employment | Training & Professional Development | Project & Program Management | Recruiting at National Industries for the Blind

<https://www.linkedin.com/in/billy-parker-73217918b/>



Christopher Preston

Vice President Corporate Relations at United Way Worldwide

<https://www.linkedin.com/in/chris-preston-2054633/>



Scott Reamy

External Affairs Manager at Dominion Energy

<https://www.linkedin.com/in/reamysp/>

Melissa Robinson

Amazon in the Community - Global Employee Engagement at Amazon

<https://www.linkedin.com/in/melissa-robinson-7624aa7/>



Mya Shackelford

Program Manager, PTA-CAS and Student Pipeline Initiatives at American Physical Therapy Association

<https://www.linkedin.com/in/mya-shackelford/>



Daniel Teka

Supply Chain Director at Inova Alexandria Hospital

<https://www.linkedin.com/in/dan--/>



Willie "W.J." Williams, Jr.

W2W Technologies

<https://www.linkedin.com/in/willie-w-j-williams-jr-pmp-a900b44b/>