

YOUR LOCAL MARKET'S MARKET UPDATE

DEL MAR, CA

- **Current Real Estate Market Conditions for Single Family Homes**
- **Trends in Pricing**
- **Current Levels of Supply and Demand**
- **Value Metrics**

- **Report for the week of
September 04, 2017**

This Week

- The median list price in DEL MAR, CA this week is \$2,854,500. The 102 properties have been on the market for an average of 129 days.

Inventory has been lightening lately and the Market Action Index has been trending up. Though days-on-market is increasing, these are mildly positive indications for the market.

Supply and Demand

- Home sales have begun exceeding new inventory. This is a Buyer's market so prices are not yet moving higher as excess inventory is consumed. If the tightening continues and the market moves into the Seller's zone, we may see upward pressure on pricing.

Real-Time Market Profile

		Trend
Median List Price	\$ 2,854,500	↔
Average List Price	\$ 5,303,176	
Asking Price Per Square Foot	\$ 983	↑
Average Days on Market (DoM)	129	↑↑
Inventory of Properties Listed	102	↓
Most Expensive Listing	\$ 35,000,000	
Least Expensive Listing	\$ 1,195,000	
Average Age of Listing	32	
Percent of Properties with Price Decrease	46 %	
Percent Relisted (reset DOM)	24 %	
Percent Flip (price increased)	6 %	
Median House Size (sq ft)	3196	
Median Lot Size	0.25 - 0.50 acre	
Median Number of Bedrooms	4.0	
Median Number of Bathrooms	3.5	

Altos Research Value Statistics

Market Action Index Buyer's Advantage 25.6 ↑

The Market Action Index answers the question "How's the Market?" by measuring the current rate of sale versus the amount of the inventory. Index above 30 implies a seller's advantage. Below 30, conditions give the advantage to the buyer.

Trend Key: ↑↑ Strong upward trend ↓↓ Strong downward trend
 ↔ No change ↑ Slight upward trend ↓ Slight downward trend

Characteristics per Quartile

Quartile	Median Price	Sq. Ft.	Lot Size	Beds	Baths	Age	Inventory	New	Absorbed	DOM
Top/First	\$ 8,900,000	4293	0.25 - 0.50 acre	4.0	4.5	19	25	1	0	122
Upper/Second	\$ 3,995,000	3335	0.25 - 0.50 acre	4.0	4.0	27	25	0	1	153
Lower/Third	\$ 2,492,500	3186	0.25 - 0.50 acre	4.0	3.5	32	26	3	3	134
Bottom/Fourth	\$ 1,799,500	2816	6,501 - 8,000 sqft	4.0	3.0	40	26	4	5	109

Most expensive 25% of properties

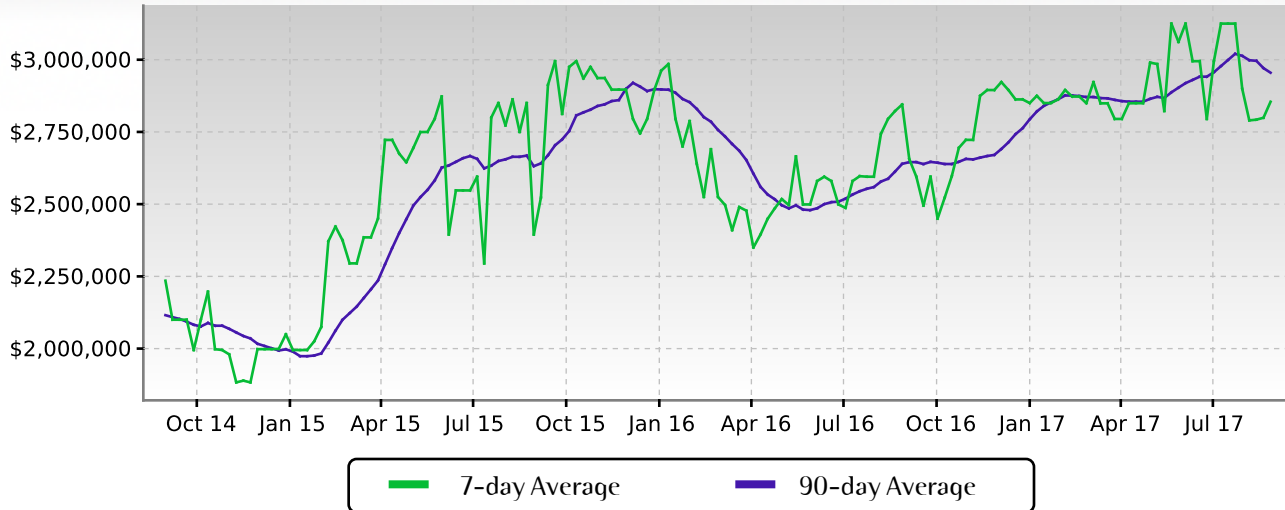
Upper-middle 25% of properties

Lower-middle 25% of properties

Least expensive 25% of properties

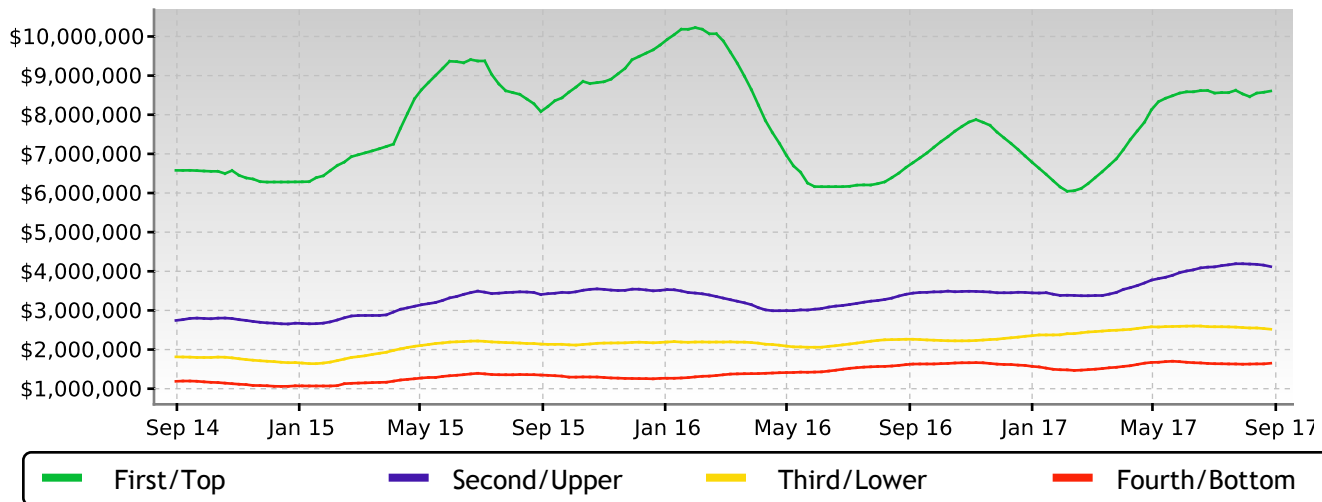
Median Price

Despite this week's up tic, the market seems to have paused around this plateau. The Market Action Index is a good leading indicator for the durability of this shift.



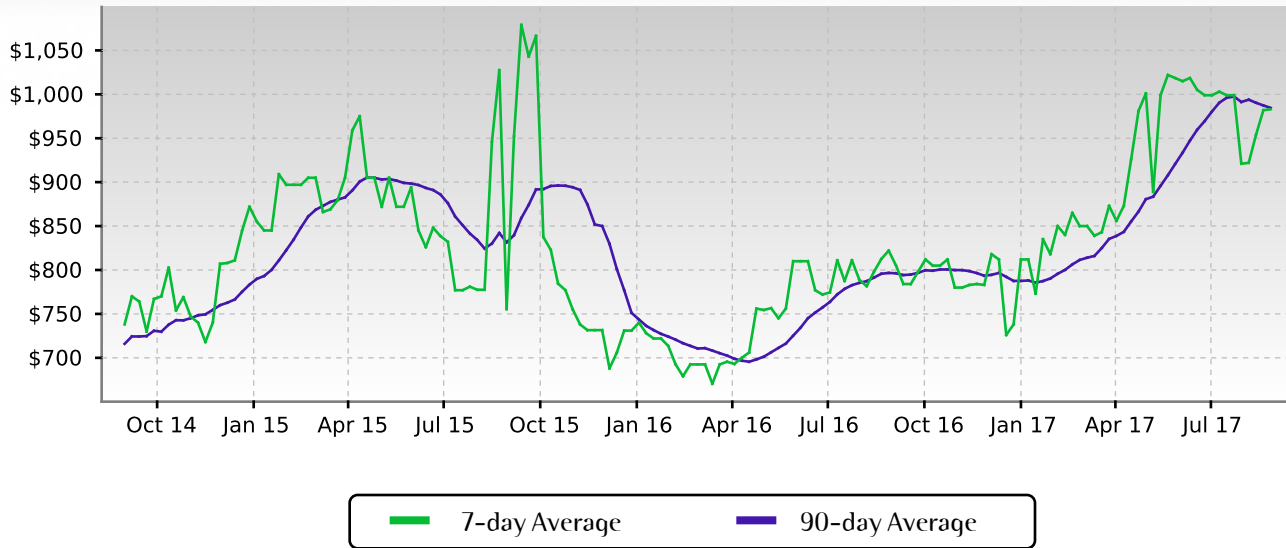
Quartile Prices

Prices have settled at a price plateau across the board. Prices in all four quartiles are basically mixed. Look for a persistent shift (up or down) in the Market Action Index before prices move from these current levels.



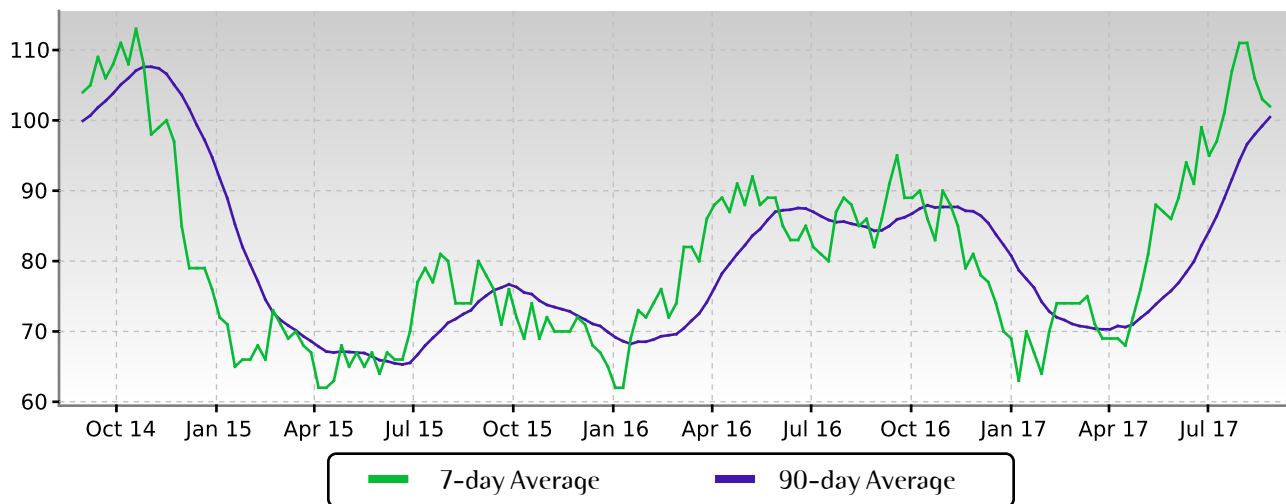
Price per Square Foot

The value placed on homes seems to be trending up, despite the fact that prices in general have remained basically flat. These conditions can arise when inventory is light and more, smaller homes have more influence on overall prices.



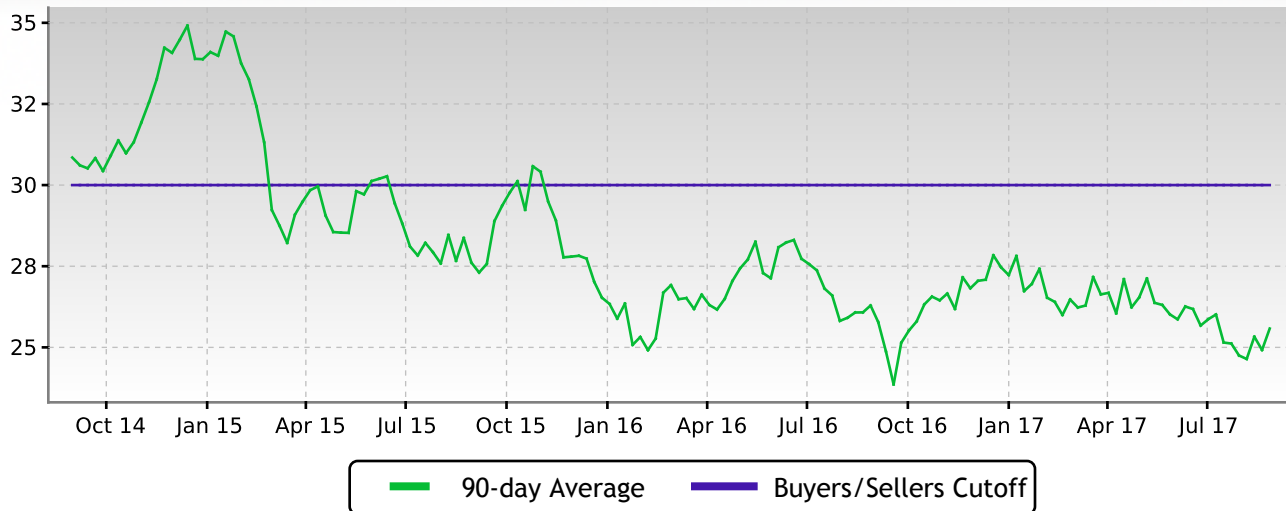
Inventory of Properties Listed for Sale

Inventory has been falling in recent weeks. Note that declining inventory alone does not signal a strengthening market. Look to the Market Action Index and Days on Market trends to gauge whether buyer interest is changing with the available supply.



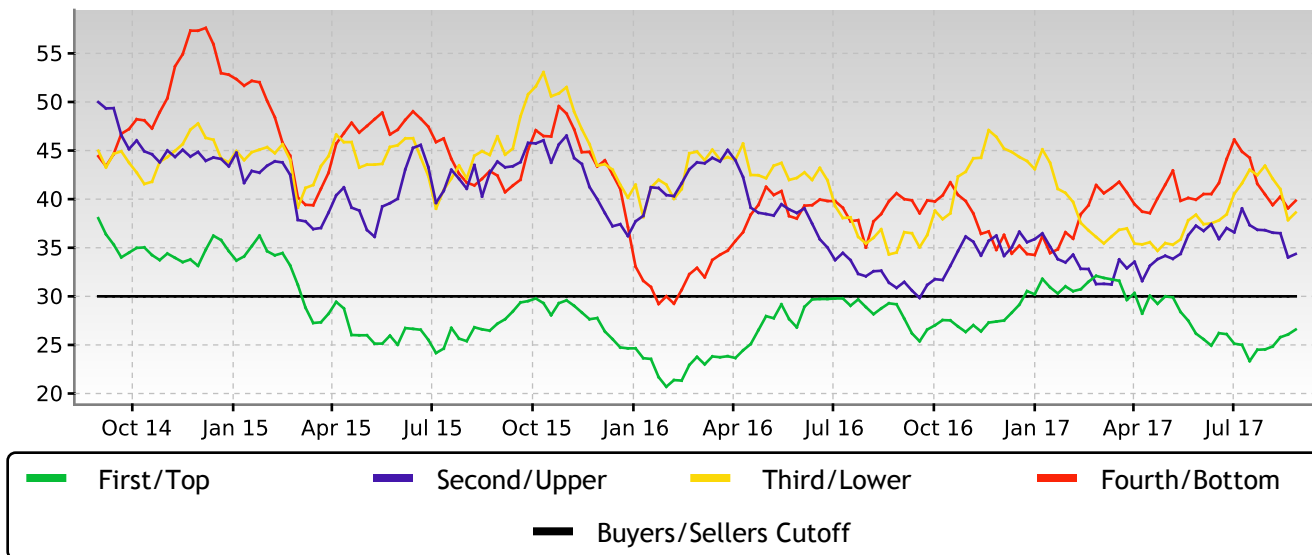
Market Action Index

The DEL MAR market is currently in the Buyer's Advantage zone (below 30), though not strongly so. The 90-day Market Action Index stands this week at 25.58 so buyers should expect to find reasonable levels of selection.



Market Action Index per Quartile

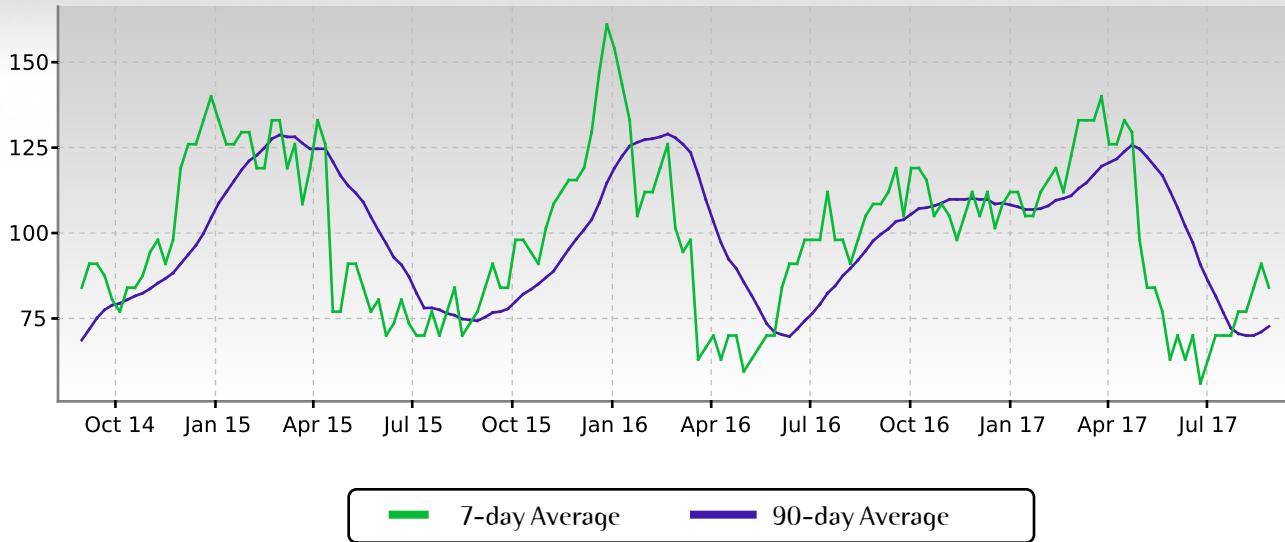
Three of the four quartiles of the market are in the Seller's Market zone with relatively low amounts of inventory given the current rate of demand for homes in the quartile. Notice that Quartile 1 (the highest-end price group) is showing weaker demand than the others. It's not uncommon that the premium segment of the market takes longer to sell than the rest of the group.



Residential house prices are a function of supply and demand, and market conditions can be characterized by analyzing those factors. Watch this index for sustained changes: if the index falls into the Buyer's Advantage zone (below 30) for a long period, prices are likely in for a downward correction.

Days on Market

The properties have been on the market for an average of 129 days. Half of the listings have come newly on the market in the past 84 or so days.



Days on Market per Quartile

It is not uncommon for the higher priced homes in an area to take longer to sell than those in the lower quartiles.

