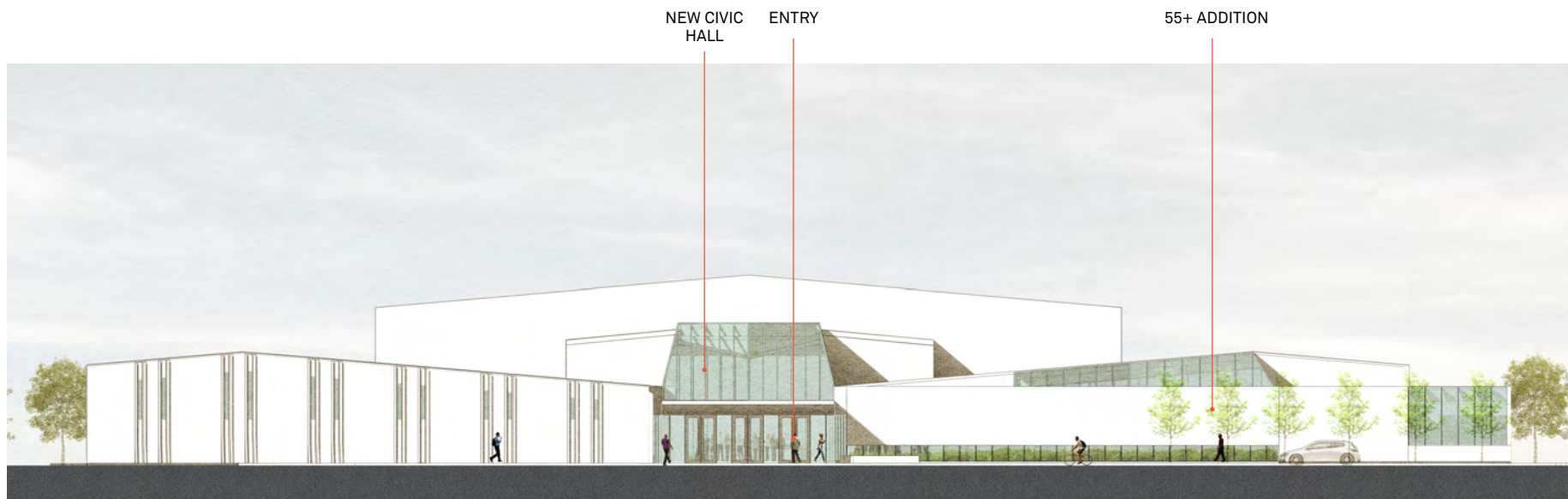


**SECTION** CIVIC HALL + ENTRY PLAZA



**PERSPECTIVE** 55+ LOUNGE & COMMUNITY KITCHEN



EXISTING POOL      CIVIC HALL      55+ CENTRE ADDITION

**SOUTH ELEVATION** 55+ ADDITION AND NEW CIVIC HALL



**PERSPECTIVE** CIVIC HALL LOOKING SOUTH

