



Join us for Walk to School Day!

Wednesday, October 10, 2018

What:

Join schools from around the world to celebrate International Walk to School Day!

- Students from New Ulm Middle School, Jefferson Elementary, St. Paul Elementary and St. Anthony Elementary are invited to walk to school along with parents, teachers and community leaders in a "Walking School Bus."
- There will be not be any organized groups for biking, but we highly encourage students (and their parents) to bike to school on their own.

Why:

The Walk to School Day event helps us promote safer routes for students who walk or bike in our community. It also helps to promote physical activity for our students, and build connections between our families, schools and community.

Look inside:

- **How it works**
- **Walking School Bus Schedule**
- **Drop-off locations and maps**



How it works:

- Instead of driving students all the way to school, parents can drop off students and register them to walk at three designated locations in New Ulm.
- From each location, at least two adult volunteer “Walking School Bus drivers” will walk with students to each New Ulm school in the morning.
- We encourage parents who wish to walk with their children to park at one of the locations and join the Walking School Bus.
- We also encourage students and parents who live close to school to still walk and bike from home on their own, too!
- Another option for participation is for parents to drop their children off two to three blocks from school and let them walk the rest of the way and avoid the congestion at school.

Walking School Bus Schedule

Jefferson Elementary & Middle School Campus

School Starts	Location	Departs	Route Distance	Route Time
8:05 a.m.	New Ulm Medical Center	7:30 a.m.	1.1 miles	30 minutes
	Lincoln Park	7:30 a.m.	.7 mile	25 minutes
	Turner Hall	7:40 a.m.	.5 mile	20 minutes

St. Paul Elementary

School Starts	Location	Departs	Route Distance	Route Time
8:00 a.m.	New Ulm Medical Center	7:30 a.m.	.8 mile	25 minutes
	Lincoln Park	7:35 a.m.	.8 mile	25 minutes
	Turner Hall	7:40 a.m.	.6 mile	20 minutes

St. Anthony Elementary

School Starts	Location	Departs	Route Distance	Route Time
8:05 a.m.	New Ulm Medical Center	7:35 a.m.	.8 mile	25 minutes
	Lincoln Park	7:30 a.m.	1 mile	30 minutes
	Turner Hall	7:35 a.m.	.7 mile	25 minutes

Note: Because a Walking School Bus tends to move slower than when students walk on their own, drop-off times have been adjusted accordingly.

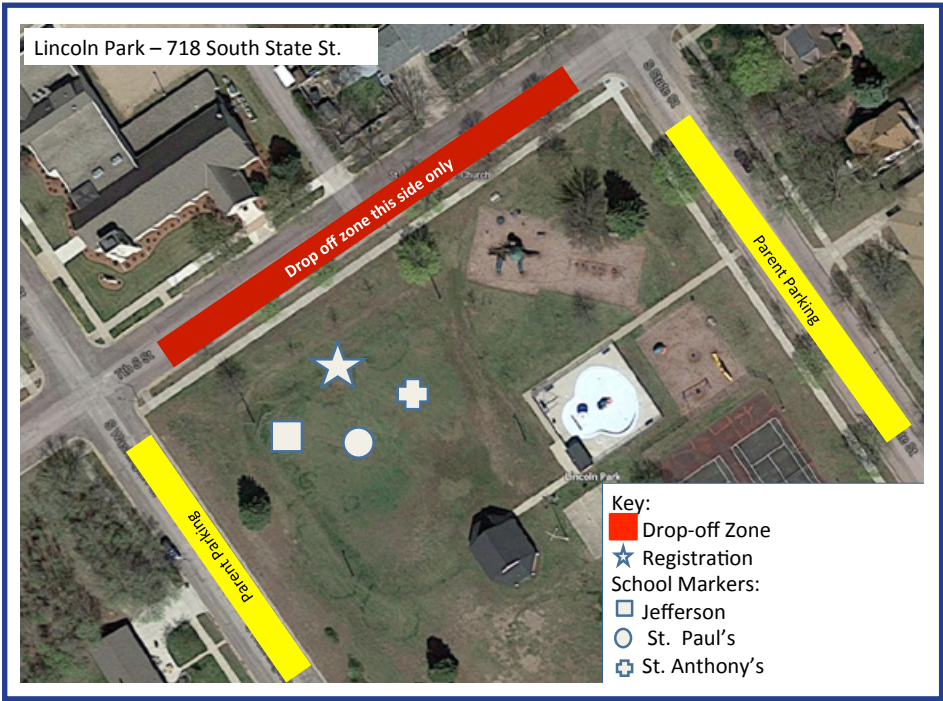
Drop-off location:

New Ulm Medical Center,
1324 5th N. St.



Drop-off location:

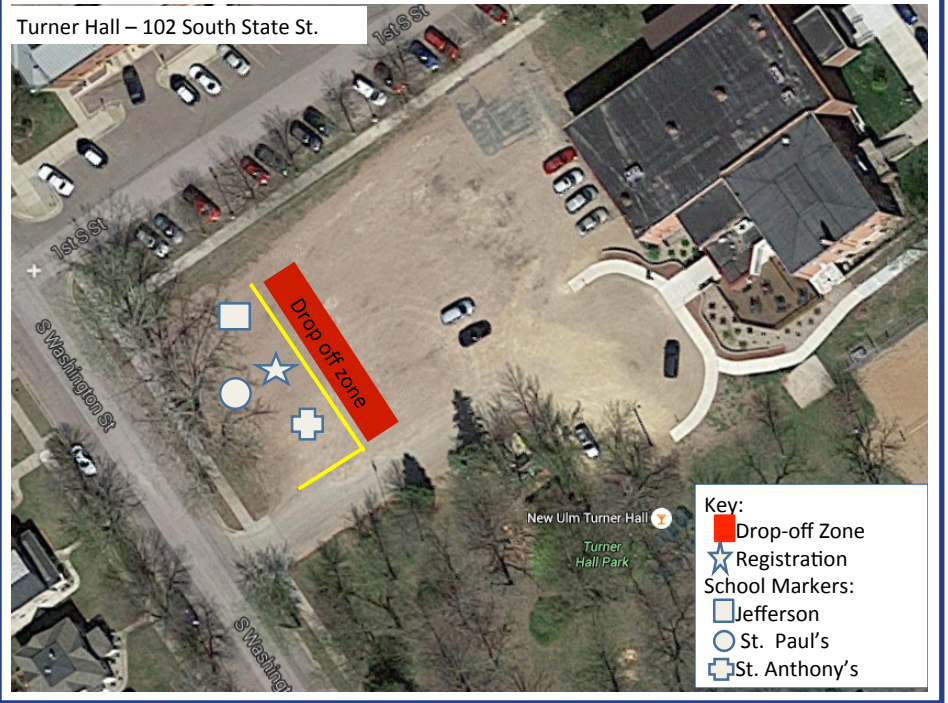
Lincoln Park
718 S. State St.



Turner Hall – 102 South State St.

Drop-off location:

Turner Hall
102 S. State St.
Back parking lot



The Walking School Bus is organized by the Safe Routes to School Action Team, The Heart of New Ulm Project's Leadership Team, New Ulm Schools and Parent-Teacher Organizations.