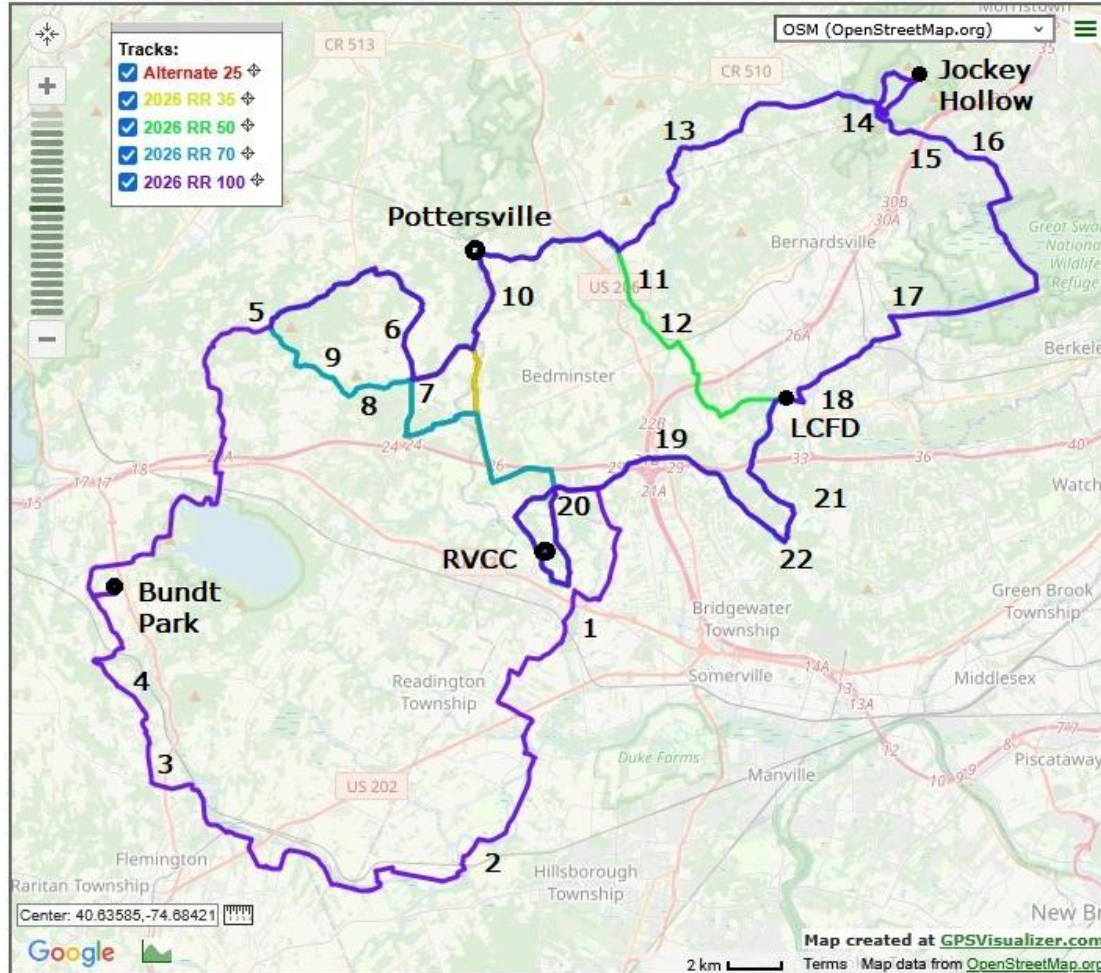


# Ramble 2026 Historic Sites

# Ramble Map of Historic Site Locations



# 1. Historic North Branch Bridge



- Sign at Bridge over Raritan River
- [The North Branch Bridge Historical Marker](#)

## 2. Neshanic Station Truss Bridge



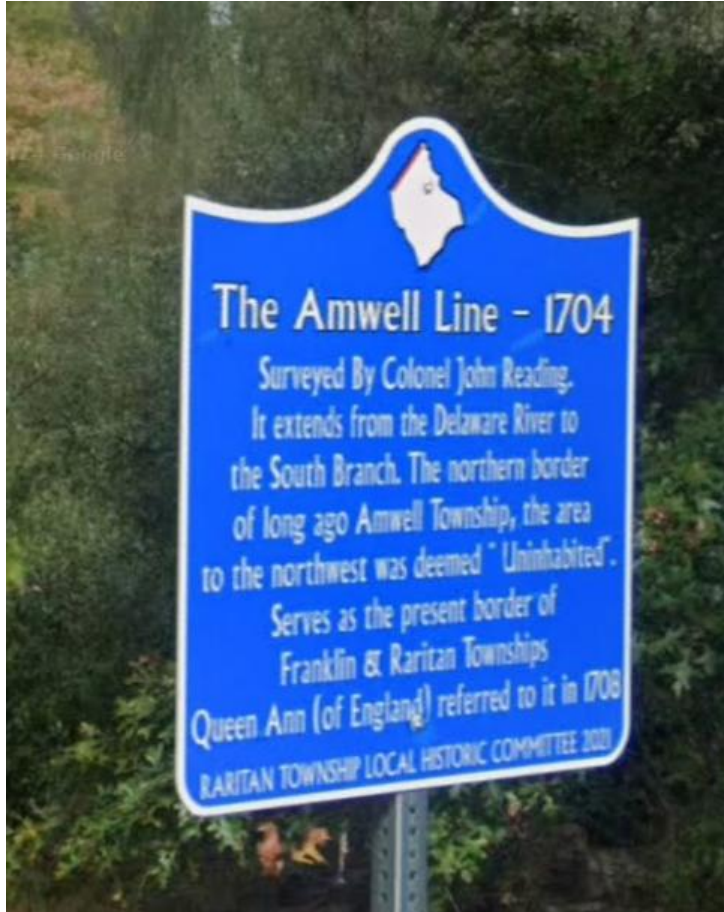
- The **Neshanic Station Lenticular Truss Bridge** is a road bridge built over the [South Branch Raritan River](#) at [Neshanic Station, New Jersey](#). It was constructed by the [Berlin Iron Bridge Co.](#) in 1896.<sup>[2]</sup> and listed on the [National Register of Historic Places](#) as a contributing structure to the [Neshanic Station Historic District](#) on February 8, 201

# 3. Old Clinton Rd Historic District



- Old Clinton Rd Historic District Roadsign marker

## 4. The Amwell Line - 1704



- Surveyed by Colonel John Reading. It extends from the Delaware River to the South Branch. The northern border of long ago Amwell Township, the area to the northwest was deemed "Uninhabited". Serves as the present border of Franklin & Raritan Townships. Queen Ann (of England) referred to it in 1708.

## 5. Mountainville



- The Mountainville Historic District is a [historic district](#) encompassing the village. It was added to the [National Register of Historic Places](#) on December 7, 1993 for its significance in architecture, commerce, community development, and industry.

## 6. Historic Gravesite Marker



- Gravesite - Corner of Homestead Rd and Old Turnpike Rd.

# 7. Oldwick General Store



- Occupying the historic site of the Oldwick General Store, this newly renovated cafe offers a taste of tradition with a modern twist.

# 8. Taylors Mill



- Taylor's Mill is a stone grist mill built circa 1760 by Colonel John Taylor who owned and ran the mill. Taylor, an Englishman by birth, served in the Revolution as a member of the 4th Hunterdon Militia and eventually achieved the rank of General. The mill is located at the southwest corner of Taylor's Mill Road and Rockaway Road on the Readington/Tewksbury border and is one of the last surviving pre-Revolutionary mills. For preservation efforts see:
- <https://www.taylorsgristmill.org/>

# 9. Creek House



- "Creek House", Circa 1700, Enchanting Stone Residence with thatch roof guest cottage nestled in story book setting along the Rockaway Creek embraced by colorful gardens & mature trees, a lush backdrop for historic Creek House.
- Originally part of New Jersey's largest dairy farm, there are also reports that the home was a stop on the Underground Railroad. IBM chairman Thomas J. Watson-- the owner of Creek House in the 1920s and 30s-- once hosted President Herbert Hoover here as they fished for trout in the Rockaway Creek.

# 10. Pottersville Historic District



- The Pottersville Village Historic District is a historic district encompassing the village. The district was added to the National Register of Historic Places on September 18, 1990, for its significance in industry, commerce, architecture, settlement, and archeology from 1750 to 1924.

# 11. Peapack Lime Kilns



- Most people don't know that in 1999, a Peapack land owner donated the lime kilns and the surrounding property to The Historical Society of The Somerset Hills. The Society owns and maintains the kilns and the surrounding area and has continued over the years to raise funds to maintain the property installing the information boards.
- [The Moses Craig Lime Kilns - The Official Site for The Historical Society of the Somerset Hills \(THSSH\)](#)

# 12. Peapack Brook Historic District



- The confluence of Peapack Brook and the North Branch of the Raritan River became a rural industrial center during the 18th century when a saw mill, grist mill, tannery and bark mill were located nearby. The Peapack Brook Rural Industrial Historic District includes five houses, several outbuildings and mill structures that reflect the industrial and agricultural development of the area, ca. 1750 - 1900.

# 13. Union Schoolhouse



- Built and operated as a one room school until 1928, when students transferred to Mendham Borough School. Remodelled as private dwelling after acquisition by Schiff Scout Reservation, 1941.

# 14. Jockey Hollow National Park



- Henry Wick built this Cape Cod Style house around 1750. His 1,400 acre farm, most of which was covered by forest, made him the largest landowner in Morristown. Henry Wick's trees attracted Washington's army to the area as a winter encampment site because they needed logs to build cabins for shelter and wood to burn for heating and cooking. During the winter of 1779-1780 the army chopped down over 600 acres of his trees on Mr. Wick's property and more on his neighbor's properties.

# 15. Mount Kemble / Glen Alpin Estate



- Henry S. Hoyt, wealthy heir of New York merchant and investor Gould Hoyt, built this Gothic Revival house on land purchased from Richard Kemble, the son of prominent loyalist Peter Kemble, in 1840. In 1885 David H. McAlpin, a tobacco manufacturing, banking, real estate, insurance, and natural gas production magnate, bought the 300-acre estate and named it Glen Alpin. His son Charles inherited the estate and deeded a large portion of it to the federal government to create the Morristown National Park.
- Peter Kemble's home, known as "Mount Kemble," was commandeered by American Generals in two successive winters during the Revolutionary War, while soldiers camped on the surrounding property.

# 16. Washington Route Marker



- Following their victory at the [Battle of Princeton](#) on January 3, 1777, General George Washington and the Continental (American) Army went to [Morristown](#) for winter quarters, where they arrived on January 6. A series of thirteen markers traces the route they took.
- The eleventh and twelfth markers in this series are located in Harding Township. The marker pictured is on an island in the middle of the intersection where Blue Mill Road becomes Lees Hill Road, and Village Road turns into Glen Alpin Road.

# 17. Lord Sterling Estate



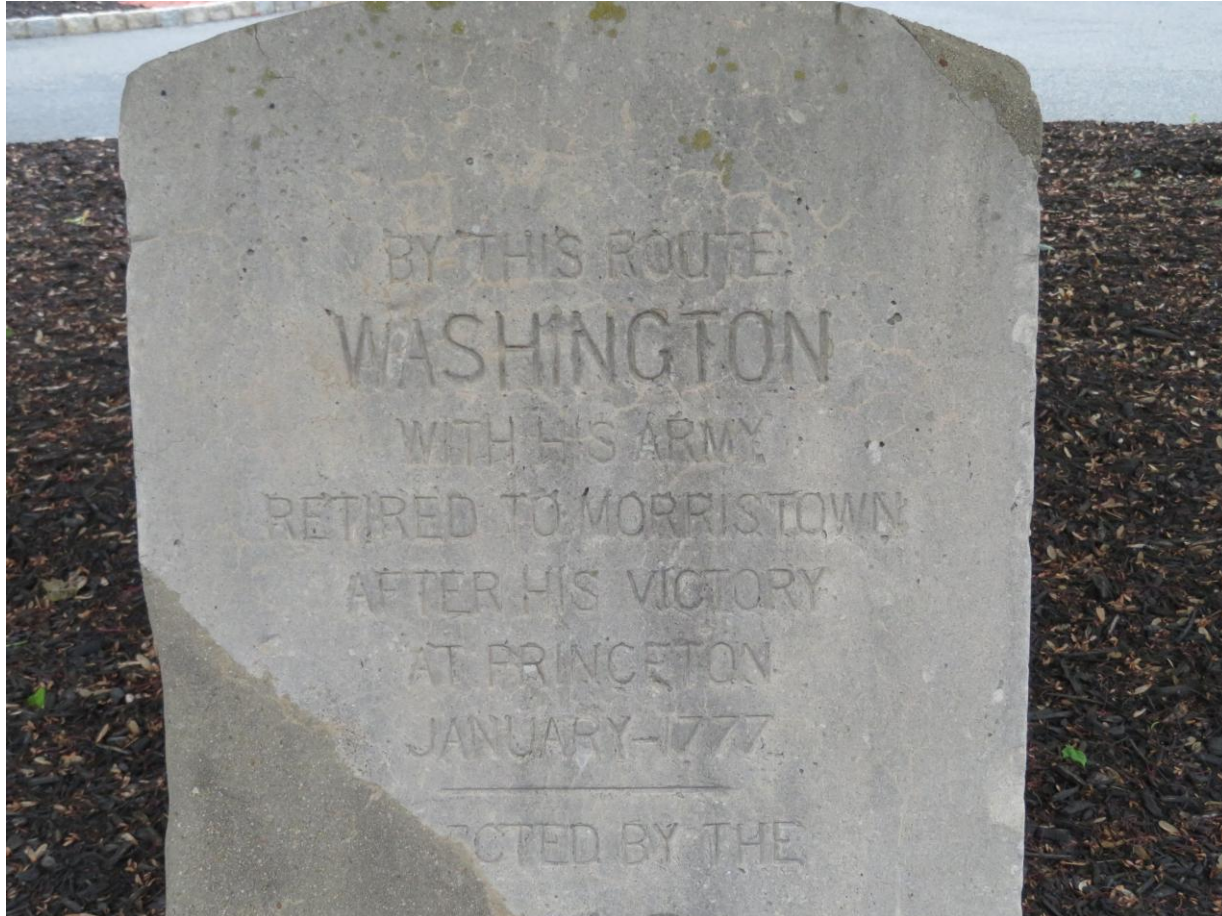
- Lord Stirling, whose birth name was William Alexander, was born in New York City in 1726. He later moved to Basking Ridge. Stirling began his Revolutionary War service as a colonel in the Somerset County Militia. He was later appointed Brigadier General and then Major General in the Continental Army. Lord Stirling was a close friend of George Washington, and one of his most trusted Generals.

# 18. French Encampment 1781 (off route)



- The sign and marble monument note the farmland as the location of the August 29, 1781 encampment of French troops under General Rochambeau, as they marched to Yorktown, Virginia. In Yorktown on October 19, 1781, they fought at the [Battle of Yorktown](#), which proved to be the final and decisive major battle of the Revolutionary War.

# 19. Washington Route Marker



- Following their victory at the [Battle of Princeton](#) on January 3, 1777, General George Washington and his army went to [Morristown](#) for winter quarters, where they arrived on January 6. A series of thirteen markers can be found in New Jersey tracing Washington's army's route from Princeton to Morristown.

## 20. Mill Ruins



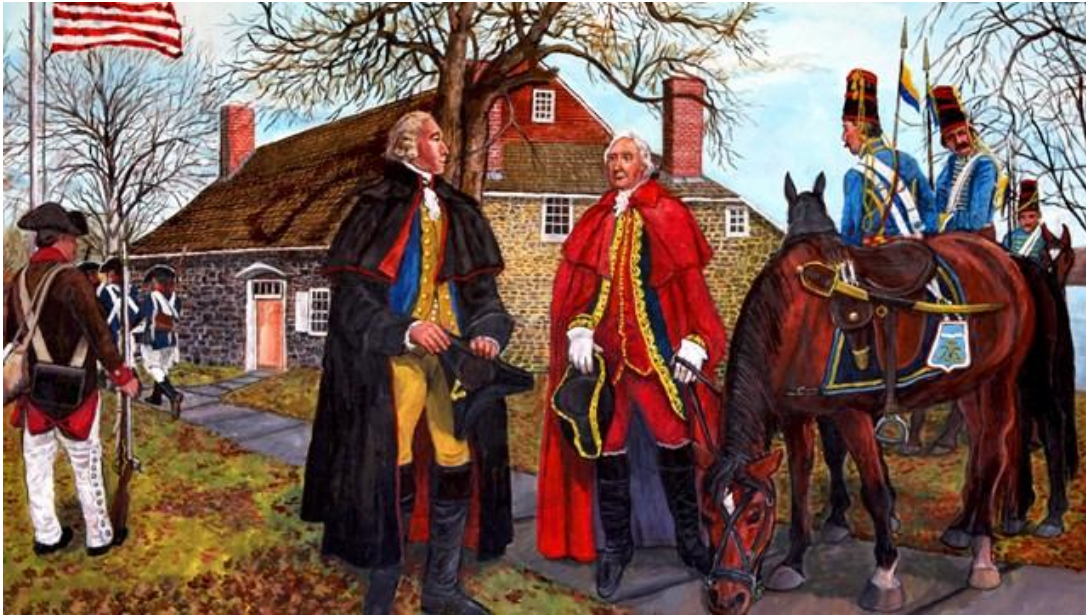
- In 1758 Andrew Leake purchased a mill along the south bank of the Lamington River just before it merged with the Raritan River. During the revolutionary war British soldiers are said to have burnt down this mill, thus giving this region its name.

# 21. Devil's Tree



- This is one sinister looking tree, and according to the locals, who told us of its legends, everyone in the vicinity of Bernards Township seems to have a story about it. They say that at one time a farmer killed his entire family, then went to the tree to hang himself. According to some, numerous suicides and murders occurred around the evil arbor. Supposedly anyone who tries to cut down the tree comes to an untimely end, as it is now cursed.

## 22. Washington – Rochambeau Route marker



- The Washington-Rochambeau Revolutionary Route NHT encompasses over 680 miles of land and water trails through Massachusetts, Rhode Island, Connecticut, New York, New Jersey, Pennsylvania, Delaware, Maryland, Virginia and Washington D.C.

# More information

- Thanks to Morris County Historic Society for supporting us
- Revolutionary War New Jersey has a lot of information
- <https://www.revolutionarywarnewjersey.com/index.htm>
- The Morris County Celebration of the 250<sup>th</sup> anniversary of the Revolutionary War begins this year