


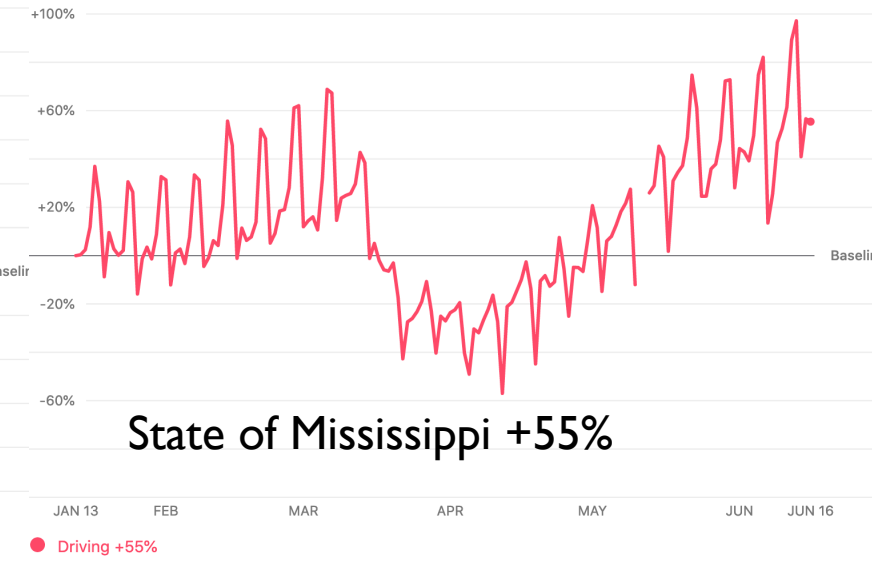
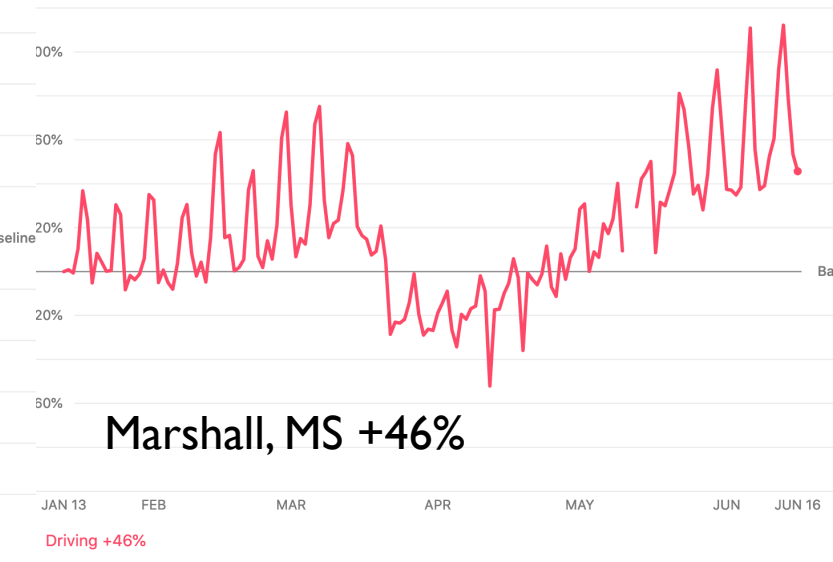
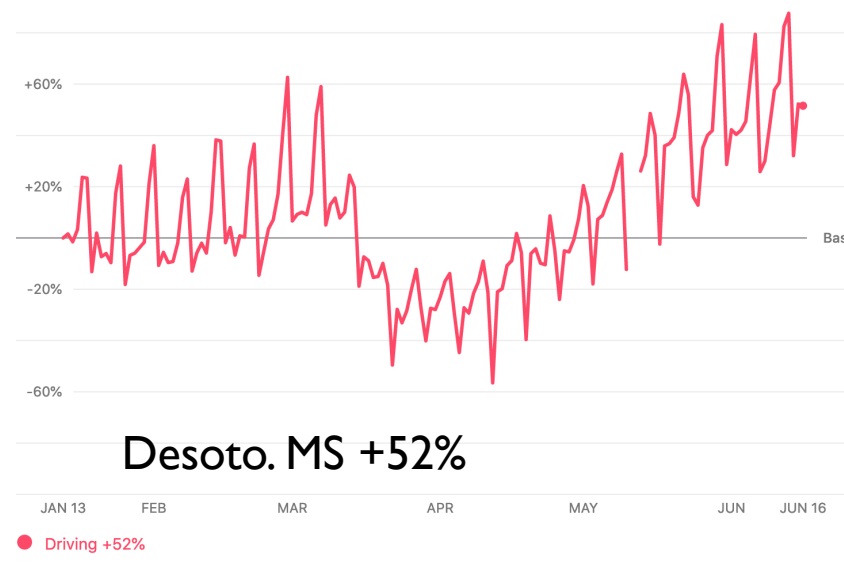
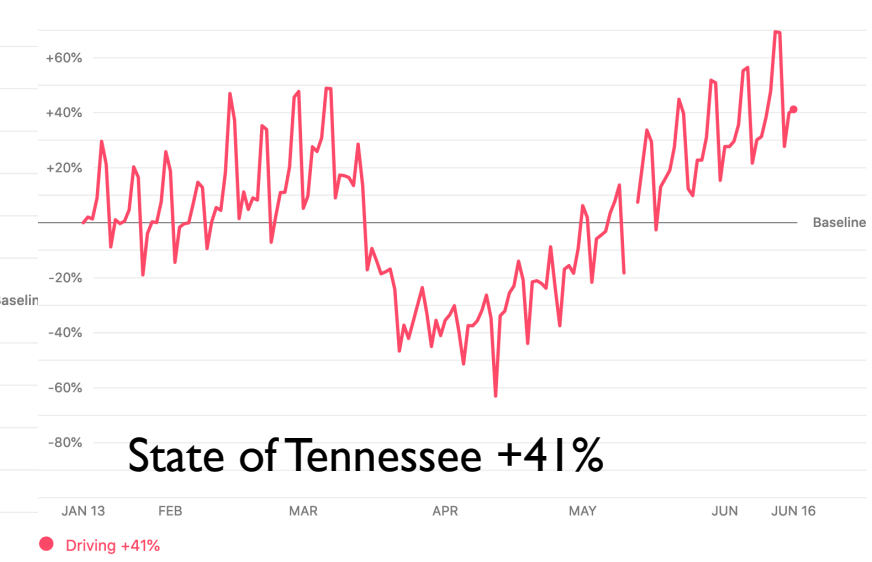
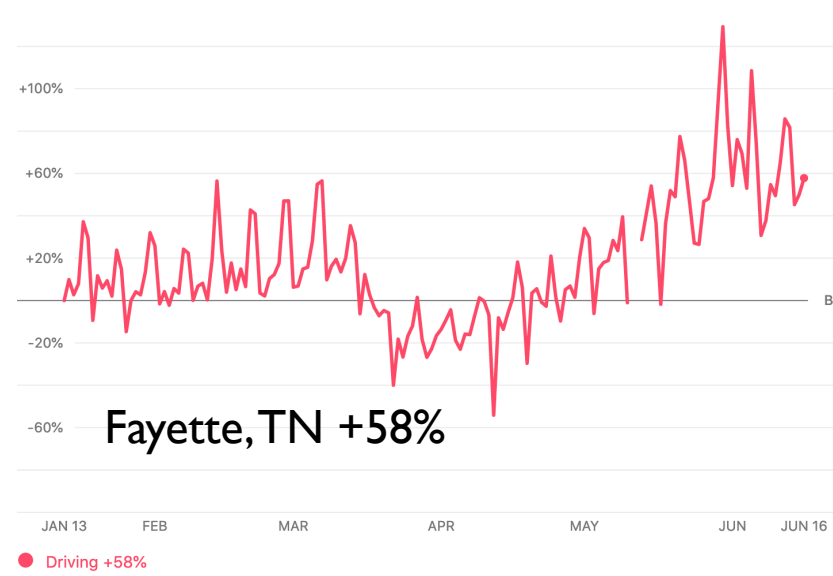
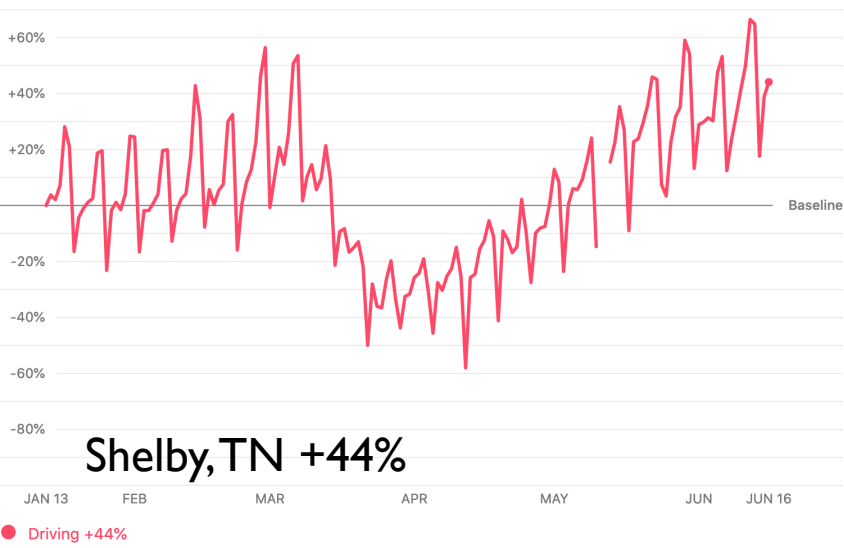


COVID-19

TRAVEL IMPACTS



Both Google® and Apple ® have published Mobility Reports, reflecting mobility trends throughout different communities. The next couple of slides is data compiled by the MPO Staff for the 4 County MPO region highlighting the percent change in overall travel/trips as well as visits to places like grocery stores, parks. Etc.



	Shelby, TN (% change)	Fayette, TN (% change)	State of Tennessee (% change)	Desoto, MS (% change)	Marshall, MS (% change)	State of Mississippi (% change)
Retail & Recreation	-12%	-3%	-5%	-6%	-9%	-15%
Grocery & Pharmacy	-1%	NA	+7%	+6%	NA	-3%
Parks	0	NA	+102%	+17%	NA	+9%
Transit Stations	-27%	-1%	-13%	-15%	NA	-9%
Workplaces	-17%	-20%	-16%	-11%	-12%	-19%
Residential	+4%	+10%	+2%	+3%	NA	+6%

NA- Not enough data

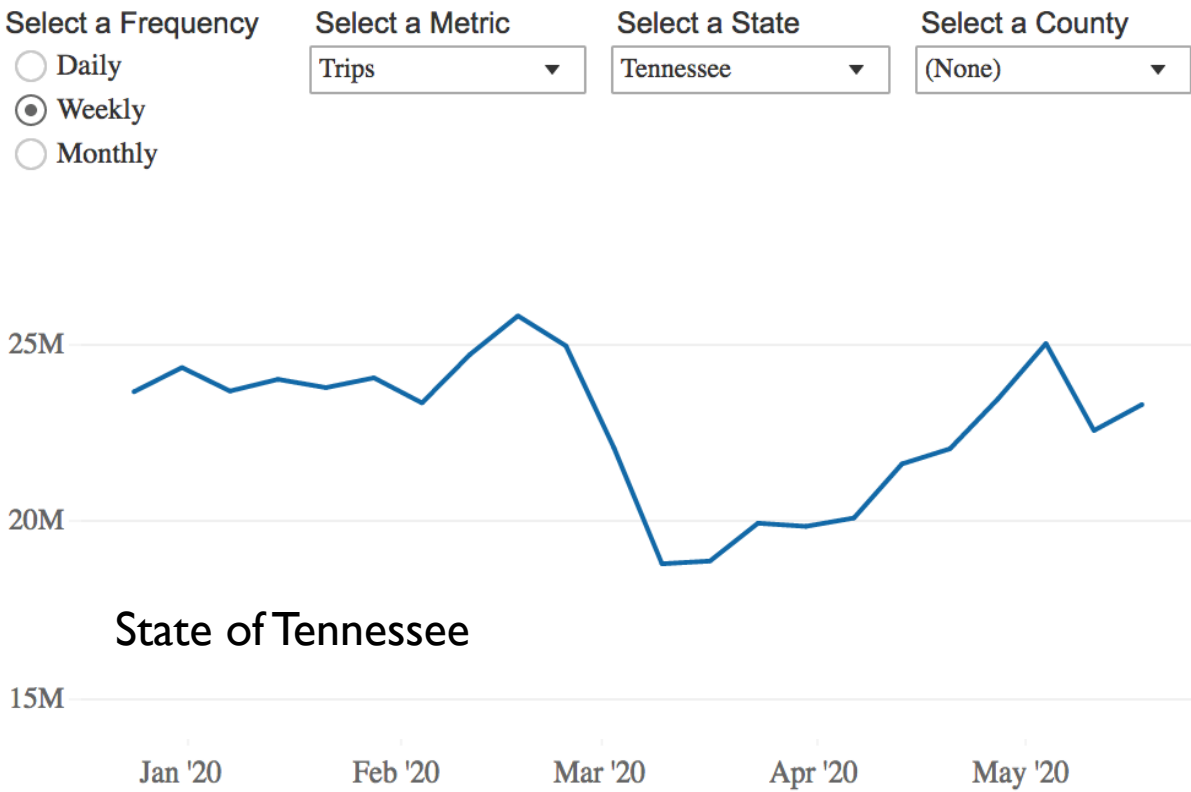
Source: Google - COVID-19 Community Mobility Report, April 26-June 7, 2020 - <https://www.google.com/covid19/mobility/>



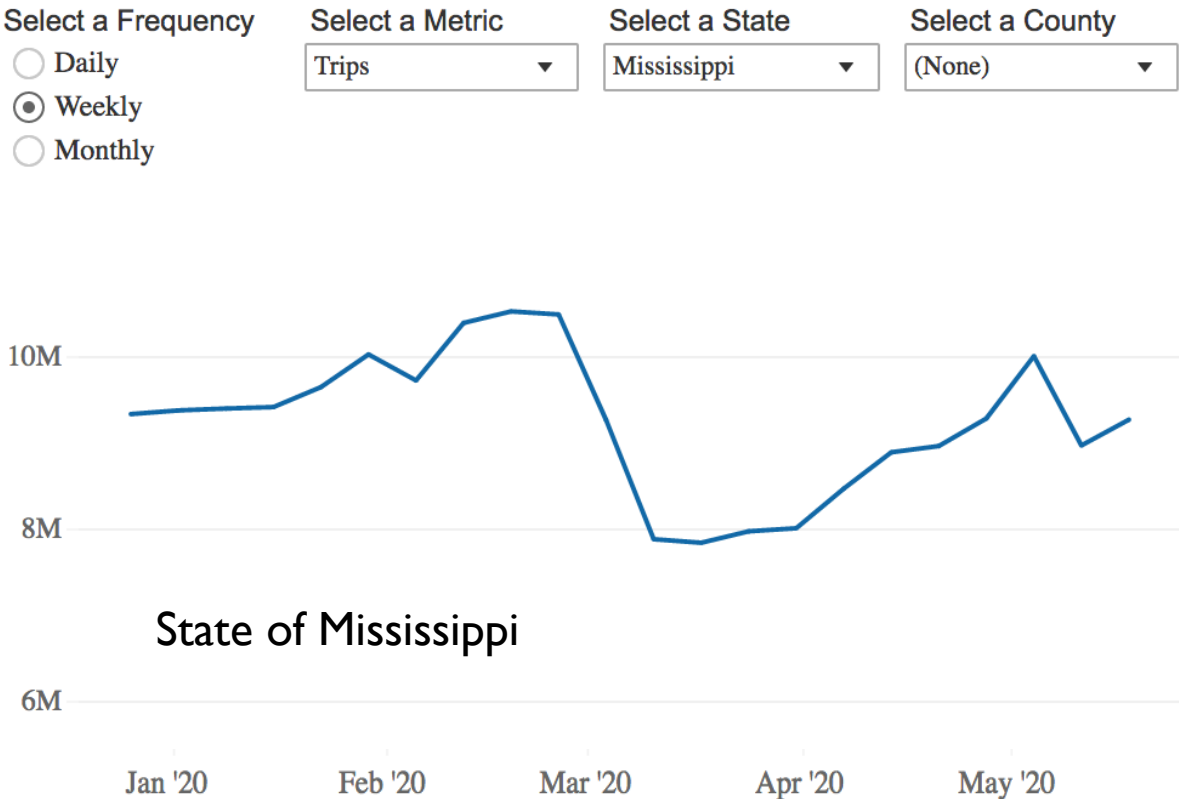
On the following two slides are graphs of the weekly average of **trips** per day over the first 5 months of 2020 in Tennessee and Mississippi, respectively.


The two States follow a very similar trajectory, with trips slowly returning to almost pre-shutdown levels slowly over April and May. However, since summer typically involves higher levels of travel than other times of the year, travel in May was still likely not back up to levels in a "normal" year.

Trips per Day



Trips per Day



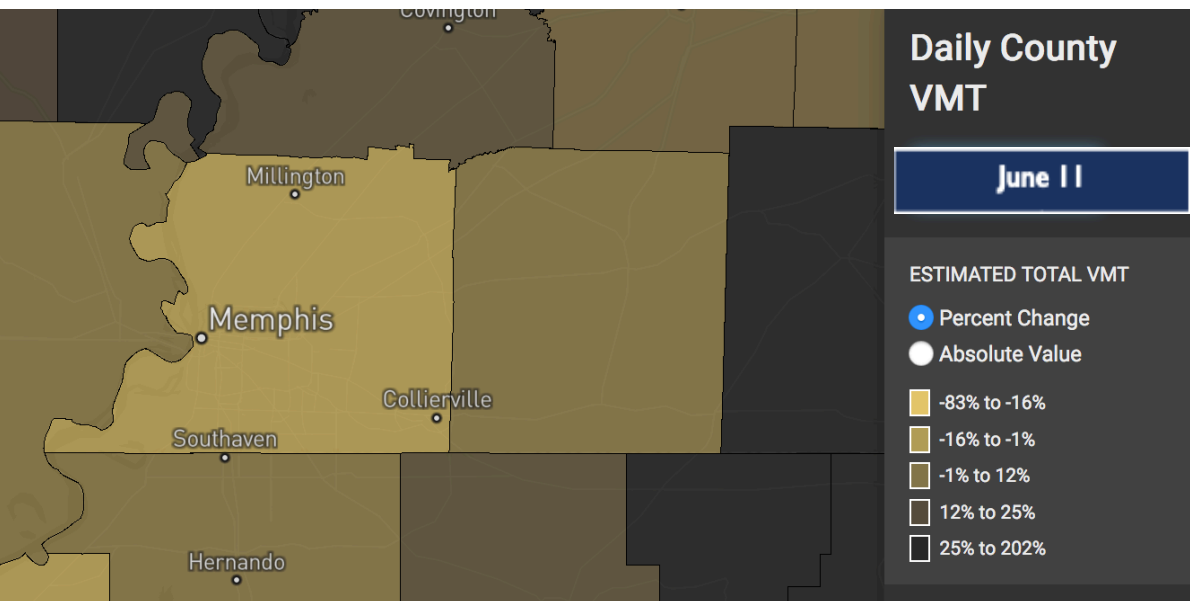
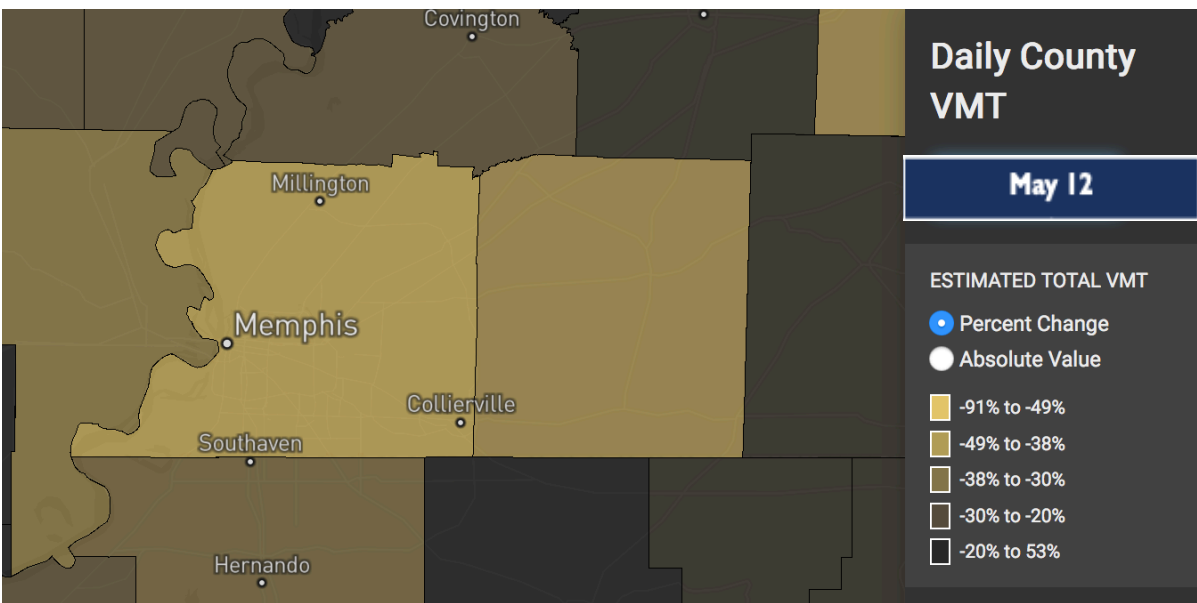
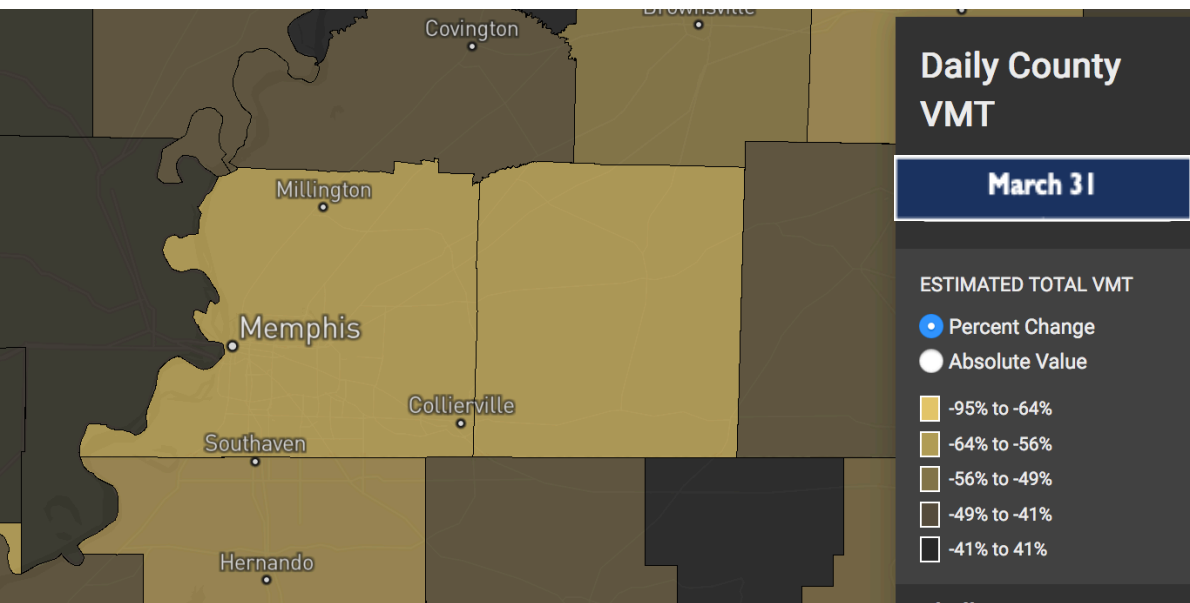


The next slide, show the percentage change in **Vehicle Miles Travelled (VMT)** compared to a baseline of January 2020, using average daily VMT. In Memphis, the "Safer at Home" order was issued on March 24. MPO staff selected three dates to represent:

- 1) The point of least travel in early stages of the order,
- 2) A date in phase I of reopening, and
- 3) The latest available weekday data.

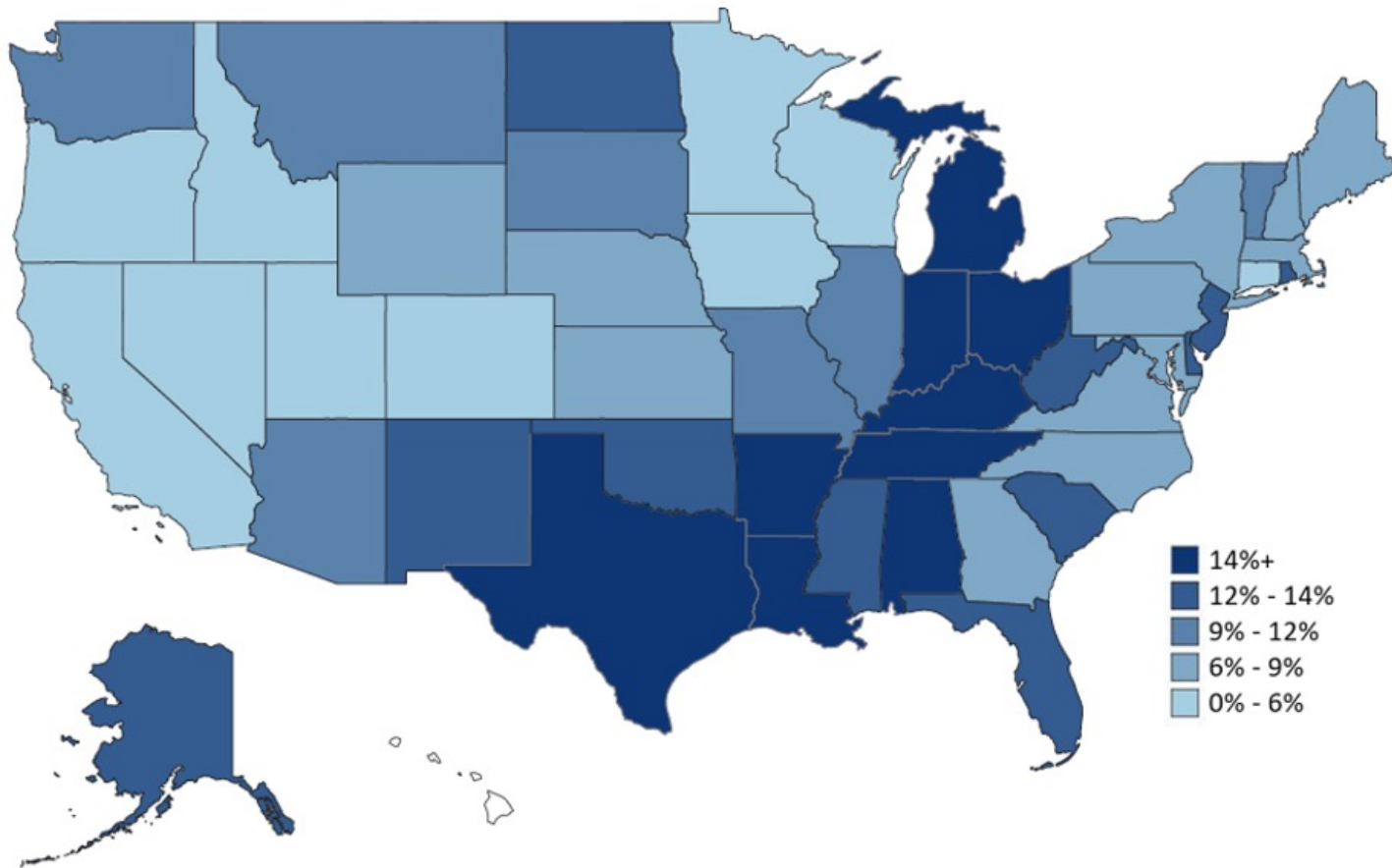
The maps and the table shows the MPO region plus a few surrounding counties.





March 31		May 12		June 11	
Shelby, TN	-64%	Shelby, TN	-48%	Shelby, TN	-12%
Desoto, MS	-57%	Desoto, MS	-33%	Desoto, MS	+5%
Marshall, MS	-47%	Marshall, MS	-10%	Marshall, MS	+17%
Fayette, TN	-60%	Fayette, TN	-40%	Fayette, TN	+5%
Crittenden, AR	-40%	Crittenden, AR	-37%	Crittenden, AR	+3%





## **Freight Traffic**

The national map showing decline in freight VMT by state

Key highlights of the study include:

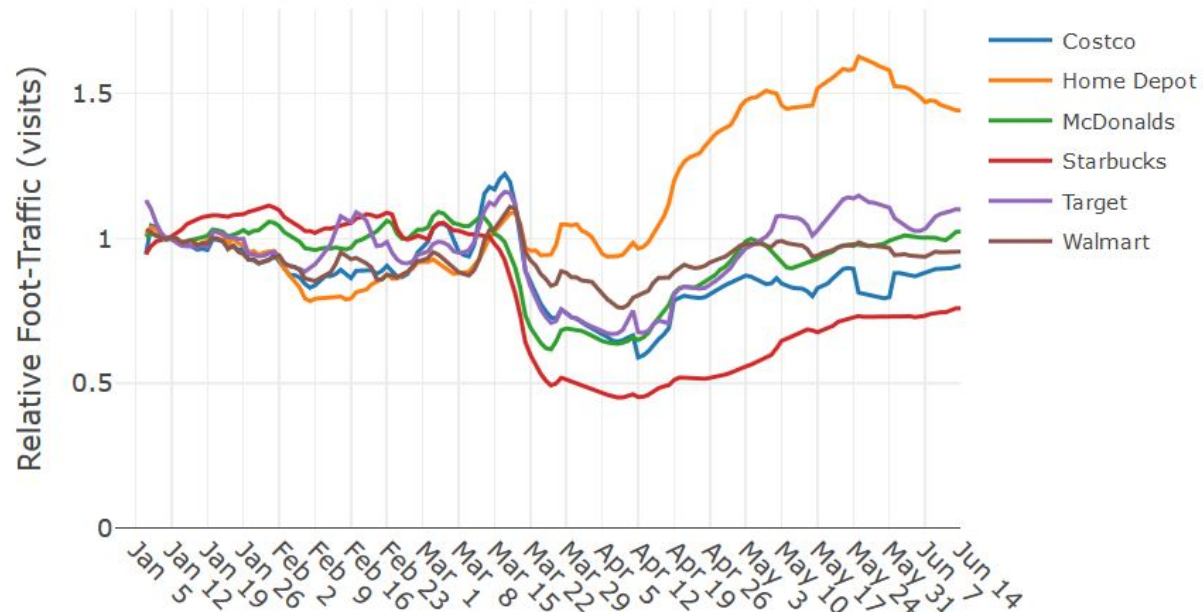
- Commercial truck travel is down 13 percent nationwide
- Manufacturing and oil states have seen the largest drops, led by Michigan (-37%), Kentucky (-20%) and Texas (-20%);
- Freight-heavy corridors in urban areas have seen significant travel speed increases, reducing barriers to move goods faster.
- Tennessee & Arkansas has seen a 14% decline in freight vehicle miles travelled and Mississippi 12-14%.

# FREIGHT VMT DECLINES BY STATE (THROUGH APRIL 17)

# Safegraph Data

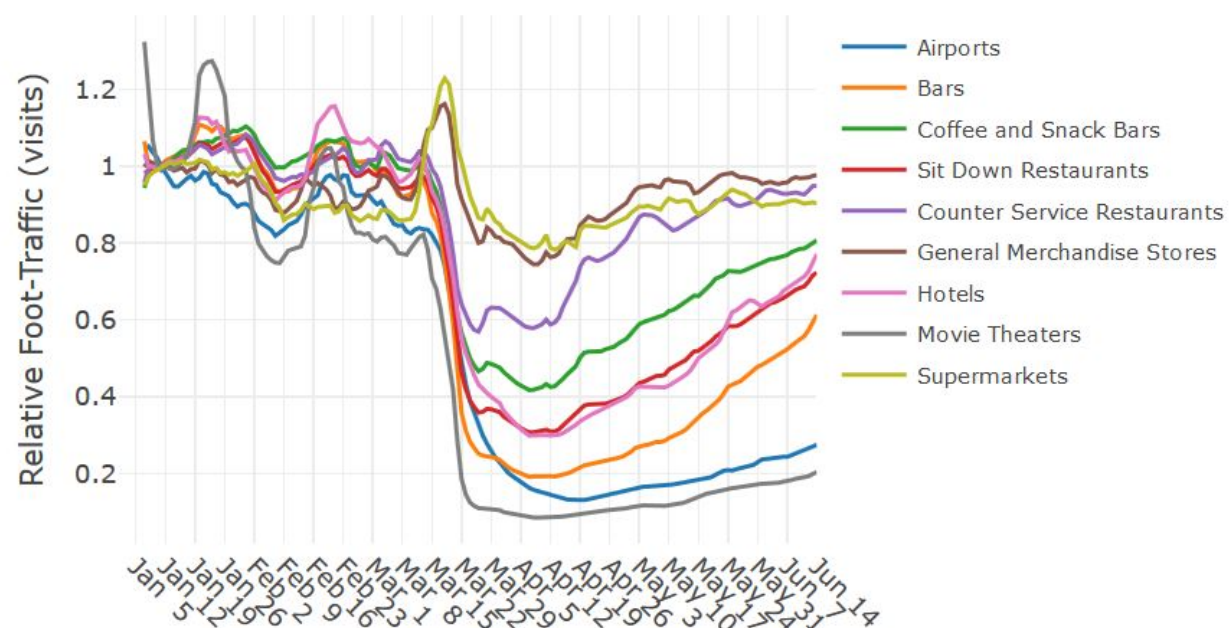
## BRAND SPECIFIC PATTERNS

All Brands



## INDUSTRY LEVEL PATTERNS

All Industries



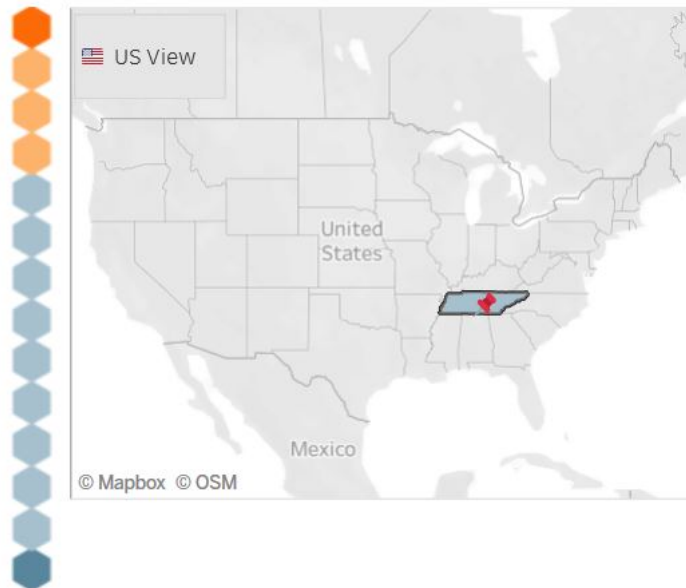
Commercial activity (foot traffic trends) compared to the same time period from previous years to share insights into how the ongoing pandemic is impacting the US economy and disrupting daily life.

## FOOT TRAFFIC TRENDS – RETAIL AND INDUSTRY (UNITED STATES)

# Safegraph Data

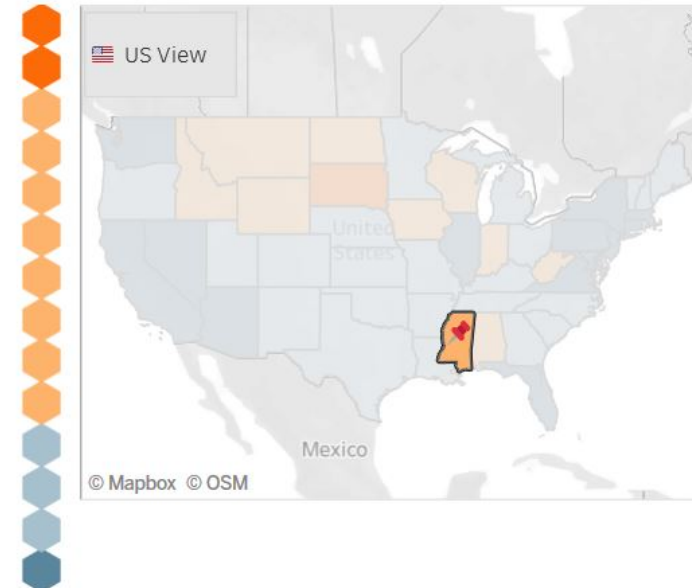
## Most recovered industries in Tennessee

- 1 Home Goods & Improvement
- 2 Miscellaneous Goods
- 3 Auto Dealerships & Car Rentals
- 4 Grocery & Food Retail
- 5 Clothing & Accessories
- 6 Pets
- 7 General Retail
- 8 Beauty & Grooming
- 9 Restaurants
- 10 Entertainment & Hobby
- 11 Healthcare
- 12 Services
- 13 Wellness & Fitness
- 14 Travel & Hospitality



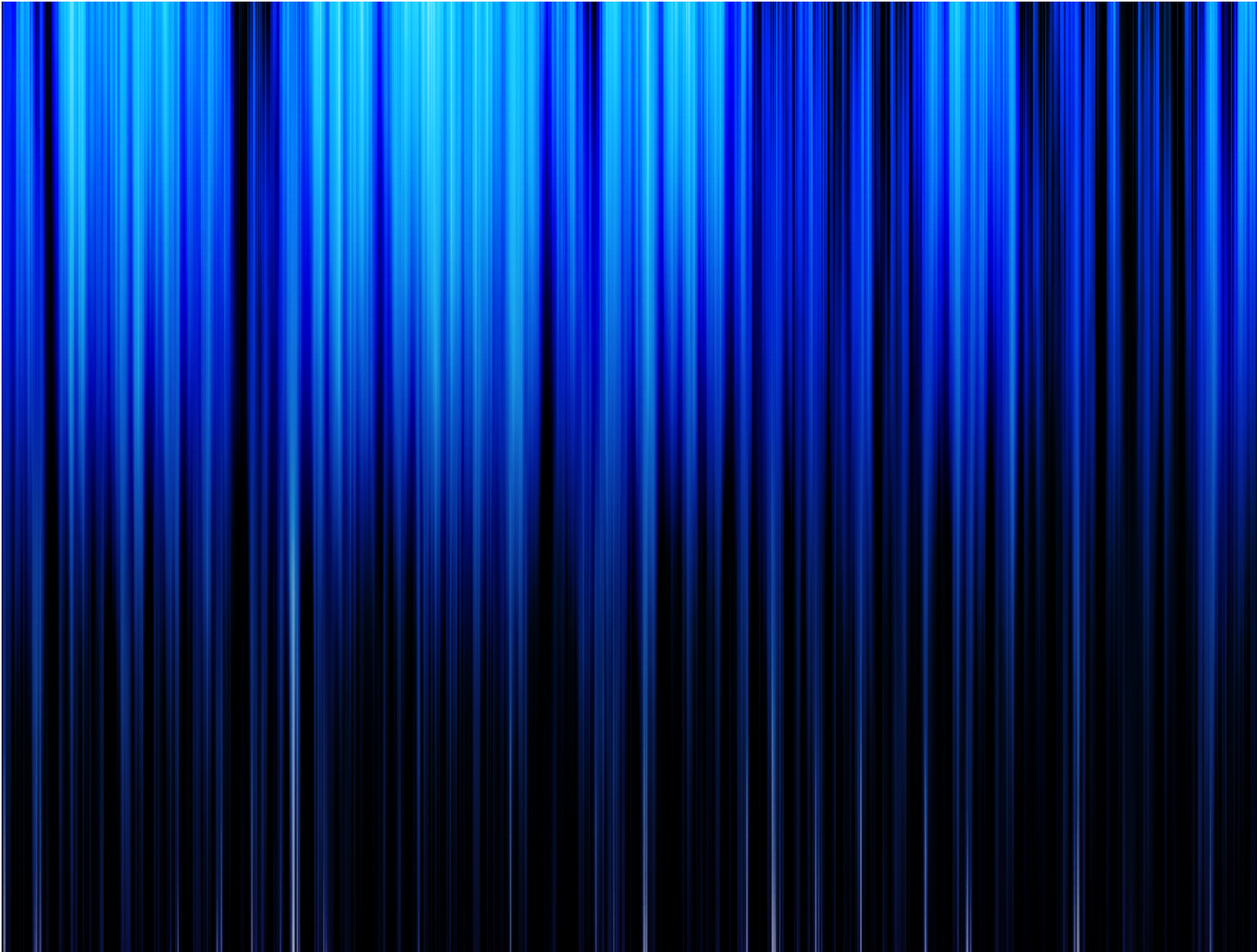
## Most recovered industries in Mississippi

- 1 Home Goods & Improvement
- 2 Pets
- 3 Miscellaneous Goods
- 4 Auto Dealerships & Car Rentals
- 5 Entertainment & Hobby
- 6 Beauty & Grooming
- 7 Clothing & Accessories
- 8 Grocery & Food Retail
- 9 General Retail
- 10 Services
- 11 Restaurants
- 12 Wellness & Fitness
- 13 Healthcare
- 14 Travel & Hospitality



Shows how the economy is re-opening up. Uses data from over 5,500 retail chains, and 3 million mom-and-pop businesses

## INDUSTRY & ECONOMIC RECOVERY – TN & MS



QUESTIONS?

[JORDAN.SMITH@MEMPHISTN.GOV](mailto:JORDAN.SMITH@MEMPHISTN.GOV)