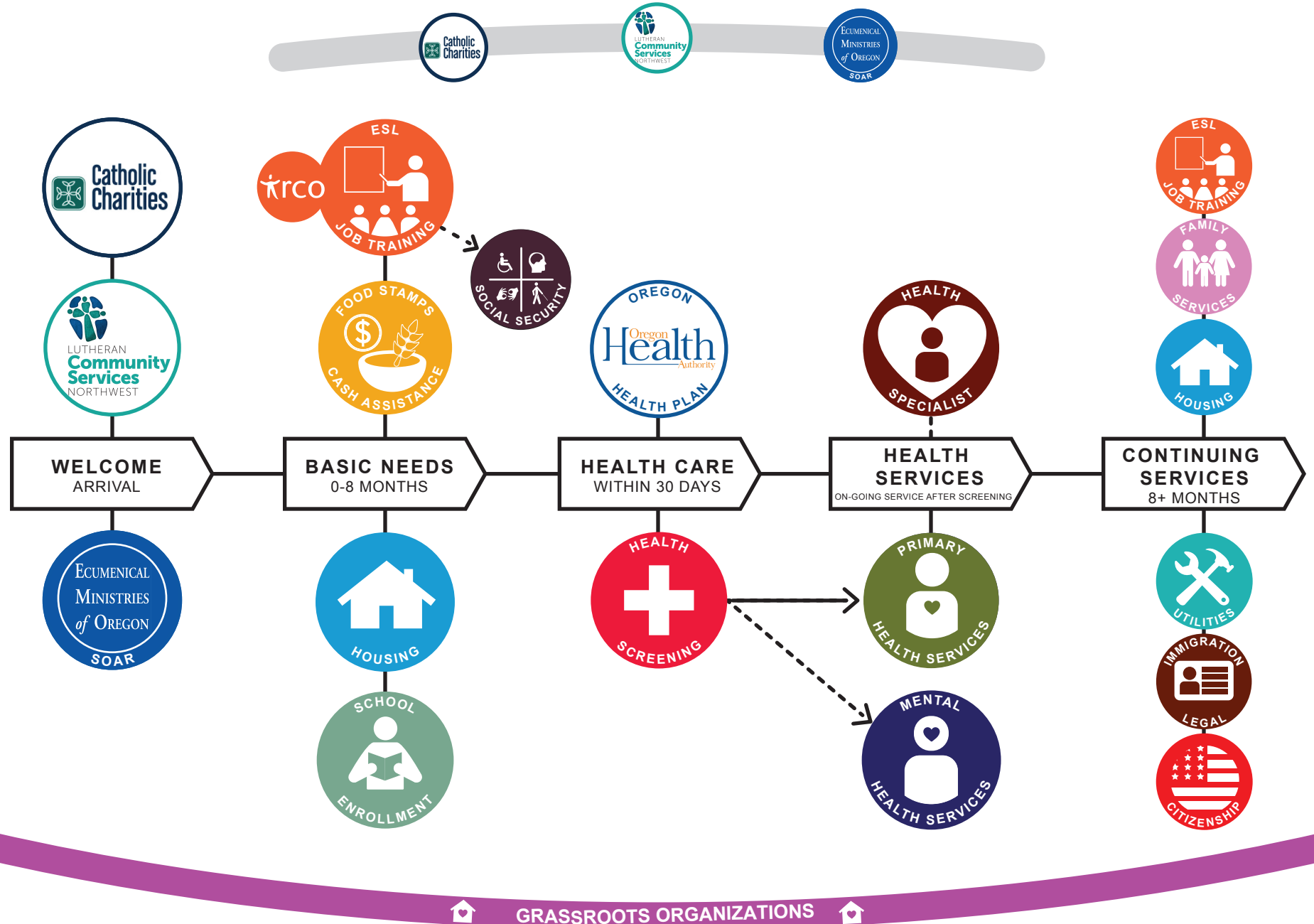


Oregon Welcomes You



Supported by:



**PATHWAYS
TO
WELLNESS**
Integrating Refugee Health and Well-Being



ARRIVAL DAY 1	BASIC NEEDS 0 - 8 MONTHS	HEALTH CARE ON-GOING SERVICE AFTER SCREENING	CONTINUING SERVICES 8+ MONTHS
<div data-bbox="58 164 107 212"></div> <div data-bbox="111 172 321 248"> Portland Airport 7000 NE Airport Way, Portland, OR 97218 </div> <div data-bbox="111 276 363 337"> VOLUNTARY AGENCIES <i>Case management, benefits oversight, and housing.</i> </div> <div data-bbox="58 345 107 394"></div> <div data-bbox="111 345 321 472"> Catholic Charities Services 2740 SE Powell Blvd, Portland, OR 97202 (503) 231-4866 </div> <div data-bbox="58 488 107 537"></div> <div data-bbox="111 488 363 641"> Lutheran Community Services Northwest (LCSNW) 605 SE Cesar E. Chavez Blvd, Portland, OR 97214 (503) 231-7480 </div> <div data-bbox="58 659 107 708"></div> <div data-bbox="111 659 363 786"> Sponsors Organized to Assist Refugees (SOAR) 7931 NE Halsey St., Ste. 314, Portland, OR 97213 (503) 284-3002 </div>	<div data-bbox="394 164 443 212"></div> <div data-bbox="447 172 688 363"> ESL/ JOB TRAINING IRCO <i>English language, vocational training, employment supports, and job placement services</i> 10301 NE Glisan St, Portland, OR 97220 (503) 234-1541 </div> <div data-bbox="394 380 443 428"></div> <div data-bbox="447 391 699 618"> FOOD STAMPS/ CASH ASSISTANCE Department of Human Services <i>Cash Assistance/SNAP - Refugee Branch</i> 4425 NE Broadway St., Portland, OR 97213 (971) 673-5722 </div> <div data-bbox="394 634 443 683"></div> <div data-bbox="447 646 699 886"> SCHOOL ENROLLMENT ORSIPT - School Assistance For Refugee Newcomers (SAFRN) 605 SE Cesar E. Chavez Blvd, Portland, OR 97214 (503) 731-9521 </div> <div data-bbox="394 902 443 951"></div> <div data-bbox="447 914 678 1040"> SOCIAL SECURITY Social Security Office 17925 SE Division St, Portland, OR 97236 (800) 772-1213 </div>	<div data-bbox="728 164 777 212"></div> <div data-bbox="781 172 1050 306"> HEALTH SCREENING Mid County Health Center 12710 SE Division St, Portland, OR 97236 (503) 988-3601 </div> <div data-bbox="728 326 777 375"></div> <div data-bbox="781 334 959 417"> OREGON HEALTH PLAN (800) 966-9075 </div> <div data-bbox="728 433 777 482"></div> <div data-bbox="781 441 1047 669"> PRIMARY CARE SERVICES East County Health Center 600 NE 8th St 3rd Floor Gresham, OR 97030 (503) 988-5558 </div> <div data-bbox="781 695 1050 797"> Mid County Health Center 12710 SE Division St, Portland, OR 97236 (503) 988-3601 </div> <div data-bbox="781 823 1018 951"> Rockwood Community Health Center 2020 SE 182nd Portland, OR 97233 (503) 988-5558 </div> <div data-bbox="781 977 999 1079"> Virginia Garcia 2935 SW Cedar Hills Beaverton, OR 97005 (503) 352-6000 </div> <div data-bbox="1062 164 1110 212"></div> <div data-bbox="1115 172 1331 363"> MENTAL HEALTH SERVICES Asian Health and Service Center 3430 SE Powell Blvd, Portland, OR 97202 (503) 872-8822 </div> <div data-bbox="1115 380 1331 482"> Avel Gordly 621 SW Alder St. #520 Portland, OR 97205 (503) 494-4745 </div> <div data-bbox="1115 498 1331 626"> Cascadia 10373 NE Hancock St # 200 Portland, OR 97220 (503) 253-6754 </div> <div data-bbox="1115 643 1331 794"> Catholic Charities- Family Support and Counseling 2740 SE Powell Blvd, Portland, OR 97202 (503) 238-5196 </div> <div data-bbox="1115 810 1331 938"> Conexiones 3500 NE Martin Luther King Jr. Blvd. Portland, OR 97212 (503) 327-8205 </div> <div data-bbox="1115 954 1331 1130"> LCSNW - Multicultural Counseling Services (MCS) 605 SE Cesar E. Chavez Blvd. Portland, OR 97214 (503) 231-7480 </div> <div data-bbox="1115 1146 1331 1299"> OHSU Intercultural Psychiatric Program (IPP) 2214 Lloyd Center, Portland, OR 97232 (503) 494-4222 </div>	<div data-bbox="1400 164 1449 212"></div> <div data-bbox="1453 172 1703 331"> ESL/JOB TRAINING Vocational Rehabilitation 305 NE 102nd Ave #200, Portland, OR 97220 (971) 673-5858 </div> <div data-bbox="1400 347 1449 396"></div> <div data-bbox="1453 358 1682 544"> FAMILY SERVICES Department of Human Services-Self Sufficiency 1415 SE 122nd Ave Portland, OR 97233 (971) 673-5566 </div> <div data-bbox="1453 560 1656 688"> IRCO Family Services 10301 NE Glisan St, Portland, OR 97220 (503) 234-1541 </div> <div data-bbox="1453 704 1663 855"> Women, Infants and Children (WIC) 131 NE 102nd Ave Bldg #1 Portland, OR 97220 (503) 988-3503 </div> <div data-bbox="1400 872 1449 920"></div> <div data-bbox="1453 883 1692 997"> HOUSING AFC Rental Assistance Hotline (503) 234-2048 </div> <div data-bbox="1453 1013 1705 1115"> Habitat For Humanity 1478 NE Killingsworth St, Portland, OR 97211 (503) 287-9529 </div> <div data-bbox="1453 1131 1705 1234"> Home Forward 135 SW Ash St, Portland, OR 97204 (503) 802-8300 </div> <div data-bbox="1453 1250 1650 1326"> IRCO Africa House Rental Assistance (503) 802-0082 </div> <div data-bbox="1728 164 1776 212"></div> <div data-bbox="1780 172 2051 259"> LEGAL SERVICES <i>Individual consultation, green card and citizenship legal services, citizenship classes.</i> </div> <div data-bbox="1780 266 2022 417"> Catholic Charities Services 2740 SE Powell Blvd., #2 (Floor 3) Portland, OR 97202 (503) 542-2855 </div> <div data-bbox="1780 433 2051 612"> Lutheran Community Services Northwest (LCSNW) 605 SE Cesar E. Chavez Blvd, Portland, OR 97214 (503) 231-7480 (503) 731-9538 </div> <div data-bbox="1780 628 2051 779"> Sponsors Organized to Assist Refugees (SOAR) 7931 NE Halsey St., Ste. 302, Portland, OR 97213 (503) 384-2482 </div> <div data-bbox="1728 795 1776 844"></div> <div data-bbox="1780 807 2022 967"> SOCIAL SECURITY Refugee Disability Benefits of Oregon 1220 SW Morrison St Portland, OR 97205 (971) 270-0755 </div> <div data-bbox="1728 984 1776 1032"></div> <div data-bbox="1780 995 2022 1109"> UTILITY ASSISTANCE AFC Energy Assistance Hotline (503) 235-4932 </div> <div data-bbox="1780 1125 1950 1201"> Africa House Energy Line (503) 234-1959 </div> <div data-bbox="1780 1218 1950 1266"> Impact NW (503) 294-7444 </div> <div data-bbox="1780 1282 2001 1385"> Latino Network 410 NE 18th Ave, Portland, OR 97232 (503) 283-6881 </div>

Supported by:



Revised March 2018 LD
Oregon Family to Family Health Information Center

For additional resources including crisis services: Call 2-1-1