

## ROSEDALE GARDENS PRESBYTERIAN CHURCH (U.S.A.)

9601 Hubbard Avenue

Livonia, Michigan 48150

(734) 422-0494

[www.rosedalegardens.org](http://www.rosedalegardens.org)

[www.facebook.com/rosedale.church](https://www.facebook.com/rosedale.church)

**JANUARY 4, 2026**



*By the loving grace of Jesus Christ working in us, we are a people who practice welcoming relationships and caring service to the glory of God.*

### INCLUSIVITY STATEMENT:

At Rosedale Gardens Presbyterian Church, we strive to be a Christ-like, faithful and inclusive church family. We welcome the full participation of all people of any ability, age, gender, race, ethnicity or sexual orientation. We commit ourselves to following Jesus by cultivating mission, inclusion and community.



**RGPC: The Mission Station**

**\* = CONGREGATION IS INVITED TO STAND, as able**

Large print bulletins and hearing assist devices are available – please see an usher.

*Please sign the Friendship Pad as it is passed to you, noting the names of those who are worshipping around you so you may greet them when the Service has ended.*

***PLEASE TURN OFF*** all cell phones and use this time to quietly prepare for Worship.

**NURSERY (infants and toddlers) – Room 201 (Main Level)**

**PATHWAYS TO WORSHIP & FAITHWORKS**

**(Ages 3 - Grade 5) – Fellowship Hall**

*(Children can be picked up after worship from these locations)*

**CHILDREN'S WORSHIP TIME**

The wise men followed your star in the sky.

**Thank you, Jesus, for being our one true light in the darkness!**

Today we celebrate the wise men who traveled far to worship you!

**We are here to worship you, too!**

The three kings brought you gifts of gold, frankincense, and myrrh.

**Today we bring you the gift of ourselves, Jesus. We love you!**

**THE LORD'S PRAYER...** *Our children will lead us*

**Our Father, who art in heaven, hallowed be Thy name. Thy kingdom come, Thy will be done, on earth as it is in heaven. Give us this day our daily bread, and forgive us our debts, as we forgive our debtors. And lead us not into temptation but deliver us from evil. For Thine is the kingdom and the power and the glory, forever, Amen.**

*(At this time, the children are invited to go to Sunday School.)*

**WELCOME & ANNOUNCEMENTS**

**PRAYERS OF INTERCESSION**

**A SCRIPTURE READING ENCOUNTER Isaiah 60:1-2**

*(O.T. pg. 690)*



**PRELUDE “He Is Born, the Divine Christ Child” by Keith Christopher**

*He is born, the divine Christ child. Play on the oboe and bagpipes merrily.  
He is born, the divine Christ child. Sing we all of the Savior's birth.*

*Through long ages of the past prophets have foretold his coming.  
Through long ages of the past, now the time has come at last.*

*Oh, how lovely, oh how pure is this perfect child of heaven.  
Oh, how lovely, oh how pure, gracious gift of God to men.*

**\*CALL TO WORSHIP**

*Liturgist: Bruce Johnson*

Arise, shine! Jesus is the light of the world!

**The manger-born Savior is still to be found and followed.**

The story continues. Good News abounds!

**He is our hope and joy!**

Arise, shine! Jesus loves you!

**Lord Jesus, you are the light in the darkness!**

**\*HYMN #152 “What Star Is This, with Beams So Bright”**

**\*THE CALL TO CONFESSION**

The cares of this life weigh us down so that we seek escape more than insight,  
and avoidance rather than God’s truth.

**Yet we know that God comes to us, even when we are hiding. God wants to  
hear our story and restore us to life as it was meant to be lived.**

In the light of that Good News, let us come to God in prayer...

**\*PRAYER OF CONFESSION (Unison)**

**Light of the World, you have set your star before us, but we confess that we  
do not always follow it. We are distracted by lesser lights—by busyness,  
fear, pride, and the need to be in control. We wander into shadows of  
resentment, impatience, and quiet disobedience. We know the path you  
show us, yet we choose easier roads.**

**Forgive us, O God.**

**Turn our hearts back toward your light.**

**Guide us again by your grace,  
until our lives reflect the brightness of Christ.**

**Amen.**



## **\*ASSURANCE OF FORGIVENESS**

God's light is present in this world—  
Present in the Christ child, born to lead us out of darkness—  
Present in the star, in all that guides us to love.

**God's light is in the world, and the darkness did not overcome it.  
God's grace is in the world, and our missteps will not overcome it.  
We are loved, we are forgiven. Alleluia! Amen.**

## **\*RESPONSE “This Little Light of Mine”**

*This little light of mine, I'm gonna let it shine.  
This little light of mine, I'm gonna let it shine.  
This little light of mine, I'm gonna let it shine.  
Let it shine, let it shine, let it shine!*

**A SCRIPTURE READING ENCOUNTER Matthew 2:7-12** (N.T. pg. 2)

## **AN OFFERING OF STARS**

### **A WORD ABOUT WORDS**

### **SPECIAL MUSIC “Variations on Twinkle, Twinkle Little Star”**

*by W.A. Mozart*

## **A PRAYER OF ACCEPTANCE**

Creator of light, today as in every day of our lives, we have received a gift from you. Perhaps our star word represents a quality of life or a spiritual value.

**We acknowledge that we do not yet fully understand this gift, but we receive it with thanksgiving. We pray that through these next twelve months your Spirit will enable us to make this gift our very own.  
In Christ’s name we give our grateful praise, Amen.**

**COME AND SEE LOVE** *by 231 Worship*

**A GOSPEL READING ENCOUNTER: Luke 19:1-10** (N.T. pg. 82)

## **SCRIPTURE VERSE OF THE DAY John 8:12**

*Jesus said, “I am the light of the world.*

*Whoever follows me will never walk in darkness, but will have the light of life.”*

## **SERMON**

## **“ENCOUNTER”**

*Pastor Kellie Whitlock*





**ANTHEM “There Shall a Star Come Out of Jacob” by Felix Mendelssohn**

*There shall a star come out of Jacob and a sceptre shall rise out of Israel  
There shall a star come out of Jacob; with might destroying princes and cities  
There shall a star come out of Jacob*

*As bright the star of morning gleams  
So Jesus sheddeth glorious beams of light and consolation  
Thy Word, O Lord, radiance darting, truth imparting, gives salvation  
Thine be praise and adoration*

**OFFERING OF OUR LIVES AND GIFTS**

**AN INVITATION TO GENEROSITY**

**OFFERTORY**

**“Joy Has Dawned”**

by Getty and Townend, arr - Douglas E. Wagner

*Joy has dawned upon the world, promised from creation  
God's salvation now unfurled, hope for ev'ry nation.  
Not with fanfares from above, not with scenes of glory  
But a humble gift of love: Jesus, born of Mary.*

*Sounds of wonder fill the skies with the songs of angels  
As the mighty Prince of life, shelters in a stable.  
Hands that set each star in place, shaped the earth in darkness  
Cling now to a mother's breast, vulnerable and helpless.*

*Shepherds bow before the Lamb, gazing at the glory.  
Gifts of men from distant lands prophesy the story.  
Gold, a king is born today; incense, God is with us  
Myrrh, his death will make a way.  
By his blood he'll win us.*

*During the playing of our Offertory, if you wish to make an offering to the church,  
you may give electronically by texting "rgpc" to 833-245-5153 or using the QR Code  
on the back page of the bulletin, or by placing your offering in the black Offering Box  
located in the Narthex or outside the Chapel.*

**\*DOXOLOGY (Hymn #606)**

*Praise God, from whom all blessings flow;  
Praise Him, all creatures here below;  
Praise Him above ye heavenly host;  
Praise God, Son, and Holy Ghost. Amen.*



**\*PRAYER OF DEDICATION**

**\*HYMN #192 “Lord, the Light of Your Love Is Shining”**

**\*BENEDICTION**

**\*POSTLUDE** “Celebrating the First Noel” *by James Conely*



**SERMON NOTES...**

A large empty rectangular box with a black border, intended for sermon notes.



**HAVE YOU COMPLETED YOUR 2026 PLEDGE YET?**

If you need another form, more are available on the counter in the office, or, for your convenience, you can complete your pledge online by scanning the QR code. Thank you RGPC Family!



# STAR WORD WHEEL 2026



**Want a star word for family & friends?  
Scan the QR code and send them the link!**



**SUNDAY  
JANUARY 4, 2026**

**3 P.M.  
IN THE CHAPEL**

If you're entering this new year carrying pain, uncertain, or struggles that feel too heavy to handle alone, we invite you to this healing prayer service.

*Come and be prayed with -  
for healing, strength, peace & hope.*

# SERVING AND GROWING TOGETHER

**WELCOME – PLEASE FEEL AT HOME HERE!** We're glad you've chosen to set aside this hour to praise God in worship, and are delighted to have you at **Rosedale Gardens Presbyterian Church!**

It is our hope that you will be uplifted spiritually by our worship and that you will join us often.

Please stop by the Welcome Center located in the foyer to receive a Welcome Gift. Ushers and greeters are available for information, large print bulletins or assistance. If you need a hearing assistance device, please go to the Welcome Center. If you are a member of another congregation, please offer our greetings to our brothers and sisters in Christ when you return. If you are not currently part of another church congregation, we hope you will consider making **Rosedale Gardens Presbyterian Church** your church home, simply speak with our pastoral staff.

## UPCOMING DATES OF SPECIAL INTEREST

---

### *JANUARY — FEBRUARY*

Jan. 4	<b>Epiphany/Star Sunday</b> <b>Sunday's Edge Prayer Service</b> (3pm, Chapel)
Jan. 11	<b>Adult Mission Trip Meeting</b> (11:45am, Chapel)
Jan. 16	<b>Chapel Friday</b> (12pm, Library)
Jan. 18	<b>Communion</b>
Jan. 19	<b>Martin Luther King Jr. Day—Church Office is CLOSED</b>
Jan. 21	<b>Session Meeting</b> (7pm, Youth Hall)
Jan. 31	<b>Men's Club Chili Challenge</b> (6pm, Fellowship Hall)
Feb. 1	<b>Baptism</b> <b>New Member Class</b> (11:45am, Library)
	<b>Sunday's Edge Prayer Service</b> (3pm, Chapel)
Feb. 8	<b>New Member Luncheon</b> (11:45am, Youth Hall)
Feb. 15	<b>Communion</b>
Feb. 16	<b>President's Day—Church Office is CLOSED</b>
Feb. 18	<b>Ash Wednesday</b> <b>Communion</b> <b>Session Meeting</b> (7pm, Youth Hall)
Feb. 20	<b>Chapel Friday</b> (12pm, Library)
Feb. 22	<b>Annual Meeting</b>
Feb. 23	<b>Red Cross Blood Drive</b> (1-7pm, Youth Hall)

## SERVING TODAY

---

**Sunday Secretary:** Marilyn Bingham

**Ushers:** Jenn Turko, Bill Fife, Denise Gerger, & Rick Hannah

**Welcome Desk:** Bev Hertenstein

**Online Greeter:** Janette Poe

**Worship Arts:** Jim Davis & Jonathan Roos

**Sound System:** John Mazeppa

**Huddle:** Lois Keefer & Adrienne Floyd

**Coffee Hour:** Membership Committee

**Rosie Drivers:** Brad Beney & Dennis Witte



**MEMBERS IN NEED OF PRAYER:** Dyche Anderson, Megan Barker, Abby Bennett, Linda Blumel, Laurie Carse, Susan Cohl, Judy Coleman, Lois Cummings, Larry Dye, Katherine Dyer, Rose Eickhoff, Mary Ann Falardeau, Debbie Fawkes, Maggie Fleming, Dave Garcia, Jerry Gibbons, Anne Hartsell, Deirdre Hope, Joyce Jewell, Beverly Johnston, Mary Kennedy, Shirley Lande, Cherie Lessig, Charlene Mazeppa, Margot McCormack, Donald McLean, Sadikifu Motiryo, Stafford Nelson, Karen Perry, Jan Prentice, Susan Rinke, Jenny Root, William Sather, Julie Seiter, Ken Stempien, Mason Taylor, Diane Trupiano, Ella Warrick, Macaylah Whitlock, Vicki Wonnacott, Barb Yamazaki, Ed Yopek.



**OUR EXTENDED CIRCLE OF FAMILY AND FRIENDS:** *(This listing will be cleared and renewed on the first Sunday of each month. Names can be added at any time, but if you wish to have someone continued into the following month, please contact the Church Office.)*

- Barb, sister of Valerie Culler
- Cari Czako, sister-in-law of Veronica & Marty Blank
- Katie Dooley, neighbor & friend of Veronica & Marty Blank
- Julie Holguin, friend of Veronica & Marty Blank
- Jean Jones, sister of Janette Poe
- Pat Raymo, friend of Robin Roos
- Tracy Rutter, friend of Robin Roos
- Rev. Chang, PC(USA) missionary to the people of the Philippines
- Those Serving/Who Have Served Our Country in the Military and as First Responders
- Rosedale Military/First Responder/Serviceperson of the Month: Douglas Andridge

## **EACH WEEK WE REMEMBER IN PRAYER**

church member families, thanking God for them, and asking God to bless and guide them. We invite you to keep in your prayers: *the Carlson, Herrick, Lefevre, & Sequin families.*



**We're Looking for Volunteers to  
be Sunday Morning Greeters!**

Please sign up to join the  
team with this QR Code:



## RGPC FAMILIES!

### RGPC KIDS

We'll have some wintery fun together and discover how Jesus will warm our hearts in 2026. Join us for a winter themed morning as we discover the special STAR WORD that will help us become closer to Jesus! Join us for this heart-warming event.



**Save the Date: July 21, 22, 23, 2026**  
**For Vacation Bible School!**

Join us for an out of this world adventure where we'll discover what it means to shine Jesus' light! Kids will explore how Jesus shined hope, love, and joy to the



world—and how they can do the same with his power! We can't wait to blast off with you on this fun, faith-filled adventure! See you this summer!



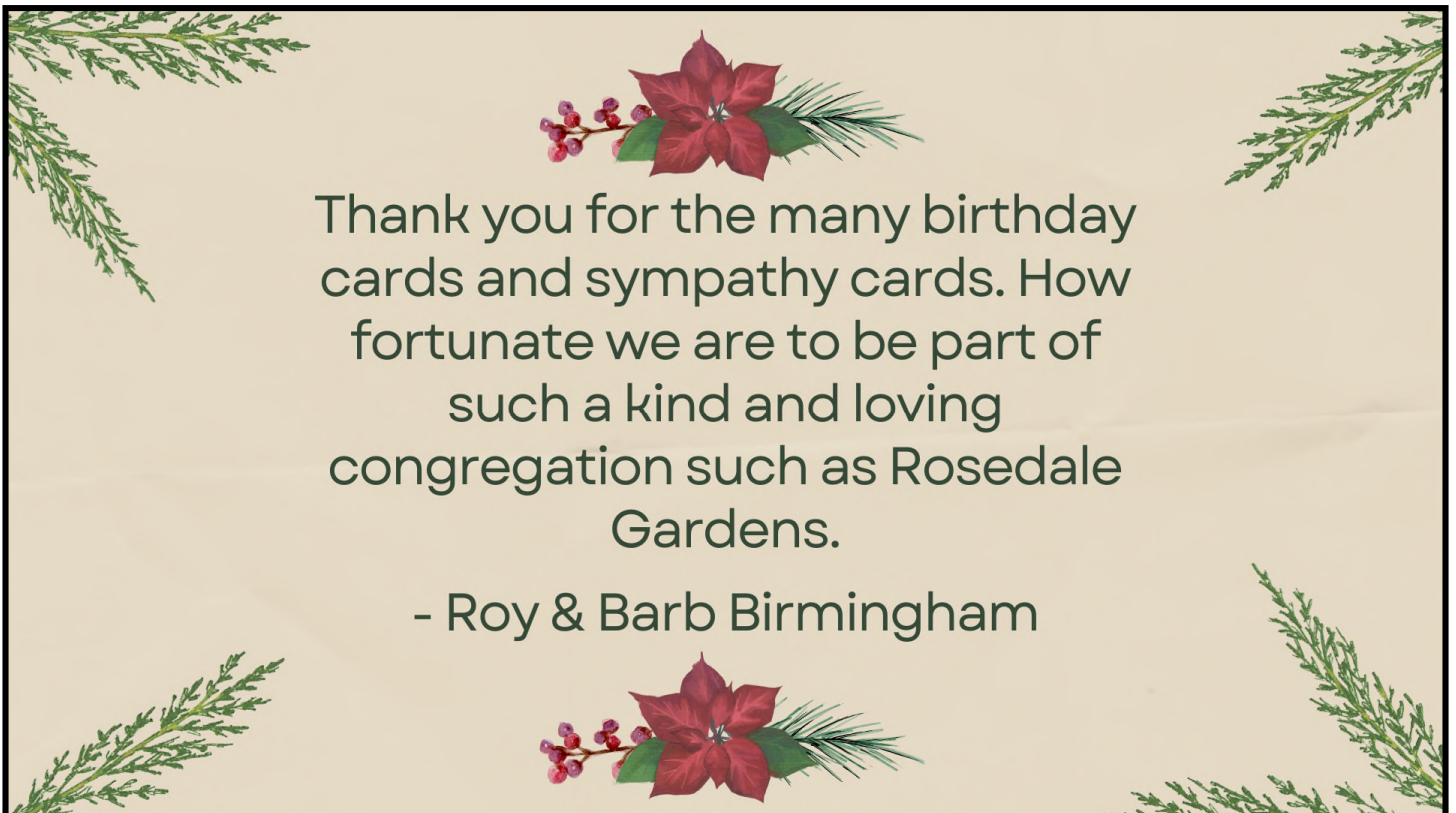
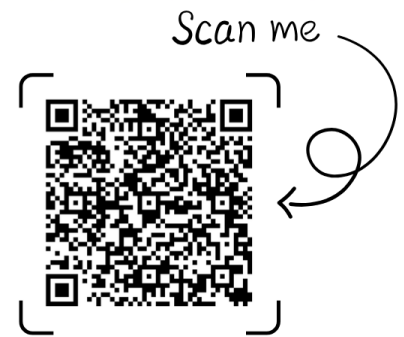
# RGPC FAMILIES!

## Sunday School Registration

A friendly reminder to register your child(ren) for the 2025-2026 Sunday school year.

You can grab a registration form from the table in the Narthex or scan the QR code to register!

FAITHWORKS



Thank you for the many birthday cards and sympathy cards. How fortunate we are to be part of such a kind and loving congregation such as Rosedale Gardens.

- Roy & Barb Birmingham

# YOUTH MINISTRY NEWS

## RGPC Youth Ministry

FOR STUDENTS 6<sup>TH</sup> - 12<sup>TH</sup> GRADE

### Sunday School

JANUARY 4  
FEBRUARY 1  
MARCH 8  
APRIL 19  
MAY 3

Class meets @ 10:30  
in Youth Hall  
Led by Brad Avis &  
Pam Gunderson



HIS CALL. YOUR VOICE. THEIR INVITATION.

### SuperSunday

JANUARY 25  
FEBRUARY 15  
MARCH 22  
APRIL 26

10:30 a.m. - 3 p.m.  
SuperSundays begin in  
the Balcony for worship  
and include lunch, games  
service project and Bible Study!

## Lunch Providers Requested!

Would you be willing to provide the Youth Group lunch once a month? Looking for willing people to provide lunch for approximately 15-18 teens and their adult leaders. Vegetarian options requested.

Please see Pastor Kate! Upcoming Dates:

**January 25**

**February 15**

**March 22**

**April 26**



Department of Defense

# Work-Life Programs

## Health & Wellness



January 2026



### January: Mental Well-being Month

As we step into a new year, consider ways to prioritize the importance of mental well-being. January is recognized as Mental Well-being Month, a time dedicated to raising awareness about mental health issues, sharing resources to reduce stigma surrounding mental health topics, and encouraging proactive steps toward maintaining mental well-being. Prioritizing mental health is vital for leading a fulfilling life which can lead to healthier communities. Remember, every effort counts in creating a healthier, happier community.

### Practical Tips for Enhancing Mental Well-being

1. Self-Care: Engaging in simple practices such as gratitude journaling, connecting with nature, and creative hobbies can significantly enhance mental well-being.
2. Set Realistic Goals: As you embark on your New Year's resolutions, ensure they are achievable and time bound. Setting realistic goals can reduce feelings of overwhelm and promote a sense of accomplishment.
3. Practice Mindfulness: Engage in mindfulness practices such as meditation or deep breathing exercises. These techniques can help reduce stress and improve emotional regulation.
4. Stay Active: Regular physical activity and joyful movement is beneficial for both physical and mental health. Aim for at least 30 minutes of rigorous activity most days to boost your mood and energy levels.
5. Get Enough Sleep: Sleep is vital for mental health. Prioritize a consistent sleep schedule and create a relaxing bedtime routine to improve sleep quality.
6. Limit Screen Time: Reducing the amount of time spent on screens, especially on social media, can help decrease stress and anxiety levels.
7. Professional Support: Seeking help from mental health professionals is a sign of strength and self-awareness.

### Additional Resources

- American Psychological Association (APA), [APA commemorates Mental Health Awareness Month with series of special activities](https://www.apa.org/news/press/releases/2018/04/mental-health-month),  
<https://www.apa.org/news/press/releases/2018/04/mental-health-month>
- Mental Health Center- [21 Ways to Celebrate Mental Wellness Month](https://www.mentalhealthctr.com/21-ways-to-celebrate-mental-wellness-month/),  
<https://www.mentalhealthctr.com/21-ways-to-celebrate-mental-wellness-month/>

For additional information, please email [dodhra.mc-alex.dcpas.mbx.dod-worklife@mail.mil](mailto:dodhra.mc-alex.dcpas.mbx.dod-worklife@mail.mil)



# 2026 PDA ADULT MISSION TRIP!



RGPC Will be hosting an adult mission trip to California to continue working with the Tiny Pine Foundation!

April 19-25, 2026

Final commitment meeting will be held on Sunday, January 11 in the Chapel.

For more information, contact Pastor Kate!



## TWIN BED SHEETS DRIVE



**NO KID SLEEPS  
ON THE FLOOR  
IN OUR TOWN!**

**THE YOUTH GROUP HAVE BUILT TWIN SIZE BEDS, OUR RGPC KIDS HAVE COLLECTED PILLOWS, NOW THE CHURCH & SOCIETY COMMITTEE WOULD LIKE TO COLLECT SHEETS, COMFORTERS, AND PILLOW CASES FOR THOSE BEDS.**

**ON SUNDAYS, JANUARY 11<sup>TH</sup>, JANUARY 18<sup>TH</sup> AND JANUARY 25<sup>TH</sup>, CHURCH & SOCIETY WILL BE COLLECTING NEW SHEETS, SHEET SETS, COMFORTERS, AND PILLOW CASES FOR TWIN SIZE BEDS OUTSIDE THE CHAPEL NARTHEX. SHEETS AND SHEET SETS CAN BE WHITE OR OF ANY COLOR, OR OF ACTION FIGURES, SUCH AS SUPER HEROES, DISNEY, ETC. ALL BEDDING COLLECTED WILL BE DONATED TO THE SLEEP IN HEAVENLY PEACE ORGANIZATION.**



# Winter Bible Study

## The Gospel of John

7 p.m. Mondays, beginning January 26<sup>th</sup>  
In-person & Zoom options available!

Classes meet in the Library or Youth Hall

# MEN'S CLUB CHILI COOK-OFF

**SATURDAY, JANUARY 31<sup>ST</sup>**  
**6PM - FELLOWSHIP HALL**

**THE SIGN UP SHEET IS ON THE CHURCH BULLETIN BOARD.**  
**COME & VOTE FOR YOUR FAVORITE RECIPE!**



SCAN ME



# Welcome to Church

## Join our next New Member Class!

New Member Class: Sunday, February 1<sup>st</sup> at 11:45 A.M. in the Library

Session New Member Luncheon: Sunday, February 8<sup>th</sup> at 11:45 A.M. in Youth Hall

New Members Welcomed During Worship: Sunday, February 15<sup>th</sup> at 10:30 A.M. in the Sanctuary




Sign up in the church office or with the QR code!



**Like Rosedale?**

Then please go to "Google Reviews" and share your thoughts! The more reviews we have, the more likely people are to find us and come check us out! Scan this QR code to take you to our "Google Review" page!

SCAN ME!

★★★★★

**Chapel Friday**

We will now hold Chapel Friday on the 3rd Friday of each month.

We hope you will join us!



**WELCOME back ROSIE, THE BUS!**



**ROSIE IS NOW RUNNING ON SUNDAYS!**  
Please call Morgan in the Office at (734) 422-0494 if you need a ride!

**OFF THE RAILS PODCAST**  
CHASING FAITH IN A POST-CHRISTIAN CULTURE

**THANKFUL FOR WHAT?**



CHECK OUT OUR LATEST EPISODE! LISTEN HERE!




**YOGA CLASSES AT RGPC**



*Wednesday Evenings*  
5:30-6:30 - Room 109 (the Scout Room)

OUR FOCUS WILL BE ON CHAIR YOGA, BUT YOU MAY BRING BLOCKS AND MATS IF DESIRED. SESSIONS ARE DESIGNED FOR ALL ABILITIES

**JOIN OUR EXERCISE CLASSES!**

Tuesdays: 6pm on FB Live  
Wednesdays at RGPC:  
2pm - Exercise for Seniors  
7pm - Exercise for Everyone



## JOIN US IN HONORING OUR VETERAN OF THE MONTH

### We are recognizing Douglas Andridge, Seaman, U.S. Navy Reserve

Doug was inspired to join the Armed Forces by his Dad and Uncle Bob, who served as officers during WW2 and received Bronze Stars. His Uncle Wells, who was a career Navy person, peaked Doug's interest in the Navy. He grew up visiting all the different ships that his Uncle Wells served on and he thought it was very interesting. Doug decided to join the Navy when he was a junior in high school after learning of The Navy Reserve program that required 1 year of weekly drills, then 2 years of active service, followed by 2 more years of weekly drills.

Doug began his active service at Great Lakes Naval Training Center in Illinois for 8 weeks of basic training. On his second day of training, he received multiple vaccinations and was then put through 2 hours of PT and could barely lift his arms the next day. Doug drilled with ancient rifles which had no operating parts and were falling apart. During boot camp, Doug received various skill tests, one of which was typing, and he tested at 30 wpm. Because of these test results, he was assigned to office jobs instead of the physical brunt work like swabbing the decks or hanging over the side of the ship to scrape off paint.

Doug's first assignment was in Washington D.C. working in a security section of what was called the "gun factory." After clearing security protocol, he was then assigned to the personnel section of the naval base in Anacostia, MD.

Doug's next and favorite assignment was when he was a member of the payroll department aboard the aircraft carrier USS Forrestal (CVA-59), which was stationed in the Mediterranean Sea at that time. The payroll department was responsible for paying all shipboard crew and the "cag" (carrier air crew) twice a month. During this time, everyone was paid in cash.

On Doug's first day out to sea, he went topside to watch air ops and was overwhelmed and impressed by the jet engines running, the ballet of the air crew readying the planes for takeoff, and the planes being shot off the deck of the ship. The air crew's job was to get all the planes off the ship as quickly as possible, then to bring them all back onboard safely using tail hooks to catch the plane, jerking the planes to a halt while landing at 120 mph on a ship going 35 knots. Then the deck crew's job was to get the landed planes out of the way as quickly as possible so the next plane could land.

While on the ship, Doug had the opportunity to spend Liberty in Naples, Rome, and Pisa, Italy. During his 3 day tour in Rome, he visited the Vatican, saw the Sistine Chapel, and even had an audience with the Pope. He had no idea how venerated the Pope was to Catholics – it was like the Pope was a rock star in front of thousands of people screaming "Viva Papa" with tears streaming down their cheeks.

After Doug's tour with the carrier, he was assigned to Little Creek Amphib Base in Norfolk, VA. During his time there, Doug found it interesting to watch as the SEALs (frogmen) were being trained during Hell Week.

Doug was blessed to have served during a time of relative peace after the Korean War and before the Vietnam War. He enjoyed his time in the service and would recommend that all young people consider serving. Doug was released from active duty in September 1959 and received his honorable discharge on October 10<sup>th</sup>, 1962. After active duty, Doug returned to Lansing and attended Michigan State University for 1 year. In 1962, he married his wife, Martha, and moved to the Detroit area where he went to work in the architectural hardware industry until he retired in 2006.

We at Rosedale Gardens would like to recognize and honor Douglas Andridge's contribution to the safety and security of this great nation. We thank him for his dedicated and honorable service. Well done, good and faithful servant.



## THIS WEEK'S CALENDAR

### SUNDAY, 1/4 EPIPHANY / STAR SUNDAY

9:30 A.M. Chancel Choir Rehearsal – Sanctuary  
 10:30 Worship Service – Sanctuary  
 10:30 Sunday School – Fellowship Hall  
 10:30 Youth Sunday School – Youth Hall  
 3:00 P.M. Sunday's Edge Prayer Service – Sanctuary

### MONDAY, 1/5

*No Church Activities Scheduled*

### TUESDAY, 1/6

8:00 A.M. AA – Youth Hall  
 10:00 Staff Meeting – Library  
 6:00 P.M. Scouts #270 Committee Meeting – Scout Room  
 6:00 Faith & Fitness with Dave – FB Live  
 6:30 ORGHA Meeting – Room 202  
 7:00 Take 5 – Chapel  
 7:00 Deacons Meeting – Youth Hall  
 7:00 Boy Scouts #270 – Scout Room

### WEDNESDAY, 1/7

10:00 A.M. Prayer Group – Library  
 2:00 P.M. Faith & Fitness with Dave – Scout Room  
 5:30 Yoga Class – Scout Room  
 7:00 Take 5 – Chapel  
 7:00 C&S Meeting – Room 202  
 7:00 House Meeting – Library  
 7:00 Faith & Fitness with Dave – Scout Room

### THURSDAY, 1/8

8:00 A.M. AA – Youth Hall  
 6:00 P.M. Chancel Choir Rehearsal – Sanctuary  
 6:00 Cub Scouts #270 – Scout Room  
 7:30 Bell Choir Rehearsal – Sanctuary

### FRIDAY, 1/9

*No Church Activities Scheduled*

### SATURDAY, 1/10

*No Church Activities Scheduled*

### SUNDAY, 1/11

9:30 A.M. Chancel Choir Rehearsal – Sanctuary  
 10:30 Worship Service – Sanctuary  
 10:30 Sunday School – Fellowship Hall  
 11:30 Adult Mission Trip Meeting – Chapel  
 12:00 P.M. Stephen Ministry Super. Meeting – Library  
 12:00 Chime Choir Rehearsal – Sanctuary

### MONDAY, 1/12

*No Church Activities Scheduled*

## CHAPEL FRIDAY SCHEDULE

Friday, January 16<sup>th</sup> we will hold Chapel Friday in the LIBRARY from 12-1:00 p.m. Join us for a service of prayer, scripture, communion, and reflection. All are welcome!



### CELEBRATING A MILESTONE ANNIVERSARY THIS YEAR?

*Please let the office know! We would like to acknowledge those who have been married 50 years or longer.*



### ARE YOU CELEBRATING A BIRTHDAY THIS MONTH?

Please prayerfully consider supporting our Endowment Fund by giving one dollar for each year of your age as a celebration of your life and “giving back” for the blessing of life. This week, we would like to acknowledge **Mr. & Mrs. Michael Olson**, whose love for this congregation was expressed through a gift to The RGPC Endowment Fund. The generosity of these individuals has left a permanent gift to us that will continue to grow and bear the fruit of their faith not only now, but forevermore!



## JANUARY BIRTHDAYS

- 2 Beverly Hertenstein, Frederick Vale
- 3 Valerie Rzepka
- 5 Lacey Miller, Matthew Ward
- 6 Marc Whitlock
- 8 Ryleigh Belsky, Diane Trupiano
- 9 Kathy Benton, Lily O'Connor
- 10 Jamie Burkitt
- 11 Ella Main
- 13 Abigail Bennett, Rick Hannah
- 14 Debbie Coxon
- 15 Samantha Hughes, Amanda Laycock
- 17 Dina Michell
- 18 Charlotte Rosati, Layla Stage
- 20 Terry Deming
- 22 Sam Beney
- 23 Jeff King, **Doris Sands**
- 24 Marilyn Jackson
- 28 Dakota Roos
- 29 Karen Hannah, Breanna Kooienga
- 30 Kasey Cleland, Sydney Cleland, Art Cole, Judy Johnston, Elizabeth Narvaez, Robin Roos, Ella Warrick

\* ***BOLDED text indicates 90+ birthdays***



# HAPPY BIRTHDAY!

### JOIN OUR MANY FACEBOOK GROUPS!

Go to the Rosedale Facebook page,  
under "more," click on "groups"  
and request to join!

"FAITH & FITNESS  
WITH DAVE"

"BETTER TOGETHER"

"PRAYERS FOR POSSIBLE"

"MILITARY, FIRST  
RESPONDERS AND FAMILIES"

"SELF LOVE, SELF CARE"

"GET ROOTED WITH RGPC"

**Like Us on Facebook  
and Follow Us on  
Twitter and Instagram**



**Our Wireless Network!**

**RosedaleWifi**

**Password is Ourchurch**

(please note that it is a zero  
and not the letter "O")

CCLI# 1636329  
CVLI# 505452681



**ELECTRONIC GIVING AT RGPC! Simply use the QR code at right to go directly to PushPay or text “rgpc” to 833-245-5153** (you’ll be sent a message to access our PushPay page) where you can use your bank account, debit card or credit card to securely give to Rosedale Gardens Presbyterian Church. You can make a one-time gift or set up recurring gifts. If you prefer to use your computer, please visit [www.pushpay.com/pay/rosedalegardens](http://www.pushpay.com/pay/rosedalegardens) where you can use the same options to give to RGPC. The Pushpay app is also available free from the Apple and Google stores.



## OUR STAFF TEAM

### MINISTRY

**Kellie A. Whitlock** – Pastor; [kwhitlock@rosedalegardens.org](mailto:kwhitlock@rosedalegardens.org).....ext. 118  
**Kate Mackie** – Associate Pastor and Director of Youth Ministries;  
[kmackie@rosedalegardens.org](mailto:kmackie@rosedalegardens.org) .....ext. 112  
**Lisa Adams** – Director of Children’s and Family Ministries;  
[ladams@rosedalegardens.org](mailto:ladams@rosedalegardens.org); .....ext. 114  
**Brad Avis** – Youth Ministries Coordinator; [bavis1037@gmail.com](mailto:bavis1037@gmail.com)..... 734-716-6247  
**Pam Johnson** – Co-Director of Congregational Care; [pjohnson@rosedalegardens.org](mailto:pjohnson@rosedalegardens.org). 734-658-6220  
**Doug Propst** – Co-Director of Congregational Care; [dpropst@rosedalegardens.org](mailto:dpropst@rosedalegardens.org) ..... 734-742-6544

### VOLUNTEER STAFF DIRECTORS

**Kelly Bruce** – Co-Director, Social Media Ministry; [kelly2726@sbcglobal.net](mailto:kelly2726@sbcglobal.net)  
**Dave Laycock** (Sergeant Major, US Army - retired) – Director, Military & First Responders Ministry; [dlaycock@rosedalegardens.org](mailto:dlaycock@rosedalegardens.org) ..... 734-765-5595  
**Lorraine Paffenroth** – Director, Stephen Ministries;  
[stephenministry@rosedalegardens.org](mailto:stephenministry@rosedalegardens.org) ..... 734-455-8213  
**Dakota Roos** – Co-Director, Social Media Ministry; [sunflowerproductions1@gmail.com](mailto:sunflowerproductions1@gmail.com)

### MUSIC

**Jason Elstone** – Co-Director, Adult Bells  
**Pam Gunderson** – Co-Director, Adult Bells  
**Sandra Main-Niemisto** – Coordinator of Music/Organist/Accompanist;  
[sandramain21@gmail.com](mailto:sandramain21@gmail.com).....ext. 115

### ADMINISTRATIVE

**Brian Grace** – Church Maintenance/Caretaker  
**Gretchen Hocking** – Kitchen Coordinator  
**Kim Lubig** – Financial Secretary; [klubig@rosedalegardens.org](mailto:klubig@rosedalegardens.org).....ext. 111  
**Kathy Marzolf** – Wedding Coordinator  
**Chloe St. John** – Nursery Staff  
**Julie Timmerman** – Nursery Staff  
**Morgan Tressler** – Administrative Coordinator; [officergpc@yahoo.com](mailto:officergpc@yahoo.com) .....ext. 110  
**Office Hours: Monday - Friday from 8 AM - 4 PM**



### INCLUSIVITY STATEMENT:

At Rosedale Gardens Presbyterian Church, we strive to be a Christ-like, faithful and inclusive church family. We welcome the full participation of all people of any ability, age, gender, race, ethnicity or sexual orientation. We commit ourselves to following Jesus by cultivating mission, inclusion and community