



**Jewish Family Service  
of Greater Dallas**

*Special Needs Partnership*



# **SPECIAL NEEDS RESOURCE GUIDE**

**Compiled by the Jewish Family Service of  
Greater Dallas Special Needs Partnership**

# INTRODUCTION TO THE SPECIAL NEEDS PARTNERSHIP

Our goal at Jewish Family Service is to help special needs children and families reach their highest potential socially, emotionally, behaviorally and intellectually. To fulfill this goal our approach is to involve and support family, friends and community resources. Our services include:

- Early Childhood and Student Specialists
- Play Therapy
- Animal-Assisted Therapy
- Comprehensive Assessment
- Speech-Language Assessments and Therapy
- Occupational Therapy
- Social Skills Groups
- School Mental-Health Services
- Psychiatry Services

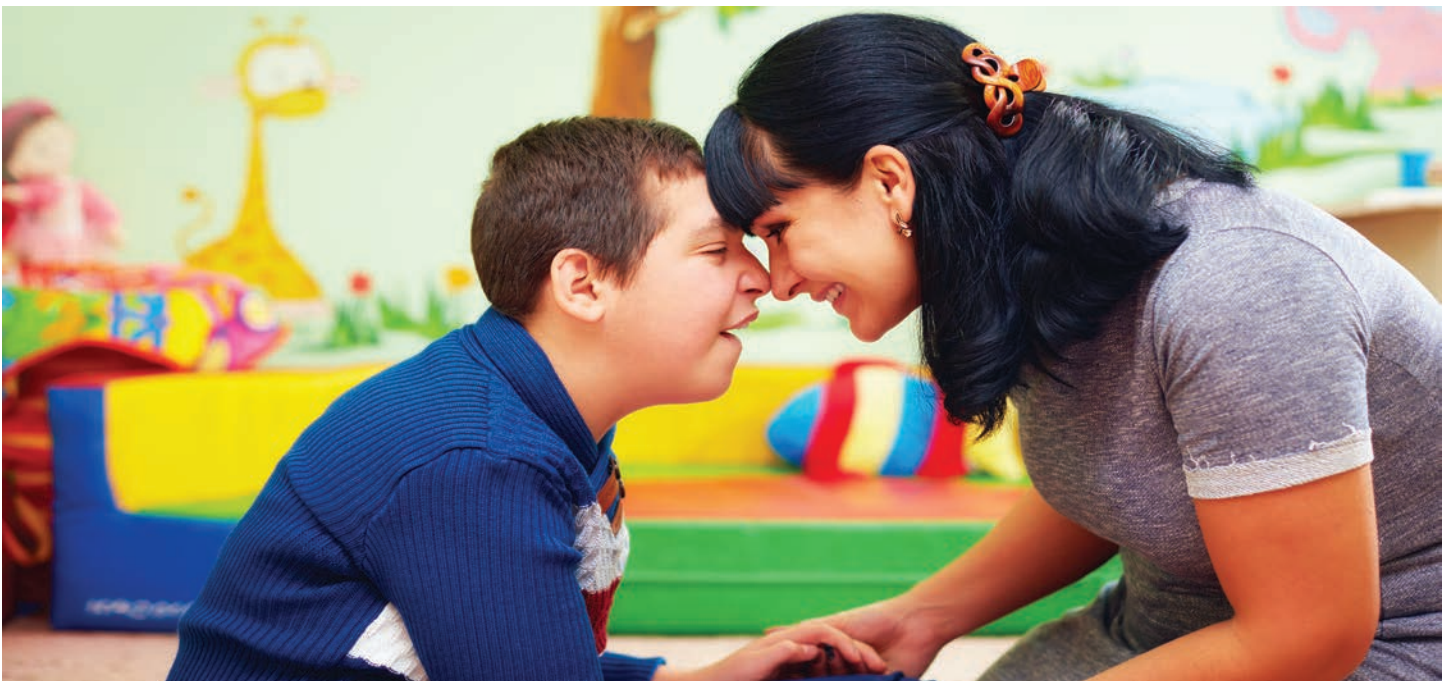
For more information about our Special Needs Resources or if you're not sure of what kind of help your child might need, call (972) 437-9950 x340 or visit <http://bit.ly/JFSSpecialNeeds>.

If you or a loved one has special needs and are seeking additional support, we first recommend that you research the services offered by the Jewish Family Service of Greater Dallas Special Needs Partnership. The partnership contains the following organizations:

[Aaron Family Jewish Community Center](#)  
[Adat Chaverim](#)  
[Akiba-Yavneh Academy of Dallas](#)  
[Ann and Nate Levine Academy](#)  
[Center for Jewish Education](#)  
[Community Homes for Adults, Inc. \(CHAI\)](#)  
[Congregation Anshai Torah](#)  
[Congregation Beth Torah](#)

[Congregation Shaare Tefilla](#)  
[Congregation Shearith Israel](#)  
[Friendship Circle](#)  
[Mesorah High School](#)  
[Temple Emanu-El](#)  
[Temple Shalom](#)  
[Torah Day School of Dallas](#)

Please note that the following resource guide is a compilation of our own research and is not an endorsement of any particular organization. This list is non-exhaustive and will continue to be updated as more resources come to our attention.





# TABLE OF CONTENTS

Schools.....1

Day Habilitation Programs.....4

Housing Options.....6

Social Skills Groups.....7

Specialty Programs.....8

Specialty Treatments.....10

Alternative Therapies.....12

Parent and Guardian Support Groups.....14

Texas Resources.....15

National Organizations.....17



# SCHOOLS

## **Bending Oaks High School (Grades 9-12)**

11884 Greenville Avenue, #120, Dallas, TX 75243

[www.BOHS.com](http://www.BOHS.com) (972) 669-0000

Helps students with School Anxiety, Autism Spectrum Differences, Memory Differences, Dyslexia, Dysgraphia, ADD/ADHD, and other learning differences.

## **Bridge Builder Academy (Grades K-12)**

1221 West Campbell Road, Richardson, TX 75080

[www.bridgebuilderacademy.com](http://www.bridgebuilderacademy.com) (972) 516-8844

One on one instruction with certified teachers instilling a love of learning for students who learn differently. Learning Differences including: ASD; Dyslexia, Dysgraphia and Dyscalculia; Auditory Processing Disorder; Language Processing Disorder; Memory Retention Problems; Visual Processing Disorders and many other learning challenges.

## **Bryan's House (Birth – Age 21)**

3610 Pipestone Road, Dallas, TX 75212

[www.bryanshouse.org](http://www.bryanshouse.org) (214) 559-3946

Through medically-managed child care, a nationally recognized Early Childhood Education program, after-school and summer programs with access to individualized therapies, Bryan's House provides services, education, case management for both children with complex medical conditions and their families.

## **Chase's Place (All ages)**

320 Custer Road, Richardson, TX 75080

[www.chasesplace.org](http://www.chasesplace.org) (972) 243-2676

Chase's Place has a 2:1 student/teacher ratio. Programs are individualized for each student and include Speech Therapy, Occupational Therapy, and Recreational Therapy, while also focusing on social skills, self-help skills, functional living skills, and community skills. Chase's Place also accepts students with severe behavioral problems, students who are nonverbal, and students who are not yet toilet trained. Chase's Place accepts students with all types of diagnoses including Autism, Traumatic Brain Injuries, Cerebral Palsy, Down Syndrome and many other childhood disorders.

## **Child Study Center School (Preschool – 8th grade)**

1300 West Lancaster Avenue, Ft. Worth, TX 76102

[www.cscfw.org](http://www.cscfw.org) (817) 390-2831

Child Study Center at Cook Children's (CSC) also known as the Jane Justin School provides children with complex developmental and behavioral disabilities the highest quality diagnosis, treatment, and education, to help them achieve their full potential. Developmental and behavioral challenges are frequently multidimensional. "At Child Study Center, not only do we understand that, we embrace it."

## **Dallas Academy (Grades K-12)**

950 Tiffany Way, Dallas, TX 75218

[www.Dallas-Academy.com](http://www.Dallas-Academy.com) (214) 324-1481

Structured, multisensory program for students with diagnosed learning disabilities, which may include dyslexia, dysgraphia, dyscalculia, ADD/ADHD, ASD and memory and processing disorders.

## **Dallas Day School (Ages 6 weeks-6 years)**

5442 La Sierra Drive, Dallas, TX 75231

[www.dallaservices.org/dallas-day-school](http://www.dallaservices.org/dallas-day-school) (214) 828-9900

Dallas Day School is an inclusive, early education program (infant through pre-K) that provides an opportunity for children with and without special needs to develop, learn and grow together.

## **Dallas Learning Center (Middle and High School)**

1021 Newberry Drive, Richardson, TX 75080

[www.dallaslearningcenter.com](http://www.dallaslearningcenter.com) (972) 231-3723

Individualized middle school (6th-8th) and high school (9th-12th) programs for all students, including additional programs designed to meet the needs of students with learning differences, anxiety issues, and credit deficiencies, as well as students on the autism spectrum.

**Fairfield School and Diagnostic Assessment Center (Grades 1-12)**

16150 Preston Road, Dallas, TX 75248

[www.fairhill.org](http://www.fairhill.org) (972) 233-1026

School for children with above-average intelligence with learning disabilities.

**Great Lakes Academy (Grades K-12)**

6000 Custer Road, Bldg. 7, Plano, TX 75023

[www.greatlakesacademy.com](http://www.greatlakesacademy.com) (972) 517-7498

School for students with average and above-average intelligence, diagnosed with various learning differences, Asperger's Syndrome, ADD/ADHD, learning differences like dyslexia, dysgraphia, and/or processing disorders, Sensory Integration Disorder, OCD, anxiety disorders and depression, low self-confidence.

**Happy Hands Learning**

[www.happyhandslearning.com](http://www.happyhandslearning.com) (972) 853-1175

Happy Hands provides inclusive learning and social opportunities for children with disabilities. Their programs include children with typical abilities to help teach functional, social and life skills to children with disabilities.

**Hillier School (Grades 1-8)**

3821 University Blvd., Dallas, TX 75205

[www.hillierschool.org](http://www.hillierschool.org) (214) 525-6600

Focus on dyslexia and other related language learning differences.

**Hyer Elementary School**

3920 Caruth Blvd, Dallas, TX 75225

[www.hyer.hpsd.org](http://www.hyer.hpsd.org) (214) 780-3300

Hyer Elementary, with an unyielding commitment to excellence, will provide an exceptional academic program that recognizes the unique potential of each student.

**Independent Steps**

[www.independentsteps.com](http://www.independentsteps.com) (469) 600-4336

Independent Steps provides rehabilitation services in DFW for children and adults with cerebral palsy, multiple sclerosis, Parkinson's disease, brain injury, or post-stroke conditions, specializing in the Conductive Education methodology, which aims at rebuilding the mental processes and cognitive skills needed to overcome basic challenges such as learning to roll, crawl, sit, stand, walk, eat, write and become toilet-trained.

**It's A Sensory World**

13617 Neutron Road, Farmers Branch, TX 75244

[www.itsasensoryworlds.org](http://www.itsasensoryworlds.org) (972) 239-8100

Learning center for children with special needs.

**June Shelton School and Evaluation Center (Grades preschool -12)**

17301 Preston Road, Dallas, TX

[www.Shelton.org](http://www.Shelton.org) (972) 774-1772

Special education school specializing in learning differences.

**The Learning Center of North Texas**

[www.tlcnt.org](http://www.tlcnt.org) (817) 336-0808

TLC offers affordable, accessible and practical resources and services to people with learning disabilities. They offer services to help kids develop study practices and strategies to overcome their individual learning challenges.

**Luke Waites Child Center for Dyslexia at Texas Scottish Rite Hospital (Ages 5-14)**

2222 Welborn Street, Dallas, TX 75219

[www.tsrhc.org](http://www.tsrhc.org) (214) 559-7477

Diagnostic testing and educational programs for dyslexia.

**Marie Huie Special Education Center**

[www.huie.cfbisd.edu](http://www.huie.cfbisd.edu) (972) 968-5800

Mission to empower scholars to acquire life-long knowledge, skills, and values to prepare them to compete in the world marketplace while contributing to their community.

**Oak Hill Academy (Preschool – high school)**

9407 Midway Road, Dallas, TX

(214) 353-8804

Oak Hill Academy is dedicated to providing customized academic and social-emotional programs not found in traditional learning environments. From preschool through high school, they offer an individualized curriculum with a whole-child approach, preparing students for life after graduation.

**Notre Dame School (Ages 8 - 22)**

2018 Allen Street, Dallas, TX 75204

[www.notredameschool.org](http://www.notredameschool.org) (214) 720-3911

Private school serving children with disabilities.

**Preston Hollow Presbyterian School (Preschool - 6th grade)**

9800 Preston Road, Dallas, TX

[www.phps.org](http://www.phps.org) (214) 368-3886

PHPS provides a nurturing, highly personalized school environment with multi-sensory learning that cherishes and supports qualified students with learning differences while challenging them to achieve their full potential. They are committed to facilitating students' return to mainstream education equipped with strategies for future learning experiences.

**Rise School of Dallas**

6000 Preston Road, Dallas, TX

(214) 373-7473

The Ashford Rise School of Dallas provides the highest quality of early education services to children ages six months to six years with and without disabilities in an inclusive environment. Rise delivers comprehensive education, intervention and therapy to our students during their formative years. Master's level educators and on-staff speech, occupational, physical, and music therapists help us to meet each student's individual needs, resulting in a tailored educational and social experience for each child.

**Vanguard Preparatory School**

4240 Sigma Rd, Dallas, TX 75244

[www.vanguardprepschool.com](http://www.vanguardprepschool.com) (972) 404-1616

The Vanguard Preparatory School serves children and families who, for different, often complex reasons, are not well served by traditional public and private schools.

**The Winston School**

5707 Royal Lane, Dallas, Texas

[www.winston-school.org](http://www.winston-school.org) (214) 691-6950

The Winston School is a small college preparatory school designed to maximize the potential of bright students who learn differently.



Photo taken from Bridge Builder Academy website



# DAY HABILITATION PROGRAMS

## **The ARC of Dallas**

[www.arcdallas.org](http://www.arcdallas.org) (214) 634-9810

The Dallas Chapter of ARC serves as a voice for people with disabilities and their families in the area of workforce and educational rights. They seek to empower people with developmental and intellectual disabilities in order to improve the quality of their life.

## **Berry Family Services**

4702 Rowlett Road, Rowlett, TX 75088

[www.berryfamilyservices.com](http://www.berryfamilyservices.com) (972) 412-4707

Berry Family Services is an HCS (Home and Community based service), TXML (Texas Home Living), and GR (General Revenue) provider that serves individuals with Mental Retardation. Berry Family Services is owned and operated by the Berry Family whose objective is to provide quality services to the "whole" person with disabilities and their family.

## **College Living Experience (CLE)**

[www.experienceCLE.com](http://www.experienceCLE.com)

Austin Campus: (512) 850-7445

College Living Experience (CLE) is the premier college program for special needs students, facilitating independent living for students with learning disabilities, ADD/ADHD, Asperger's Syndrome, autism and nonverbal learning disorders. CLE programs are located around the country, in Texas, Florida, Colorado, Washington DC, Illinois and California. Situated near major college and vocational programs, CLE programs facilitate a transition to college and independent adulthood in a supportive, structured environment that emphasizes the development of academic, independent living and social skills.

## **Daybreak, Inc.**

3901 N. Dallas Ave, Lancaster, TX 75134

(972) 224-0354

Operates residential programs serving adults with mental retardation and offers vocational, personal/social and recreational services. Located in the Lancaster, DeSoto, Duncanville area.

## **Educare - North Texas Office**

8925 Sterling Dr, Suite 250, Irving, TX 75063

[www.rescare.com](http://www.rescare.com) (972) 929-5000

Private corporation that provides services for people with developmental disabilities. Specializes in community based residential programs, In-Home and Family support services, foster care and supervised semi-independent living arrangements.

## **Goodwill Industries of Dallas, Inc.**

3020 N. Westmoreland, Dallas, TX 75212

[www.goodwilldallas.org](http://www.goodwilldallas.org) (214) 638-2800

Offers rehabilitation services in a vocational workshop for adults (ages 16 and older) with disabilities. Services include vocational evaluation, counseling, training, sheltered and competitive employment and fulfillment/outsourcing opportunities.

## **Marbridge**

P.O. Box 2250, Manchaca, TX 78652

[www.marbridge.org](http://www.marbridge.org) (512) 282-1144

Offers individualized residential care, education, and training to adults with various cognitive challenges. Must be at least 18 years of age for training. Summer Camp for ages 16-30 years.

## **Mosaic**

2245 Midway Road, Suite 300, Carrollton, TX 75006

[www.mosaicinfo.org](http://www.mosaicinfo.org) (972) 866-9989

A nonprofit, nation-wide organization dedicated to providing supports and advocacy to people with disabilities. Offers supported employment, in home supports, HCS, Texas Home Living Waiver and ICFMR programs, advocacy, day services and Children's services Funded through Medicaid, corporate/ foundation grants, fundraising and donations. Mosaic is affiliated with evangelical Lutheran Church of America.

**My Possibilities**

1301 Custer Road, Plano, TX 75075

[www.mypossibilities.org](http://www.mypossibilities.org) (469) 241-9100

Non-Profit, charity for adults with developmental disabilities. Full day, full year programs builds independence and pre-vocation skills. Ages 18+. Summer Programs available.

**nonPareil Institute**

P.O Box 260652, Plano, TX 75026

[www.npitx.org](http://www.npitx.org) (972) 467-0713

Provides training to individuals with Autism Spectrum Disorder who have completed High School and are transitioning into the workforce.

**North Texas Rehabilitation Services, Inc.**

3902 Cavalier Dr, Garland, TX 75042

[www.ntrsinc.com](http://www.ntrsinc.com) (972) 272-6526

Nonprofit agency providing work adjustment training for adults with physical and mental disabilities through vocational training opportunities, personal-social adjustment classes, on-the-job training, supportive employment and day habilitation services.



Photo taken from Berry Family Services website



# HOUSING OPTIONS (RESIDENTIAL AND IN-HOME)

## **29 Acres**

3000 Moseley Rd, Cross Roads, TX 76227

[www.29acres.org](http://www.29acres.org) (214) 550-8831

The 29 Acres Housing Development is a safe and dynamic supported living community where adults with autism (ASD) and other neuro-diversities will live and be supported enabling them to build relationships, feel value, success and happiness in their lives.

## **Abundant Life HCS**

[www.hcsintexas.com](http://www.hcsintexas.com) (214) 330-2222

Abundant Life provides home and community-based services that help individuals with disabilities and their families in the comfort of their homes.

## **Association for Independent Living (AFIL)**

[www.afildfw.org](http://www.afildfw.org) (214) 351-0798

For parents whose children will be finishing school, AFIL can get them ready to live more independent lives by offering them a half-way home and life skills to help them transition to independence.

## **Avid Quality Care**

[www.avidqualitycare.com](http://www.avidqualitycare.com) (972) 346-4144

Avid focuses on care for an individual's emotional, social, physical and intellectual needs in order to enhance their quality of life. They provide HCS, residential assistance, case management, nursing, counseling, therapies, adaptive aids, and health and dental treatment.

## **Community First Choice**

[www.hhsc.state.tx.us/medicaid/managed-care/community-first-choice/](http://www.hhsc.state.tx.us/medicaid/managed-care/community-first-choice/)

Texas Health and Human Services Commission is now offering a basic attendant and habilitation services through the STAR PLUS managed care program called Community First Choice (CFC).

## **Community Homes for Adults, Inc. (CHAI)**

11615 Forest Central Drive, Suite 100, Dallas, TX 75243

[www.chaidallas.org](http://www.chaidallas.org) (214) 373-8600

CHAI provides state-of-the-art group homes and vocational, educational, social and spiritual programs for adults with intellectual disabilities. Services include group homes, day habilitation services and life skills programs to instill a capacity for independence and self-sufficiency for their residents.

## **Community for Permanent Supported Housing**

[www.txcpsph.org](http://www.txcpsph.org)

CPSH collaborates with parents, property owners, city government and the larger community in North Texas to establish safer, more affordable housing options for adults with disabilities. Housing created through CPSH is not a traditional group home but an innovative approach to affordable, sustainable housing.

## **DHI (Disability Help, Inc.)**

[www.disabilityhelpinc.com](http://www.disabilityhelpinc.com) (800) 670-6274

DHI provides assistance to people with disabilities in getting benefits from social security. Their services include assistance with filing claims, representing claimants in hearings and answering SSI questions.

## **Marbridge**

[www.marbridge.org](http://www.marbridge.org) (512) 282-1144

Serving more than 250 adults, Marbridge is nestled on over 200 acres, just 13 miles south of downtown Austin, Texas. Marbridge provides a distinct alternative to group homes for adults with intellectual disabilities, offering a full spectrum of services tailored to individual needs and abilities. Each of our three communities — The Ranch, The Village, and The Villa — provide a different level of care, support, and guidance.

# SOCIAL SKILLS GROUPS

## **The Behavior Exchange**

[www.thebehaviorexchange.com](http://www.thebehaviorexchange.com) (469) 225-4497

Social Skills groups in Plano, N. Dallas, and DFW Metroplex.

Group therapy, one on one therapy, summer camp, parent training, School support/Advocacy, school consulting, ABA therapy.

## **Center for Social Success**

[www.dristre.com](http://www.dristre.com) (972) 404-3001

Child, teen and family services, social skills groups for Autism, ADHD and many other diagnoses, Play therapy, animal assisted therapy. Located in N. Dallas. Does not file insurance claims.

## **CHAI (Community Homes for Adults)**

[www.chaidallas.org](http://www.chaidallas.org) (214) 373-8600

CHAI provides programs and services that enable adults with intellectual disabilities to live as independently as possible and to enrich their lives by building relationships with each other and the larger community.

## **Dallas Cognitive Wellness Center**

[www.dallascognitivewellnesscenter.com](http://www.dallascognitivewellnesscenter.com) (469) 405-0877

Social skills groups and services benefit children and young adults with ADHD, Asperger's Disorder, Tic Disorders, Social Anxiety Disorder, or anyone who experiences social challenges. Located in Dallas. In-Network with most major insurance companies.

## **Donna Peddy**

[www.personalsolutions.com](http://www.personalsolutions.com) (214) 349-5564

Social Skills group training for various issues. Counseling for ADHD, behavioral emotional, cognitive and perceptual.

## **Friendship Circle of Dallas**

[www.friendshipdallas.org](http://www.friendshipdallas.org) (214) 810-2770

The Friendship Circle is dedicated to helping children and young adults with special needs to become more fully integrated into the broader community. The program allows participants to enjoy the company of teenage and young adult volunteers in a full range of social activities. The Friendship Circle aims to enrich the lives of all participants through mutually advantageous interactions, creating lasting friendships, which consequently strengthen both the Jewish and greater communities.

## **Pedia Plex**

[www.pediaplex.net](http://www.pediaplex.net) (817) 442-0222

Located in Southlake and Ft. Worth. Offers ABA, Speech, Occupational, Psychology, Play, Social skills training and therapies, counseling, Autism testing and diagnosis. In-network for most major insurers.

## **Playworks Pediatric Therapy Services**

[www.playworkspts.com](http://www.playworkspts.com) (972) 387-1100

Social Skills group, occupational therapy, speech therapy, pre-school group.

## **Social Communication Connection**

[www.scc-slp.com/about-tscc](http://www.scc-slp.com/about-tscc) (214) 736-2230

Social skills groups and services to young children (ages 18 months – 6 years) with challenges in speech-language, social communication, joint play, and/or behavior, and their families. Diagnoses may include: speech-language delay, sensory processing disorder, social communication disorder, autism spectrum disorder, attention deficit disorder, anxiety, and social skills deficits. Also offers summer social groups. Some services may be reimbursable as out-of-network by insurance companies.

## **Spectra Therapies**

[www.spectratherapies.com](http://www.spectratherapies.com) (972) 985-1100

Social skills groups for age 3-late adulthood with ASD, ADD, ADHD, etc. Located in Plano offers testing and evaluation, Autism evaluation for 18 months-adult, social skills training for groups and individuals, parent training, sibling support, and consultations. Out of network with all insurance carriers.

# SPECIALTY PROGRAMS

## **Acing Autism**

[www.acingautism.org](http://www.acingautism.org)

Group tennis lessons and fun for children and teens with autism.

## **Belong Disability Ministry- Highland Park United Methodist Church**

[www.hpumc.org/belong](http://www.hpumc.org/belong)

Religious services, programs, classes and respite care for children with disabilities and their families.

## **Beyond Karate**

[www.beyondkarate.com](http://www.beyondkarate.com)

Inclusive martial arts school open to people of all abilities.

Multiple locations: Plano, Richardson, Allen, Flower Mound

## **Buddy Up Tennis**

[dallas@buddyuptennis.com](mailto:dallas@buddyuptennis.com)

Fun, fitness and tennis for children and young adults with Down's Syndrome.

## **Cap Tel Outreach**

[www.oeius.org](http://www.oeius.org) 1(877) 473-4003

Captioned telephone services for individuals with hearing loss.

## **Cardinal Care**

[www.cardinalcare.org](http://www.cardinalcare.org) (469) 247-9694

Community agency offering coaching and instruction for meeting individual disability needs.

## **Dallas Area Rapid Transit Ambassador Program**

101 North Peak Street, Dallas, TX 75226

[www.dart.org/riding](http://www.dart.org/riding) (214) 828-8588

Travel orientation for people with disabilities.

## **Community for Permanent Supported Housing (CPSH)**

[www.txcpsph.org](http://www.txcpsph.org)

Organization dedicated to finding supportive community-based housing for adults with special needs in Dallas/Ft. Worth area.

## **Deaf Action Center**

3110 Cedar Plaza Lane, Dallas, TX 75235

[www.dactexas.org](http://www.dactexas.org) (214) 521-0407

Ensures advancement through education to individuals who are deaf and hard of hearing.

## **Especially Needed**

10121 Waterstone Way, McKinney, TX 75070

[www.especiallyneeded.org](http://www.especiallyneeded.org) (214) 499-3439

Non-profit building a strong community where individuals with special needs are valued, respected and included.

## **Hope's Seed**

11223 Wonderful Trail, Dallas, TX 75229

[www.hopesseed.com](http://www.hopesseed.com) (214) 673-7047

Enriching the lives of children who are medically fragile or terminally ill.

## **H.E.R.O.E.S. (Helping Everyone Reach Outstanding Educational Success)**

101 S. Coit Road, Suite 36-348, Richardson, TX 75080

[www.heroesdfw.org](http://www.heroesdfw.org) (972) 663-5853

H.E.R.O.E.S. strives to create social, recreational and vocational programs designed to meet the unique needs of individuals with disabilities. H.E.R.O.E.S. strongly encourages the integration of all individuals in to their community by providing social models, communication, emotional and behavioral supports. H.E.R.O.E.S. staff is composed of certified educators, certified instructional assistants, college interns, licensed therapists and trained volunteers.



**Park Cities School of Music**

7979 Inwood Road #113, Dallas, TX

(214) 455-1477

Music school offering programs for children with special needs.

**We Rock the Spectrum**

11722 Marsh Lane #336, Dallas, TX 75229

[www.werockthespectrumdallas.com](http://www.werockthespectrumdallas.com) (214) 468-4880

A safe, nurturing, fun environment to foster learning, exploration, and safe sensory experiences.

**Camp Summit**

[www.campsummittx.org](http://www.campsummittx.org) (972) 484-8900

Year-round barrier-free camp for individuals with disabilities, ages 6-99. Activities include: archery, horseback riding, swimming, ropes course, zip line, arts & crafts, photography, science, s'mores and more.

**Special Olympics Texas**

13400 Immanuel Road #1C, Pflugerville, TX 78660

[www.sotx.org](http://www.sotx.org) (512) 835-9873

Provides year-round sports training and athletic competition in a variety of Olympic-type sports for children and adults with intellectual disabilities.

**Jasmine's Beat**

[www.Jasminesbeat.com](http://www.Jasminesbeat.com)

Provides Adaptive Fusion Dance and Adaptive Theatre Dance classes with an optional sensory-sensitive recital. Taught by a recreational therapist with more than 20 years' experience working with many different disabilities. In person with masks or virtual.

**Rays of Light**

[www.raysoflightdallas.org/programs](http://www.raysoflightdallas.org/programs)

Rays of Light creates a unique evening for children with special needs and their siblings on the 1st, 2nd and 3rd Fridays of every month. Night Lights gives the parents the opportunity to have four free hours and the children get four hours of socialization and interaction with their volunteers and peers, through structured, fun and educational activities.



Photo taken from Buddy Up Tennis website

# SPECIALTY TREATMENTS

## **ABC Pediatrics**

[info@abc-pediatrics.com](mailto:info@abc-pediatrics.com) (972) 410-5297

CBT and ABA are intensive approaches, and through them our services can treat a variety of disorders including Autism, Asperger Syndrome, problem behaviors, Sensory Processing Disorder, aggression, and injurious behaviors.

## **Autism Treatment Center**

11651 Plano Rd, Ste 100, Dallas, TX 75243

[www.atcoftexas.org](http://www.atcoftexas.org) (469) 872-7720

The mission of the Autism Treatment Center (ATC) is to assist people with autism and related disorders throughout their lives as they learn, play, work and live in the community. Services include residential, educational, therapeutic, adult programs and research.

## **Center-Based ABA Therapy**

[www.behaviorpioneers.com](http://www.behaviorpioneers.com) (877) 803-8176

Behavior Pioneers is proud to offer center based ABA therapy in Carrollton and Richardson. Additionally, Behavior Pioneers is available for in-home ABA therapy throughout Dallas-Ft. Worth. All of our staff members are experienced, highly trained, and maintain an amazing level of patience and positivity!

## **Callier Center**

1966 Inwood Rd., Dallas, TX 75235

[www.calliercenter.utdallas.edu](http://www.calliercenter.utdallas.edu) (972) 883-3030

Experts identify and evaluate hearing and speech disorders in a family-centered environment to ensure patients are successful in their homes, schools and community.

## **Our Children's House**

1340 Empire Central, Dallas, Texas 75247

(214) 867-6700

Our Children's House is a specialty hospital providing comprehensive services to children from infancy through age 18 with developmental or birth disorders, traumatic injuries or severe illnesses.

## **Cook Children's**

1300 W. Lancaster Ave., Fort Worth, TX 76102

[www.cookchildrens.org](http://www.cookchildrens.org)

Child Study Center Cook Children's (CSC) provides children with complex developmental and behavioral disabilities the highest quality diagnosis, treatment, and education, to help them achieve their full potential. The Behavioral Health Center brings all services together in an expanded space that will provide a talented, dedicated team of caregivers, physicians and professionals with the facilities, resources, tools and programs they need to ensure that these most vulnerable children receive the high quality treatment they need and deserve.

## **Scottish Rite for Children**

2222 Welborn Street, Dallas, Texas 75219

[www.scottishriteforchildren.org](http://www.scottishriteforchildren.org) (214) 559-7400

Scottish Rite for Children treats many of the world's most complex orthopedic cases, as well as certain related arthritic and neurological disorders and learning disorders, such as dyslexia.

## **Dallas Center**

8550 Cadenza Lane, Dallas, TX 75228

[www.dallascenter.org](http://www.dallascenter.org) (214) 328-4309

Dallas Center is committed to providing services to individuals in the least restrictive environment in order for them to realize their full potential and participate in the mainstream of life to the highest degree possible.

## **Metrocare Services**

1345 River Bend Drive, Suite 200, Dallas, Texas 75247

[www.metrocareservices.org](http://www.metrocareservices.org) (214) 743-1200

Metrocare Services is a large-scale, premier mental, physical and emotional health services provider in North Texas.

**Aveanna Healthcare**

17480 North Dallas Parkway, Suite 221, Addison, TX 75287

[www.aveanna.com](http://www.aveanna.com) (214) 623-5900

Aveanna's broad range of services expands beyond in-home private duty nursing care to include in-home aide services, respite care, school nurse services, therapies, and rehabilitation.

**H.E.R.O.E.S.**

101 S. Coit Rd. Suite 36-348, Richardson, TX 75080

[www.heroesdfw.org](http://www.heroesdfw.org) (972) 663-5853

H.E.R.O.E.S. serves all people with different abilities from ages three through adulthood. Supports families through resources and lifelong learning, teaching the skills necessary for all individuals to become contributing members of society.

**Keystone Pediatric Therapy**

2720 Virginia Parkway, Suite 300, McKinney, TX 75071

[www.keystonepediatric.com](http://www.keystonepediatric.com) (972) 548-1990

Offers speech, language, feeding, and occupational therapy in a family oriented environment where parents and caregivers are an integral part of the child's team.

**Kidz Therapy Zone**

1101 Central Expressway S. Suite 185, Allen, TX 75013

[www.kidztherapyzone.com](http://www.kidztherapyzone.com) (214) 509-6961

Provides caring, innovative and fun pediatric therapy. Occupational Therapists, Speech Language Therapists, and a Physical Therapist deliver these services all under one roof.

**It's a Sensory World!**

13617 Neutron Rd., Farmers Branch, TX 75244

[www.itsasensoryworld.org](http://www.itsasensoryworld.org) (972) 239-8100

Center that offers a variety of multi-sensory, educational, recreational, and therapeutic services for children with special needs and their families.

**Positive Behavior Supports Corporation**

[www.teampbs.com/Services.aspx](http://www.teampbs.com/Services.aspx) (855) 832-6727

PBS Corp. provides a variety of applied behavior analysis services through highly-qualified behavior analysts to meet the unique needs of individuals, families and systems. These services include training and consultation, services within schools and agencies and intensive behavior intervention.

**Sage Care Therapy Services**

6301 Gaston Ave., Ste. 750, Dallas, TX 75214

[www.sagecaretherapy.com](http://www.sagecaretherapy.com) (214) 295-5374

Sage Care Therapy Services provides the highest quality in-home pediatric Physical Therapy, Occupational Therapy, and Speech and Feeding Therapy in the Dallas-Fort Worth region. Serves infants, toddlers, children and young adults who have complex medical and developmental needs.

**Small Hands Big Hearts**

404 Racquet Club Blvd., Bedford, Texas 76022

[www.shbhtherapy.com](http://www.shbhtherapy.com) (682) 738-3056

Small Hands Big Hearts is dedicated to the work of healing through a commitment to empowering children and their families.

**Special Care & Career Services**

4350 Sigma Rd., Farmers Branch, TX 75244

[www.autismlink.com/dir/special-care-career-services](http://www.autismlink.com/dir/special-care-career-services) (972) 991-6777

Special Care & Career Services supports families, children and adults with developmental disabilities by providing three key services to Denton, Collin and Dallas counties with three age-determined programs: Early Childhood Intervention, Child Development Enrichment Services, and Supported Employment Services.

**Therapy and Beyond**

[www.therapyandbeyond.com](http://www.therapyandbeyond.com) (844) 422-2669

Combines ABA, Speech Therapy and Occupational Therapy for individuals with autism and other developmental differences.



# ALTERNATIVE THERAPIES

## **Aqua-Fit**

[www.aquafitplano.com](http://www.aquafitplano.com) (972) 578-7946

Special needs swimming basics, lessons in groups or private.

## **Aqua Stars for Special Needs Children**

[www.cityofirving/AquaStarsfor-Special-Needs-Children](http://www.cityofirving/AquaStarsfor-Special-Needs-Children)

Allows children with special needs (along with a parent or guardian) to enjoy monthly access to a premier swimming facility.

## **ASI Gymnastics – Gymmie Kids Program**

[www.asigymnastics.com/gymmiekids](http://www.asigymnastics.com/gymmiekids)

Gymnastic programs tailored to each child's specific needs. Ages 3-18. Private lessons or group classes accommodate intellectual, developmental delays, physical, emotional and behavioral issues.

## **Dallas Jr. Wheelchair Mavericks Basketball**

[www.dallasjuniorwheelchairmavericks.org](http://www.dallasjuniorwheelchairmavericks.org) (214) 549-3971

Wheelchair basketball program for ages 5-18.

## **Equest**

[www.equest.org](http://www.equest.org) (214) 412-1099

Equine-assisted therapy for children and adults with physical, mental, emotional, and intellectual disabilities.

## **H2oPE**

[www.offthedeependaquatic.com/H2oPE](http://www.offthedeependaquatic.com/H2oPE) (817) 267-0207

H2oPE is a fun, community outreach aquatic fitness program for children with special needs. The program provides an alternative recreational activity to help meet the physical, cognitive and psychosocial needs of children in a fun, non-competitive experience to improve physical and mental health. Classes are offered at Presbyterian Hospital in Dallas and Texas Health Resources in Euless.

## **It's a Sensory World!**

[www.itsasensoryworld.org](http://www.itsasensoryworld.org) (972) 239-8100

This nonprofit center offers a variety of multi-sensory education, recreation and therapy for children with special needs and their families.

## **Mane Gait**

3160 North Custer Road, McKinney, TX 75071

[www.manegait.org](http://www.manegait.org) (469) 423-5650

Therapeutic horsemanship where children and adults with disabilities move beyond any boundaries or limitations through the healing power of the horse and rider relationship.

## **Miracle League**

[www.friscomiracleleague.org](http://www.friscomiracleleague.org) (214) 295-6411

[www.miracleleagueofsouthlake.org](http://www.miracleleagueofsouthlake.org) (817) 946-9136

Baseball leagues for every age – Minors (10 and under), Majors (10-14), Seniors (14 and up) and Competitive (for high-functioning skills 12 and up).

## **Rise Adaptive Sports**

[www.riseadaptivesports.org](http://www.riseadaptivesports.org) (459) 762-5075

Rise assists persons with physical challenges to Recover, Inspire, Succeed and Empower themselves and others by providing inclusive adaptive recreational sports programs, free of charge.

## **Skate Foundation**

[www.a.skate.org](http://www.a.skate.org)

A nonprofit that allows children with autism to be part of the social world, making friends through skateboarding. Free clinics for ages 3-adult. Grants available for gear and safety equipment.

**Southwind – Children's Autism Therapy Ranch**

[www.therapyranch.com](http://www.therapyranch.com) (832) 294-4421

This full-time program located in Argyle, Texas, provides comprehensive and integrated pediatric behavioral therapy in a faith-filled family environment. Transportation available from Grapevine and Roanoke. Insurance accepted.

**Special Olympics Area 10, Greater Dallas**

[www.sotx.org](http://www.sotx.org) (703) 532-7433

Organization focuses on participation in many different sports, not competition. Also has MATP, Motor Activities Training Programs for athletes who cannot participate in Special Olympics programs.

**Golden Tiger Taekwondo Academy, Garland**

(214) 549-6551

Taekwondo for Students with Special Needs

**YMCA Adaptive Swim Programs**

[www.ymcadallas.org/disabilities](http://www.ymcadallas.org/disabilities)

Swimming programs for children with special needs and other disabilities at various locations. Call for times, location and schedule.

**Habima Theatre**

[www.chaidallas.org](http://www.chaidallas.org)

Habima Theatre is a joint program of the Jewish Community Center of Dallas and Community Homes for Adults, Inc. It promotes dignity, respect, and acceptance of people with developmental disabilities through annual productions cast almost entirely with actors with disabilities. During the course of rehearsals and the performance, participants grow in many ways, each empowered and enriched by the accomplishments of the group.



Photo taken from Equest website



# PARENT AND GUARDIAN SUPPORT GROUPS

## **ADD/LD Parent Support of Collin County**

**SSCaroline@aol.com (972) 396-1216**

This support group holds meetings at the First United Methodist Church of Allen featuring guest speakers, videos and information for parents of children with this learning disability.

## **Cerebral Palsy Group**

**[www.cerebralpalsygroup.com/cerebral-palsy](http://www.cerebralpalsygroup.com/cerebral-palsy) (321) 456-9875**

Cerebral Palsy Group provides educational information and support to those who have cerebral palsy (an umbrella term referring to a group of disorders affecting a person's ability to move).





# TEXAS RESOURCES

## **The Arc of Texas**

8001 Centre Park Drive, Suite 100, Austin, TX 78754

[www.thearcoftexas.org](http://www.thearcoftexas.org) (512) 454-6694

The Arc has been instrumental in the creation of virtually every program, service, right, and benefit that is now available to more than half a million Texans with intellectual and developmental disabilities. Today, The Arc continues to advocate for including people with intellectual and developmental disabilities in all aspects of society.

## **Children with Special Health Care Needs Program**

P.O. Box 149347, Austin, TX 78714

[www.hhs.texas.gov/services/disability/children-special-health-care-needs-program](http://www.hhs.texas.gov/services/disability/children-special-health-care-needs-program) (800) 222-3986

The Children with Special Health Care Needs Services Program helps children 20 and younger who have special health care needs and people with cystic fibrosis of any age improve their health, well-being and quality of life.

## **Department of Assistive and Rehabilitation Services (DARS)**

5501 Abrams #115, Dallas, TX 75214

[www.dars.state.tx.us](http://www.dars.state.tx.us) (800) 687-7019

Created during the reorganization of state health and human service agencies. It is now a centralized agency for programs formerly provided by Texas Rehabilitation Commission, Texas Commission for the Blind, Texas Commission for the Deaf and Hard of Hearing and the Interagency Council on Early Childhood Intervention. The mental health program formerly provided by the Texas Department of Mental Health and Mental Retardation are now offered through this agency.

## **Disability Rights Texas**

[www.disabilityrightstx.org/en/home](http://www.disabilityrightstx.org/en/home) 1 (800) 252-9108

Non-profit organization helping protect people with disabilities from the many forms of discrimination that limit their full and equal participation in society — because all people have dignity and worth.

## **ECI (Early Childhood Intervention)**

[www.hhs.texas.gov/services/disability/early-childhood-intervention-services](http://www.hhs.texas.gov/services/disability/early-childhood-intervention-services) (877) 787-8999

ECI is a statewide program within the Texas Health and Human Services Commission for families with children birth up to age 3, with developmental delays, disabilities or certain medical diagnoses that may impact development.

## **Mental Health Mental Resources Foundation**

3840 Hulen Street, North Tower, Ft. Worth, TX 76107

[www.mhmrtarrant.org](http://www.mhmrtarrant.org) (817) 569-4300

MHMR provides community-based services for youth and adults with intellectual and developmental disabilities (IDD), mental health conditions, and substance use disorders, as well as babies and young children with developmental delays.

## **Texas Advocates Supporting Kids with Disabilities (TASK)**

P.O. Box 162685, Austin, TX 78716

(512) 336-0897

For questions or representation email: [ASKTASK@aol.com](mailto:ASKTASK@aol.com)

## **Texas Center for Disability Studies**

4030 W. Braker Lane, Building 2, Suite 220, Austin, TX 78759

[www.tcds.edb.utexas.edu](http://www.tcds.edb.utexas.edu) (512) 232-0740

[txcds@uttcds.org](mailto:txcds@uttcds.org)

## **Texas Commission for the Blind**

P.O. Box 12866, Austin, TX 78711

[www.dars.state.tx.us/dbs/index.html](http://www.dars.state.tx.us/dbs/index.html) (512) 377-0500

[DARS.Inquiries@dars.state.tx.us](mailto:DARS.Inquiries@dars.state.tx.us)

## **Texas Commission for the Deaf and Hard of Hearing**

P.O. Box 12904, Austin, TX 78711

[www.dars.state.tx.us/dhhs/index.shtml](http://www.dars.state.tx.us/dhhs/index.shtml) (512) 407-3250

**Texas Council for Developmental Disabilities**

6201 E. Oltorf, Suite 600, Austin, TX 78741

[www.txddc.state.tx.us/tcdd.state.tx.us](http://www.txddc.state.tx.us/tcdd.state.tx.us) (512) 437-5432

**Texas Department of Disability Services**

1100 West 49th Street, Austin, TX 78756

[www.hhs.texas.gov/services/disability](http://www.hhs.texas.gov/services/disability)

Texas Health and Human Services (HHS) provides a range of services to Texans with disabilities that help ensure their well-being, dignity and choice. Programs also are in place to support family members who care for them.

**Texas Department of Health**

1100 West 49th Street, Austin, TX 78756

[www.dshs.state.tx.us/chen/default.shtm](http://www.dshs.state.tx.us/chen/default.shtm) (512) 458-7111, ext. 3110

**Texas Education Agency**

1701 North Congress, Austin, TX 78701

[www.tea.texas.gov/about-tea/laws-and-rules](http://www.tea.texas.gov/about-tea/laws-and-rules) (512) 463-9734

The Texas Education Agency administers the laws and rules that govern education in the state. Special Education in Texas is subject to a specific set of state and federal rules and regulations. This site contains information on special education laws dictated by federal law (the Individuals with Disabilities Education Act), State Board of Education rules, commissioner's rules, and state laws.

**Texas Federation of Families for Children's Mental Health**

7800 Shoal Creek Blvd, Suite 2438, Austin, TX 78757

[www.txffcmh.org](http://www.txffcmh.org) (512) 407-8844

TXFFCMH is the state-wide family network helping parents learn how to advocate for their child with education, legislative updates, help with the IEP process, and linking them to local resources.

**Texas Organization of Parent Attorneys and Advocates**

[www.topaaorginfo@topaa.org](mailto:www.topaaorginfo@topaa.org)

An independent, non-profit, 501(c) (3) organization of advocates, attorneys, and parents.

**Texas Parent to Parent**

[www.txP2P.org](http://www.txP2P.org) (512) 458-8600

Statewide non-profit organization developed for parents by parents. It provides parent-to-parent matches/mentors, support, information, website, resources, newsletter and training.

**SPEDTex - Special Education Information Center**

[www.spedtex.org](http://www.spedtex.org) 1 (855) 773-3839

This is a resource backed by the Texas Education Agency to inform and support parents, teachers, and anyone committed to the success of children with disabilities.



# NATIONAL ORGANIZATIONS

## **AUTISM RESOURCES:**

**Autistic Self Advocacy Network:** [www.autisticadvocacy.org](http://www.autisticadvocacy.org)

**Autism Speaks:** [www.autismspeaks.org](http://www.autismspeaks.org)

**National Autism Association:** [www.nationalautismassociation.org](http://www.nationalautismassociation.org)

## **DYSLEXIA:**

**International Dyslexia Association:** [www.dal.dyslexiaida.org](http://www.dal.dyslexiaida.org)

## **MENTAL ILLNESS:**

**National Alliance on Mental Illness (NAMI Dallas):** [www.namidallas.org](http://www.namidallas.org)

## **EDUCATION for CHILDREN with DISABILITIES:**

**Ability Bridge:** [www.abilitybridge.com](http://www.abilitybridge.com)

**Family Education Network:** [www.familyeducation.com](http://www.familyeducation.com)

**Handwriting without Tears:** [www.lwtears.com/hwt](http://www.lwtears.com/hwt)

**Woodbine House:** [www.woodbinehouse.com](http://www.woodbinehouse.com)

## **CEREBRAL PALSY RESOURCES:**

**Cerebral Palsy Group:** [www.cerebralpalsygroup.com](http://www.cerebralpalsygroup.com)

**Cerebral Palsy Guidance:** [www.cerebralpalsyguidance.com](http://www.cerebralpalsyguidance.com)

**Cerebral Palsy Guide:** [www.cerebralpalsyguide.com](http://www.cerebralpalsyguide.com)

**Conscious Discipline:** [www.consciousdiscipline.com](http://www.consciousdiscipline.com)

**Disability Solutions:** [www.disabilitysolutions.org](http://www.disabilitysolutions.org)

## **DOWN SYNDROME RESOURCES:**

**Down Syndrome Quarterly:** [www.denison.edu/dsq](http://www.denison.edu/dsq)

**Down Syndrome Research Foundation and Resource Center:** [www.dsrf.org](http://www.dsrf.org)

**Down Syndrome: Health Issues:** [www.ds-health.com](http://www.ds-health.com)

**National Association for Down Syndrome:** [www.nads.org](http://www.nads.org)

**National Down Syndrome Congress:** [www.ndsccenter.org](http://www.ndsccenter.org)

**National Down Syndrome Society:** [www.ndss.org/](http://www.ndss.org/)

**The Down Syndrome Guild of Dallas:** [www.downsyndromedallas.org](http://www.downsyndromedallas.org)

**The National Association for the Education of Young Children:** [www.naeyc.org](http://www.naeyc.org)

**Woodbine House:** [www.woodbinehouse.com](http://www.woodbinehouse.com)

## **INTELLECTUAL DISABILITIES:**

**Administration on Intellectual and Developmental Disabilities:** [www.autismnow.org](http://www.autismnow.org)

**ARCH National Respite Network and Resource Center:** [www.archrespite.org](http://www.archrespite.org)

**Association of University Centers on Disabilities:** [www.aucd.org](http://www.aucd.org)

**Children and Adults with Attention Deficit/Hyperactivity Disorder:** [www.chadd.org](http://www.chadd.org)

**Easter Seals Disability Services:** [www.Easterseals.com](http://www.Easterseals.com)

**Global Hydranencephaly Foundation:** [www.hydranencephalyfoundation.org/](http://www.hydranencephalyfoundation.org/)

**National Center on Secondary Education and Transition:** [www.ncset.org/default.asp](http://www.ncset.org/default.asp)

**National Collaborative on Workforce and Disability for Youth:** [www.ncwd-youth.info](http://www.ncwd-youth.info)

**National Council on Disability:** [www.ncd.gov](http://www.ncd.gov)

**National Institute of Health (NIH):** [www.nih.gov](http://www.nih.gov)

**National Organization on Fetal Alcohol Syndrome:** [www.nofas.org](http://www.nofas.org)

**National Organization for Rare Disease (NORD):** [www.rarediseases.org](http://www.rarediseases.org)

**PACER Center, Inc.:** [www.pacer.org](http://www.pacer.org)

**Partnership for People with Disabilities:** [www.partnership.vcu.edu](http://www.partnership.vcu.edu)

**Social Security Supplemental Income:** [www.ssa.gov/pgm/ssi.htm](http://www.ssa.gov/pgm/ssi.htm)

**The Arc:** [www.thearc.org](http://www.thearc.org)

**Through the Looking Glass:** [www.lookingglass.org](http://www.lookingglass.org)

**Waisman Center:** [www.Waisman.Wisc.edu](http://www.Waisman.Wisc.edu)



**DEAF AND HARD OF HEARING:**

Dove: [www.deafdove.org](http://www.deafdove.org)

Hands and Voices: [www.handsandvoices.org/index.htm](http://www.handsandvoices.org/index.htm)

International Federation of Hard of Hearing People Dove (IFHOHP): [www.ifhoh.org](http://www.ifhoh.org)

World Federation of the Deaf: [www.wfdeaf.org](http://www.wfdeaf.org)

World Recreation Association of the Deaf (WRAD): [www.wrad.org](http://www.wrad.org)

**GENETIC DISORDERS:**

International Federation for Spina Bifida and Hydrocephalus: [www.ifglobal.org](http://www.ifglobal.org)

Prader-Willi Syndrome Association: [www.pwsausa.org](http://www.pwsausa.org)

The Genetic Alliance: [www.geneticalliance.org](http://www.geneticalliance.org)

National Organization for Rare Disease (NORD): [www.rarediseases.org](http://www.rarediseases.org)

