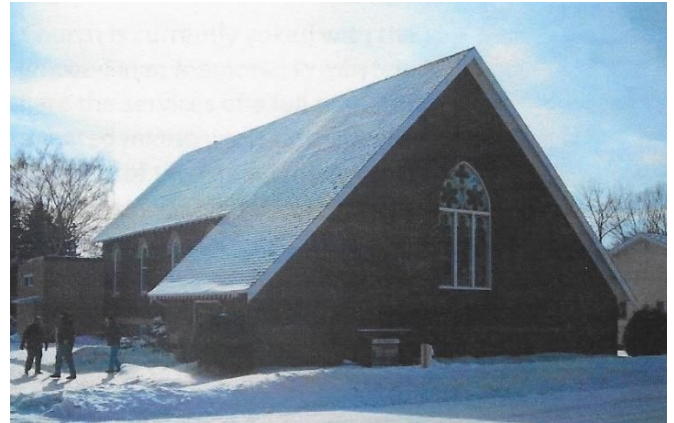




First Presbyterian Church is attractive, well maintained, on a corner lot only one block from the school and manse. Church office, and library are on main floor with the fellowship hall, community clothes closet and education rooms on lower level

We're a winter hardy congregation with some snowbirds. Furnaces and AC are pre-programmed for efficient operation and usage. Large **Stained glass** windows are on three sides



Our **Sanctuary** is well lit, carpet is new, with an organ and piano up front and a modern sound system. We've broadcast services on social media since April and members can easily practice social distancing. Pre-Covid, members regularly gathered for coffee and a treat in the rear of church before services and we expect to return to that practice sometime in 2021.



A recent addition to the church is a unique **Prayer Garden**. Bricks are laid and many past and present members are providing memorials to put family and related names on bricks. Plans have been made for a privacy fence, trees, landscaping. We anticipate use will include small weddings, renewal of vows, special ceremonies etc.





The church **manse** is a modern four bedroom home with attached double garage, nice yard and deck on a corner lot. Living room, family room and a craft or workshop on lower level with separate entrance.

Members put in **new sidewalks and a parking lot** due to a recent donation. Our congregation is older but very dedicated and ready and able to work and donate time and resources when asked.



A beautiful **Pipe Organ** adorns the rear of the church that has a very spiritual sound and great acoustics.

The **Fellowship Hall** is in great condition, has acoustic ceiling panels and a wellplanned kitchen with a serving counter for potlucks, special meals and funerals.



Vacation Bible School has great attendance and community support using volunteers.

The 2020 **Children's Christmas** service was small due to Covid. Our congregation continues to support this and a community winter festival with a **Presbyterian Polar Plunge** (snow sleds on a ramp onto the ice)

