

To perpetuate forever, for public use, inspiration, esthetic enjoyment, and scientific study, an area along the central California coast of great natural beauty and scientific significance, including a diverse mosaic of native vegetation, scenic uplands, rocky shorelines, sandy beaches, wildlife, and archeological resources.

Montana de Oro State Park Declaration of Purpose (1988)

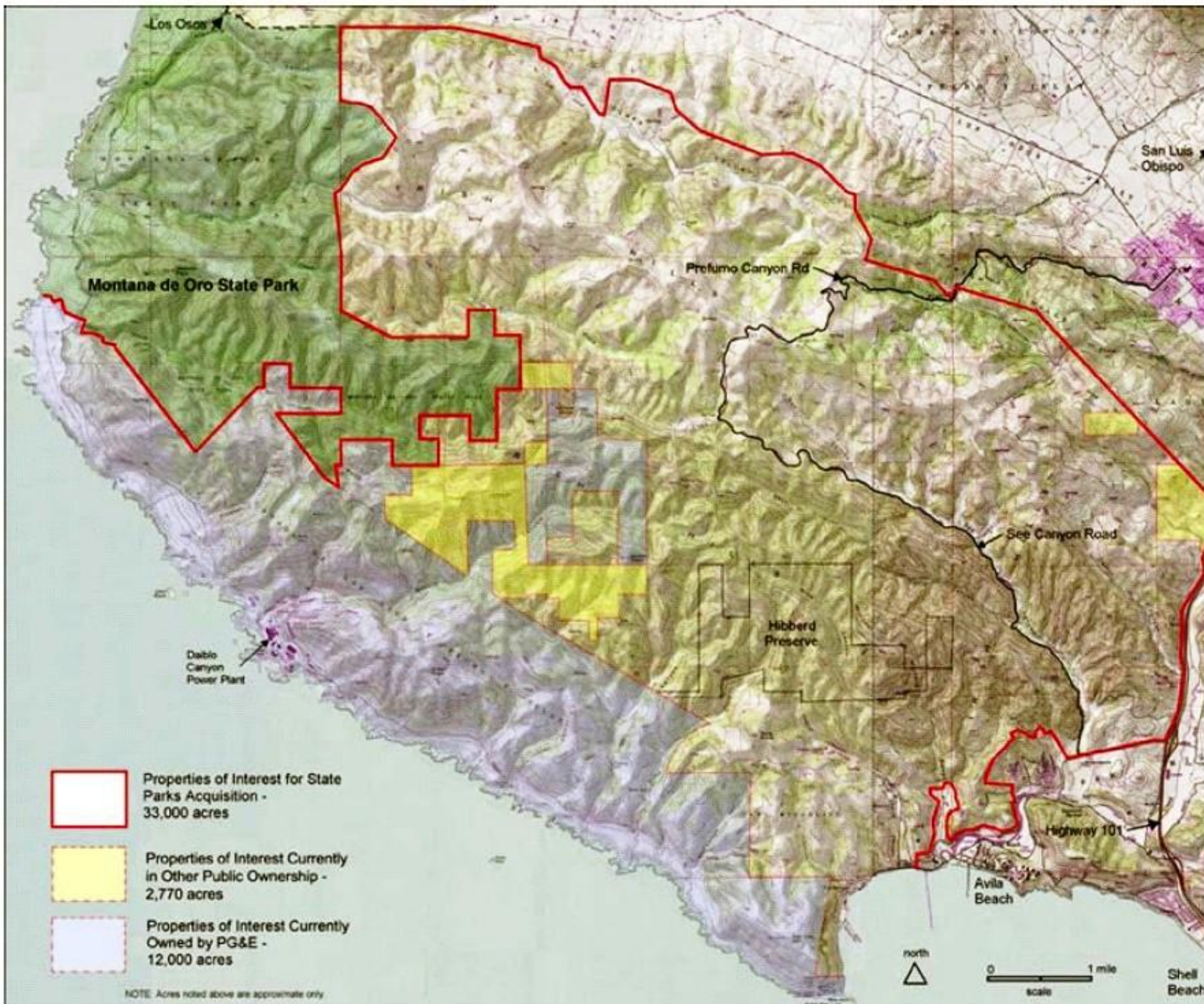
DIABLO LANDS

INCLUDING **WILD CHERRY CANYON**

A Community-Based Preservation and Recreation Vision for our Coast



FRIENDS OF WILD CHERRY CANYON and CONCERNED CITIZENS FOR AVILA



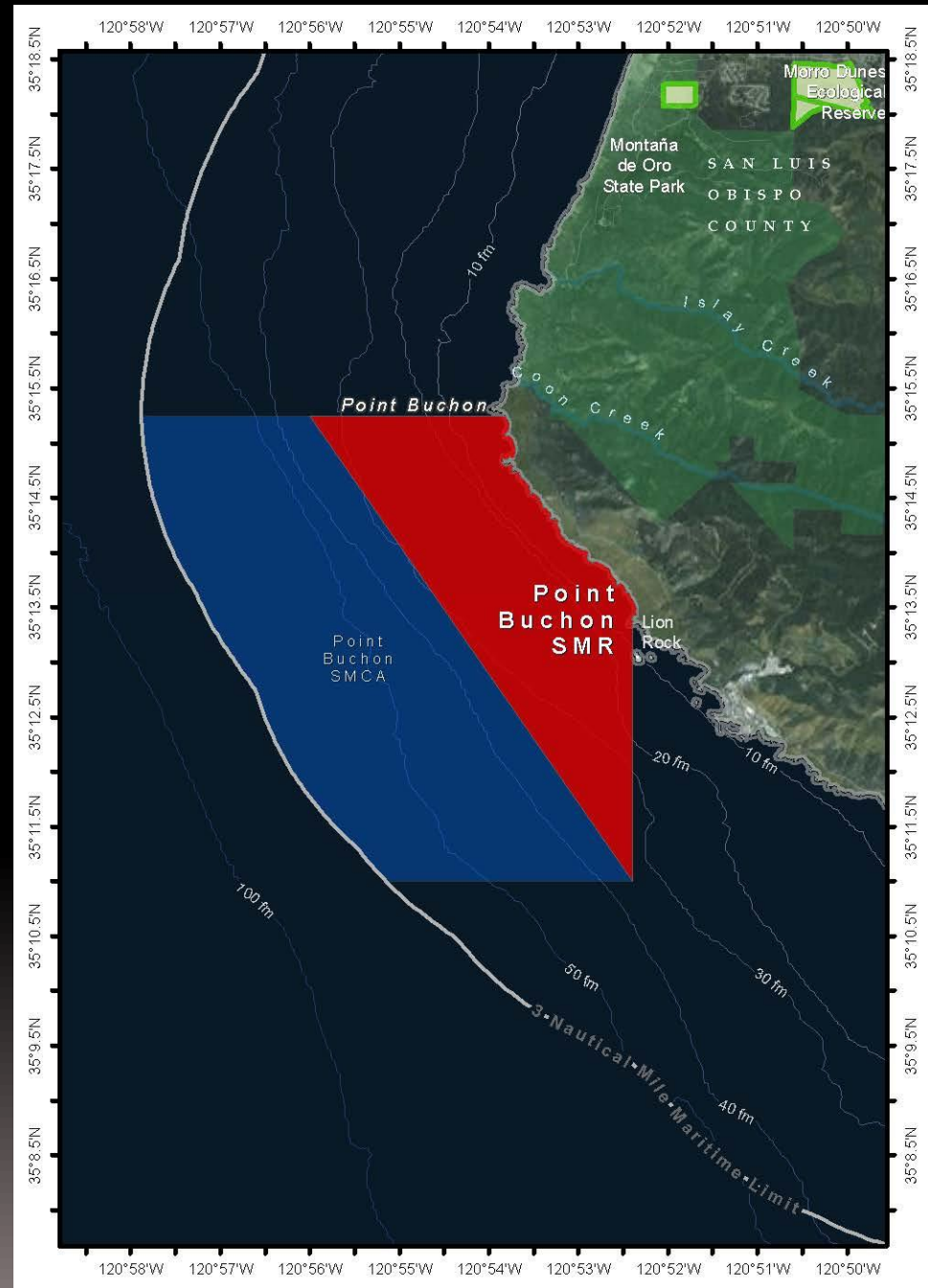
Point Buchon State Marine Reserve

Marine Life Protection Act

The Marine Life Protection Act of 1999 directs the state to:

1. Protect the natural diversity and abundance of marine life, and the structure, function and integrity of marine ecosystems.
2. Help sustain, conserve and protect marine life populations, including those of economic value, and rebuild those that are depleted.
3. Improve recreational, educational and study opportunities provided by marine ecosystems that are subject to minimal human disturbance, and to manage these uses in a manner consistent with protecting biodiversity.
4. Protect marine natural heritage, including protection of representative and unique marine life habitats in CA waters for their intrinsic values.
5. Ensure California's MPAs have clearly defined objectives, effective management measures and adequate enforcement and are based on sound scientific guidelines.
6. Ensure the State's MPAs are designed and managed, to the extent possible, as a network.

***Unless otherwise stated, all non-consumptive recreational activities are allowed**





WILD CHERRY CANYON



ROLLING HILLS & CANYONS









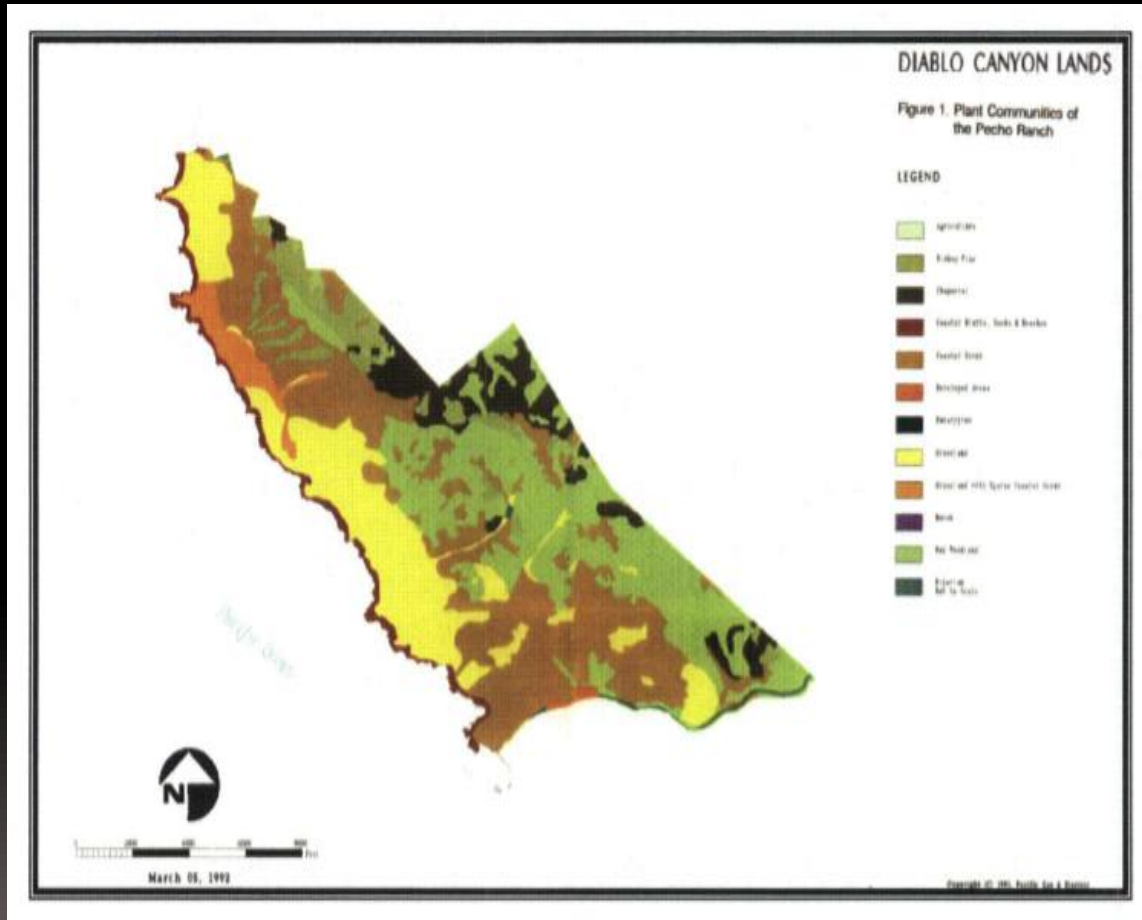


STONEHENGE



WINDY POINT

FIELD RANCH BIOLOGICAL INVENTORY



- Coastal bluffs, rocks and beaches
- Grassland (annual, coastal prairie, native bunch grass)
- Bishop Pine
- Chaparral
- Coastal Sage Scrub
- Oak Woodland
- Riparian
- Freshwater marsh





State Policy Goals re: Field Ranch – 30 yrs ago

- 1) **LEGISLATION:** In 1986 AB 3693 called for the Coastal Conservancy and DPR to evaluate the subject property for possible inclusion into Montana de Oro State Park
- 2) **STATE STUDY:** In October 1987 aforementioned agencies published Field Ranch Study
- 3) **FORMAL PLAN:** In June 1988 Montana de Oro General Plan was updated and approved

General Plan – Unresolved Issues

- **Field Ranch Acquisition** – “All other Field Ranch lands outside the power plant’s safety/security zone.
These lands should be managed for non-intensive recreational use.
More specific land use designations and resource management policies would require a detailed resource inventory of these lands.”

Page 146



DREAM INITIATIVE

Measure A – March 2000

Protection of all 12,000 acres of Diablo Lands – including Wild Cherry Canyon

Advisory Measure Placed on Ballot by
Unanimous vote of all SLO County
Supervisors

Peg Pinard 3rd District

Shirley Bianchi 2nd District

Mike Ryan 5th District

Harry Ovitt 1st District

Katcho Achadjian 4th District

Endorsed by:

Congresswoman Lois Capps (D)

State Senator Jack O'Connell (D)

State Assemblyman Abel Maldonado (R)

Avila Valley Advisory Council

Los Osos Community Service District

SLO Chamber of Commerce

Numerous Environmental Organizations

Quotes

PG&E

"It is because of PG&E's good stewardship that we support the DREAM Initiative" Missie Hobson,
(PG&E) Tribune 10/20/1999

"From PG&E's point of view, the goals it expresses for the land are consistent with ours", Jeff Lewis (PG&E)
LA Times 2/6/2000

Telegram Tribune

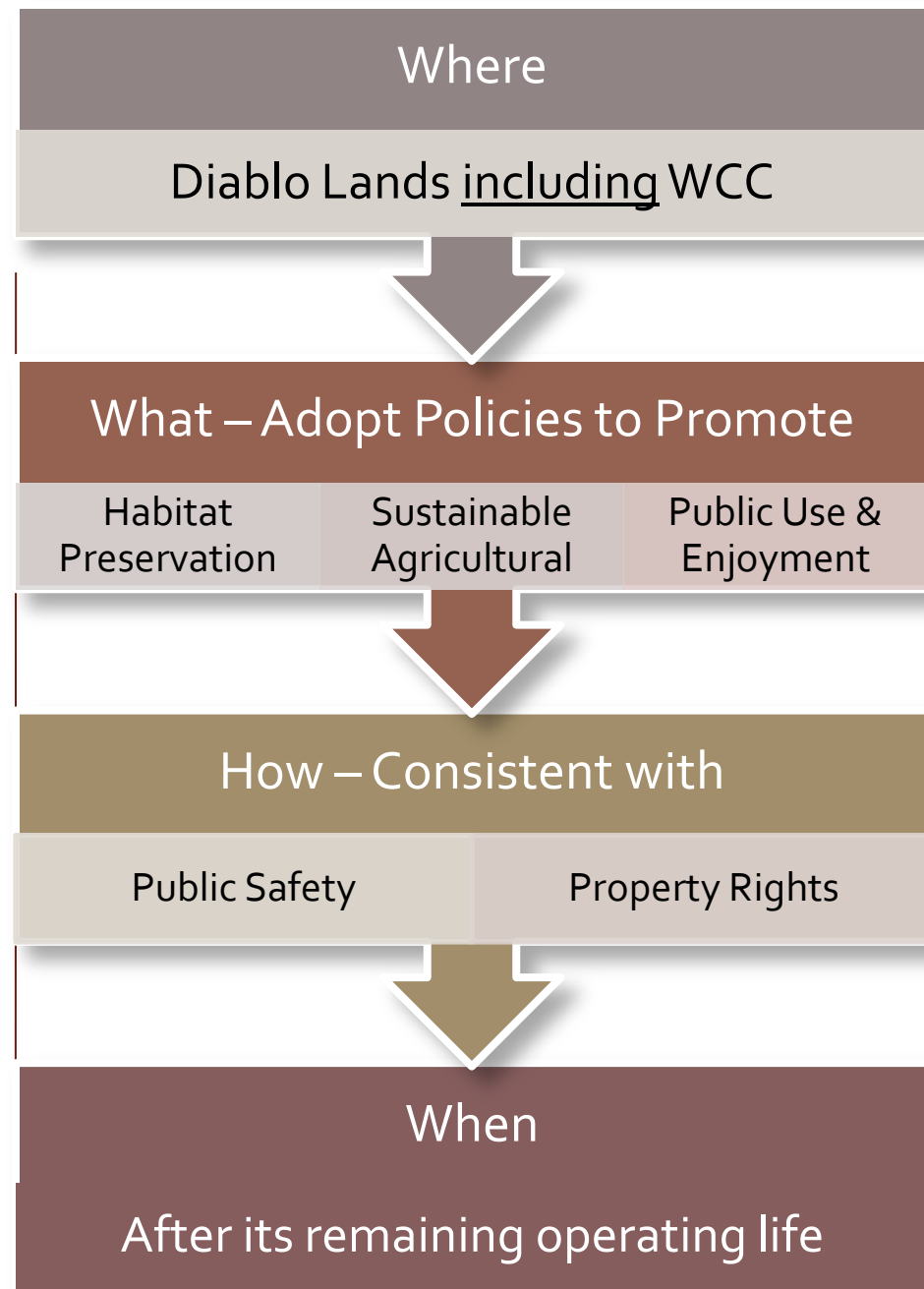
Preserving the land would be *"one of the great environmental achievements in the county's history"*,
and

"The measure was brought about by a thoroughly collaborative effort. We should all speak loud and clear by voting overwhelmingly in favor of Measure A"

Language of Measure A

DREAM INITIATIVE

“Shall the SLO Board of Supervisors recognize the Diablo Canyon Lands as an exceptionally precious coastal resource by adopting policies promote habitat preservation, sustainable agricultural activities, and public use and enjoyment consistent with public safety and property rights once the lands are no longer needed as an emergency planning buffer for the Diablo Canyon Nuclear Power Plant after its remaining operating life.”



Election Results – March 7th 2000

Passed – Aye Votes

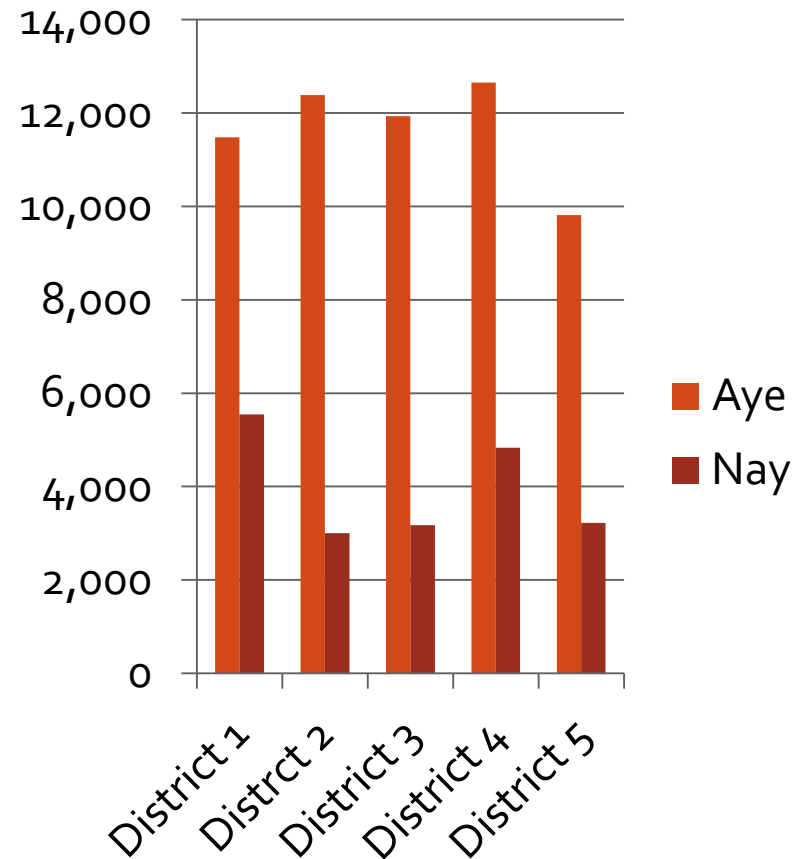
- County – 75%

Adjacent Incorporated Areas

- Morro Bay – 79%
- Pismo Beach – 77%

Supervisor Districts

- District 1 – 67%
- District 2 – 80%
- District 3 – 79%
- District 4 – 72%
- District 5 – 75%



ONGOING CONSERVATION EFFORTS

Hibberd Preserve

- 1,500 acres – LC SLO

Andre Ranch

- 1,200 acres - Easement
- 730 acres - DPR

Wright Properties

- 1,000 acres – DPR

Field Ranch Access Plan - CCC

Lighthouse Area – CCC

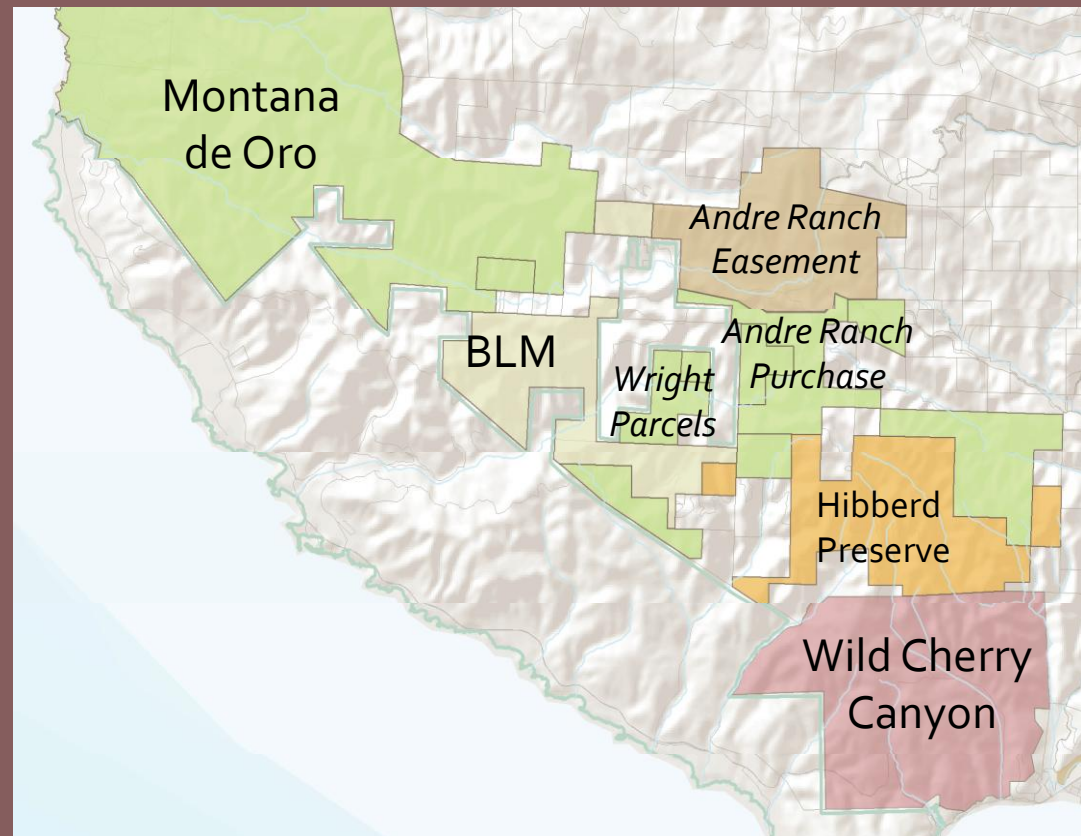
Wild Cherry Canyon

CA Coastal Commission

The Nature Conservancy

American Land Conservancy

Land Conservancy of SLO



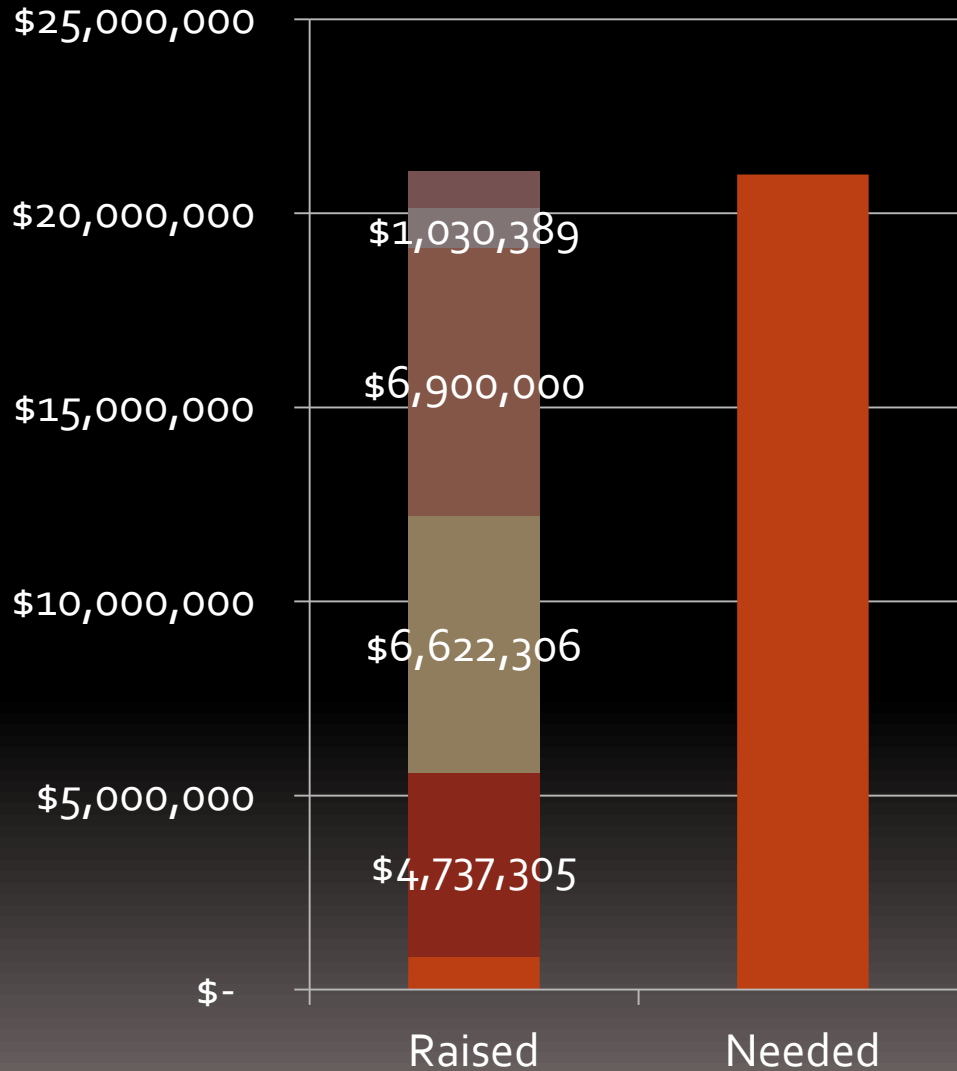


Wild Cherry Canyon: A Critical Link in Irish Hills Conservation



WILD CHERRY CANYON

Funding Partners



CA Coastal Conservancy
\$4,737,305

Wildlife Conservation Board
\$6,622,306

Dept Parks and Recreation - State Parks*
\$6,900,000*

Regional Water Quality Conservation Board
\$950,000

San Luis Obispo Council of Governments
\$850,000

CA Transportation Commission
\$1,030,389

Hind Foundation
\$150,000

Local Individuals
\$16,000

TOTAL
\$21,256,000

*pending approval by Public Works Board



Developer wants to build 15,000-home community on Diablo Canyon lands



A developer wants to build a 15,000-home community near the Diablo Canyon nuclear power plant at Wild Cherry Canyon, according to an email.

By Joe Johnston

ENVIRONMENT

Plans for massive 15,000-home city on Diablo Canyon lands uncovered in private email



BY MONICA VAUGHAN AND LINDSEY HOLDEN

mvaughan@thetribunenews.com

llholden@thetribunenews.com



February 23, 2018 07:28 PM

Updated February 26, 2018 03:21 PM



A local developer said he wants to build a 15,000-home community near the Diablo Canyon nuclear power plant in an area known as Wild Cherry Canyon, and he thinks he can cut a deal with PG&E for the land, drawing criticism from conservation groups and shock from county leaders.

According to an email obtained through the Public Records Act, Developer Denis Sullivan told another developer that he thinks he can get the support of county supervisors on a deal for a new community that could be one-and-a-half times the size of Grover Beach.

"Think we can get a deal with PG&E to get the fee (title)," the email says. "Think we should push forward a (sic) soon as possible."

Avila Congestion



**We advocate
for safety and
conscientious
planning**



Figure 1 - Avila Beach Drive west of San Luis Bay Drive: Average Daily Volumes by Month

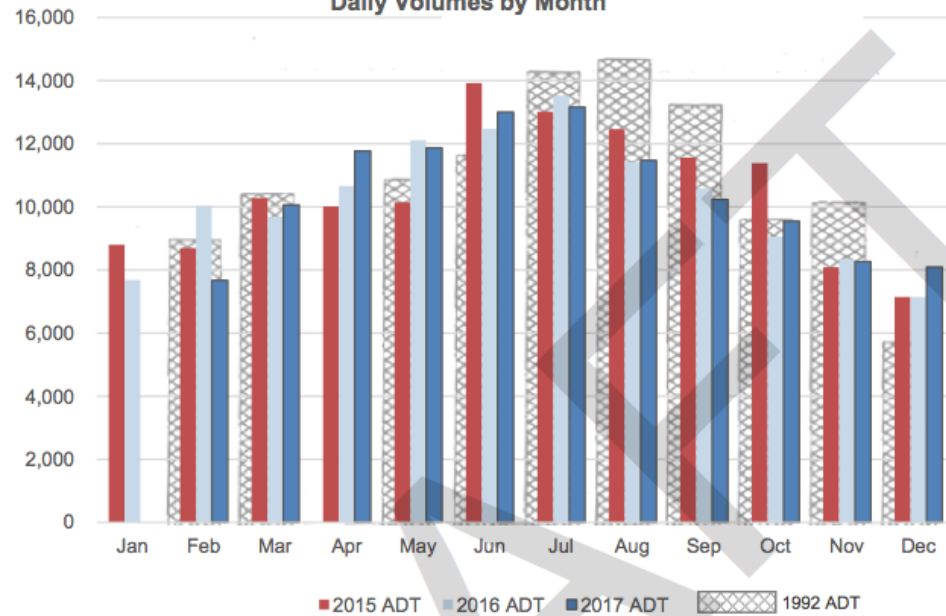
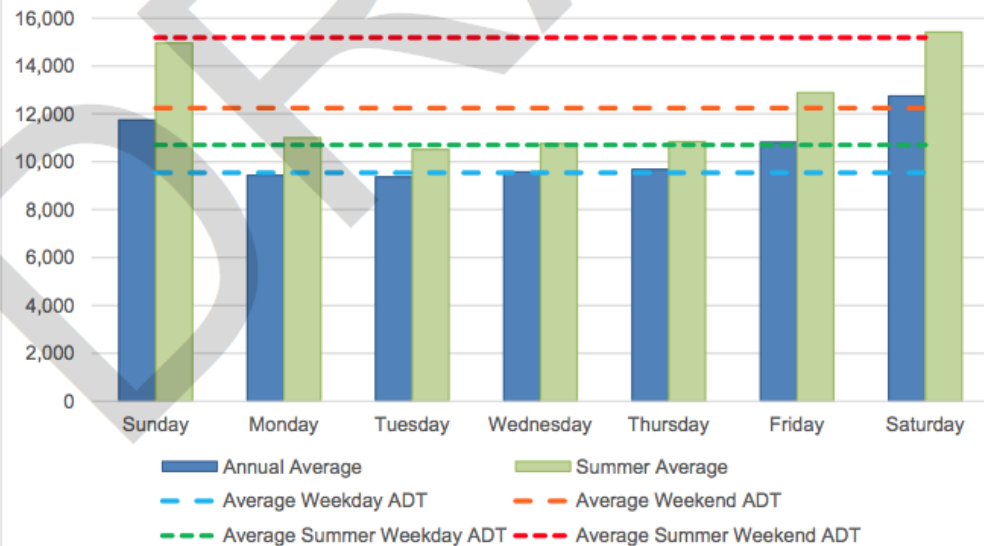


Figure 2 - Avila Beach Drive west of San Luis Bay Drive: Annual Average and Summer Average Daily Volumes by Day of Week





RECOMMENDATIONS

1. Conserve All Diablo Lands Including Wild Cherry Canyon

Urge PG&E and the PUC to oppose any action inconsistent with a conservation outcome – including: conveyance of fee title, sale of options, application for development permits, or zoning changes.

2. Ensure Public Access to the Diablo Lands Including WCC

Public access should be available in a manner consistent with protection of biological, cultural, and scenic resources and the needs of the nearby communities

3. Create the Diablo Lands Blue-Ribbon Conservation Panel

Convene team of community leaders and conservation organizations with the express purpose of working with PG&E and potential funding partners to implement a conservation and public access outcome.

