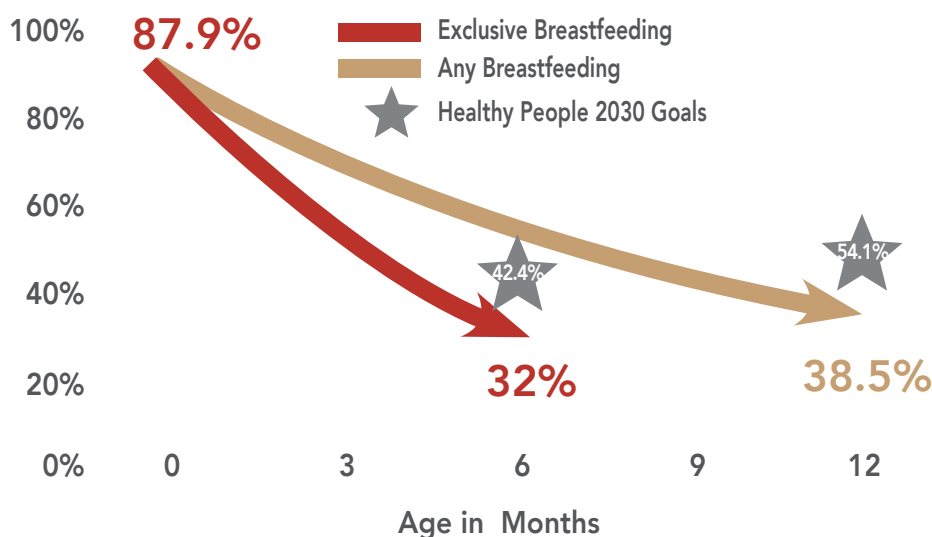


The State of Breastfeeding in Kansas



The
Cost of Low
Breastfeeding
Rates in Kansas is **HIGH**



(Source: CDC's National Immunization Survey, babies born 2018)

If 90% of Kansas babies
breastfed exclusively for six
months, each year **Kansas**
would save...



\$27 Million
medical costs



22
Maternal
deaths



7
Infant
deaths

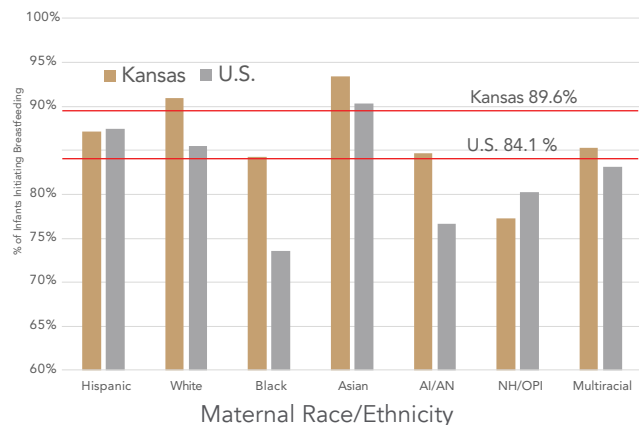
**Kansas now ranks 9th in the nation
for rates of infants exclusively
breastfeeding at 6 months.**

(Source: Breastfeeding Saves Lives Calculator,
www.usbreastfeeding.org/saving-calc, July 2021)



Not all families have the same choices

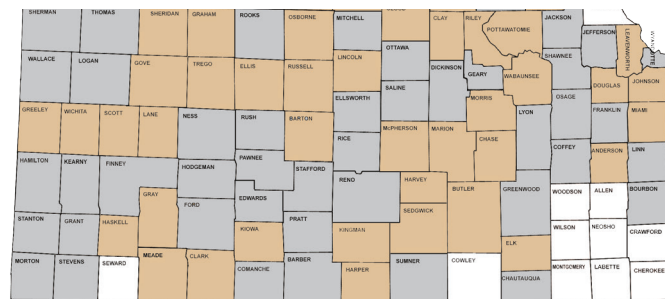
RACIAL AND ETHNIC INEQUITIES IN BREASTFEEDING INITIATION RATES



Abbreviations: AI/AN = American Indian/Alaska Native; NH/OPI = Native Hawaiian/Other Pacific Islander

(Source: Chiang, K., Li, R., Anstey, E., et al., Racial and Ethnic Disparities in Breastfeeding Initiation — United States, 2019. MMWR Morb Mortal Wkly Rep 2021;70:1-6.)

BREASTFEEDING INITIATION BY COUNTY OF RESIDENCE IN KANSAS 2017-2019*

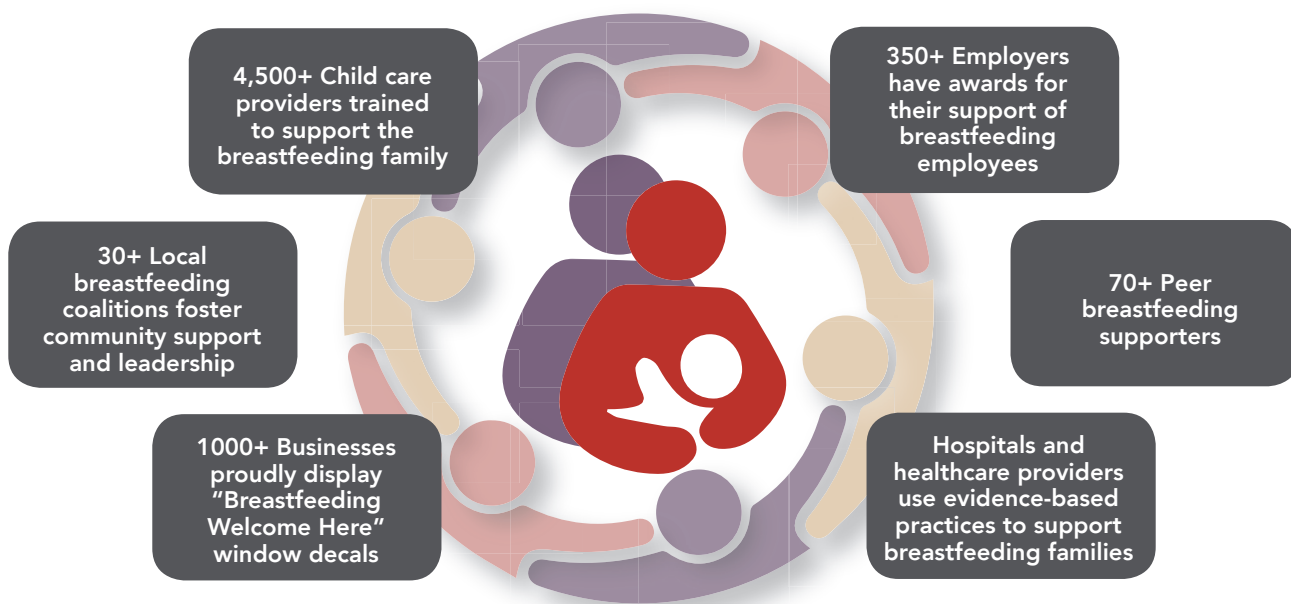


Percent: 72.8–80.0 80.1–88.7 88.8–97.6 **Kansas=88.7%**

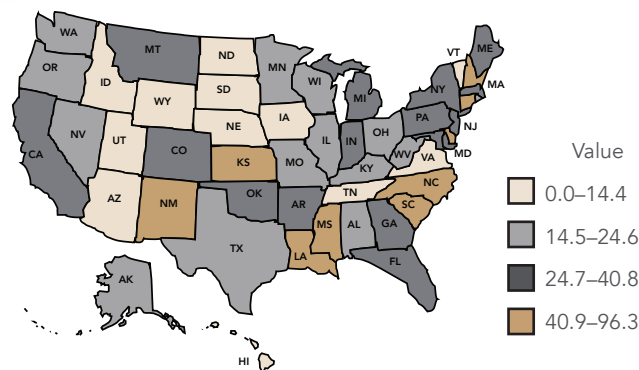
*Missing/unknown breastfeeding status and infants that died shortly after birth were excluded.

(Source: Kansas Department of Health and Environment. Bureau of Epidemiology and Public Health Informatics. Birth Certificate Data (Resident))

What allows some families to be able to choose to breastfeed?



KANSAS RANKS 8TH IN NATION!
51.5% of babies are born in baby-friendly hospitals compared to 29.1% nationally



(Source: Centers for Disease Control and Prevention. National Center for Chronic Disease Prevention and Health Promotion, Division of Nutrition, Physical Activity, and Obesity. Data, Trend and Maps [online]. [accessed Mar 27, 2021]. URL: <https://www.cdc.gov/nccdphp/dnpao/data-trends-maps/index.html>.)



Kansas
Breastfeeding
Coalition, Inc.



Learn more at ksbreastfeeding.org
or email info@ksbreastfeeding.org.

DONATE HERE

Publication date: 08/2021