

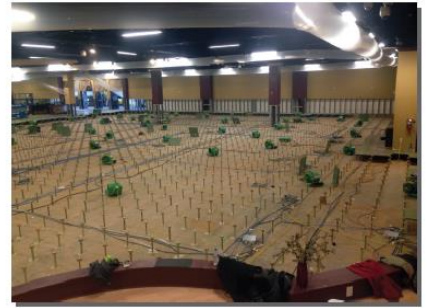
A woman in a dark blue SERVPRO uniform with a neon green reflective stripe on the shoulder is holding a tablet and showing it to a man in a grey suit and light blue checkered shirt. They are in an office setting with a drop ceiling and a desk in the background.

**SERVPRO®**

# Commercial Water Portfolio

*Franchises are Independently Owned and Operated*

- Industry: Hospitality & Entertainment.
- Structure: Whitehall Entertainment/Casino.
- Square Footage: 30,000+.
- Type of Loss: Freeze/Busted Pipe.
- Brief Scope: A sprinkler line connection froze and burst, flooding the vacant casino building. The main room had a raised panel flooring system with carpet squares glued to the raised floor panels with an extensive electrical component system on the concrete subfloor beneath, gypsum wallboard with batted insulation on the walls. SERVPRO® removed saturated cove base, drywall and wood trim, removed and discarded the carpet squares, then detached and manipulated the floor panels outside. SERVPRO® extracted the remaining water, treated and cleaned all affected areas. SERVPRO® removed the adhesive from 30,000 square feet of floor panels and stored the panels in the building.



- Industry: Hospitality & Entertainment.
- Structure: Adrienne Arsht Center/Miami-Dade County (Performing Arts Center), Miami, FL.
- Square Footage: 550,000+.
- Type of Loss: Water.
- Brief Scope: The performing arts center suffered water damage on all four levels and the air quality was compromised throughout the building. SERVPRO® provided stabilization and drying services, demolition and a thorough cleaning of the entire facility. Working around the clock, SERVPRO® completed the entire project within the timelines imposed by the county, city and facility management.



- Industry: Property Management & Multi-Family.
- Structure Location: LCG Pence/CCRC Building, Williston, ND.
- Square Footage: 130,000+.
- Type of Loss: Water.
- Brief Scope: The sprinkler system in the attic space of the structure burst and ran for approximately six hours. 60-70% of the building was affected by the water and a large portion of the structure sustained major damage when a portion collapsed within the structure from the 3rd floor to the ground floor. This was a building that was seven days from having its Grand Opening as housing for oil workers. SERVPRO® also provided the services of demo of sheetrock, flooring, ceilings, doors, hardware, mitigation and drying to the structure, cleaning moisture mapping, cleaning of all mechanicals such as air handling systems, building stabilization, etc.



Industry: Government.

Structure Location: Calhoun County Building.

Square Footage: 40,000+.

Type of Loss: Flood.

Brief Scope: Garden level of county building had 2" plug fail on four inch water supply pipe. Approximately fifty thousand gallons of water flooded virtually all office suites, restrooms, secure vaults, and public areas. SERVPRO® completed extensive water extraction, contents pack out of entire area and selective demolition. The vast majority of walls were wet plaster. SERVPRO® utilized paint removal of accumulated paint film of over 40 mils for dehumidification on over 50,000 sq. ft. of wall space. This saved customer both time and money by restoring instead of replacing. SERVPRO® also performed ACM remediation of over 10,000 sq. ft. of flooring and 400 linear ft. of pipe wrap.





- Industry: Healthcare.
- Structure Location: Boulder, Colorado.
- Square Footage: 152,000+.
- Type of Loss: Flood Damage.
- Brief Scope: This Retirement and Assisted Living Facility suffered significant damage in 4 buildings as well as complete flooding of (2) 12' high parking garages on the campus. SERVPRO® completed full demo, drying, cleaning and sanitization of all affected areas and had the facility ready for rebuild within three weeks of the event.



- Industry: Industrial.
- Structure Location: Westminster, Colorado.
- Square Footage: 18,000+.
- Type of Loss: Water Damage.
- Brief Scope: SERVPRO® was called in for emergency services at a commercial building that was heavily affected due to a 6" sprinkler riser break. The multi-tenant building was completely affected with water and muck from the broken pipe. Crews completed muck-out, extraction and drying services. Drying was complete in 6 days.



- Industry: Retail Shopping Mall.
- Structure Location: Rhode Island.
- Square Footage: 1,000,000.
- Type of Loss: Flood.
- Self-Pay or Carrier: Carrier.
- Brief Scope: SERVPRO® employed extraction, removal of drywall, insulation and application of antimicrobial treatments of ninety stores.

