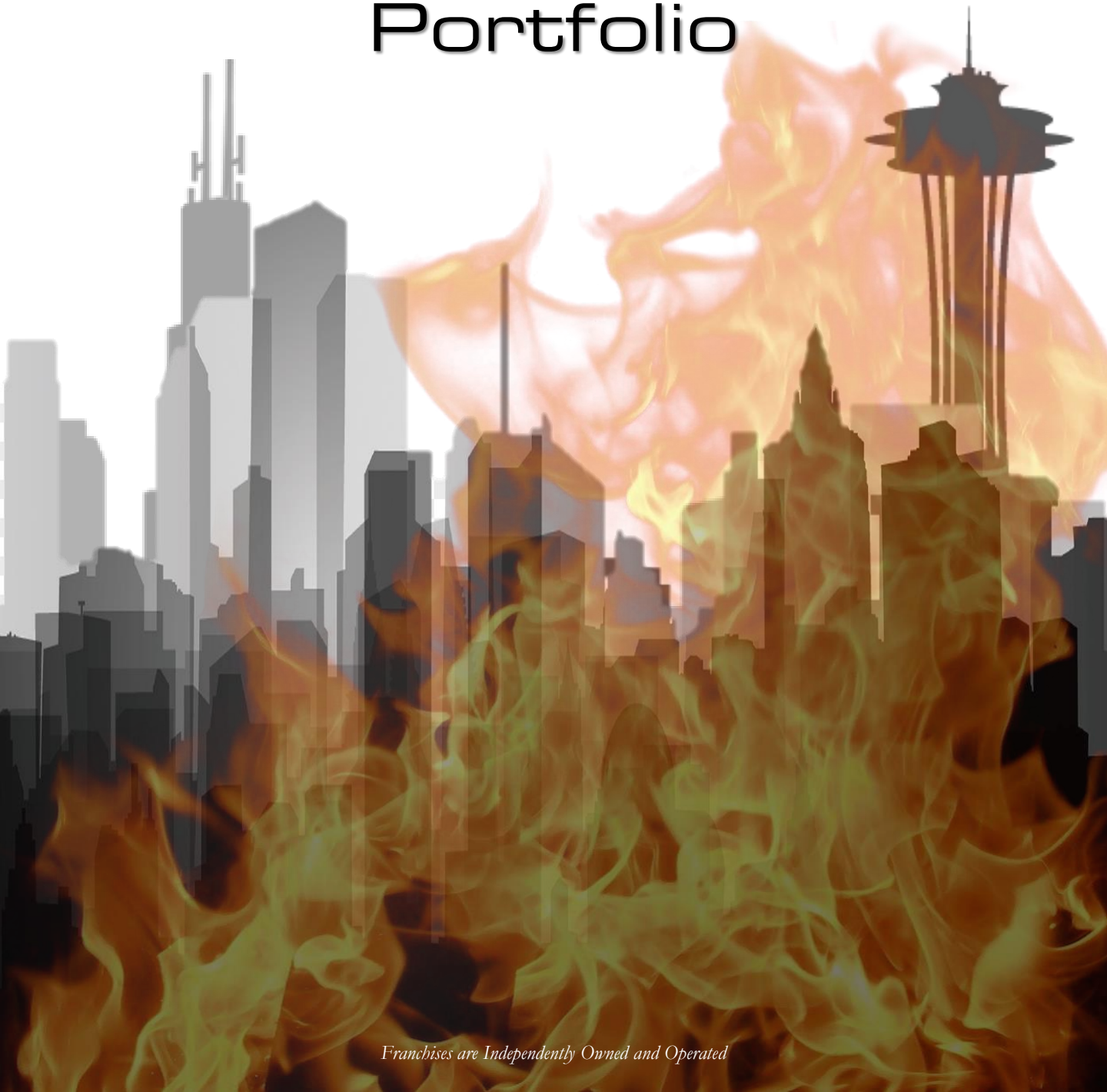




**SERVPRO®**

# Commercial Fire Portfolio

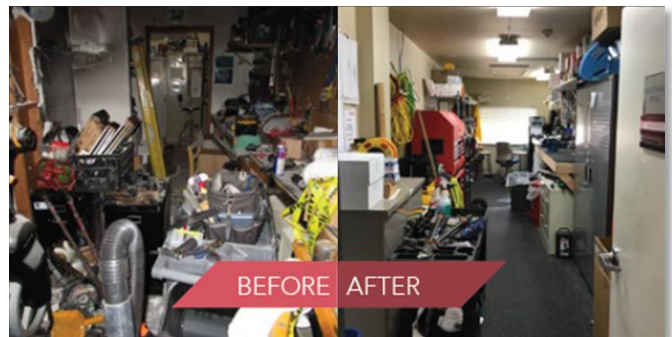
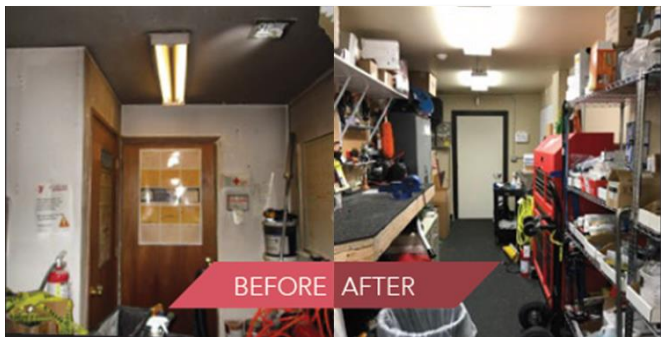


*Franchises are Independently Owned and Operated*

- Industry: Education
- Structure: School Stadium
- Square Footage: 29,348
- Type of Loss: Fire
- Brief Scope: Fire consumed the first aid room under the stadium and was contained to the room, but smoke and soot was pulled throughout the HVAC system and the entire building. Restrooms, locker rooms, equipment rooms, and concessions areas were covered in soot. With the upcoming Spring Sports season quickly approaching, timely action needed to be taken to get the stadium usable again. We cleaned the soot from all surfaces, rooms, stairwells and equipment. We worked with contractors to replace damaged ceilings, paint, and to clean and restore the HVAC system. Textile cleaners were used to clean affected uniforms. Working with a tight schedule, the stadium was ready for the start of the spring season.



- Industry: Healthcare
- Structure: YMCA, Everett, WA
- Square Footage: 40,000+
- Type of Loss: Fire
- Brief Scope: A faulty battery charger started a fire in the maintenance room. The fire itself only burned the maintenance room, but smoke and soot were pulled into the attic and throughout the building, affecting offices, bathrooms, the cardio and exercise rooms and the attic space. Most of the contents in the maintenance room were destroyed, but other contents of the building, including cardio and weight equipment, were cleaned and restored. All rooms were cleaned, as well as the HVAC system.



- Industry: Food Services
- Structure Location: Ore Ida Factory, Boise, ID
- Square Footage: 150,000+
- Type of Loss: Fire
- Brief Scope: A fire was caused by an overhead light fixture the day before Christmas and the sprinkler system just so happened to be out of service. All SERVPRO® management mobilized on Christmas day to meet AON, Crawford, Young and Associates, and Heinz staff to develop the plan. The client was losing \$800,000 per day in business interruption. We worked 24 hours a day with over 150 techs to get them back open. We worked alongside the Union work force to complete the restoration. Scaffolding was built throughout the facility and articulating lifts were used to dry ice blast the structure. SERVPRO® set up and moved negative pressure systems to aid in the reconstruction services of the badly burned areas as not to cross contaminate after the cleaning was completed.



- Industry: Education
- Structure Location: Union College, Lincoln, NE
- Square Footage: 65,000+
- Type of Loss: Fire
- Brief Scope: This Seventh Day Adventist College in Lincoln suffered a small fire in the mechanical room in the basement, right next to the HVAC Supply to the entire building. Smoke and soot spread to all six floors through the open plenums. All ceiling grids were removed and replaced and all items within the building were fully cleaned and deodorized.





- Industry: Food Services
- Structure Location: Greeley, Colorado
- Square Footage: 42,000+
- Type of Loss: Fire
- Brief Scope: A fire occurred at a newly built cheese processing factory in Greeley. SERVPRO® provided 75 people with around-the-clock work to get the facility cleaned and restored within the allotted time frame.



- Industry: Industrial
- Structure Location: Provo, Utah
- Square Footage: 8,000+
- Type of Loss: Fire
- Brief Scope: A burner malfunctioned in this testing facility causing smoke and soot damage throughout the single story building. SERVPRO® was called in and provided fire cleanup, drying and deodorization services to the building.



- Industry: Healthcare
- Structure Location: Albany, Georgia
- Square Footage: 100,000
- Type of Loss: Fire
- Brief Scope: A senior living center experienced a tenant fire which caused significant damage to the immediate area and smoke damage throughout the structure. SERVPRO® provided emergency response to extract, treat, dry and clean the structure.

