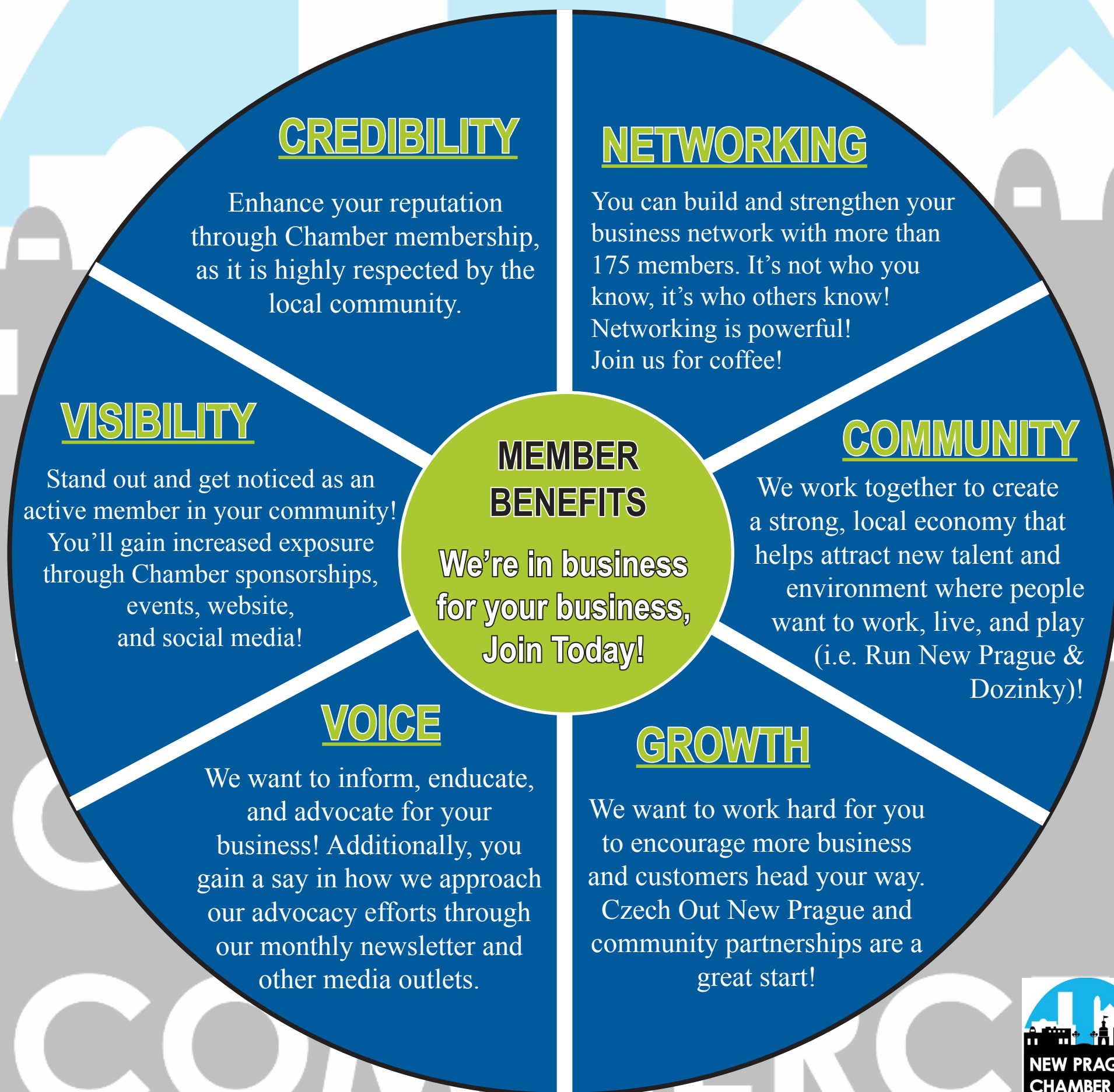


# WHY JOIN THE CHAMBER?

The New Prague Chamber of Commerce is here to help you engage, influence, and make an impact using dynamic programs, services, and initiatives designed with business success in mind. Consider taking advantage of these opportunities!





# Membership Benefits

## Upon initially joining:

- Immediately listed on Chamber's website – alphabetically and categorically
- Direct link to your website – with tracking of hits
- What's Hot Wednesday email blast

## Official Welcome / Ribbon Cutting:

- Picture of event printed in Chamber newsletter and posted on Facebook and Twitter
- Chamber news release sent to all local papers
- Ribbon cutting can be done for new businesses and for current members who have relocated, remodeled, or re-organized

## NPCOC's monthly newsletter:

- Offers local news pertaining to business community of New Prague
- Calendar of events keeps the business community informed of the Chamber's upcoming events
- Contains information regarding the Chamber, its members and relevant news
- \***Member News** – Short announcement to convey information about your business. Chamber members are encouraged to submit notices of accomplishments, upcoming events, or other info that would be relevant to Chamber membership.
- \***Business Spotlight** – Every week we will highlight a new member business on the front page of our website. This will also be noted in our monthly newsletter.

## Referral Postcards

- On a daily basis the Chamber office receives phone calls and emails requesting information about local businesses. We offer that information for all member businesses. We then mail a postcard to you to let you know that we have given your business a referral.

# Advertising Opportunities:

## New Prague Czechs

- Exclusive to Chamber members
- Redeemable ONLY at participating Chamber businesses
- List of participating businesses included with each Czech sold

## Welcome to New Prague Packets:

- Welcome packets are given to all new residents to New Prague
- Chamber members provide 50 items to be included in welcome packet  
Example: business cards, promotional items, brochures and coupons
- You will be contacted when your supply runs low

## Business to Business Packets:

- Packets given to new businesses opening in New Prague or new businesses joining the Chamber
- Chamber businesses that cater to other businesses are invited to provide information for the packet.  
Examples: business cards, flyers, brochures, catalogs or any other pertinent information
- You will be contacted when your supply runs low
- Only businesses and incentives offered to other businesses will be included

## **Sponsorship Opportunities:**

During the year, events occur that provide sponsorship opportunities to Chamber members. Events may vary from year to year.

### **Run New Prague Half Marathon, 10K, 5K and Kids Fun Run**

- Annual event held every May
- Be an event sponsor
- Donate items for goodie bags
- Volunteer to work a shift at event
- Main sponsors listed on event t-shirt, banners, Run New Prague website, ads in local paper, free entries in race

### **Dozinky Festival and Classic Car Cruise**

- Annual event held every September
- Sponsor a specific event at the festival
- Be an event sponsor
- Volunteer to work a shift in the Chamber booth or beer garden

### **Czech Out New Prague**

- Annual event held the first Thursday of August
- Business and Community Expo
- Have a booth for your business

### **Misc. Events**

## **Networking Opportunities:**

### **Coffee and Kolacky**

- Held monthly on the 3<sup>rd</sup> Wednesday every month
- Chamber businesses may host
- Chamber members and guests may attend

### **Annual Meeting**

- Held in January
- Display space for your business
- Member acknowledgement

### **Lunch & Learn**

- Quarterly
- Lunch provided
- Learn about topics relevant to your business

### **Member BBQ**

- Thank you event for members

## **Volunteer at events**

## **Additional Benefits:**

### **What's Hot Wednesday?**

- A weekly Constant Contact email blast is sent every Wednesday to all Chamber members
- Members ONLY may submit their flyer/information no later than Noon on Wed. for inclusion

### **Mailing Labels / Directory of Chamber members**

- Chamber mailing list is available ONLY to chamber members as:
  - \*An Excel spreadsheet
  - \*Master for mailing labels
  - \*Printed labels

### **Copies / Faxes**

- Have copies made at a reduced cost
- Faxes sent at a reduced cost for members

### **Certificate of Origin**

### **Foreign Trade Forms**

### **CORE BENEFITS**

- Creating a strong local economy**
- Representing the interests of business with government**
- Networking Opportunities**
- Promoting the Community**

---

For more detailed information contact a Chamber staff member:

Executive Director, Brooke Sticha - [bsticha@newprague.com](mailto:bsticha@newprague.com)