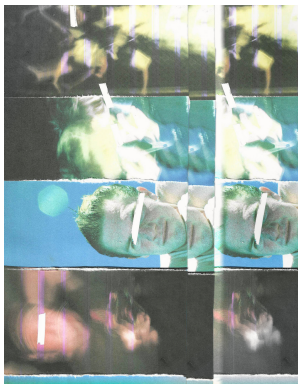




November 2020

Saint Mary's College of California GRID Art Club "Human Conditional"

The Saint Mary's College of California GRID Art Club leadership presents a multifaceted exploration into the roles of human beings as fosterers of subjective realities. Human function relies on our relation to and recognizability of our environments that create the perception of truth. Without these grounding points, we are forced to reconfigure our realities based on subjective fundamental beliefs, whether these emerge from earthly, fantastical, or other-worldly origins. Through a combination of painting, photography, sculpture, digital art, and video, six artists explore the roles of human beings in relation to the human condition.



Featured Artists:

Caed Folkestad
Carly Hodes
K. Isaac Kim
Sierra Miller
Amanda Moser
Sydney Toland



Artwork (From Top Left): Caed Folkestad, "Before and After", photography/mixed media collage; Carly Hodes, "Three Legs Watches TV", acrylic on canvas; K. Isaac Kim, "What You Gonna Do When the Grid Comes Down", acrylic on canvas; Sydney Toland, "Keep the Secret", digital art; Sierra Miller, "Connections" digital art; Amanda Moser, "Untitled" (Loved Ones in Big Sur Series), photography.

View the St. Mary's College of California GRID exhibition at the Art Gallery at Wilder - Virtual Gallery at LamorindaARTS.org/Wilder. Questions please contact the curator at wildergallery@lamorindaarts.org.

