



DEWBERRY FACULTY ARTIST SERIES

Dr. Eunae Ko Han & Friends

Featuring:

Eunae Ko Han, piano

Gene Galvin, bass baritone

Min Jin, tenor

K. M. Bae, oboe

Hyunji Choi, cello

Sunday, February 19, 2023

7:00 PM

Harris Theatre

PROGRAM

With Eunae Ko Han, piano

Oboe Concerto in C Minor

Benedetto Marcello

I. Allegro moderato

II. Adagio

III. Allegro

K. M. Bae, oboe

Lieder

Franz Schubert

"Du bist die Ruh" D.776

"Seiligkeit" D.433

"Der Lindenbaum" from Winterreise, D.911

Gene Galvin, bass baritone

Lieder

Richard Strauss

"Ach Lieb, ich muß nun scheiden", Op. 21, No. 3

"Allerseelen", Op. 10, No. 8

"Zueignung", Op. 10, No. 1

Min Jin, tenor

Intermission

Leaning on Time (Korean Art Song)

Jin Choi

Min Jin, tenor

K. M. Bae, oboe

Hyunji Choi, cello

Don Quichote à Dulcinée

Maurice Ravel

1. Chanson Romanesque

2. Chanson épique

3. Chanson à boire

Gene Galvin, bass baritone

"Nachtgesang" from 8 Pieces for Trio

Max Bruch

K. M. Bae, oboe

Hyunji Choi, cello

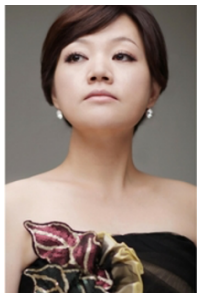
"Un dì all'azzurro spazio"

Umberto Giordano

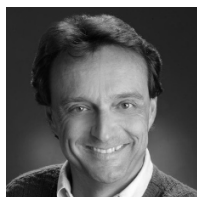
From "Andrea Chénier"

Min Jin, tenor

MEET THE FACULTY ARTISTS



Dr. Eunae Ko Han is an Assistant Professor in Collaborative Piano at George Mason University. Since 2014, Dr. Han has served as an opera coach and collaborative pianist in vocal studies at George Mason University. Currently, she is an artist faculty member in Collaborative Piano and focuses on performing and coaching for the vocal and instrumental areas. In addition, she organizes collaborative piano assignments within the Dewberry School of Music. Dr. Han received her D.M.A. in Collaborative Piano at the University of Maryland at College Park (UMCP), studying under Rita Sloan, who founded and directs the collaborative piano program at the Aspen Music Festival. Her doctoral dissertation was on innovations in French chamber music and melodie – through a collaborative pianist’s perspective - exploring the role of piano in accompaniment. Dr. Han also earned her Master of Music degree in Piano Performance from UMCP and her Bachelor of Music degree in Piano Performance from George Mason University. While studying at UMCP, she held positions as the pianist for the University Symphony Orchestra, the accompanist for the Chamber Singers and the Maryland choir, and the pianist coach for the UM Opera Studio. Additionally, Dr. Han received the McCoy Award for Collaborative Pianist and First Place in the Ulrich Competition at UMCP. She also received a rave review from the Washington Post for her performance of Mozart’s opera, *The Impresario*, at the Clarice Smith Performing Arts Center. As part of the “Songfest” in Malibu, California, under the tutelage of Martin Katz, she premiered pieces by distinguished composers including Jake Haggie and John Harbison. Dr. Han has extensive experience as an accompanist and a chamber musician, performing in numerous concerts and recitals throughout the United States, Korea, China, and Japan. She frequently plays in the U.S. Air Force Chamber Music Series recitals and has traveled abroad to perform with choral, vocal and instrumental chamber groups in Mexico, Thailand, Cuba, Costa Rica, Turkey, Kazakhstan, and Kyrgyzstan. She actively performs as a collaborative pianist for both vocal and instrumental recitals throughout the Greater Washington Metropolitan area, as well as in New York. In 2017, she founded the Kalos Trio (along with violinist Yoojin Baik and cellist Hyunji Choi) and organized the Benefits Concert for the Homeless at the historic New York Avenue Presbyterian Church in Washington, DC, performed Vivaldi’s *Four Seasons* as part of the Angel’s Concert Series at the Church of Holy City in Washington, DC, and performed Mendelssohn’s *Piano Trio No. 2* at Carnegie Hall in New York City.



Dr. Gene Galvin, bass-baritone, earned the BA in Music Education from Frostburg State University, the MM in Voice Performance from The Catholic University of America, and the DMA in Opera Performance from the University of Maryland at College Park, where he studied with Dominic Cossa. Dr. Galvin has served on the adjunct music faculties of Shenandoah Conservatory, West Virginia University, George Washington University, University of North Carolina at Chapel Hill, as well as The Catholic University of America, University of Maryland, and Frostburg State University. As an opera director, Dr. Galvin has staged his own translations of Donizetti's *Rita* and Viardot's *Cendrillon*. He has staged opera productions for the University of Maryland Opera Workshop, the UNC Opera, the Opera Theater of Northern Virginia, Belcantanti Opera, and The Catholic University of America opera. Additionally, he served as opera scenes director for the Amalfi Coast Music and Arts Festival in Maiori, Italy. Dr. Gene Galvin, Bass-Baritone, praised in *Opera News* for his "rich voice and superb musicianship," has sung with the Washington, Wolf Trap, Cleveland, Cincinnati, Sarasota and National Operas, Opera New England, Opera Theater of Northern Virginia, and Summer Opera Theater companies. He appeared at Constitution Hall as Sarastro in *Magic Flute* under the baton of Victor Borge, and as the title character in *Marriage of Figaro* with the New York Grand Opera. His roles also include Basilio, Don Giovanni, Colline, Dulcamara, Gremin, DeBecque and Pandolfe. He played Marshall opposite Patti Lupone in the Kennedy Center production of *Regina*, and created two roles in Wolf Trap Opera's critically acclaimed world premiere of John Musto's *Volpone*. Recent engagements include roles with Washington Concert Opera (*Alidoro*, *Quinault*), roles in Opera Lafayette's *Le Deserteur* (recorded on Naxos Records), Bartolo in Paisiello's *Il Barbiere di Siviglia*, and the title role of Gianni Schicchi with InSeries in Washington. He was recently seen in the NC HIP Music Festival, with Mallarmé Chamber Players, as Ariodate in Handel's *Serse*, and roles in NC Opera's *Hercules vs. Vampires* and *Le Nozze di Figaro*. On the concert stage, Dr. Galvin has performed with Ute Lemper and the National Symphony in Kurt Weill's *Seven Deadly Sins*, and with the Arlington Symphony and Williamsburg Symphonia. He was a regular featured performer in WMAL Radio's annual live Christmas concert from the Kennedy Center, and as bass soloist in the Kennedy Center's *Messiah Sing-Along*.

See the full listing of the Dewberry School of Music's wonderful faculty at music.gmu.edu/faculty-staff/

MEET THE GUEST ARTISTS



Kyungmi Bae is the founder and president of D Ensemble (NJ), a member of the renowned Korea Festival Ensemble. She previously served as the Principal oboist of the Kangnam Symphony Orchestra, as well as a professor at Sangmyung University in Seoul, South Korea. As a soloist, she made numerous appearances with leading orchestras throughout Korea, Tokyo, and the U.S. to include the Seoul Philharmonic Orchestra, Korean National Symphony Orchestra, KBS

Symphony Orchestra, Seoul Chamber Orchestra, Kangnam Symphony Orchestra, New York Korean Chamber Orchestra, Camerata Virtuosi New Jersey Chamber Orchestra, Tokyo Prime Symphony Orchestra and more. She performed at concerts in renowned venues such as the Carnegie Hall, United Nations, Korean Culture Center in New York City, Seoul Arts Center, Sejong Arts Center, LG Arts Center, Gyeong-Ju Arts Center, Busan Arts Center, Bergen Performing Art Center (NJ), and Studio Theater (Washington D.C.). She studied Doctor of Musical Arts at Catholic University of America in Washington D.C., received her Bachelor of Music degree at Seoul National University, and her Master of Music degree at Mannes College of Music in New York City. She won number of competitions in Korea including the prestigious – Donga Daily News Competition. To this day, she is the only one to be awarded with the first prize twice (one in solo oboe and the other in chamber music). Later, she served as a jury member of Donga Daily News Competition and Busan Music Concours. Upon receiving her bachelor's degree, she was featured as the rising star of the year by Chosun Daily News and KBS (Korean Broadcasting System). She then joined Korean National Symphony Orchestra and contemporary ensemble, Sori. Since then, she has been teaching oboe and chamber music at universities and arts schools throughout Korea, including Yonsei University, Seokyeong University, Kookmin University, Dongduk Womens University, HyupSung University as well as Yewon School and Seoul Arts High School. As a president of D Ensemble, she coordinated and performed in events at United Nations for CRPD (The Committee on the Rights of Persons with Disabilities), directed various concert series in New York tri-state area and gave lectures at the Korean Community Center and AWCA. She also writes articles as a commentator for the Korean Daily Newspaper. In 2022, she has been a featured soloist in J.S. Bach Double Concerto with Kalos Ensemble as well as in local PBS broadcast of Songs and Stories in Virginia. She performs for benefit concerts for the homeless at the Historic New York Avenue Presbyterian Church in Washington, DC, and performs with various ensembles such as Richmond Symphony Orchestra and Virginia Symphony Orchestra.



Tenor Dr. Min Jin has a versatile and wide-ranging career as a leading operatic tenor, recitalist, conductor, and voice professor. Praised for his easy lyricism, emotional intensity, and extraordinary top notes, Dr. Jin has delighted audiences with concert and opera performances throughout the United States, South America, Italy, Canada, and South Korea. He has appeared in many of the important concert venues in the United States such as Carnegie Hall and Lincoln Center as a recitalist, opera performer, as well as an oratorio soloist with

choral societies. His past opera performances include a leading role in *La Boheme*, *Lucia di Lammermoor*, *Romeo et Juliette*, *Carmen*, *L'elisir d'amore*, *Magic Flute*, *La Rondine*, *La Traviata*, *Tosca*, *Manon*, *Werther*, *A Midsummer Night's Dream*, *La Vera Costanza* and several others with New Jersey State Opera, Ann Arbor Opera, Aspen Opera, Rochester Mercury Opera, Dicapo Opera, Academic Opera, Mannes Opera, Eastman Opera, Grand Valley State University, Kwang Ju City Opera and PoHang City Opera. As an oratorio and chamber music soloist, he has been featured in *Carmina Burana* and Britten's *Serenade for Tenor, Horn, and Strings* with the Finger Lake Music Festival and the Grand Valley State University. Other featured solo engagements have included Haydn's *Creation*, *The Seasons*, Handel's *Messiah*, Mozart's *Coronation Mass*, *Requiem*, Dubois's *The Seven Last Word of Christ*, Mendelssohn's *St. Paul*, *Elijah*, Beethoven's *Missa Solemnis*, *Mass in C Major*, and his *Symphony No. 9*, *Frank's Mass in A Op. 12*, and *Schubert's Mass No. 2 in G*, *Mass in A-flat* among others with Rochester Philharmonic, New Jersey Philharmonic, Russian National Symphony, Yucatan Sinfonia, Geneseo Symphony, Toronto Sinfonia, Toronto Philharmonia, Grand Rapids Symphony, Bay Atlantic Symphony, Eastman Philharmonic, Palisades Orchestra, Texas BC Orchestra and Quad City Symphony. He was a first-prize winner of the Artist International Music Competition, the Korean Music Association Competition and a winner of the Heida Hermann International Voice Competition, the Oratorio Society Voice Competition, and the finalist in the Caruso International Voice Competition. He holds a Doctor of Musical Arts degree in Vocal Performance from the Eastman School of Music. As a music director, he currently serves at Bethel Church in Baltimore, Maryland and previously, he served as a principal conductor for the Washington Soloists Ensemble in Washington D. C., Tedeum Choir in Chicago and Central Wesleyan Church in Holland, Michigan. As a studio voice teacher, many of Dr. Jin's students are awarded at voice competitions, festivals and young artist programs at the national and international levels. Dr. Jin currently works as an Associate Professor of Voice at Towson University in Maryland. Previously, he has served on the faculty at the Grand Valley State University in Michigan.



Hyun Ji Choi, cello, enjoys a versatile career as a soloist, chamber musician, and orchestral player. She has been heard in venues as diverse as the Alice Tully Hall of the Lincoln Center, Weill Recital Hall at Carnegie Hall, and Smithsonian Museum in Washington D.C. to name a few. Her artistry has taken her to perform in South Korea, Japan, Canada, Mexico, and Argentina as a soloist and a chamber musician. While living in Chicago, she performed a wide selection of solo cello and chamber music repertoires as a member of Apas Duo/Trio, appearing as

a frequent and regular guest in many of the recital series and educational programs for public libraries, hospitals, and community centers in the region. She was a member of the Grand Rapids Symphony in Michigan and now appears as a guest musician for the Baltimore Symphony Orchestra. A native of Seoul, S. Korea, Hyun Ji earned her bachelor's degree from the Juilliard School and her master's degree from the Eastman School of Music. She has participated in the Saugatuck Music Festival, Pacific Music Festival, National Orchestral Institute, Toronto Music Festival, Aspen Music Festival, and Killington Music Festival. She performs regularly in the Washington metropolitan area with her piano trio, Trio Kalos. She is a cello faculty member at the Peabody Preparatory of the Johns Hopkins University.

DEWBERRY SCHOOL OF MUSIC

SPRING 2023 FACULTY ARTIST SERIES

Sunday, January 29
3:00 PM

Kathleen Mulcahy, clarinet
Jonathan Bisesi, percussion
John Spirtas, percussion
Kanakano Chikami, percussion
Shane Nickels, percussion

Sunday, February 19
3:00 PM

Original Works by
Composition Faculty
Robert Gillam, Jesse Guessford,
John Jansen, Michael Nickens,
Glenn Smith

Sunday, February 5
7:00 PM

Kerry Wilkerson, bass-baritone

Sunday, February 19
7:00 PM

Eunae Ko Han, pianist
and Friends

Sunday, February 26
7:00 PM

Julianna Nickel, flute
Dennis Edelbrock, trumpet
David Porter, tuba

Free and open to the public

George Mason University School of Music

For more information and a complete listing of concerts and recitals, visit the
web site at music.gmu.edu

George Mason University is a registered All-Steinway School

