

Mark Story

The Problem

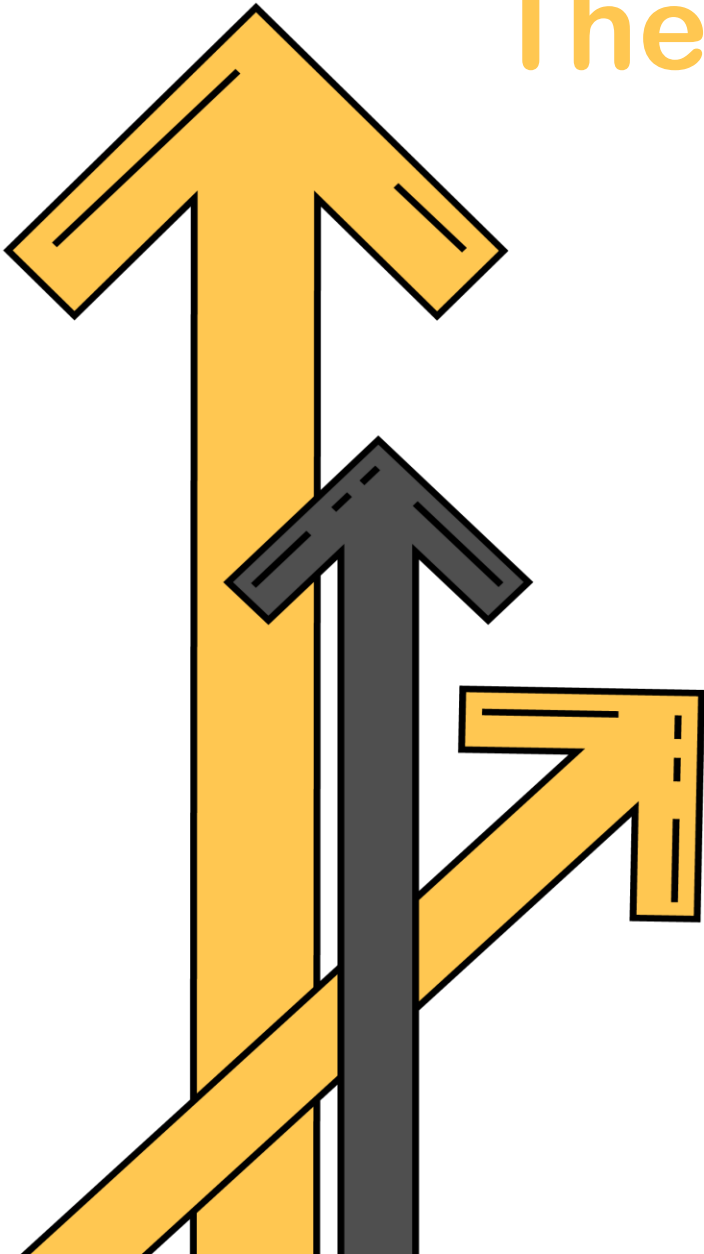
Age Range (% Population - 2017 ACS)



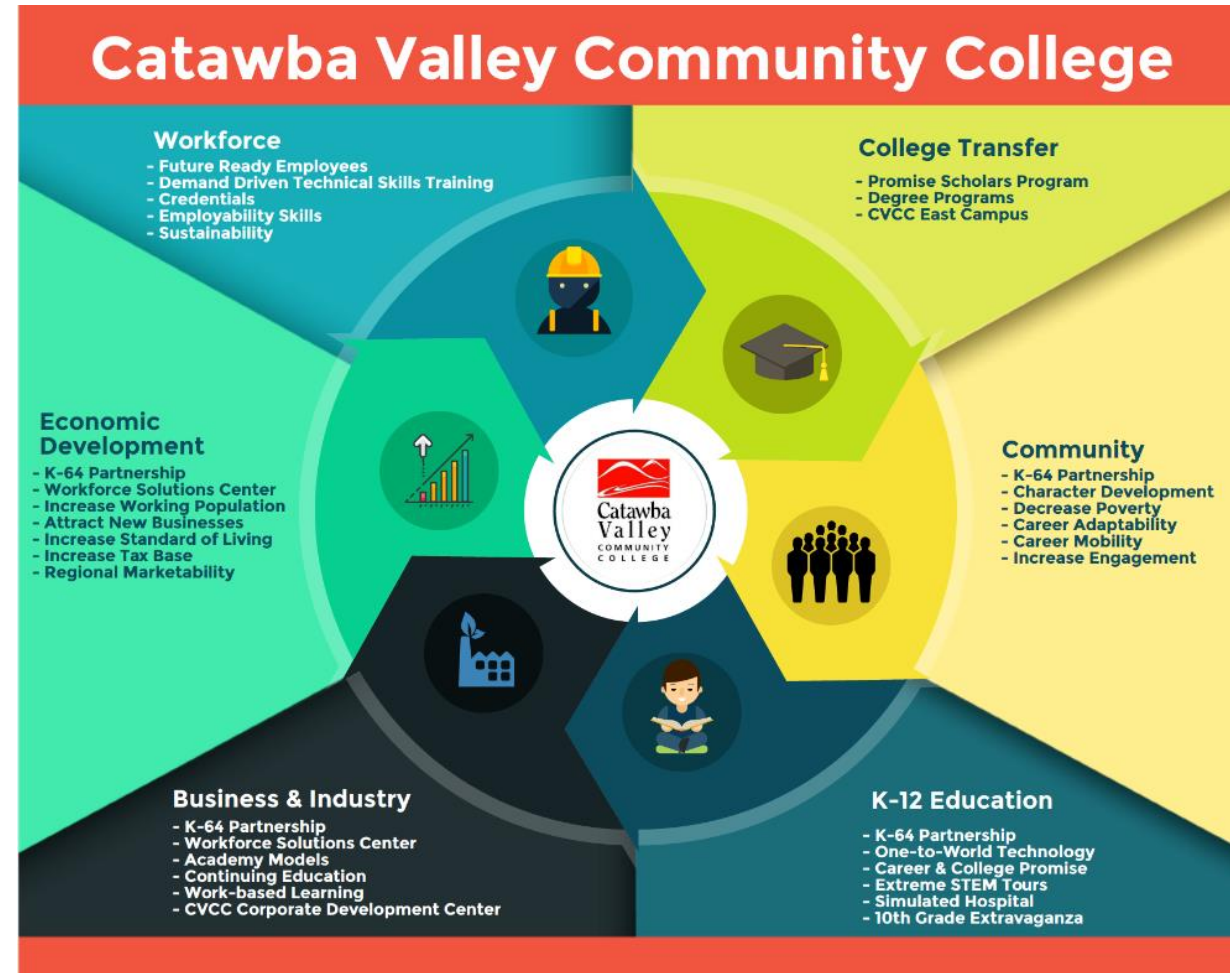
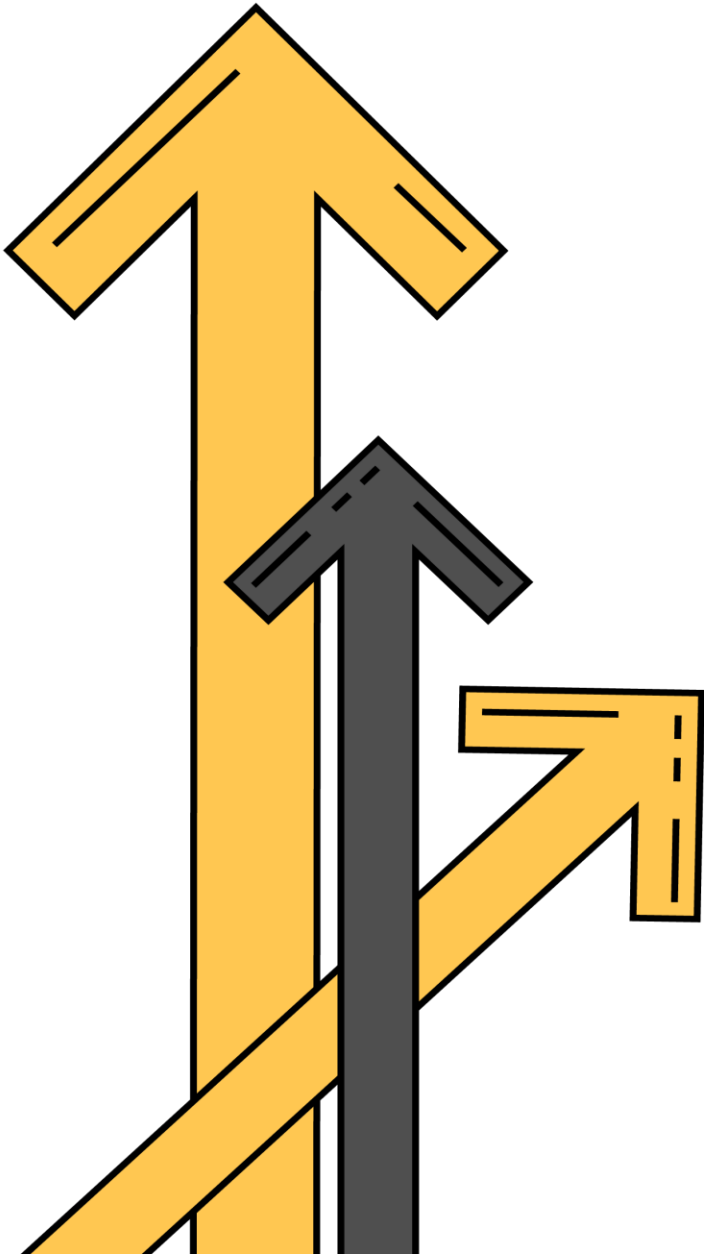
Education Levels

	Catawba County
Less than High School	16.6
High School Graduate	30.5
Some College	21.1
Associate Degree	10.2
Bachelor's Degree	14.7
Master's Degree or Higher	6.9

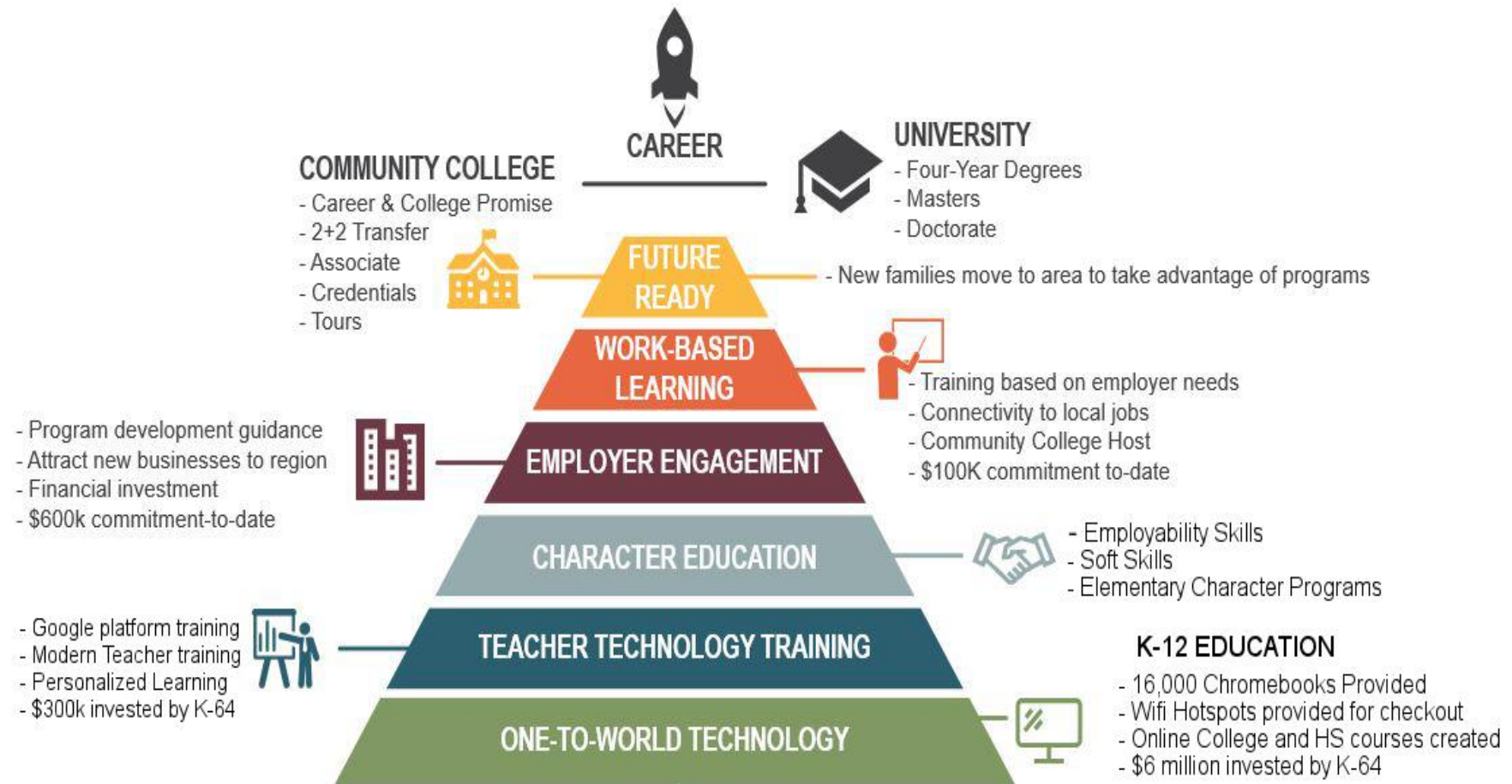
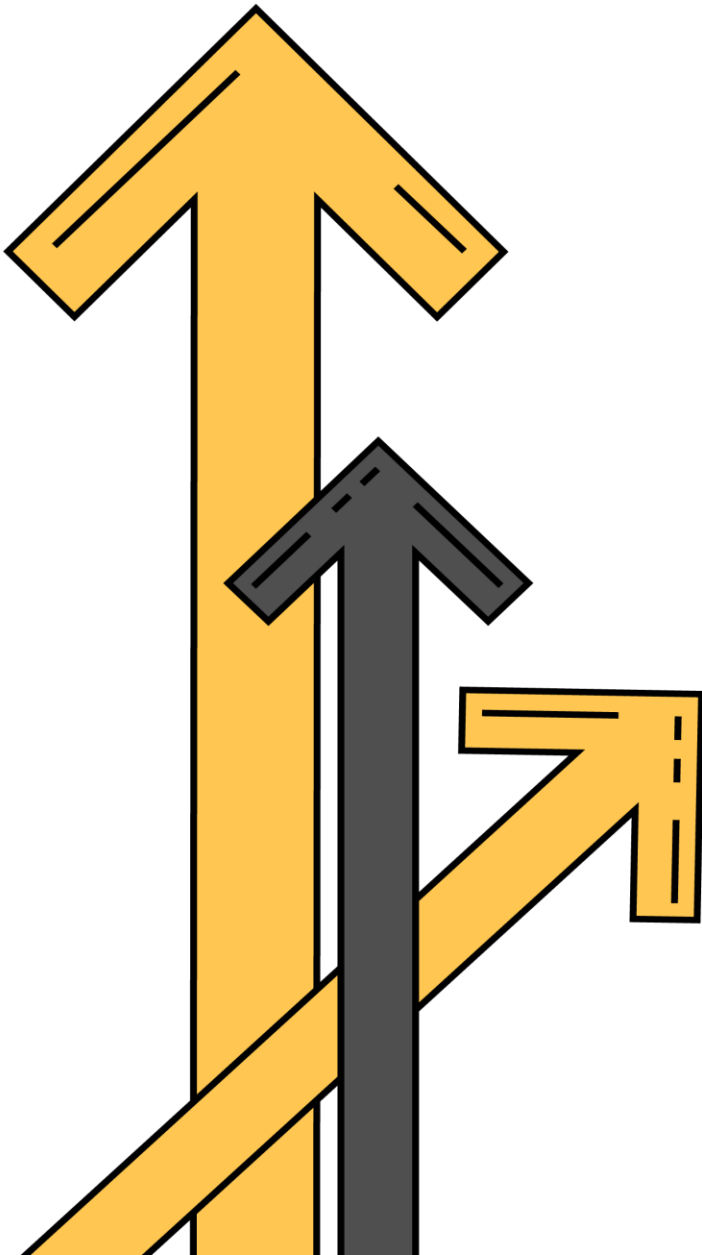
The Impact

- 
- Shrinking Local Workforce
 - 3,000 Unfilled Jobs
 - Local Skills Shortage For Available Jobs
 - No Business Expansion
 - Lower Performing K-12 Schools

Innovation Overview



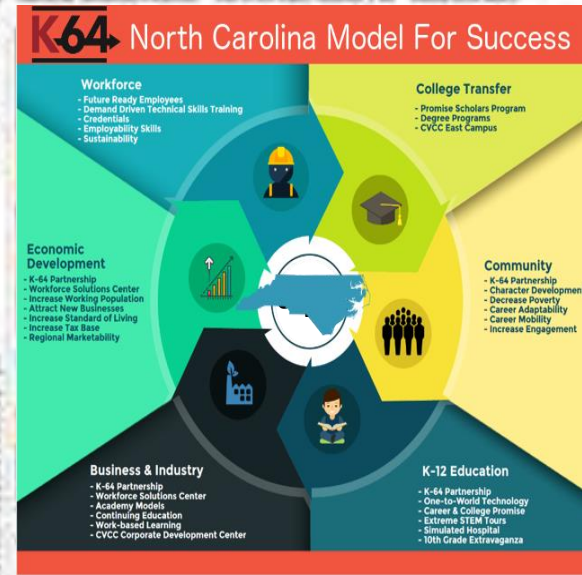
Innovation Overview



DAILY NEWS

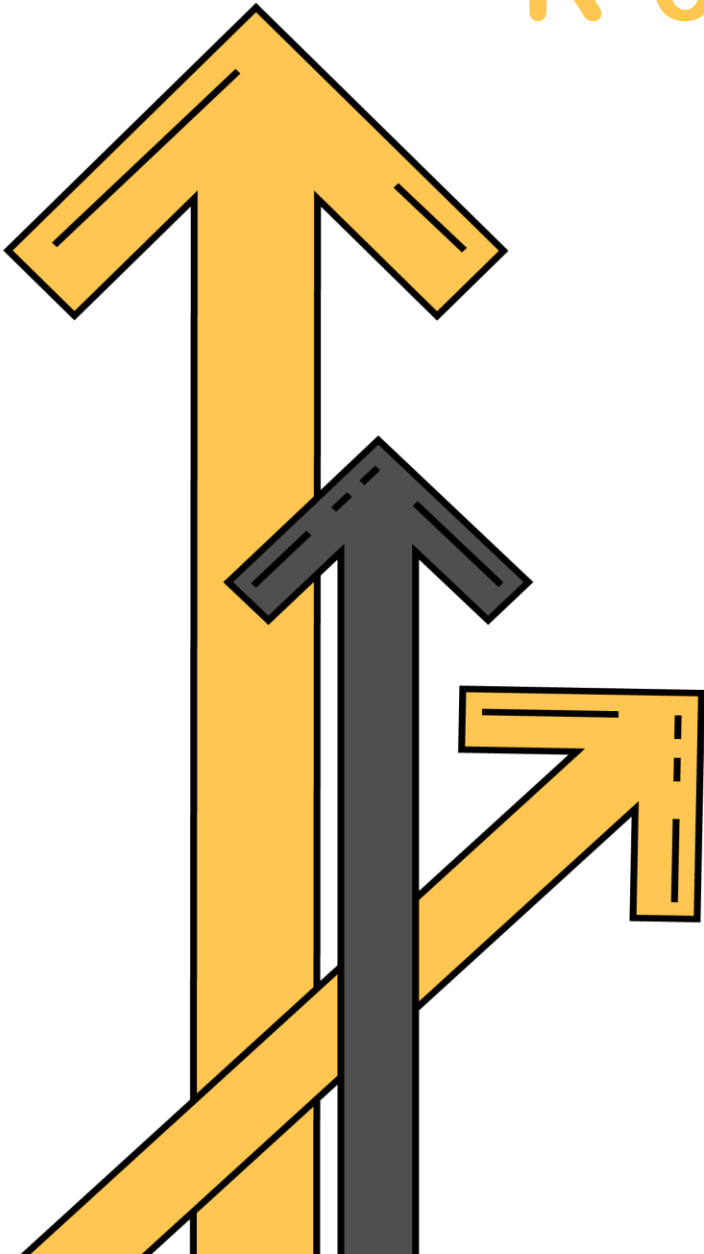
K-64 Drives Local Economy

K-64 proves education can drive economic development on the local level.



K-64 Drives Local Economy

(Requirements for Success)



- Collaboration
 - Local
 - Regional
 - State
- Partnerships
 - Businesses
 - Educational Entities
 - Government
- Funding
 - Local
 - State
 - Industry