

CACHE

The Center to Advance Community Health & Equity



Twitter: @CACHEcenter

www.thecachecenter.org

www.communitybenefitinsight.org

Welcome & Introductions



Kevin Barnett
Co-PI and Senior
Investigator



Sue Grinnell
Co-PI and Director
Population Health
Innovation Lab



Eliza Love
Lead Technical
Assistance Analyst



Stephanie Sario
Program Manager

What is CACHE?

Tapping years of national leadership, the **Center to Advance Community Health & Equity** introduces a set of tools and technical assistance to advance health and well-being in communities across the nation, particularly where health inequities are concentrated.



What is our GOAL?

Advance community health and well-being, particularly in communities with social, economic and health inequities.



CACHE Core Principles



Two Part Approach

Community Benefit Insight Tool (CBI)

Housed at RTI International

Online, interactive resource that makes data from tax-exempt hospitals about investments in their communities more accessible



Center to Advance Community Health & Equity (CACHE)

Housed at PHI

Provide technical assistance for stakeholders navigating strategic community benefit implementation and fostering collaborative solutions.



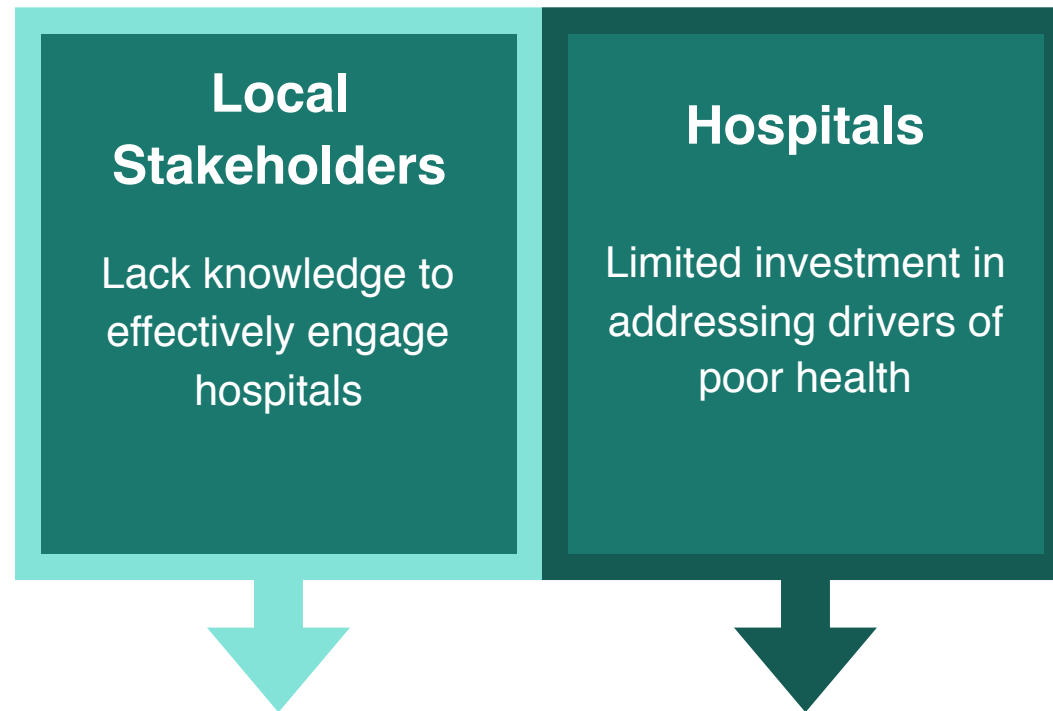


Used as an entry point for stakeholders interested in how tax-exempt hospitals and health systems optimally fulfill their charitable obligations

Ensure tools and resources are optimally designed for variety of users, assist in interpretation of data, facilitate strategic conversations

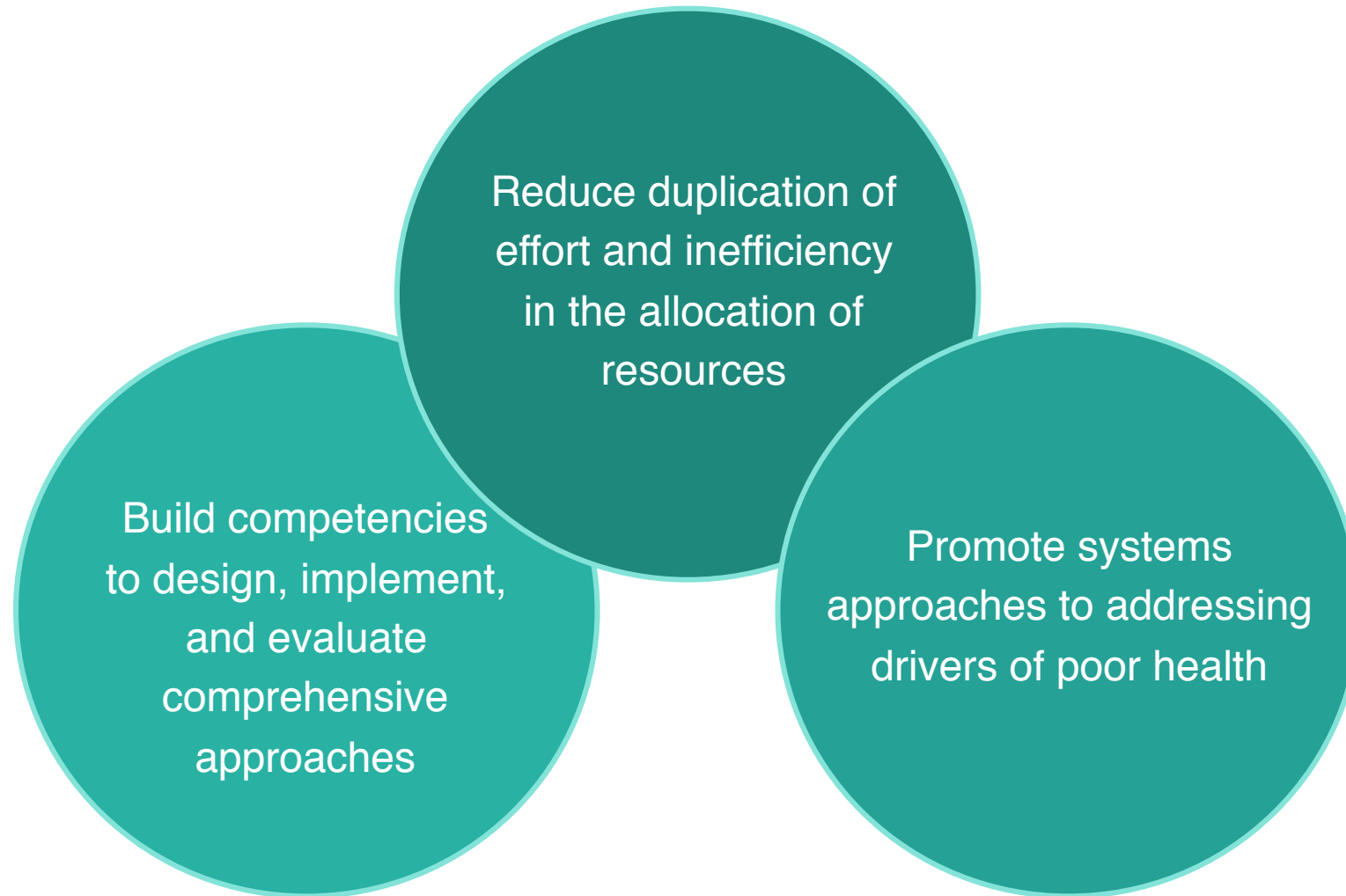


Entry Point Issues

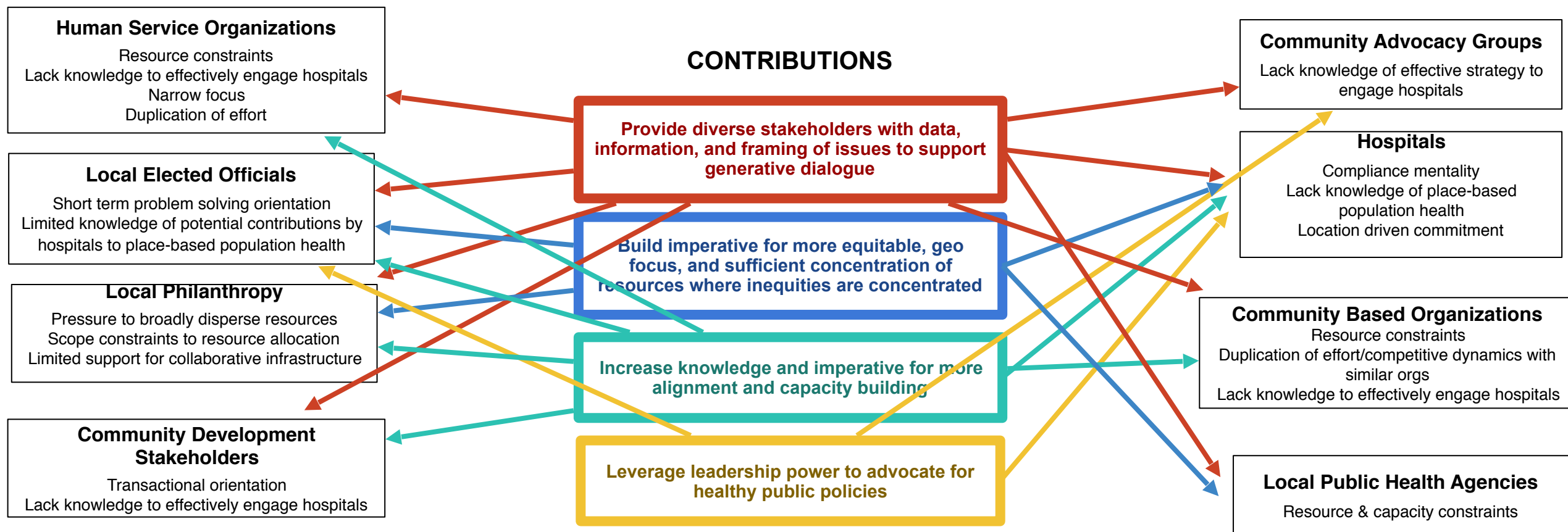


The potential for hospital community benefit to contribute to improved health is not being fully realized.

Shifting the Approach



Needs & Contributions Map



Initial CACHE Service Offerings

General Technical Assistance and Support:

- Online support for use of CBI tool
- Tools and resources to support use of CBI tool
- Public Webinars
- General Education - Blog Posts, Newsletters (events, news, announcements)

Specialized Technical Assistance:

- Design analyses and interpret findings (e.g. comprehensive health improvement strategies)
- Partnerships with regional stakeholders
- Onsite technical assistance
- Presentations (e.g. governing bodies, public meetings, conferences)
- Convenings (e.g. facilitating planning processes)

Community Benefit Insight

Short Demo



Next Steps: Potential Analyses

1) **Identify** capacity, resources, and priorities.

- > Tax-Exempt Hospitals (IRS reporting, CHNAs, implementation strategies)
- > Other Health Sector Stakeholders (public health, FQHCs, public clinics)
- > Community Development Stakeholders
- > Local Government (county, municipal, and state related expenditures, plans, and infrastructure)
- > Local Philanthropy

2) **Analyze** content, geographic focus, and priorities for alignment and current duplication of effort.

- > Analyses of hospital utilization data with focus in areas such as PQI
- > Community development investment opportunities that address health priorities
- > GIS analyses of SDoH, demographic data, and other relevant information

3) **Co-Design** strategies for effective investment and allocation of resources.

Complementary Resources

Community Commons
Toolkit



Community Health
Improvement Navigator



HealthLandscape &
UDS Mapper



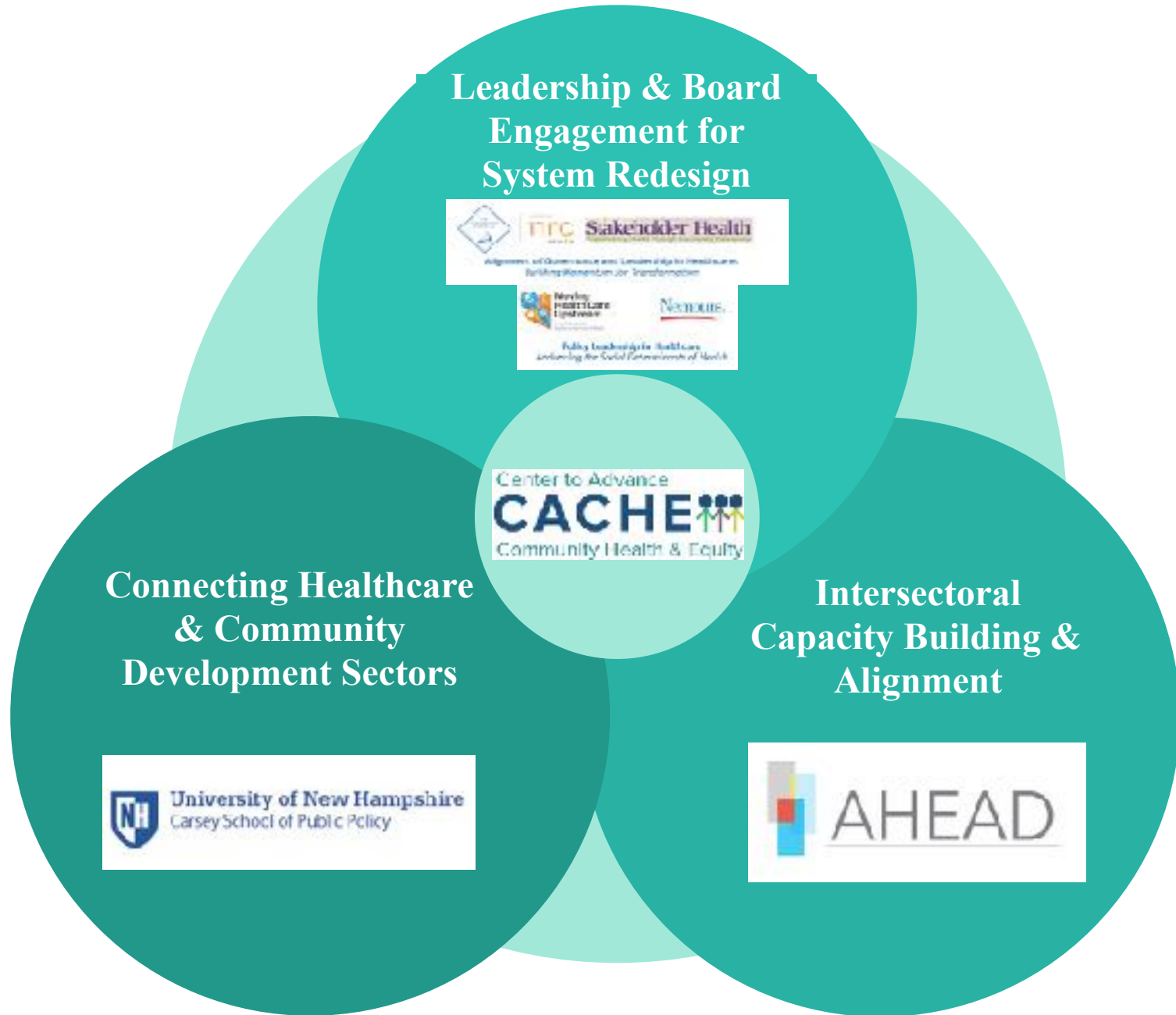
County Health
Rankings & Roadmaps

Building a Culture of Health, County by County

- 1) Analysis of Community Benefit financial allocations
- 2) Analysis of CHNA and Implementation Strategies: Identify prioritization of geographic areas with concentrated inequities.
- 3) GIS analysis: Identify concentrations of inequities.

Research Topic	Clinical Investigation (%)	Health Professions Education (%)	Clinical Prevention (%)
Academic Medicine (General)	60%	20%	20%
Academic & Clinical, Pediatrics	70%	0%	0%
Academic & Clinical, Pediatrics, Health Professions Education	67%	3%	30%
Academic & Clinical, Pediatrics, Health Professions Education, Clinical Prevention	69%	0%	31%
Academic & Clinical, Pediatrics, Health Professions Education, Clinical Prevention, Health Professions Education	68%	0%	32%
Academic & Clinical, Pediatrics, Health Professions Education, Clinical Prevention, Health Professions Education, Clinical Prevention	69%	0%	31%

[illegible]



Thank you!

For questions or comments, you can email
us at CACHE@phi.org

Twitter: @CACHEcenter

www.thecachecenter.org

www.communitybenefitinsight.org