



1200 Wilmette Road
 Wilmette, Illinois 60091
 Phone: 847-256-6100

PROJECT
**West Park
 Berm and
 Landscape
 Renovations**

PROJECT TEAM



uplandDesign Ltd

Landscape Architecture & Park Planning
 1229 N. North Branch St., Chicago, Illinois 60642
 24042 Lockport St, Plainfield, Illinois 60544
 815-254-0091 www.uplandDesign.com

SURVEYOR

Gewalt Hamilton Associates, INC.
 625 Forest Edge Drive
 Vernon Hills, Illinois 60061
 Phone: 847-478-9700

REVISIONS

MB/DW	VILLAGE REVIEW	DATE
		09SEP2022

PROJECT NUMBER

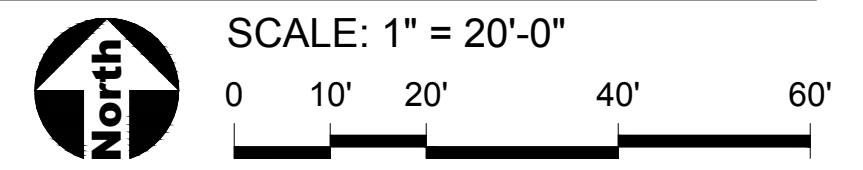
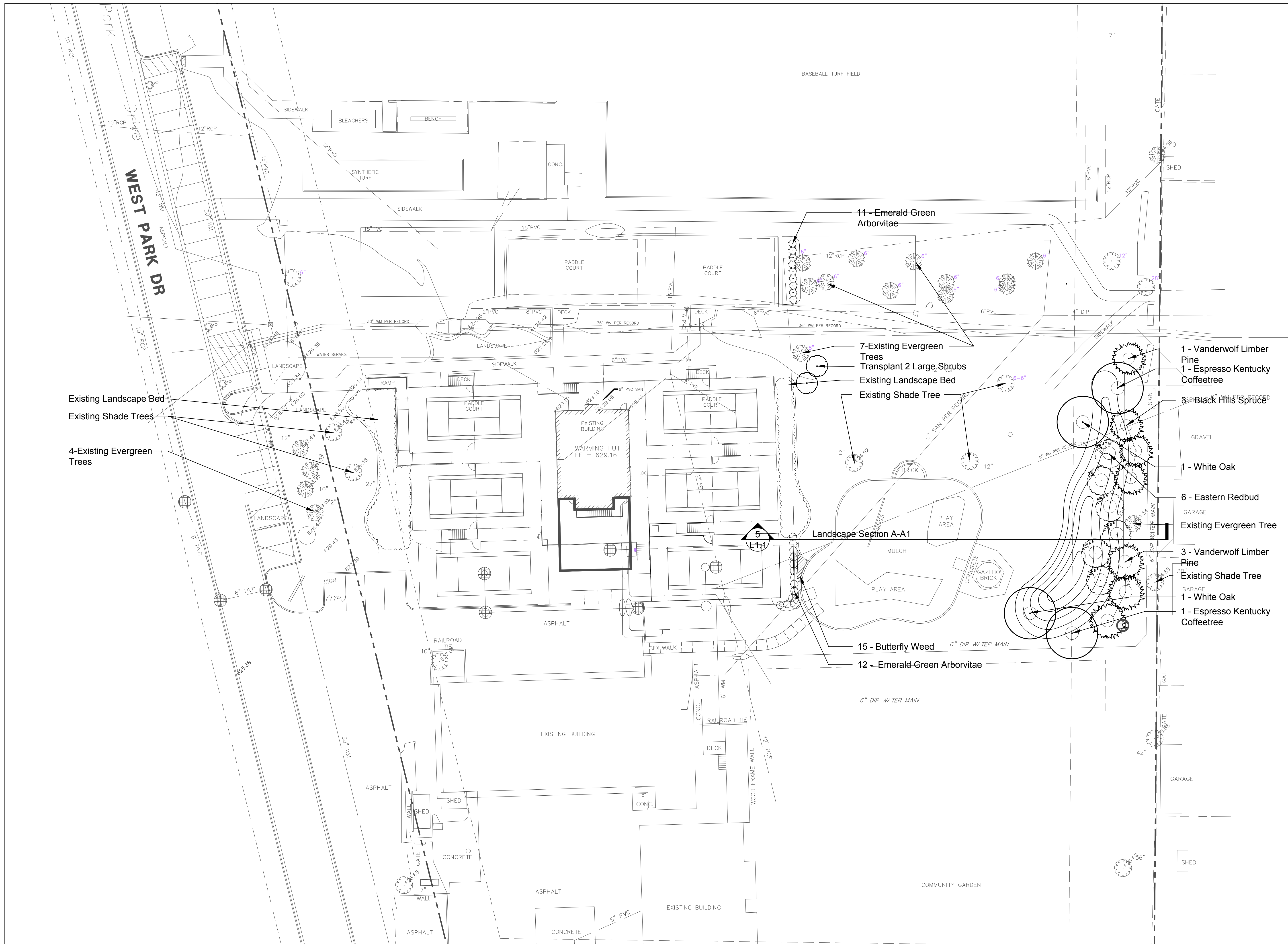
1005

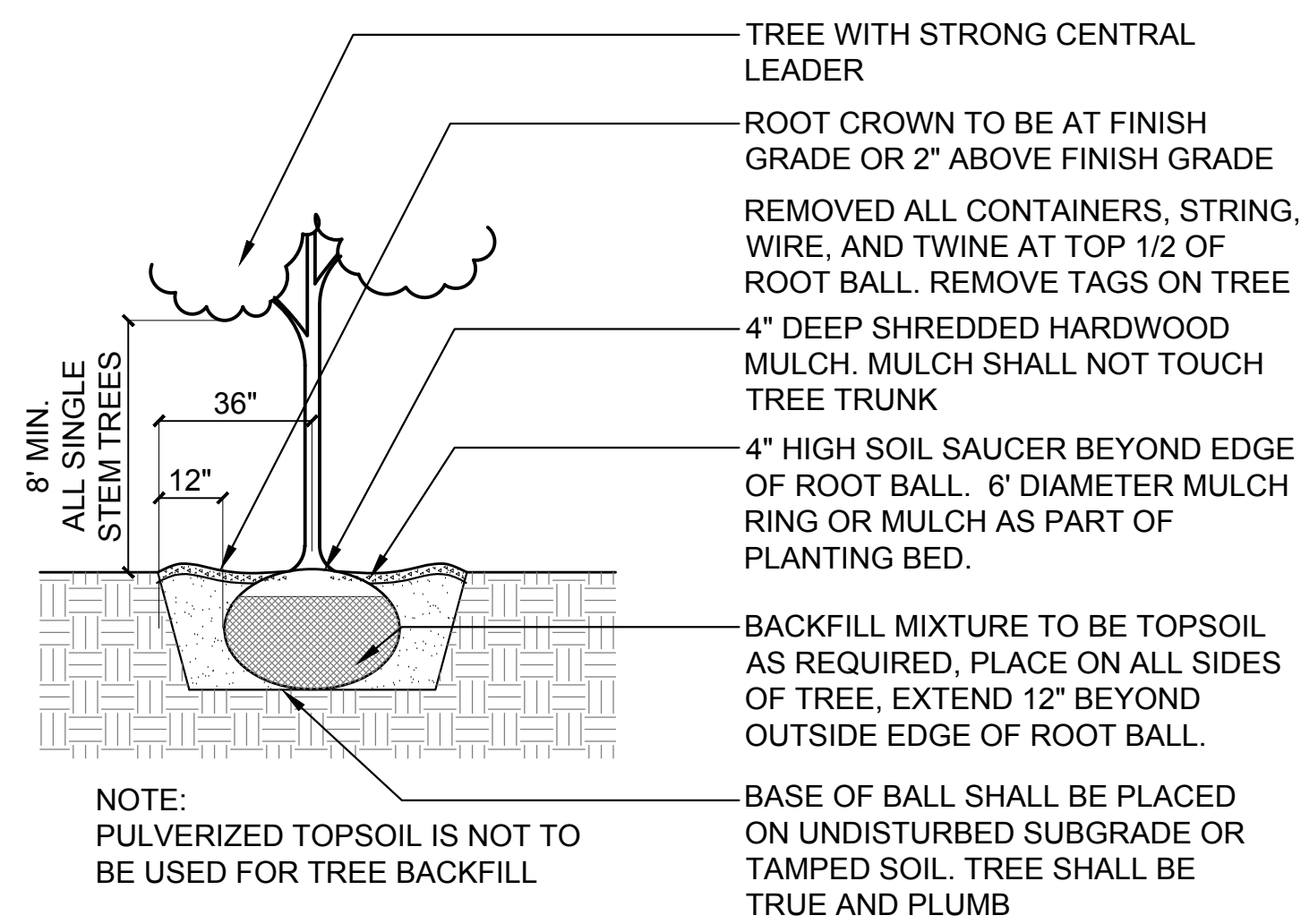
SHEET TITLE

**Landscape
 Plan**

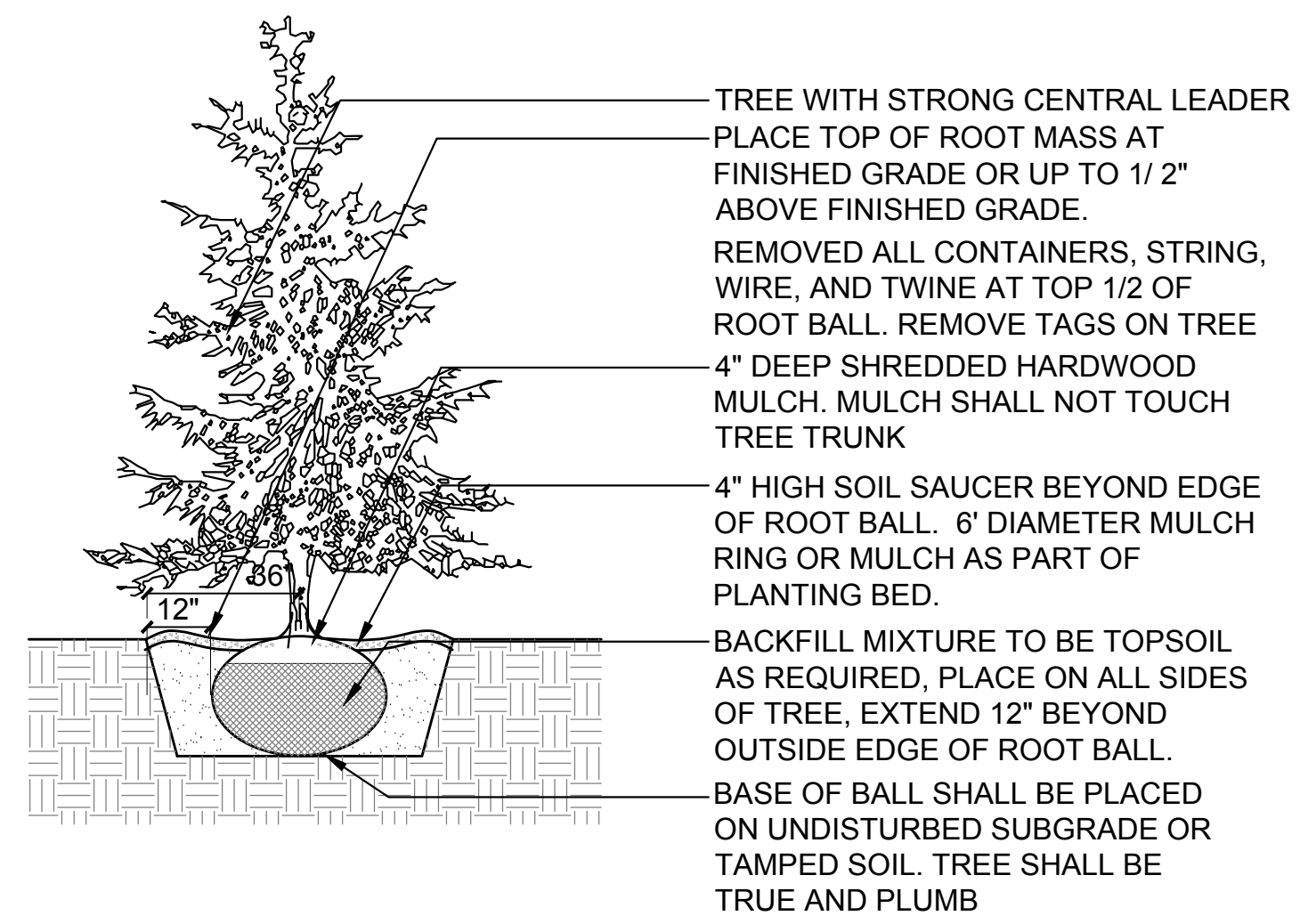
SHEET NUMBER

L1.0

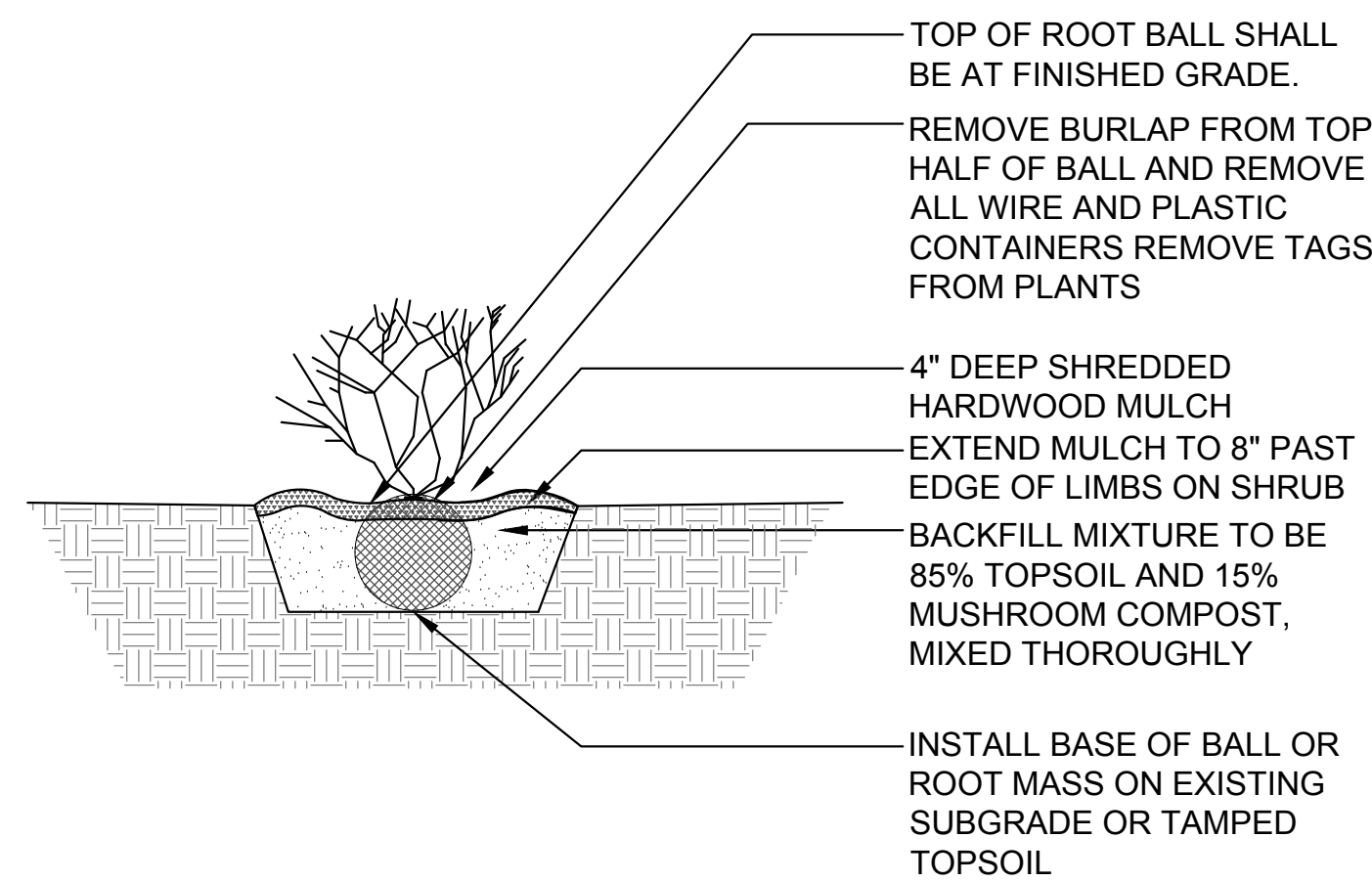




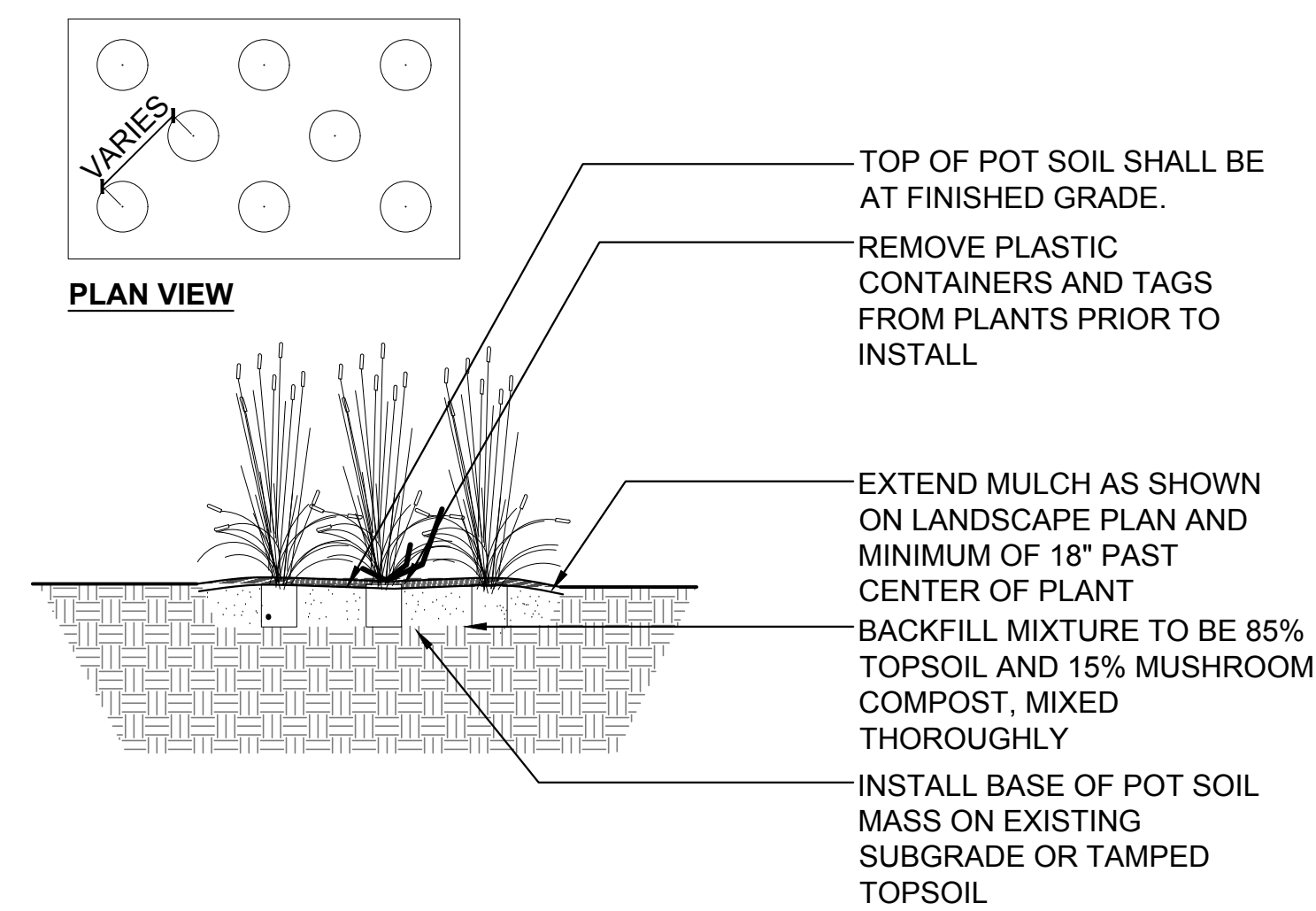
1 Tree Installation
 SCALE: N.T.S. d-plant-tree_12



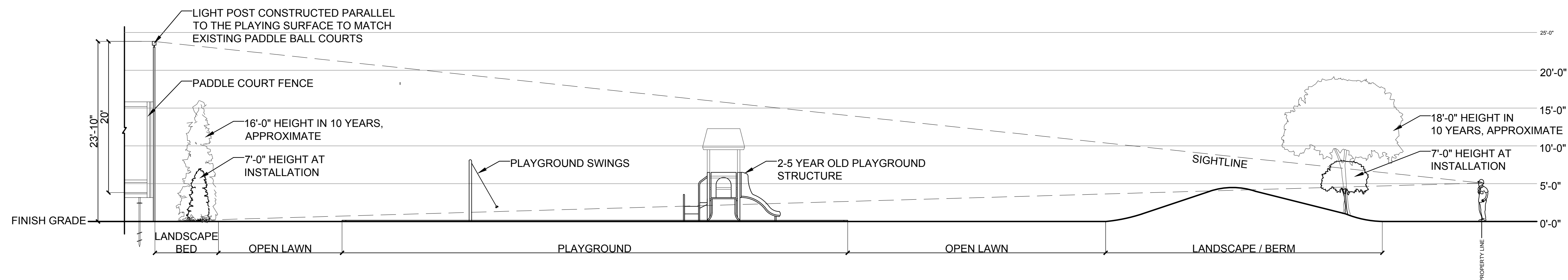
2 Evergreen Installation
 SCALE: N.T.S. d-plant-evergreen_12



3 Shrub Installation
 SCALE: N.T.S. d-plant-shrub_12



4 Perennial & Ornamental Grass Installation
 SCALE: 1" = 1'-0" d-perennials



5 Section A-A1
 SCALE: 1/8" = 1'-0" Wilmette-West Park_Paddle-Landscape Section_96

GENERAL NOTES: LANDSCAPE

- Notes indicated on grading plans shall pertain to landscape plans. Final grade of planting beds shall be as per grading plan.
- The landscape contractor shall be responsible for making themselves familiar with all underground utilities and structures.
- All existing plant material and trees shall be saved and protected unless otherwise noted. Contractor to protect new and existing trees and landscaping from damage and shall restore all areas disturbed as a result of construction.
- Plant material shall be supplied from Northern Illinois nursery stock, shall be dug the planting season it is installed, and shall conform to the American Association of Nurseryman's standards.
- Plant material shall be size and type specified. Substitution of plant material shall be on a case by case basis and approved in writing by the Owner's Representative. In no case shall plant material be smaller than indicated in the plans.
- Do not willfully proceed with plantings as designed when it is obvious that obstructions and/or grade differences exist that may not have been known during the design process. Such conditions shall be immediately brought to the attention of the Owner's Representative.
- All plant material shall be inspected and approved by the Owner's Representative prior to the installation of any and all plant material.
- Plant locations shall be flagged in field with Owner's Rep. Final location of all plant material shall be subject to approval of the Owner's Representative prior to digging any holes. The landscape contractor is responsible for providing Owner's Representative with 48 hour minimum advance notice prior to planting.
- Plants shall be watered on the day they are planted and maintained with watering until final acceptance of the project.
- Apply a pre-emergent as per manufacturer's specification prior to installing mulch.
- Beds and tree rings (6" diameter) shall have 3" of hardwood shredded mulch applied and a 4" deep spade edge at lawn. Trees that are not located in beds, shall have a tree ring.
- Landscape plant material shall be guaranteed for 12 months from final acceptance. Any plant 1/3 dead or more shall be replaced under the guarantee.
- Contractor to prepare landscape beds by roto-tilling 2" of Mushroom Compost into new beds. Do not add compost nor roto-till within drip line of existing trees.
- Lawn Seeding shall be under favorable weather conditions, and shall follow dates in specification.
- Turf mixes shall be installed and lawn established at all disturbed areas.
- Do not overseed into mulch beds and paving.
- Contractor shall restore all areas disturbed as a result of construction.

PLANT LIST

QTY	SIZE	BOTANICAL NAME	COMMON NAME
Deciduous Shade Trees - Balled and Burlap			
2	2.5" cal.	<i>Gymnocladus dioicus</i> 'Espresso'	Espresso Kentucky Coffeetree
2	2.5" cal.	<i>Quercus alba</i>	White Oak
4			
Ornamental Trees - Balled and Burlap			
6	2.5" cal.	<i>Cercis canadensis</i>	Eastern Redbud
6			
Evergreen Trees - Balled and Burlap			
3	7' Ht.	<i>Picea glauca</i> var. <i>densata</i>	Black Hills Spruce
4	7' Ht.	<i>Pinus flexilis</i> 'Vanderwolf'	Vanderwolf Limber Pine
7			
Evergreen Shrubs - Balled and Burlap or Pot			
23	7' Ht.	<i>Thuja occidentalis</i> 'Smaragd'	Emerald Green Arborvitae
23			
Perennials and Ornamental Grasses - Pot			
15	#1 Cont.	<i>Asclepias tuberosa</i>	Butterfly Weed
15			



1200 Wilmette Road
 Wilmette, Illinois 60091
 Phone: 847-256-6100

PROJECT
**West Park
 Berm and
 Landscape
 Renovations**

PROJECT TEAM

uplandDesign
uplandDesign Ltd
 Landscape Architecture & Park Planning
 1229 N. North Branch St., Chicago, Illinois 60642
 24042 Lockport St, Plainfield, Illinois 60544
 815-254-0091 www.uplandDesign.com

SURVEYOR
 Gewalt Hamilton Associates, INC.
 625 Forest Edge Drive
 Vernon Hills, Illinois 60061
 Phone: 847-478-9700

REVISIONS

MB/DW	VILLAGE REVIEW	09SEP2022

PROJECT NUMBER

1005

SHEET TITLE

**Landscape
 Plan**

SHEET NUMBER

L1.1