



## Upcoming @ Warehouse 1-10

**Music on Main - Opening at kind of a small array -  
Closing weekend for THREE New Mexico Artists**



## MUSIC on MAIN

**Warehouse 1-10 and kind of a small array are Pleased to Present  
A Two Day Curated Musical Event** featuring five extraordinary bands:  
**Wolverton, Paper Moon Shiners, Garrett T. Capps, Buttercup &  
Walter Salas-Humara.**

**Friday August 9 & Saturday Aug 10, 2019 @Warehouse 1-10**  
*An intimate setting in the Warehouse 1-10 Garden.*

The event takes place under a canopy of trees in the Warehouse 1-10 Garden at (110 North Main Street) and will include two ticketed evening performances on Friday and Saturday and a series of free 30-minute performances by local musicians on Saturday afternoon.

The musical styles of the evening performances span the genres of Americana & roots, electric folk, art rock, power pop, story-ballads and psychedelic country. Each band has a unique performance style that is guaranteed to keep a captive audience.

**Friday Evening, August 9th** [Buy Ticket](#)



[Paper Moon Shiners - Listen](#)



[Garrett T. Capps - Listen](#)

Friday night features Paper Moon Shiners who play vintage, vaudeville and blues with humor and panache and lots of audience interaction and Garrett T. Capps, whose atmospheric country music will have you dancing.

## Saturday Evening, August 10th [Buy Ticket](#)



[Wolverton - Listen](#)



[Buttercup - Listen](#)



[Walter Salas-Humara  
Listen](#)

Saturday, Wolverton's garage folk will get things started, followed by Buttercup's twist on pop and rock. Walter Salas-Humara, veteran of the mid-80s New York scene and storyteller par-excellence, will close out the evening.

## Saturday Afternoon Performance Series - Open to the public Noon To 3:30 pm

A series of 30-minute performances by local musicians on Saturday afternoon. The free performances are a celebration of sound spanning the genres of music and include an audience participatory drumming session with Socorro Drum Tribe, Classical Cello by Gaby Vocello, Modern Folk by Torie Petersen, Tammy Zibners, Jazz Sax by Tom Hunt and a special appearance by Nina Tolentino and Trio Romance.

The performances will take place in the garden and in the front Gallery of Warehouse 1-10.

Online tickets are \$15.00 per evening or \$25.00 for both nights. Food and drinks will be available for purchase onsite by the New Mexico Kiwanis Club. Food proceeds will benefit the club.

[Buy Your Ticket Now](#)

This event is part of Warehouse 1-10's **Camp Chair Event Series** so if you



have a favorite camp chair, bring it along. Some seating will be provided.  
Stay Tune for more *Camp Chair Events*. **For more information**  
**call 575 -517-0669**

## THANK YOU !

This event is made possible in part through the generous donation of Ginny Galer and Joe Stanley, Michael Bisbee and Sigrid McCabe, The Estate of Demetri Gassoumis, Carolyn Gibbons and Warehouse Creative Arts/Kroma

Thank you to our Business Sponsors: La Posada Art Gallery, Magdalena Cafe, Magdalena Hall Hotel and Gail Armstrong 49th District Representative.

Thank you to all the talented performers.

---

## Exhibitions



**kind of a small array** is  
please to present,  
*Mystic Garden* by Wolverton  
keys player, **Kate Terrell**  
Thursday August 8, Opening  
reception 6-8pm  
106 N. Main Street, Magdalena

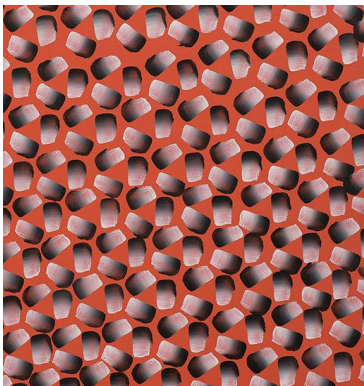
---

@ Warehouse 1-10

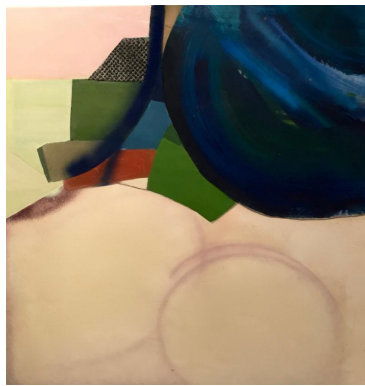
**THREE...**

***Solo exhibitions by New Mexico Artists***

Closing weekend August 9 & 10 Gallery will be open through Music on Main  
All artists will be in attendance.



**JAMES HART**



**PHILLIS IDEAL**



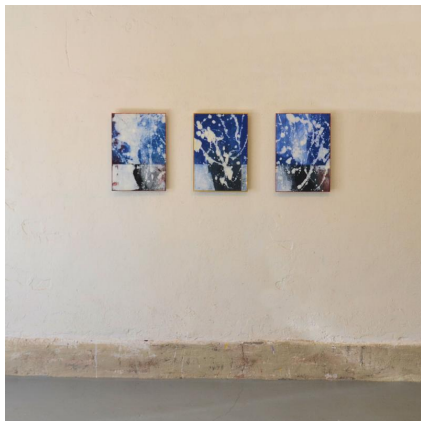
**LARRY BOB**

**110 North Main Street, Magdalena NM**

**11-4 or by appt. 575-854-3253**

View the artists: [www.warehouse110.com](http://www.warehouse110.com)

**Hotels-Airbnb listed on our website**



**Michael K. Bisbee**

New Paintings from the  
*Trouble at Sea Series*

**Warehouse 1-10 ANNEX**

Pop-up Exhibition

210 South Main Street, Magdalena NM

Friday, Saturday & Sunday

August 9,10,11

by Appt. 575-517-0669

View our website:

[www.warehouse110.com](http://www.warehouse110.com)

---

## In Community

New B & B at the West Edge of Town!

### **La Posada de Maria Magdalena**

[Text Link](#)



**La Posada de Maria Magdalena** is a new B&B at the west edge of town. Aside from its beautiful traditional southwest construction and stunning panoramic views its first notable feature is the two delightful proprietors John Sakel and Fritz Kapraun.

John a landscape photographer and Fritz a watercolorist moved to Magdalena from North Carolina to create the B&B of their dreams.

The two newly constructed spacious guest casitas are private yet conveniently located near the main house where you're welcome to enjoy the courtyard or relax by the kiva fireplace and enjoy a hearty breakfast. Additionally, based on their extensive involvement in La Romita International Art Program (Umbria, Italy) they now offer a 3 – 5 day immersive watercolor workshop in their new idyllic setting. You can book your stay directly through their website [laposadademariamagdalena.com](http://laposadademariamagdalena.com) or through Airbnb.



warehouse 1-10 and kind of a small array present:

# 2019 MUSIC ON MAIN

MAGDALENA, NEW MEXICO



**\$15 FOR ONE NIGHT \$25 FOR BOTH NIGHTS**

**FRIDAY, AUGUST 9TH 7PM-9PM & SATURDAY AUG 10TH, 6PM- 9PM**

**Warehouse 1-10 Garden. 110 North Main Street, Magdalena NM**

**For tickets go to [www.warehouse110.com](http://www.warehouse110.com) For more info call 575-517-0669**

**[Get your ticket here!](#)**

---

Download This Email

---